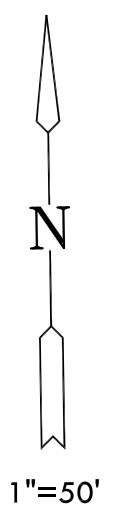
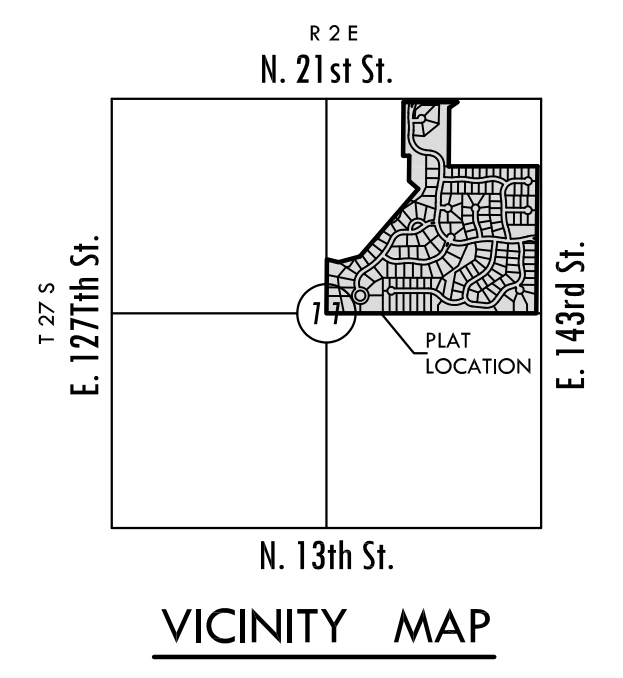


PLOTTED: Thursday, July 11, 2013 10:08 AM

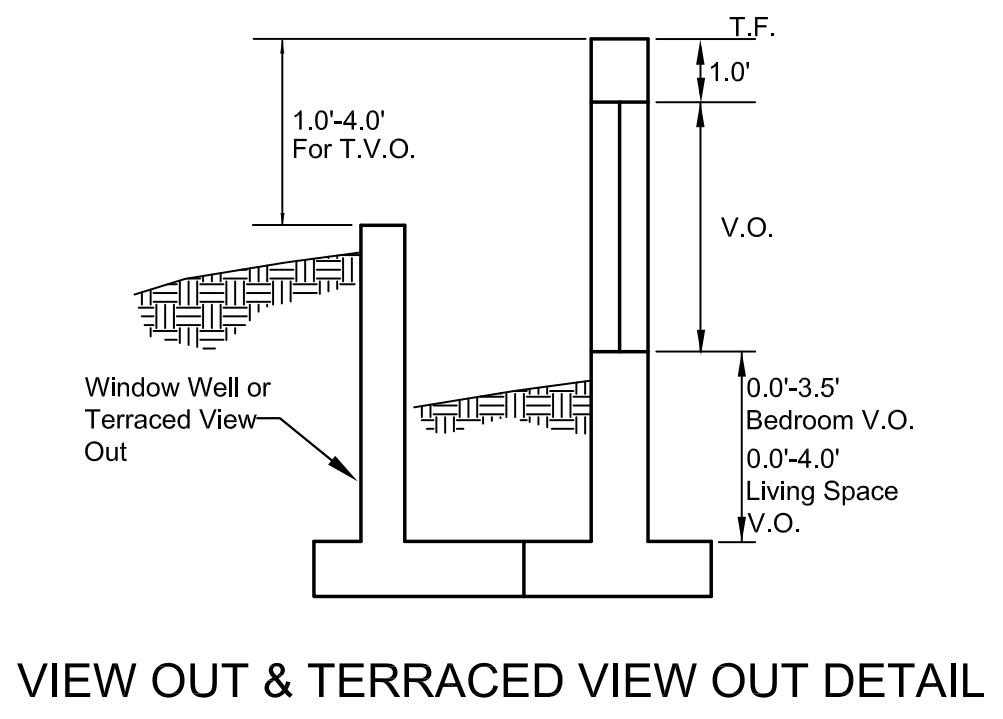


Basis of Bearings: Kansas coordinate system 1983  
south zone bearing of N88°37'33"E along the N.  
Line of NE. 1/4, Sec. 11 T27S, R2E, 6th P.M.

**BENCH MARKS**

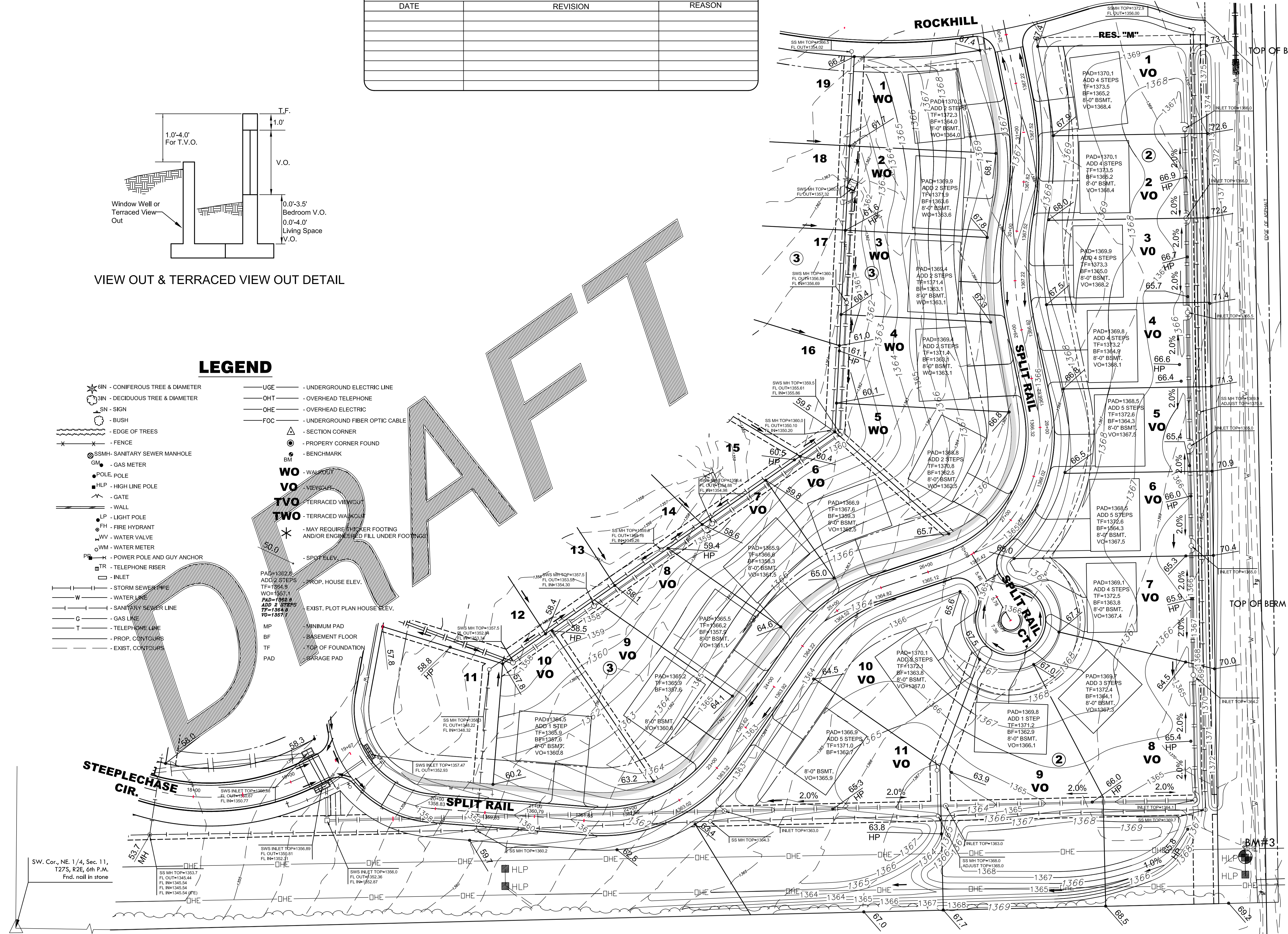
- Datum BM: at NE corner of inlet on S. side of Williamsgate over bridge in Hawthorne Addition. Elev. = 1355.74 (NGVD 29)
- BM#1: RR spike in S. face of PP, 3rd PP W. of 143rd St. (79' from CL) S. side of 21st St. (49' from CL) Elev. = 1362.17 (NGVD 29)
- BM#2: FH NE bolt w/ tag on top of flange, W. side of 143rd St. NW of drive. (23' from CL) Elev. = 1362.81 (NGVD 29)

REVISION HISTORY		
DATE	REVISION	REASON



**LEGEND**

- BIN - CONIFEROUS TREE & DIAMETER
- DECIDUOUS TREE & DIAMETER
- SIGN
- BUSH
- EDGE OF TREES
- FENCE
- SSMH - SANITARY SEWER MANHOLE
- GM - GAS METER
- POLE, POLE
- HLP - HIGH LINE POLE
- GATE
- LP - LIGHT POLE
- FH - FIRE HYDRANT
- WV - WATER VALVE
- WM - WATER METER
- PP - POWER POLE AND GUY ANCHOR
- TR - TELEPHONE RISER
- INLET
- STORM SEWER PIPE
- W - WATER LINE
- SANITARY SEWER LINE
- G - GAS LINE
- TELEPHONE LINE
- PROP. CONTOURS
- EXIST. CONTOURS
- UGE - UNDERGROUND ELECTRIC LINE
- OHT - OVERHEAD TELEPHONE
- OHE - OVERHEAD ELECTRIC
- FOC - UNDERGROUND FIBER OPTIC CABLE
- SECTION CORNER
- PROPERTY CORNER FOUND
- BENCHMARK
- WALKWAY
- TERRACED VIEW OUT
- TERRACED WALKWAY
- SPOT ELEV.
- PROP. HOUSE ELEV.
- EXIST. PLOT PLAN HOUSE ELEV.
- MP - MINIMUM PAD
- BF - BASEMENT FLOOR
- TF - TOP OF FOUNDATION
- GARAGE PAD



LOT GRADING PLAN FOR  
**KRUG SOUTH ADDITION**  
PHASE 5

©2013 MKEC Engineering All Rights Reserved  
www.mkec.com  
These drawings and their contents, including, but not limited to, all concepts, designs, & ideas are the exclusive property of MKEC Engineering (MKEC), and may not be used or reproduced in any way without the express consent of MKEC.

**LOT GRADING**

PROJECT NO.	05291
DATE	JULY 2013
SCALE	AS SHOWN
DESIGNED	KLA
DRAWN	DM
CHECKED	GJA
#	
NO.	REVISION
DATE	

SHEET NO.  
16 OF 17

J:\CIVIL\05291\DWG\CIVIL\3D5-CIVIL\CAD\GRID\05291\_LGP\_P5.DWG