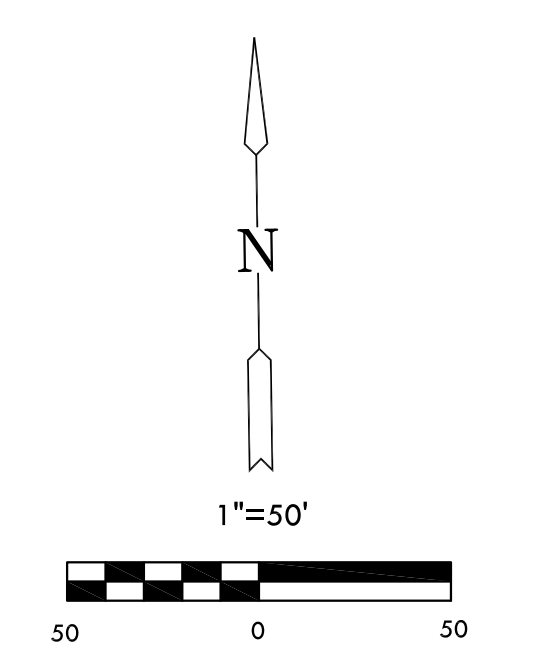
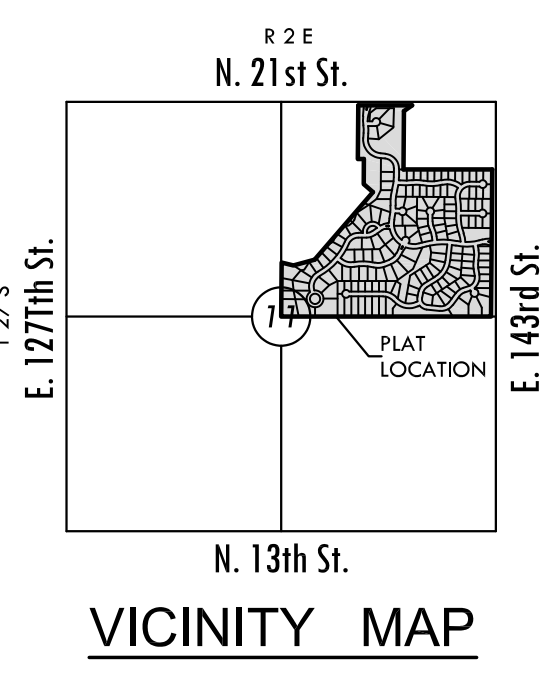


©2013 MKEC Engineering
All Rights Reserved
www.mkec.com
These drawings and their contents, including, but not limited to, all concepts, designs, & ideas are the exclusive property of MKEC Engineering (MKEC), and may not be used or reproduced in any way without the express consent of MKEC.

GRADING PLAN

PROJECT NO.	472-85059		
DATE	AUGUST 2013		
SCALE	AS SHOWN		
DESIGNED	DRAWN	CHECKED	
KLA	DM	GJA	
#		REVISION	DATE
NO.			

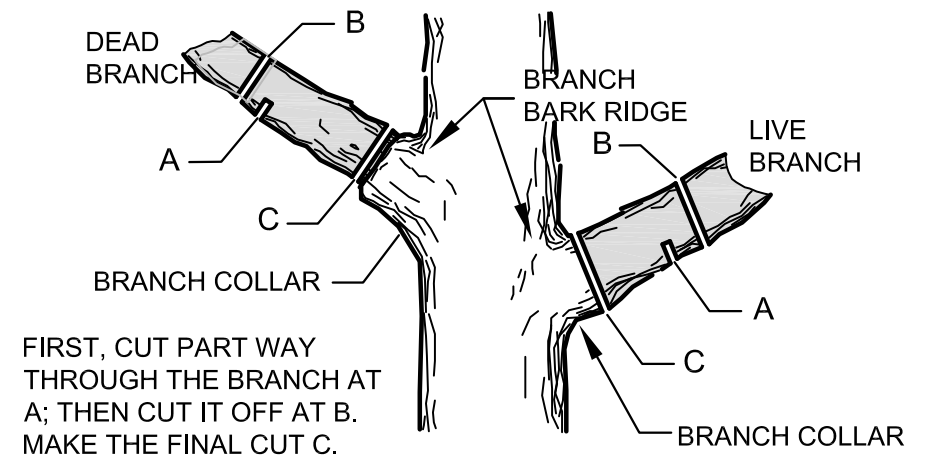
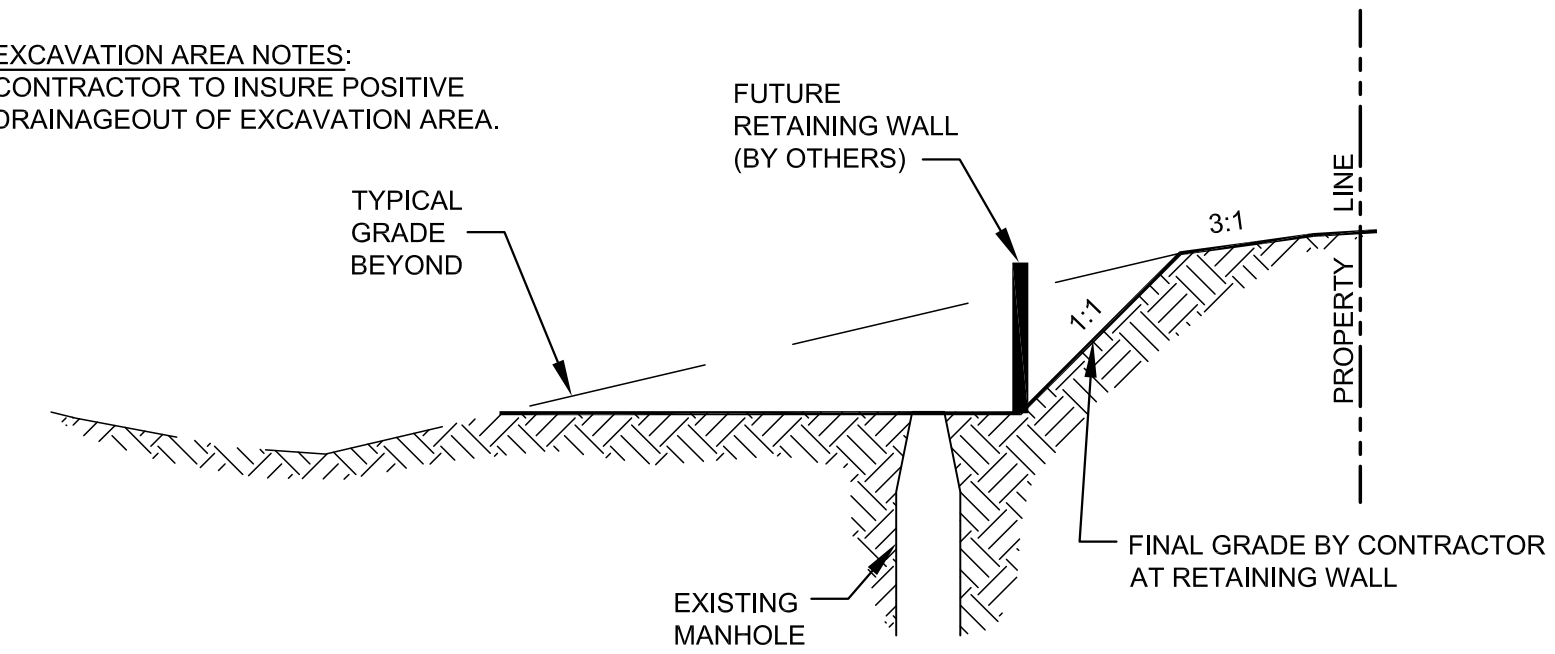


Basis of Bearings: Kansas coordinate system 1983
south zone bearing of N88°37'33"E along the N.
Line of NE. 1/4, Sec. 11 T27S, R2E, 6th P.M.

NOTES

- PROPOSED CONTOURS SHOWN REPRESENT TOP OF SUB-GRADE WITHIN R.O.W.
- EXISTING GRAD LINE SHOWN IN CROSS SECTION SHEETS ASSUMES THE MASS GRADING HAS BEEN COMPLETED PER THIS SHEET.

EXCAVATION AREA NOTES:
CONTRACTOR TO INSURE POSITIVE DRAINAGE OUT OF EXCAVATION AREA.

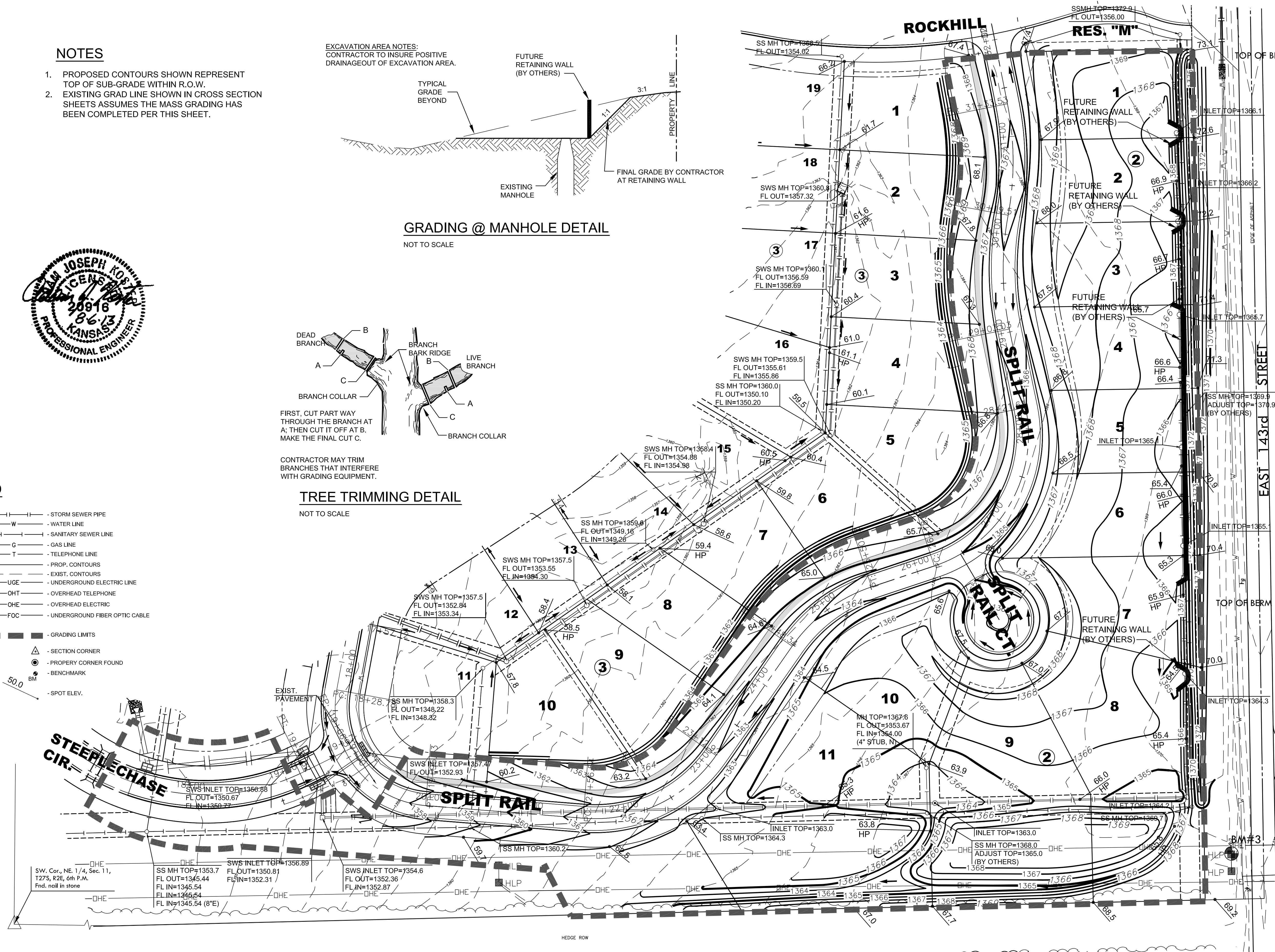


LEGEND

- 6IN - CONIFEROUS TREE & DIAMETER
- 3IN - DECIDUOUS TREE & DIAMETER
- SN - SIGN
- BUSH
- EDGE OF TREES
- FENCE
- SSMH - SANITARY SEWER MANHOLE
- GM - GAS METER
- POLE POLE
- HLP - HIGH LINE POLE
- GATE
- WALL
- LP - LIGHT POLE
- FH - FIRE HYDRANT
- WV - WATER VALVE
- WM - WATER METER
- PP - POWER POLE AND GUY ANCHOR
- TR - TELEPHONE RISER
- INLET
- STORM SEWER PIPE
- WATER LINE
- SANITARY SEWER LINE
- GAS LINE
- TELEPHONE LINE
- PROP. CONTOURS
- EXIST. CONTOURS
- UGE - UNDERGROUND ELECTRIC LINE
- OHT - OVERHEAD TELEPHONE
- OHE - OVERHEAD ELECTRIC
- FOC - UNDERGROUND FIBER OPTIC CABLE
- GRADING LIMITS
- SECTION CORNER
- PROPERTY CORNER FOUND
- BENCHMARK
- SPOT ELEV.

BENCH MARKS

- Datum BM: □ at NE corner of inlet on S. side of Williamsgate over bridge in Hawthorne Addition. Elev. = 1355.74 (NGVD 29)
- BM#1: RR spike in S. face of PP, 3rd PP W. of 143rd St. (79' from CL) S. side of 21st St. (49' from CL). Elev. = 1362.17 (NGVD 29)
- BM#2: FH NE bolt w/ tag on top of flange, W. side of 143rd St. NW of drive. (23' from CL). Elev. = 1382.81 (NGVD 29)



J:\CIVIL\05291\DWG\CIVIL\3D\5-CIVIL\CAD\GRD\05291_GRD_P6.DWG