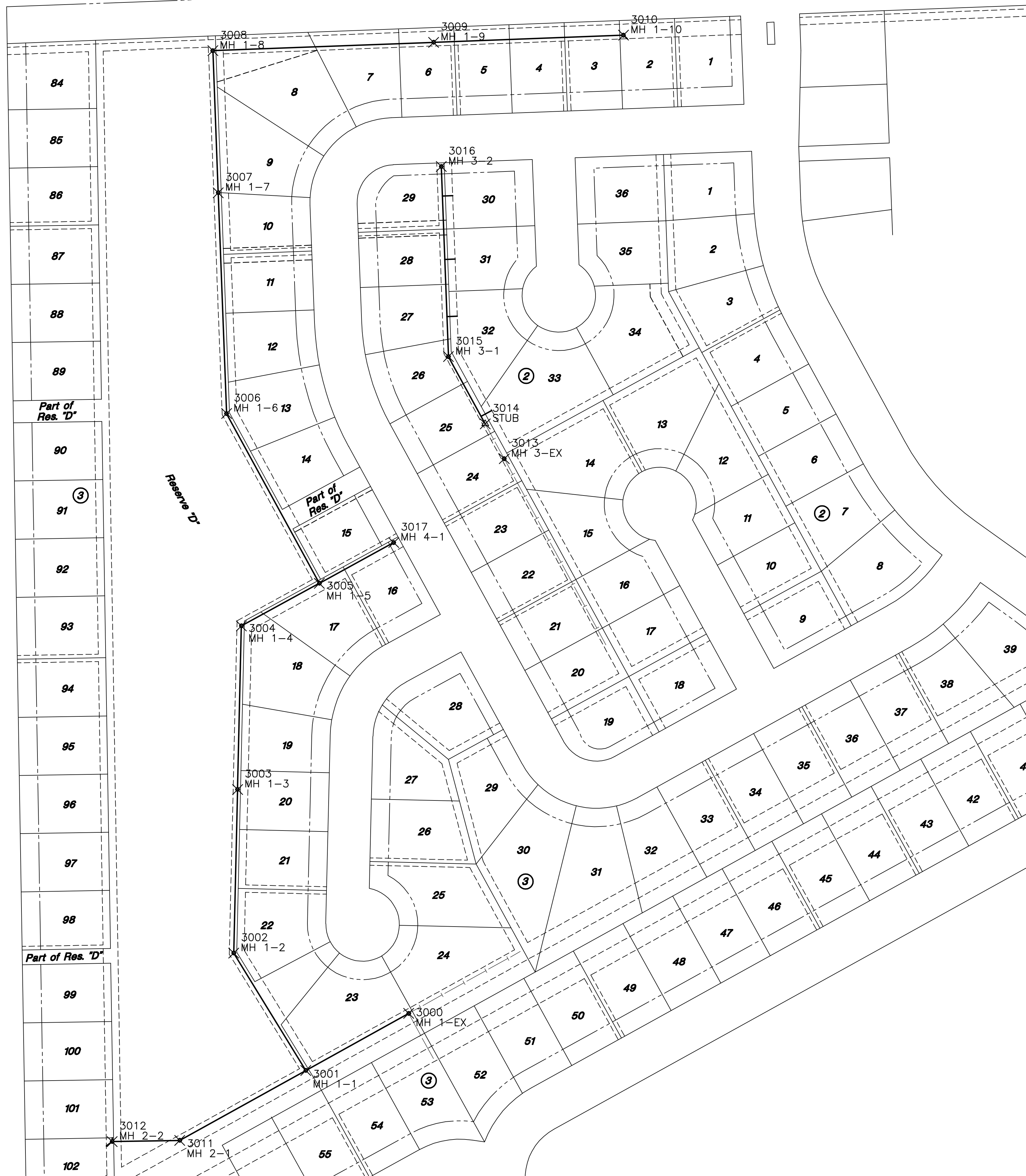


PLOTTED: Saturday, August 03, 2013 @ 1:02PM

J:\PROJECTS\2013\1301010385_COW BAY COUNTRY DEVELOPMENT-CIVIL\CAD\SAN\1385 SS BUBBLE MAP.DWG



SANITARY SEWER POINTS			
Point #	Northing	Easting	Desc.
3000	1686573.67	1605409.57	MH 1-EX
3001	1686496.16	1605269.81	MH 1-1
3002	1686655.59	1605171.95	MH 1-2
3003	1686877.74	1605177.13	MH 1-3
3004	1687099.90	1605182.30	MH 1-4
3005	1687157.79	1605288.20	MH 1-5
3006	1687388.28	1605162.19	MH 1-6
3007	1687688.07	1605150.89	MH 1-7
3008	1687881.10	1605143.61	MH 1-8
3009	1687892.40	1605443.40	MH 1-9
3010	1687902.12	1605701.21	MH 1-10
3011	1686401.23	1605098.66	MH 2-1
3012	1686399.73	1605006.92	MH 2-2
3013	1687326.88	1605539.32	MH 3-EX
3014	1687374.26	1605513.41	STUB
3015	1687465.59	1605463.48	MH 3-1
3016	1687723.67	1605453.75	MH 3-2
3017	1687213.01	1605389.20	MH 4-1



SANITARY SEWER PLANS FOR
BAY COUNTRY ADDITION
 PHASE 1

©2013 MKEC Engineering All Rights Reserved www.mkec.com
 These drawings and their contents, including, but not limited to, all concepts, designs, & ideas are the exclusive property of MKEC Engineering (MKEC), and may not be used or reproduced in any way without the express consent of MKEC.

BUBBLE MAP			
PROJECT NO.	468-84890		
DATE	AUGUST 2013		
SCALE	1"=80'		
DESIGNED	DRAWN	CHECKED	
SPE	BKS	GJA	
#	NO.	REVISION	DATE
SHEET NO.			
8 OF 15			