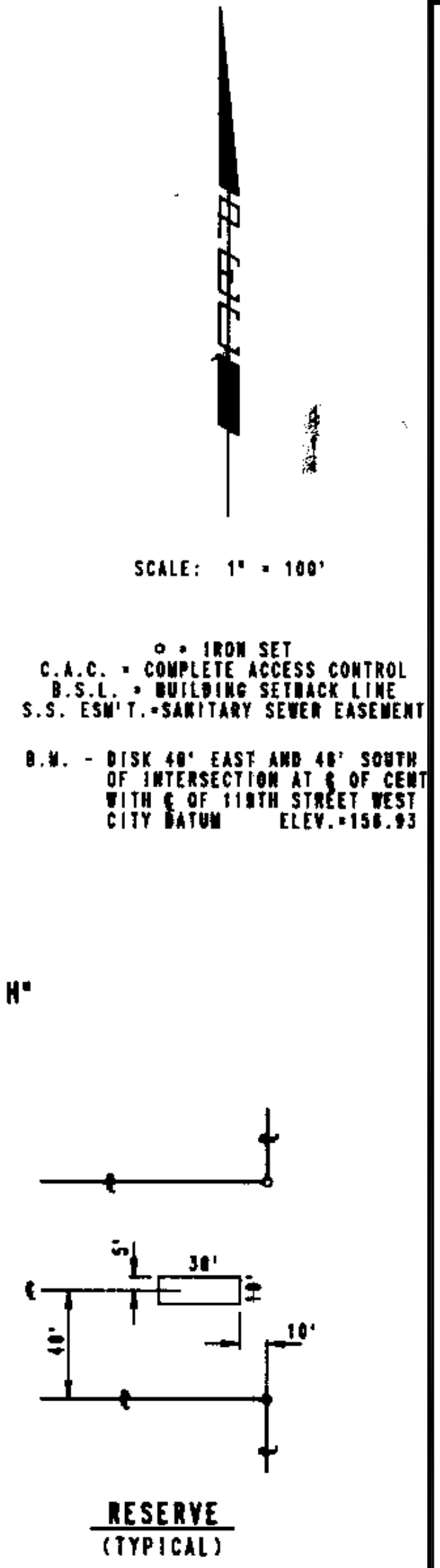
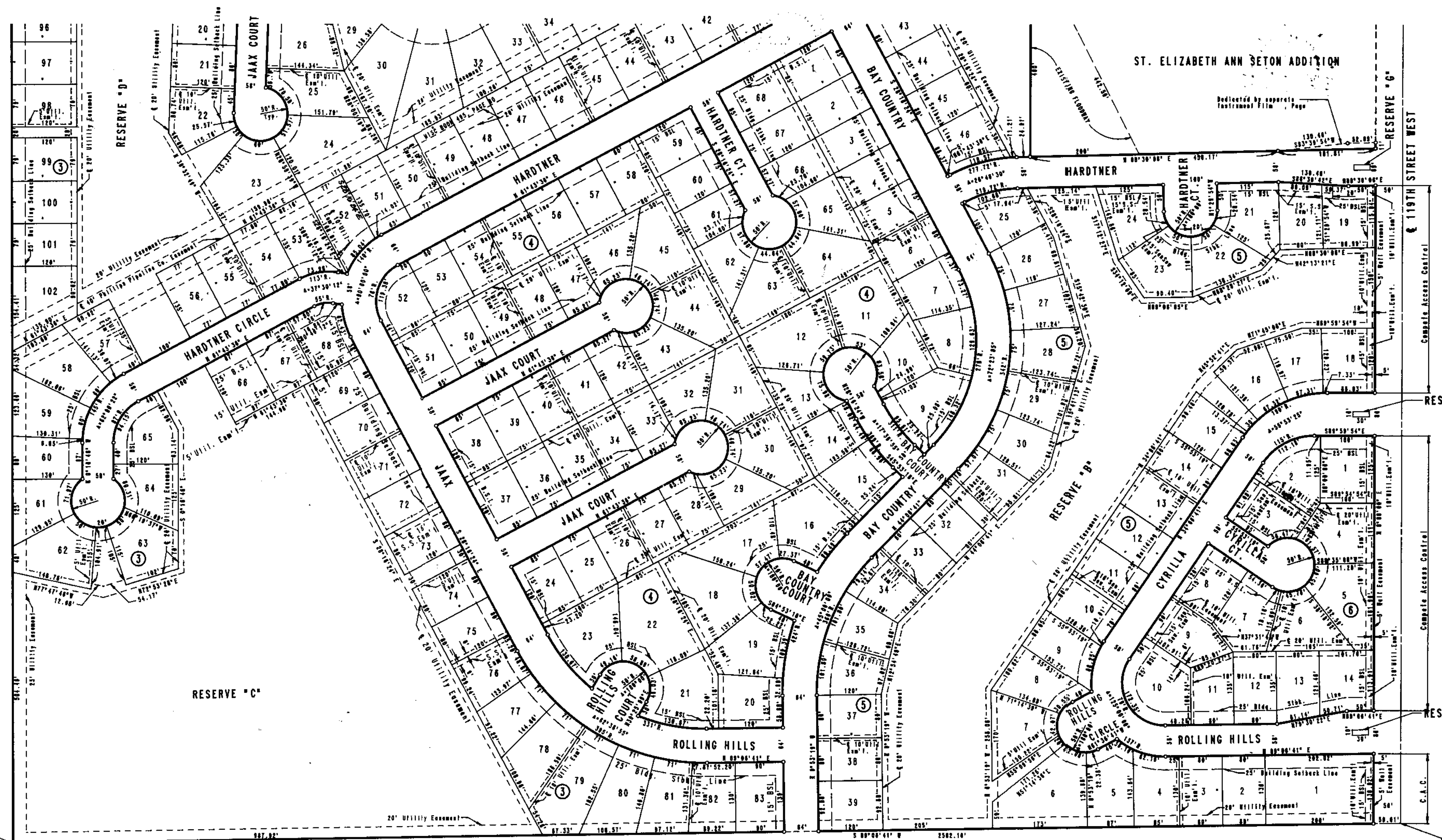


BAY COUNTRY

AN ADDITION TO WICHITA, SEDGWICK COUNTY, KANSAS

PLOTTED: Saturday, August 03, 2013 @ 12:30PM
 J:\PROJECTS\2013\1301010386_COW BAY COUNTRY DEVELOPMENTS-CIVIL\CAD\WTR\1386_P1AT2.DWG



S.W. Cor. N.E. 1/4
Sec. 24, T27S, R2W
of the 6th P.M.

SANITARY SEWER PLANS FOR

BAY COUNTRY ADDITION

PHASE 1

FINAL PLAT 2

PROJECT NO.	448-90598	
DATE	AUGUST 2013	
SCALE	1"=40'	
DESIGNED	DRAWN	CHECKED
SLF	SLF	ABC
#	REVISION	DATE
NO.		

SHEET NO.
15 OF 15