

# SITE LIGHTING PLANS FOR WATERFRONT SIXTH ADDITION

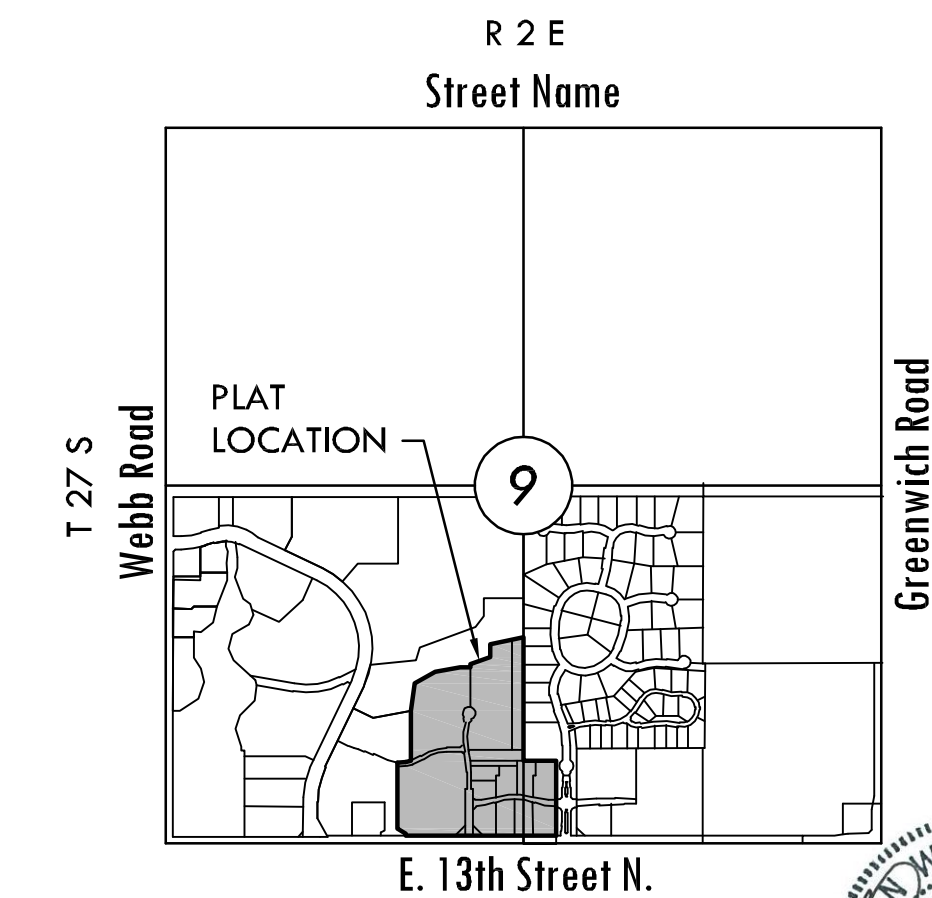
AN ADDITION TO THE CITY OF WICHITA  
SEDGWICK COUNTY, KANSAS

PROJECT NO. 472-84626

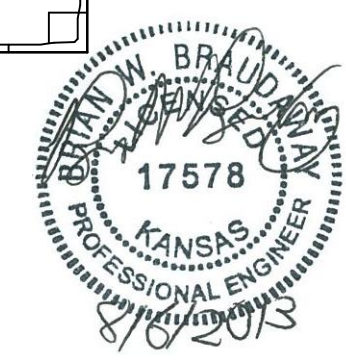
GARY L. JANZEN, P.E. - CITY ENGINEER

OCA 766292

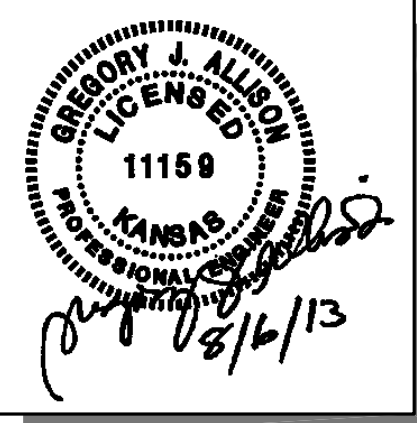
LINDBERG: LOT 1 THROUGH 4, BLOCK 1



**VICINITY MAP**  
No Scale



**MKEC**  
ENGINEERING  
CONSULTANTS, INC.  
411 NORTH WEBB ROAD  
WICHITA, KS 67206  
PHONE: 316.684.9600  
FAX: 316.616.0841  
WWW.MKEC.COM

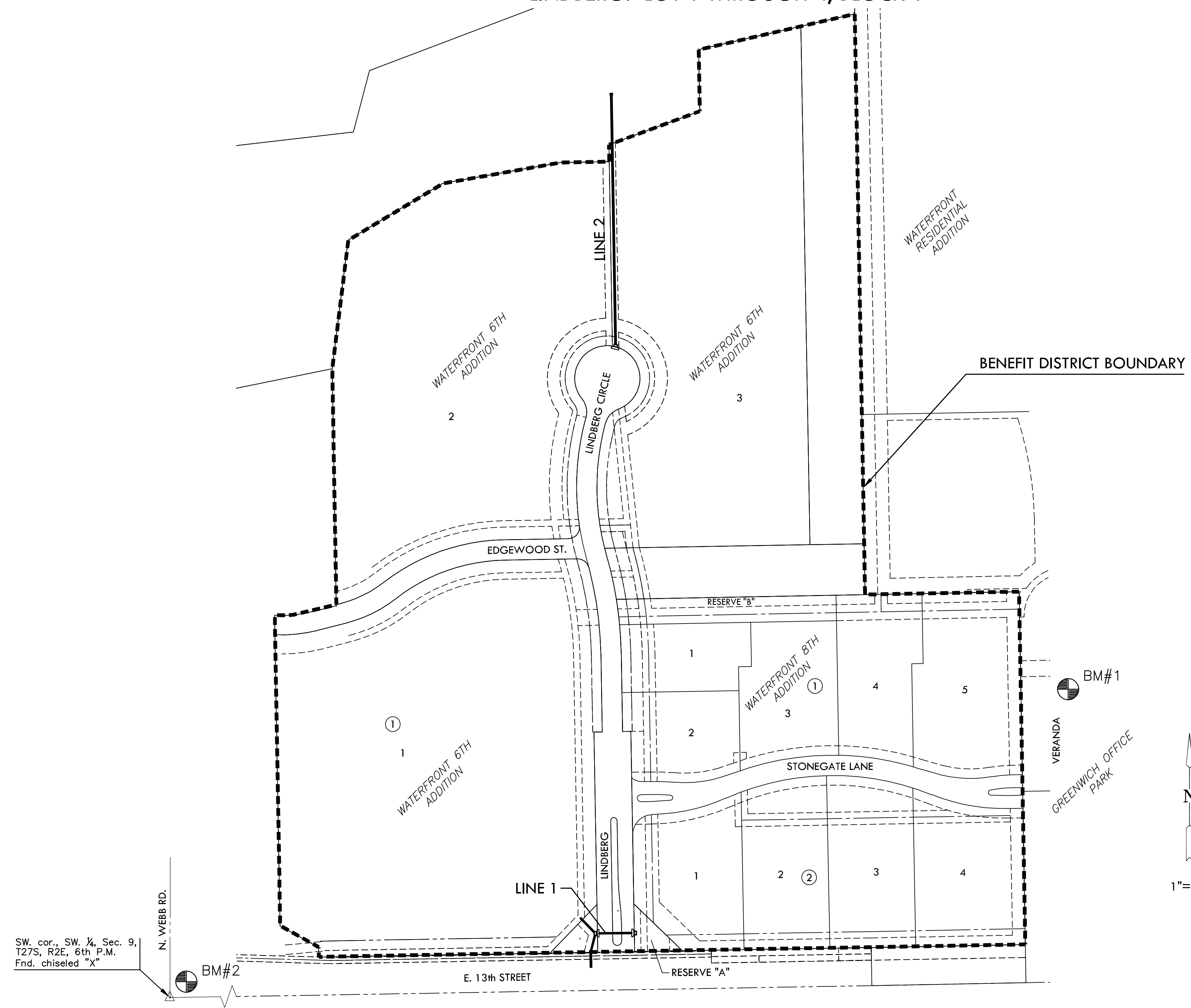


### INDEX TO DRAWINGS

SHEET NO.	DESCRIPTION
1	TITLE SHEET
2	ELECTRICAL GENERAL NOTES
3	ELECTRICAL SITE LIGHTING PLAN
4	ELECTRICAL SCHEDULES AND SPECIFICATIONS
5	ELECTRICAL DETAILS
6	BUBBLE MAP
7-11	BMP SHEETS
12	FINAL PLAT

### BENCHMARKS

- BM#1 CHISELED SQUARE NORTH CURB OF ISLAND ON VERANDA, 460' NORTH OF 13TH STREET NORTH. ELEV.=1387.03 NAVD 88
- BM#2 SQUARE CUT ON SW. CORNER OF SIGNAL LIGHT POLE BASE AT NE. CORNER OF WEBB RD. AND 13TH ST. ELEV.=1373.345 (NGVD 29)



SW. cor., SW. 1/4 Sec. 9,  
T27S, R2E, 6th P.M.  
Fnd. chiseled "X"

**ELECTRICAL SITE LIGHTING PLANS FOR  
WATERFRONT SIXTH ADDITION  
PART B**

### TITLE SHEET

SHEET TITLE  
**472-84626**  
PROJECT NUMBER

DFL / JWC /  
DESIGNED / DRAWN / CHECKED

ISSUED  
**August 2013**  
REVISED

SHEET NO.  
**1 of 12**