

**ELECTRICAL SITE LIGHTING PLANS FOR  
WATERFRONT SIXTH ADDITION  
PART B**

**ELECTRICAL  
SITE PLAN**  
SHEET TITLE  
**472-84626**  
PROJECT NUMBER

**CNG / JSR / BWB**  
DESIGNED DRAWN CHECKED

ISSUED  
**August 2013**

REVISED

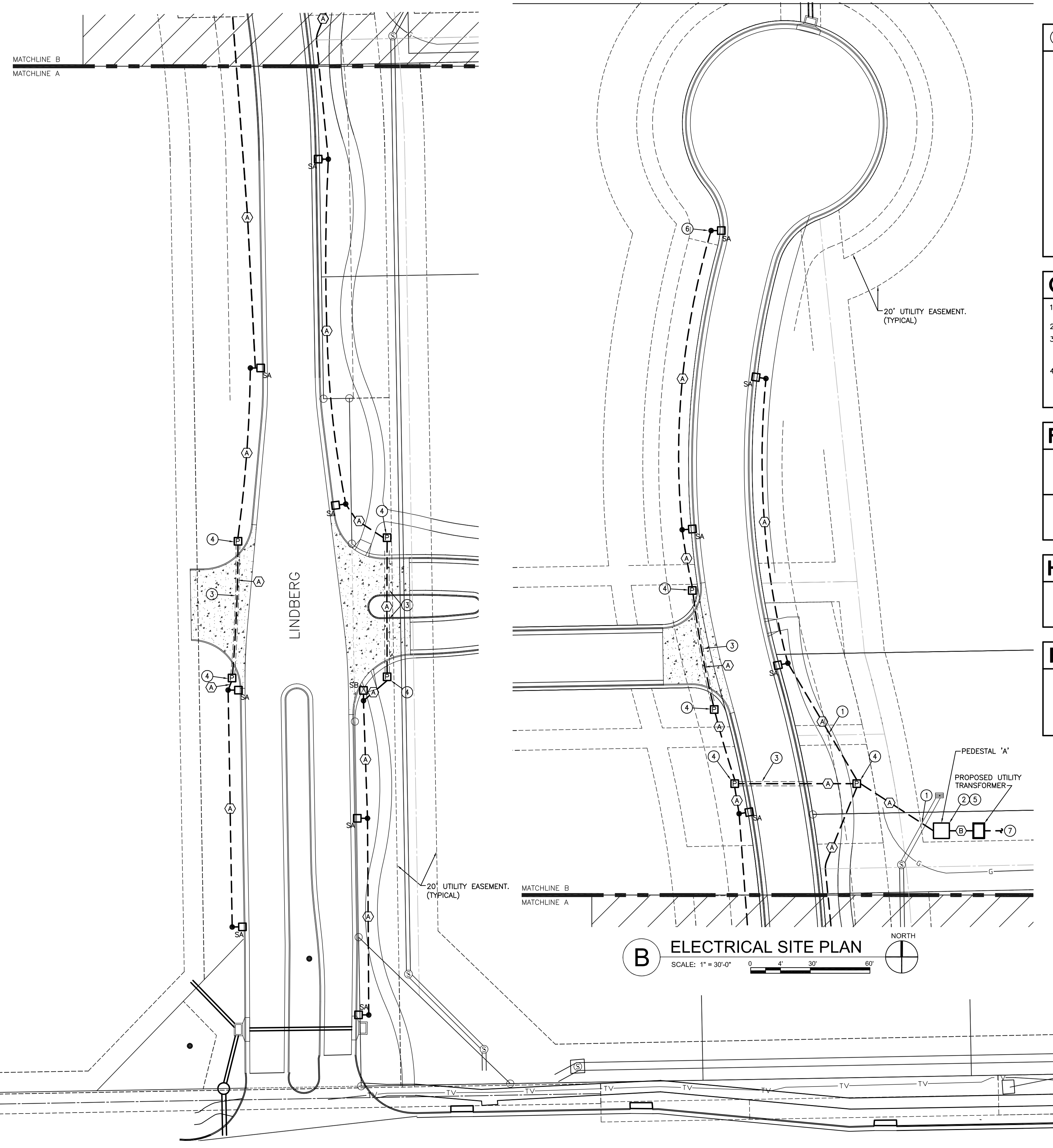
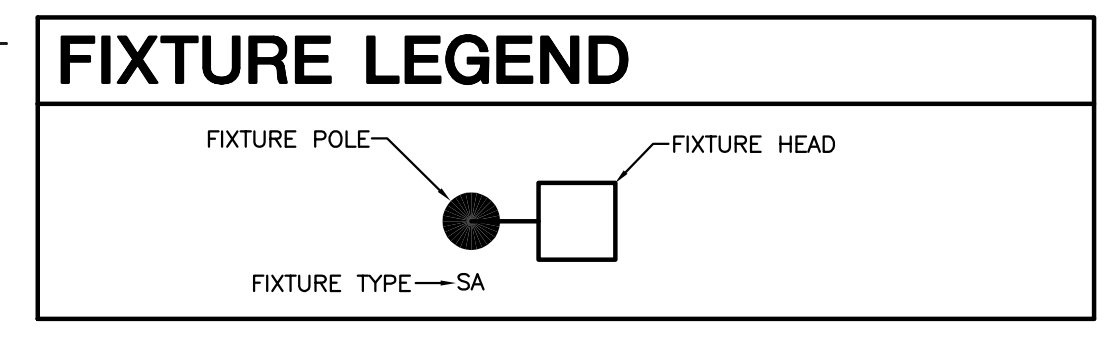
SHEET NO.  
**3 of 12**

- KEYED NOTES**
1. VERIFY DEPTH OF UTILITY PIPING WHEN ROUTING CONDUIT. TYPICAL ALL LOCATIONS WHETHER INDICATED ON PLANS OR NOT.
  2. PROVIDE AND INSTALL ELECTRICAL PEDESTAL 'A' PER DETAILS 4-7/5. CONTRACTOR SHALL VERIFY LOCATION WITH PROJECT ENGINEER PRIOR TO ROUGH-IN.
  3. EXISTING 6" PVC SLEEVE. ROUTE CONDUIT INDICATED IN FEEDER SCHEDULE THROUGH 6" SLEEVE.
  4. SEE PULL-BOX DETAIL 2/5 FOR PULL-BOX SIZE AND INSTALLATION REQUIREMENTS.
  5. PEDESTAL LOCATION TO BE DETERMINED IN THE FIELD WITH ENGINEER.
  6. SEE POLE BASE DETAIL 1/5 FOR CONSTRUCTION AND INSTALLATION REQUIREMENTS. TYPICAL OF ALL LIGHT FIXTURE POLES.
  7. SERVICE ENTRANCE FEEDER TRENCH AND CONDUIT FROM PEDESTAL TO UTILITY TRANSFORMER SHALL BE PROVIDED BY E.C. PRIMARY SERVICE LATERAL TRENCH AND CONDUIT FROM UTILITY TRANSFORMER TO MEDIUM VOLTAGE JUNCTION BOX SHALL BE PROVIDED BY E.C. COORDINATE LOCATIONS AND MEET ALL WESTAR REQUIREMENTS PERTAINING TO THE MEDIUM VOLTAGE JUNCTION BOX AND UTILITY TRANSFORMER. THIS WORK IS INCLUDED IN THE BID.

- GENERAL NOTES**
1. UPON COMPLETION OF PROJECT, E.C. SHALL PROVIDE A FULL TYPED PANEL DIRECTORY FOR EACH PANELBOARD.
  2. REFER TO CIVIL PLANS FOR PROJECT PHASING INFORMATION.
  3. FEEDER ROUTING INDICATED ON THE DRAWINGS DOES NOT ALWAYS INDICATE NATIONAL ELECTRIC CODE REQUIRED PULL BOXES. E.C. SHALL BE RESPONSIBLE FOR LOCATING AND INSTALLING REQUIRED PULL BOXES FOR EACH FEEDER.
  4. E.C. SHALL COORDINATE WITH CIVIL ENGINEER AND G.C. FOR ANY TRENCHING REQUIRED FOR CONDUIT AND COORDINATION WITH OTHER UTILITIES. GAS LINES ARE TYPICALLY ROUTED ADJACENT TO POWER CONDUITS. MAINTAIN 12" MINIMUM DISTANCE AT ALL LOCATIONS.

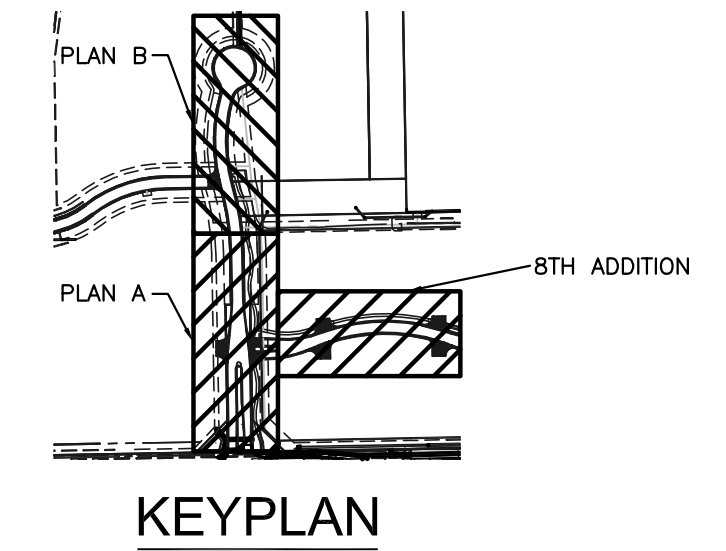
**FEEDER SCHEDULE**

(A)	(2)-#12 & (1)-#12 GND. IN 1" C. - A1:1,3
(B)	(4)-#1 IN 1" C.



**B ELECTRICAL SITE PLAN**  
SCALE: 1" = 30'-0"  
0 4' 30' 60'

**A ELECTRICAL SITE PLAN**  
SCALE: 1" = 30'-0"  
0 4' 30' 60'



PLOTED: Thursday, August 01, 2013 10:02:48AM

H:\CIVIL\02014\8TH ADD\ELEC\E2.0.DWG