

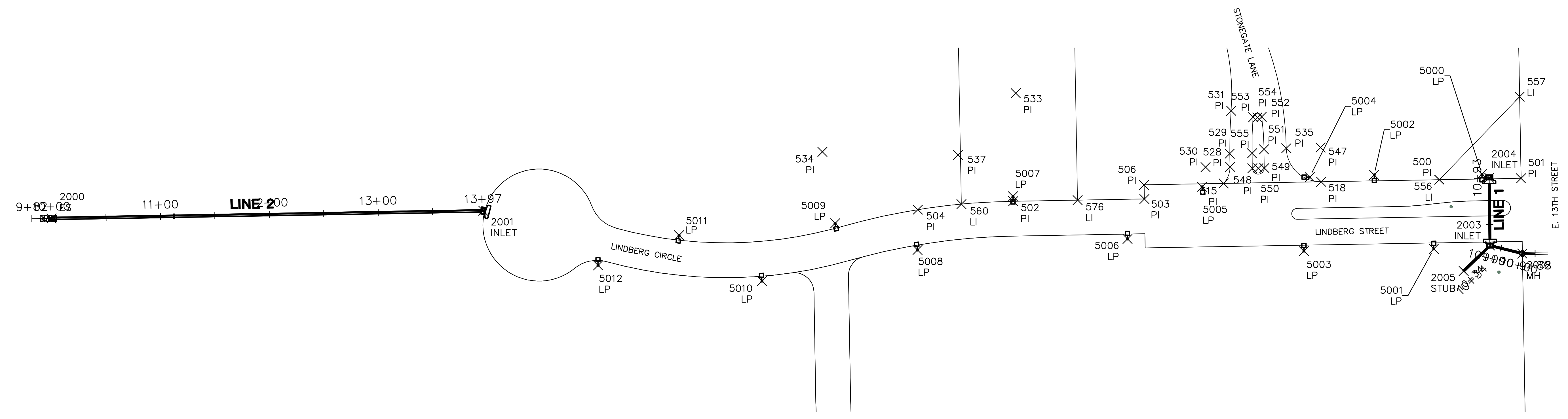
**ELECTRICAL SITE LIGHTING PLANS FOR
WATERFRONT SIXTH ADDITION
PART B**

**ELECTRICAL
BUBBLE MAP**
SHEET TITLE
472-84626
PROJECT NUMBER

DFL / JWC / GLA
DESIGNED / DRAWN / CHECKED

ISSUED
August 2013
REVISED

SHEET NO.
6 of 12



PLAT POINTS			
Point #	Northing	Easting	Desc.
500	1694557.30	1683275.39	PI
501	1694482.31	1683276.68	PI
502	1694948.71	1683255.65	PI
503	1694828.23	1683257.72	PI
504	1695036.10	1683247.90	PI
505	1694938.10	1682639.74	PI
506	1694828.45	1683270.72	PI
507	1694488.72	1683648.60	PI
508	1694493.39	1683890.87	PI
509	1695048.30	1683881.08	PI
510	1694760.62	1683886.15	PI
511	1695043.63	1683638.81	PI
512	1694763.58	1683433.89	PI
513	1694768.77	1683727.73	PI
514	1694345.14	1683588.24	PI
515	1694755.29	1683271.98	PI
516	1694707.63	1683887.09	PI
517	1694740.13	1683886.51	PI
518	1694665.81	1683273.52	PI
519	1694728.13	1683886.73	PI
520	1694727.67	1683861.01	PI
521	1694759.97	1683758.80	PI
522	1695133.51	1683847.83	PI
523	1694757.44	1683838.48	PI
524	1694953.06	1683804.82	PI

PLAT POINTS			
Point #	Northing	Easting	Desc.
525	1694760.32	1683869.10	PI
526	1694558.85	1683872.66	PI
527	1694707.18	1683861.38	PI
528	1694749.56	1683287.38	PI
529	1694749.77	1683299.26	PI
530	1694772.05	1683286.99	PI
531	1694748.51	1683338.84	PI
532	1694756.43	1683412.59	PI
533	1694946.36	1683354.91	PI
534	1695123.86	1683301.00	PI
535	1694697.85	1683304.39	PI
536	1694723.64	1683420.51	PI
537	1694999.29	1683298.36	PI
538	1694729.05	1683743.20	PI
539	1694345.14	1683588.24	PI
540	1695008.63	1683856.06	PI
541	1694736.28	1683835.93	PI
542	1694737.23	1683841.96	PI
543	1694728.33	1683836.22	PI
544	1694739.83	1683869.46	PI
545	1694732.32	1683836.50	PI
546	1694348.33	1683306.34	PI
547	1694666.36	1683305.02	PI
548	1694729.03	1683285.93	PI
549	1694718.03	1683286.13	PI

PLAT POINTS			
Point #	Northing	Easting	Desc.
550	1694723.53	1683286.03	PI
551	1694718.33	1683303.31	PI
552	1694720.45	1683333.09	PI
553	1694728.40	1683332.87	PI
554	1694724.41	1683332.60	PI
555	1694729.27	1683299.62	PI
556	1694557.30	1683275.39	LI
557	1694483.60	1683351.67	LI
558	1695045.36	1683728.19	LI
559	1694935.37	1683730.14	LI
560	1694996.19	1683253.00	LI
561	1695002.76	1683593.93	LI
562	1694733.16	1683443.88	LI
563	1694485.28	1683448.66	LI
564	1694759.03	1683578.41	LI
565	1694487.60	1683583.64	LI
566	1694739.64	1683713.81	LI
567	1694490.07	1683718.62	LI
568	1695042.75	1683593.22	LI
569	1694791.04	1683597.66	LI
570	1695000.16	1683458.95	LI
571	1694930.61	1683460.18	LI
572	1694935.05	1683712.11	LI
573	1694772.76	1683714.97	LI
574	1694930.25	1683439.87	LI

STORM WATER SEWER POINTS			
Point #	Northing	Easting	Desc.
2000	1695831.65	1683239.85	ES
2001	1695435.21	1683246.84	INLET
2002	1694481.12	1683207.53	MH
2003	1694510.84	1683214.90	INLET
2004	1694511.52	1683277.09	INLET
2005	1694534.98	1683191.53	STUB

LIGHT POLE POINTS			
Point #	Northing	Easting	Desc.
5000	1694518.15	1683280.49	LP
5001	1694562.41	1683211.79	LP
5002	1694617.11	1683279.86	LP
5003	1694681.62	1683209.74	LP
5004	1694676.30	1683277.82	LP
5005	1694775.23	1683268.90	LP
5006	1694843.70	1683220.95	LP
5007	1694948.80	1683260.15	LP
5008	1695036.47	1683210.83	LP
5009	1695112.17	1683235.37	LP
5010	1695179.32	1683182.18	LP
5011	1695255.42	1683224.32	LP
5012	1695329.76	1683196.72	LP