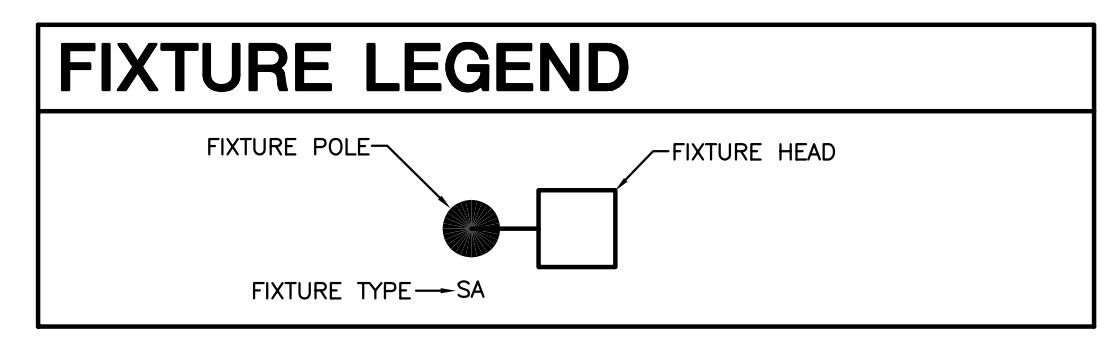


- KEYED NOTES**
1. PROVIDE AND INSTALL 6" SCHEDULE 80 PVC SLEEVE. ROUTE CONDUIT AS INDICATED ON THE FEEDER SCHEDULE THROUGH 6" SLEEVE.
 2. EXISTING PEDESTAL 'A'. UTILIZE EXISTING PANEL 'A1' FOR NEW LIGHTING CIRCUIT.
 3. EXISTING 6" SCHEDULE 80 PVC SLEEVE. ROUTE CONDUIT AS INDICATED IN FEEDER SCHEDULE THROUGH 6" SLEEVE.
 4. EXISTING PULL-BOX SHALL BE UTILIZED FOR NEW FEEDER AND CIRCUITING AS SHOWN IN FEEDER SCHEDULE.
 5. SEE POLE BASE DETAIL 1/5 FOR CONSTRUCTION AND INSTALLATION REQUIREMENTS. TYPICAL OF ALL LIGHT FIXTURE POLES.
 6. VERIFY DEPTH OF UTILITY PIPING WHEN ROUTING CONDUIT.
 7. SEE PULL-BOX DETAIL 2/5 FOR PULL-BOX SIZE AND INSTALLATION REQUIREMENT.

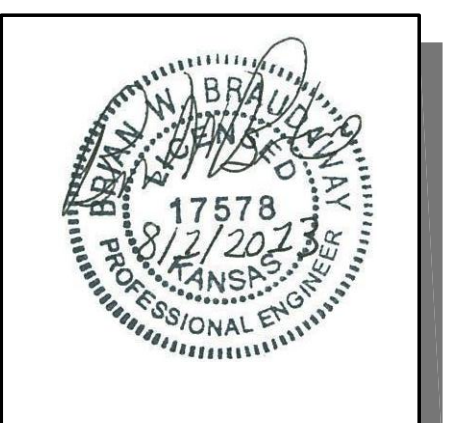
- GENERAL NOTES**
1. UPON COMPLETION OF PROJECT, E.C. SHALL PROVIDE A FULL TYPED PANEL DIRECTORY FOR EACH PANELBOARD.
 2. REFER TO CIVIL PLANS FOR PROJECT PHASING INFORMATION.
 3. FEEDER ROUTING INDICATED ON THE DRAWINGS DOES NOT ALWAYS INDICATE NATIONAL ELECTRICAL CODE REQUIRED PULL BOXES. E.C. SHALL BE RESPONSIBLE FOR LOCATING AND INSTALLING REQUIRED PULL BOXES FOR EACH FEEDER.
 4. E.C. SHALL COORDINATE WITH CIVIL ENGINEER AND G.C. FOR ANY TRENCHING REQUIRED FOR CONDUIT AND COORDINATION WITH OTHER UTILITIES. GAS LINES ARE TYPICALLY ROUTED ADJACENT TO POWER CONDUITS. MAINTAIN 12" MINIMUM DISTANCE AT ALL LOCATIONS.

FEEDER SCHEDULE

(A)	(2)-#12 & (1)-#12 GND. IN 1" C.	A1:2,4
-----	---------------------------------	--------



MKEC
 ENGINEERING
 CONSULTANTS, INC.
 411 NORTH WEBB ROAD
 WICHITA, KS 67206
 PHONE: 316.684.9600
 FAX: 316.616.0841
 WWW.MKEC.COM



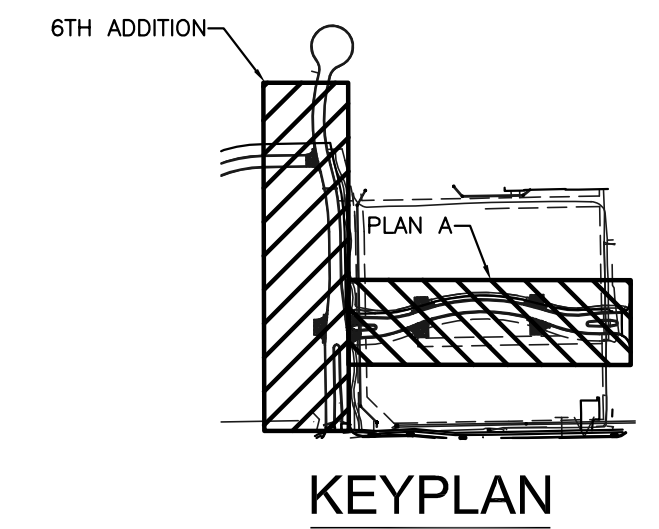
**ELECTRICAL SITE LIGHTING PLANS FOR
 WATERFRONT EIGHTH ADDITION
 PART B**

**ELECTRICAL
 SITE PLAN**
 SHEET TITLE
472-85097
 PROJECT NUMBER

CNG / JSR / BWB
 DESIGNED DRAWN CHECKED

ISSUED
August 2013
 REVISED

SHEET NO.
3 of 12



A **ELECTRICAL SITE PLAN**
 SCALE: 1" = 30'-0"
 0 4' 30' 60'

PLOTTED: Thursday, August 01, 2013 10:02:58PM
 H:\CIVIL\02014\8TH_ADD\ELEC\E2.0.DWG