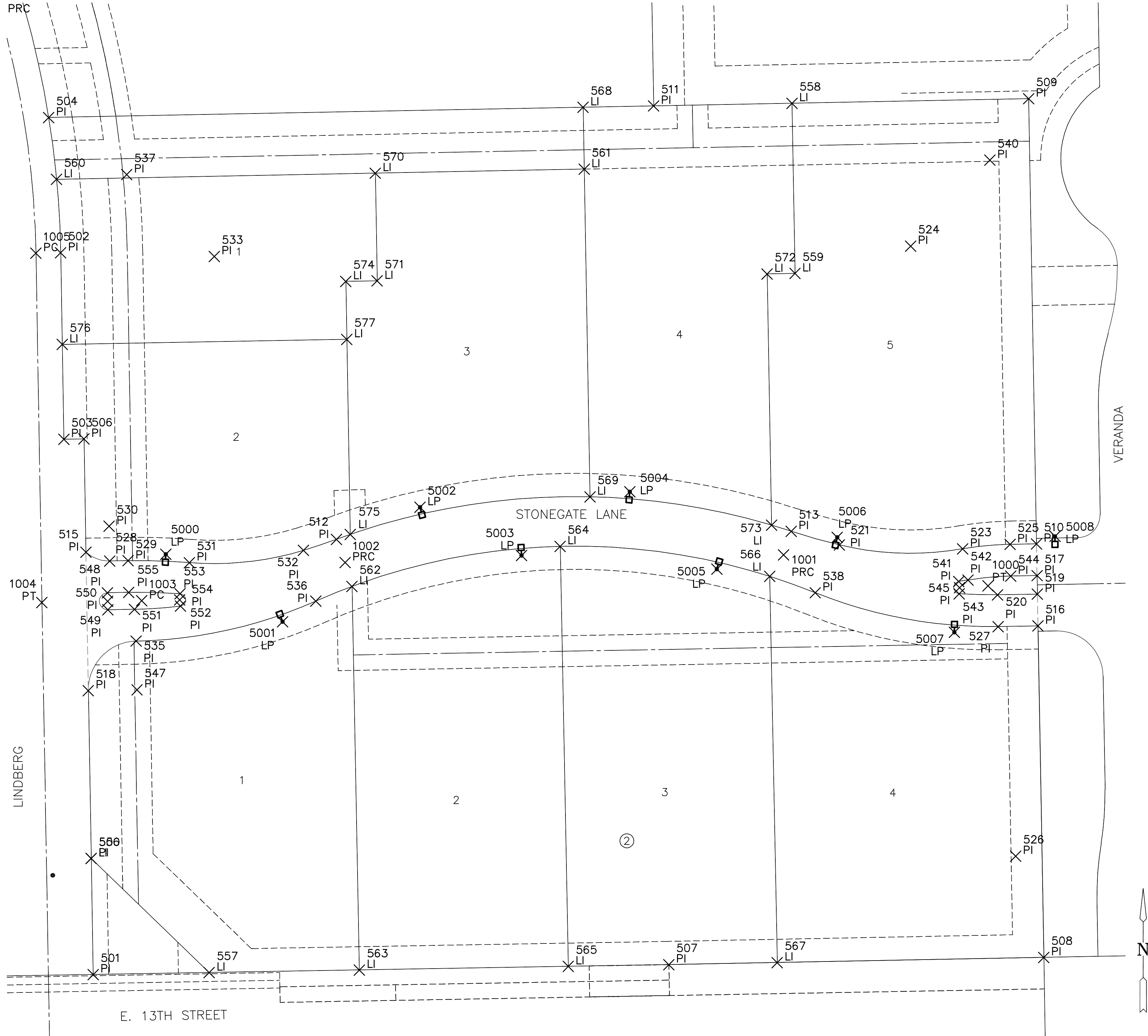


PLOTTED: Tuesday, August 06, 2013 @ 04:10PM



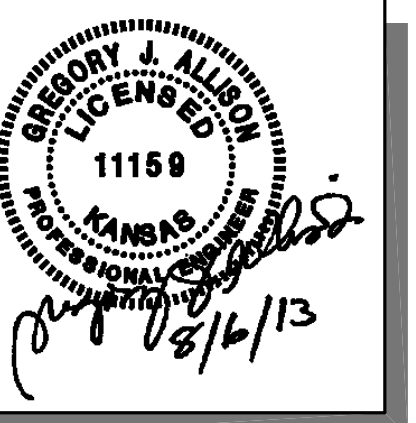
PLAT POINTS			
Point #	Northing	Easting	Desc.
500	1694557.30	1683275.39	PI
501	1694482.31	1683276.68	PI
502	1694948.71	1683255.65	PI
503	1694828.23	1683257.72	PI
504	1695036.10	1683247.90	PI
505	1694938.10	1682639.74	PI
506	1694828.45	1683270.72	PI
507	1694488.72	1683648.60	PI
508	1694493.39	1683890.87	PI
509	1695048.30	1683881.08	PI
510	1694760.62	1683886.15	PI
511	1695043.63	1683638.81	PI
512	1694763.58	1683433.89	PI
513	1694768.77	1683727.73	PI
514	1694345.14	1683588.24	PI
515	1694755.29	1683271.98	PI
516	1694707.63	1683887.09	PI
517	1694740.13	1683886.51	PI
518	1694665.81	1683273.52	PI
519	1694728.13	1683886.73	PI
520	1694727.67	1683861.01	PI
521	1694759.97	1683758.80	PI
522	1695133.51	1683847.83	PI
523	1694953.06	1683804.82	PI
524	1694760.32	1683869.10	PI
525	1694558.85	1683872.66	PI
526	1694707.18	1683861.38	PI
527	1694749.56	1683287.38	PI
528	1694749.77	1683299.26	PI
529	1694772.05	1683286.99	PI
530	1694772.05	1683286.99	PI
531	1694748.51	1683338.84	PI
532	1694756.43	1683412.59	PI
533	1694946.36	1683354.91	PI
534	1695123.86	1683301.00	PI
535	1694697.85	1683304.39	PI
536	1694723.64	1683420.51	PI
537	1694999.29	1683298.36	PI
538	1694729.05	1683743.20	PI
539	1694345.14	1683588.24	PI
540	1695008.63	1683856.06	PI
541	1694736.28	1683835.93	PI
542	1694737.23	1683841.96	PI
543	1694728.33	1683836.22	PI
544	1694739.83	1683869.46	PI
545	1694732.32	1683836.50	PI
546	1694348.33	1683306.34	PI
547	1694666.36	1683305.02	PI
548	1694729.03	1683285.93	PI
549	1694718.03	1683286.13	PI
550	1694723.53	1683286.03	PI
551	1694718.33	1683303.31	PI
552	1694720.45	1683333.09	PI
553	1694728.40	1683332.87	PI
554	1694724.41	1683332.60	PI
555	1694729.27	1683299.62	PI
556	1694557.30	1683275.39	LI
557	1694483.60	1683351.67	LI
558	1695045.36	1683728.19	LI
559	1694935.37	1683730.14	LI

PLAT POINTS			
Point #	Northing	Easting	Desc.
560	1694996.19	1683253.00	LI
561	1695002.76	1683593.93	LI
562	1694733.16	1683443.88	LI
563	1694485.28	1683448.66	LI
564	1694759.03	1683578.41	LI
565	1694487.60	1683583.64	LI
566	1694739.64	1683713.81	LI
567	1694490.07	1683718.62	LI
568	1695042.75	1683593.22	LI
569	1694791.04	1683597.66	LI
570	1695000.16	1683458.95	LI
571	1694930.61	1683460.18	LI
572	1694935.05	1683712.11	LI
573	1694772.76	1683714.97	LI
574	1694930.25	1683439.87	LI
575	1694766.75	1683442.76	LI
576	1694889.53	1683256.67	LI
577	1694892.77	1683440.54	LI

PAVING POINTS			
Point #	Northing	Easting	Desc.
1000	1694733.57	1683854.89	PT
1001	1694753.57	1683722.73	PRC
1002	1694748.57	1683439.43	PRC
1003	1694723.92	1683308.06	PC
1004	1694722.78	1683243.54	PT
1005	1694948.43	1683239.65	PC
1006	1695102.69	1683216.73	PRC
1007	1695116.31	1683213.10	PT
1008	1695318.82	1683215.79	PT
1009	1695113.88	1683071.62	PT
1010	1695050.29	1682892.04	PRC
1011	1695014.06	1682818.27	PC
1012	1695002.95	1682774.66	PT

LIGHT POLES POINTS			
Point #	Northing	Easting	Desc.
5000	1694753.96	1683323.59	LP
5001	1694710.33	1683399.04	LP
5002	1694784.32	1683487.88	LP
5003	1694753.16	1683553.49	LP
5004	1694794.27	1683623.36	LP
5005	1694744.32	1683679.63	LP
5006	1694764.91	1683757.42	LP
5007	1694703.51	1683833.07	LP
5008	1694765.48	1683898.12	LP

MKEC
ENGINEERING
CONSULTANTS, INC.
411 NORTH WEBB ROAD
WICHITA, KS 67206
PHONE: 316.684.9600
FAX: 316.616.0841
WWW.MKEC.COM



**ELECTRICAL SITE LIGHTING PLANS FOR
WATERFRONT EIGHTH ADDITION
PART B**

**ELECTRICAL
BUBBLE MAP**
SHEET TITLE
472-85097
PROJECT NUMBER

DFL / JWC / GLA
DESIGNED / DRAWN / CHECKED

ISSUED
August 2013

REVISED

SHEET NO.
6 of 12

H:\CIVIL\02014\8TH_ADD\ELEC\ACAD-02014_EB.DWG