

Central Ave.

Estimated 16 Service Reconnections (4")
Estimated 20 lf Silt Fence
Estimated 20 sy Erosion Control Mat
Estimated 1 Construction Entrance

Seeding will be allowed on this Site.

Pinecrest

Parkwood

325'

MH 5847-328
5225 E Plaza
Approx depth = 8.5 ft

Plaza Lane

MH 5847-332
Replace MH Frame & Cover
Construct Outside Drop
5225 E Plaza
Approx depth = 12.5 ft

MH 5847-333
5321 E Plaza
Est. depth = 12.0 ft

5203

5225

5321

140'

296'

275'

5202

5326

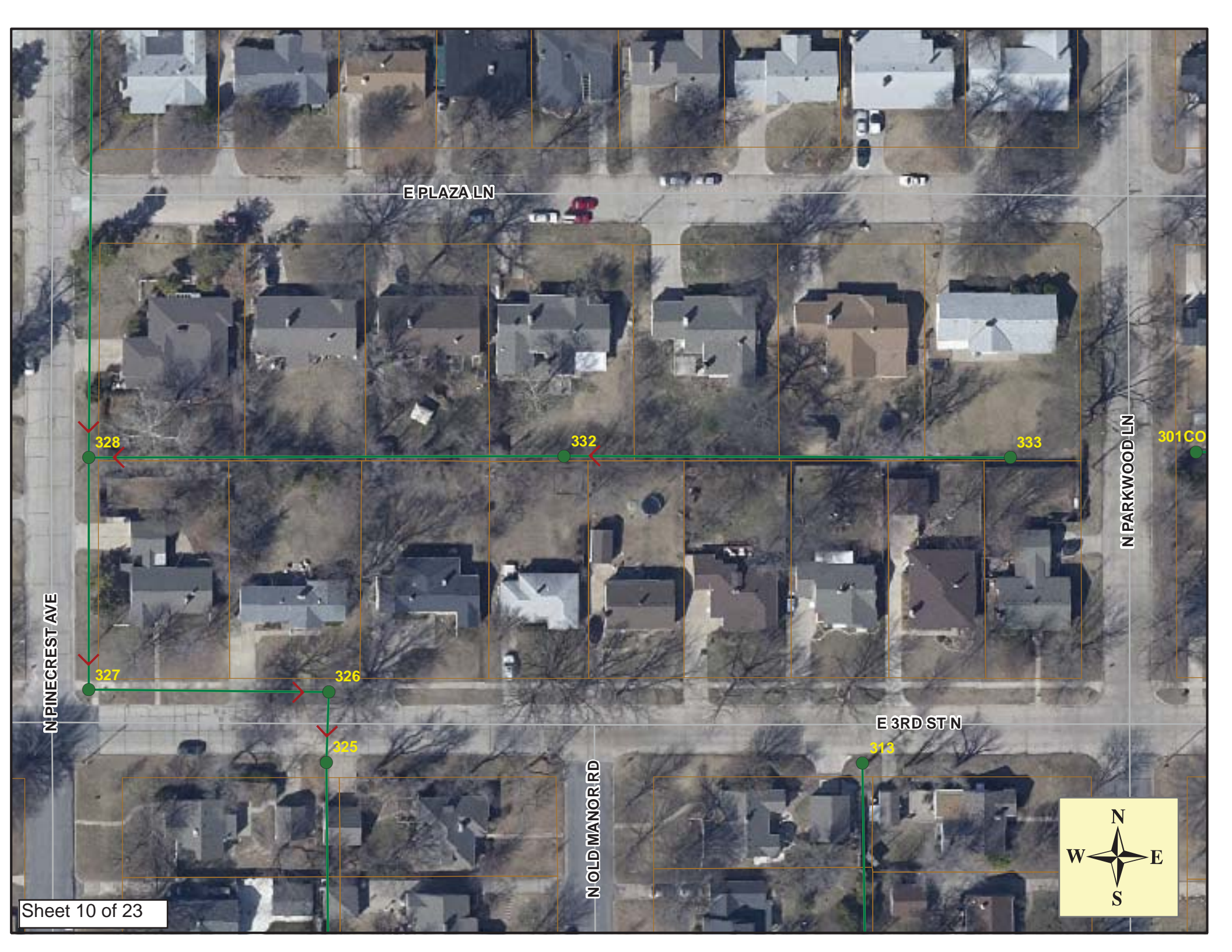
Remove 571 lf of 8" Pipe
Install 571 lf of 8" Pipe

3rd Street North

SITE 2

Sheet 9 of 23





E PLAZA LN

N PARKWOOD LN

N PINECREST AVE

N OLD MANOR RD

E 3RD ST N

328

332

333

301CO

327

326

325

313





Video Inspection Master Report

8/2/2012

1:26 PM

US Structure: 5847-333 5321 E PLAZA LN Date Insp: 5/29/2012 Basin: E04D
 DS Structure: 5847-332 5225 E PLAZA LN Dir Televised: Downstream To Upstream

Pipe Information

Shape: Round Length Status: Project No. : E-179
 Dia/Ht: 8 Material: VCP Index:
 Length: 297.8 Slope: 0.400 Surface:

Obs. #	VTR Counter	Distance	Location	Description	Rating	Obsrvd (gpm)	Ratings			Remain (gpm)
							Est. (gpm)	Struct	Clean	
1		0.0	TV AGAINST FLOW	5847-332 DS Manhole	1					
2		6.0		Broken Pipe	5					
3		12.5		Roots	3					
4		18.0		Roots	3					
5		21.6		Sealed Off Wye	1					
6		23.2		Sealed Off Wye	4					
7		25.2		Roots	3					
8		26.1		Crack-Horizontal	5					bad horizontal cracks in all quads
9		28.5		Crack-Horizontal	4					
10		31.8		Roots	4					
11		35.3		Crack-Horizontal	4					
12		36.9		Crack-Horizontal	4					
13		40.2		Crack-Horizontal	4					
14		42.9		Roots	2					
15		46.4		Crack-Horizontal	4					
16		52.8	5302 E 3RD ST N	Wye Service	1					
17		55.0		Sealed Off Wye	1					
18		70.1		Roots	2					
19		76.2		Roots	3					
20		82.8	5308 E 3RD ST N / full of roots	Wye Service	5					
21		85.4	5303 E PLAZA	Wye Service	2					
22		94.6		Roots	1					
23		106.5		Roots	2					
24		113.1		Sealed Off Wye	1					
25		116.4		Sealed Off Wye	1					
26		131.2		Roots	1					
27		134.3		Roots	4					
28		143.8		Sealed Off Wye	1					
29		146.7		Sealed Off Wye	2					
30		150.1		Crack-Horizontal	2					
31		174.1	5314 E 3RD ST N	Wye Service	1					
32		177.0	5315 E PLAZA	PVC Break-In Conn	1					
33		178.0		Crack-Horizontal	3					



Video Inspection Master Report

8/2/2012

1:26 PM

US Structure: 5847-333 5321 E PLAZA LN Date Insp: 5/29/2012 Basin: E04D
 DS Structure: 5847-332 5225 E PLAZA LN Dir Televised: Downstream To Upstream

34	180.3		Crack-Horizontal	2
35	197.8		Roots	2
36	201.8		Broken Pipe	4
37	208.1		Sealed Off Wye	4
38	208.4		Broken Pipe	4
39	210.6		Broken Pipe	4
40	214.9		Roots	4
41	214.9		Broken Pipe	4
42	217.5		Broken Pipe	4
43	223.0		Broken Pipe	3
44	226.2		Crack-Horizontal	3
45	232.2	5320 E 3RD ST N	PVC Break-In Conn	1
46	235.3		Sealed Off Wye	1
47	256.8		Broken Pipe	4
48	259.5	5326 E 3RD ST N	Wye Service	4
49	262.4	5321 E PLAZA	Wye Service	1
50	268.3		Roots	1
51	269.1		Crack-Horizontal	2

A manhole was constructed "by others" at approx. 275 ft. The easterly 15 lf was badly broken up with a cleanout at the end. So the easterly 15 lf was abandoned with the construction of the manhole.

Pipe in poor condition

An attempt was made to line this pipe with cured-in-place liner and it was determined that the pipe is too badly busted and shifted for that method of rehab. Pipe must be excavated and replaced. -LML



Video Inspection Master Report

8/2/2012

1:26 PM

US Structure: 5847-332 5225 E PLAZA LN Date Insp: 5/23/2012 Basin: E04D
 DS Structure: 5847-328 415 PINECREST AV Dir Televised: Downstream To Upstream

Pipe Information

Shape: Round Project No. : E-179
 Dia/Ht: 8 Material: VCP
 Length: 296.7 Slope: 0.350

Obs. #	VTR Counter	Distance	Location	Description	Rating	Ratings			Remain (gpm)
						Obsrvd (gpm)	Est. (gpm)	Struct Clean	
1		0.0	5847-328	DS Manhole	1	TV Against the Flow			
2		12.1		Sealed Off Wye	1				
3		12.1		Roots	1				
4		14.9		Sealed Off Wye	1				
5		14.9		Roots	1				
6		21.2		Roots	1				
7		24.7		Broken Pipe	4				
8		27.6		Broken Pipe	4				
9		31.1		Broken Pipe	3				
10		32.4		Broken Pipe	4				
11		33.8		Broken Pipe	4				
12		36.7		Broken Pipe	3				
13		42.3	5202 E 3RD ST N	Wye Service	1				
14		43.1		Crack-Horizontal	4				
15		45.7	5203 E PLAZA	Wye Service	3				
16		46.3		Broken Pipe	3				
17		48.6		Roots	2				
18		49.1		Broken Pipe	4				
19		52.8		Crack-Horizontal	1				
20		57.9		Roots	1				
21		64.9		Crack-Horizontal	1				
22		66.9		Roots	2				
23		70.2		Roots	3				
24		73.0	Seal is broken & roots entering	Sealed Off Wye	4				
25		73.0		Roots	2				
26		76.1	Roots	Sealed Off Wye	3				
27		79.3		Roots	1				
28		85.6		Roots	2				
29		103.5	5212 E 3RD ST N	PVC Break-In Conn	2				
30		106.4	5211 E PLAZA	PVC Break-In Conn	1				
31		134.2		Sealed Off Wye	1				
32		136.7		Sealed Off Wye	1				
33		164.5		Sealed Off Wye	1				



Video Inspection Master Report

8/2/2012

1:26 PM

US Structure: 5847-332 **5225 E PLAZA LN** **Date Insp:** 5/23/2012 **Basin:** E04D
DS Structure: 5847-328 **415 PINECREST AV** **Dir Televised:** Downstream To Upstream

34	167.7		Sealed Off Wye	1
35	176.5		Roots	1
36	195.1		Sealed Off Wye	1
37	198.1		Sealed Off Wye	1
38	225.4	5220 E 3RD ST N	Wye Service	1
39	228.4	5219 E PLAZA	Roots / Wye Service	4
40	250.8		Mat. Chngs to PVC	1
41	271.3		Mat. Chngs to VCP	1
42	285.6	5226 E 3RD ST N	Roots / Wye Service	2
43	289.8	5225 E PLAZA	/ Roots Wye Service	4
45	287.1		Debris	2
46	288.1		Debris	2
44	294.4	5847-332 (under wire fence) (access from 5225 Plaza)	US Manhole	1

An attempt was made to line this pipe with cured-in-place liner and it was determined that the pipe is too badly busted and shifted for that method of rehab. Pipe must be excavated and replaced. -LML