

5725 E. Kellogg

MH 5846-037  
Approx depth =10.2 ft

Remove and replace 16 lf of Concrete Pavement (incl curb/gutter)  
Install 16 lf of Flowable Fill  
Remove and replace 4 lf of Concrete Sidewalk

Point Repair:  
Remove and replace 57 lf of 8" pipe from the north wall of  
MH 5846-036 to 57 lf north. (north end of the repair should  
be the north end of the existing PVC repair - see tv log)

CHRISTINE AVE.

27" PVC SS

ORME ST.

MH 5846-036  
602 S. Christine  
Remove & Replace MH Bench & Invert  
Replace MH Frame & Cover  
Approx depth =11.1 ft

Estimated 30 sy Erosion Control Mat  
Estimated 20 lf Back of Curb Protection  
Seeding will be allowed on this Site.

(there is no water or storm water  
located in Orme Street)  
(27" sanitary is well below the repair)

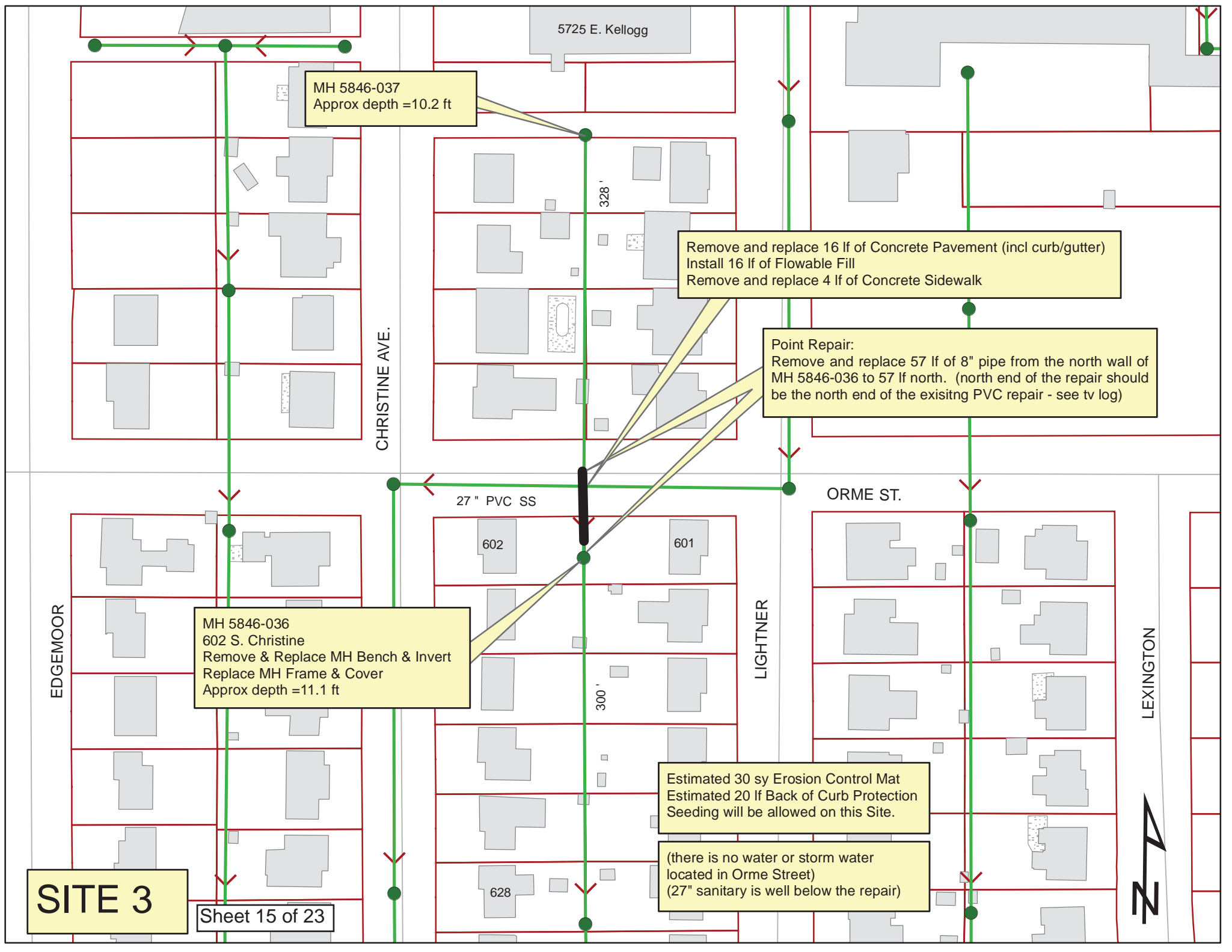
EDGEMOOR

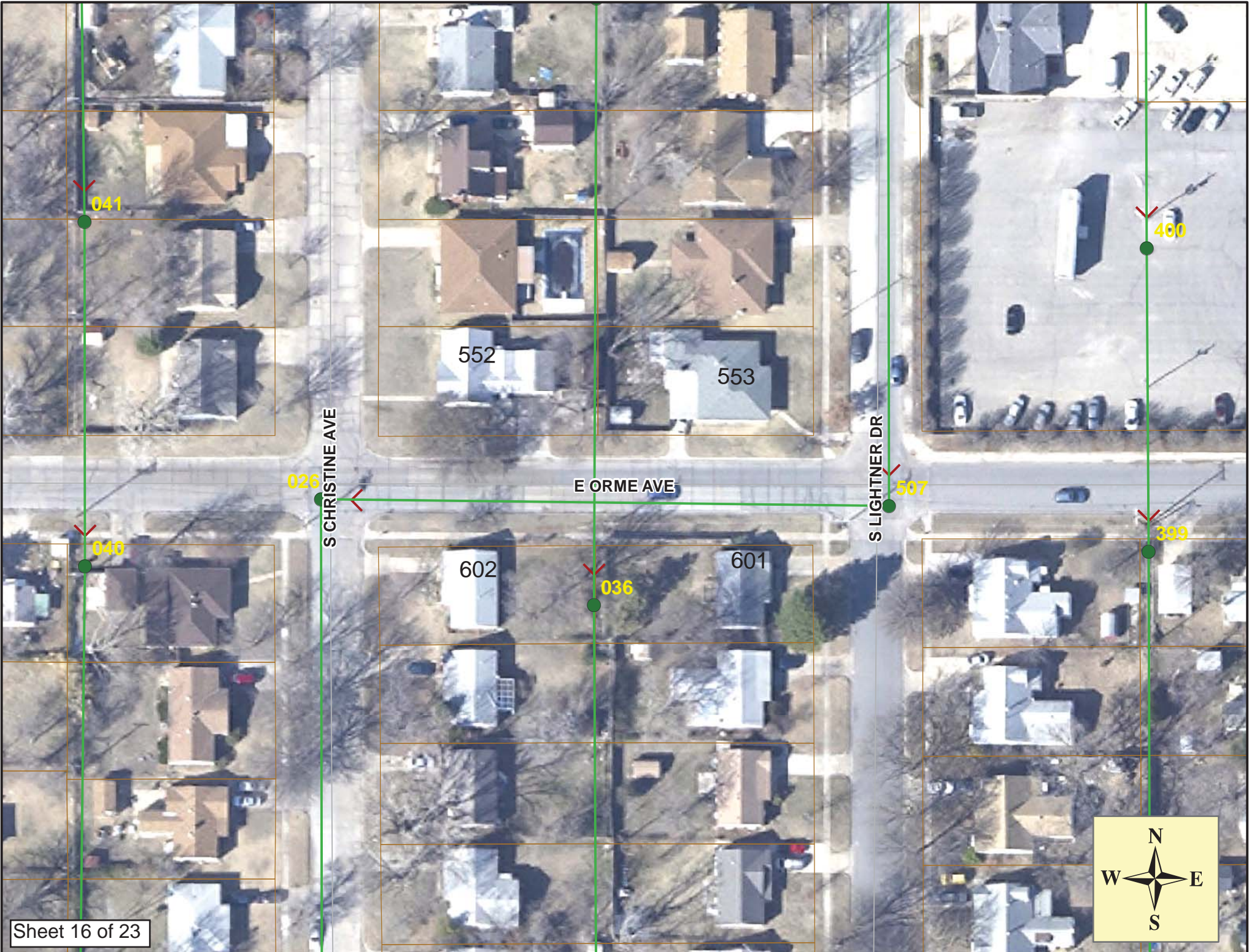
LIGHTNER

LEXINGTON

**SITE 3**

Sheet 15 of 23





## Video Inspection Master Report

3/1/2013

2:41 PM

**US Structure:** 5846-037      **5725 S KELLOGG ST**      **Date Insp:** 3/2/2012      **Basin:** E04D  
**DS Structure:** 5846-036      **602 CHRISTINE ST**      **Dir Televised:** Upstream To Downstream

**Pipe Information**

<b>Shape:</b> Round	<b>Length Status:</b>	<b>Project No. :</b> F-144
<b>Dia/Ht:</b> 8	<b>Material:</b> VCP	<b>Index:</b>
<b>Length:</b> 326.8	<b>Slope:</b> 0.202	<b>Surface:</b> Paved & Unpaved

Obs. #	VTR Counter	Distance	Location	Description	Rating	Obsrvd (gpm)	Ratings			Remain (gpm)
							Est. (gpm)	Struct	Clean	
1		0.0	5846-037	US Manhole	1	0.000	0	0	0.000	
2		16.4		Crack-Radial	3	0.004	5	0	0.004	
3		39.1	534 S CHRISTINE	Wye Service	5	0.000	400	0	0.000	
4		42.3	537 S LIGHTNER	Wye Service	3	0.000	2	0	0.000	
5		46.6	Joint holding paper	Roots	3	0.008	5	8	0.008	
6		49.9		Roots	2	0.004	2	4	0.004	
7		77.3		Roots	1	0.002	1	1	0.002	
8		104.1	540 S CHRISTINE	Wye Service	3	0.000	2	0	0.000	
9		107.1	541 S LIGHTNER	Wye Service	5	0.000	400	0	0.000	
10		161.7	546 S CHRISTINE	Wye Service	1	0.000	0	0	0.000	
11		164.3	547 S LIGHTNER	Wye Service	1	0.000	0	0	0.000	
12		200.9		Roots	1	0.002	1	1	0.002	
13		210.1		Roots	2	0.004	2	4	0.004	
14		213.1		Roots	2	0.004	2	4	0.004	
15		219.2		Roots	1	0.002	1	1	0.002	
16		221.1	552 S CHRISTINE	Wye Service	1	0.000	0	0	0.000	
17		222.4		Roots	1	0.002	1	1	0.002	
18		223.3	553 S LIGHTNER	Break-In Conn	1	0.001	0	0	0.001	
19		271.3		Mat. Chngs to PVC	1	Pipe immediately dips downward to full sag				
20		272.4		Sag / then entire PVC repair is a sag	5	0.000	25	0	0.000	
21		282.3	Offset joint	Mat. Chngs to VCP	1	0.000	0	0	0.000	
24		284.1	Offset joint	Sag ends	1	0.000	1	0	0.000	
25		292.7		Sag begins	2	0.000	2	0	0.000	
26		294.1		Sag / lens submerged	5	0.000	25	0	0.000	
27		298.7		Sag / lens emerged	1	0.000	1	0	0.000	
28		298.7		Sag ends	1	0.000	1	0	0.000	
29		328.0	5846-036	DS Manhole	3					

The flowline of the 27" sanitary sewer is approx. 10 feet below the flowline of the 8" sewer. There is a utility pole and guy wire in the south parking of Orme Street. -LML