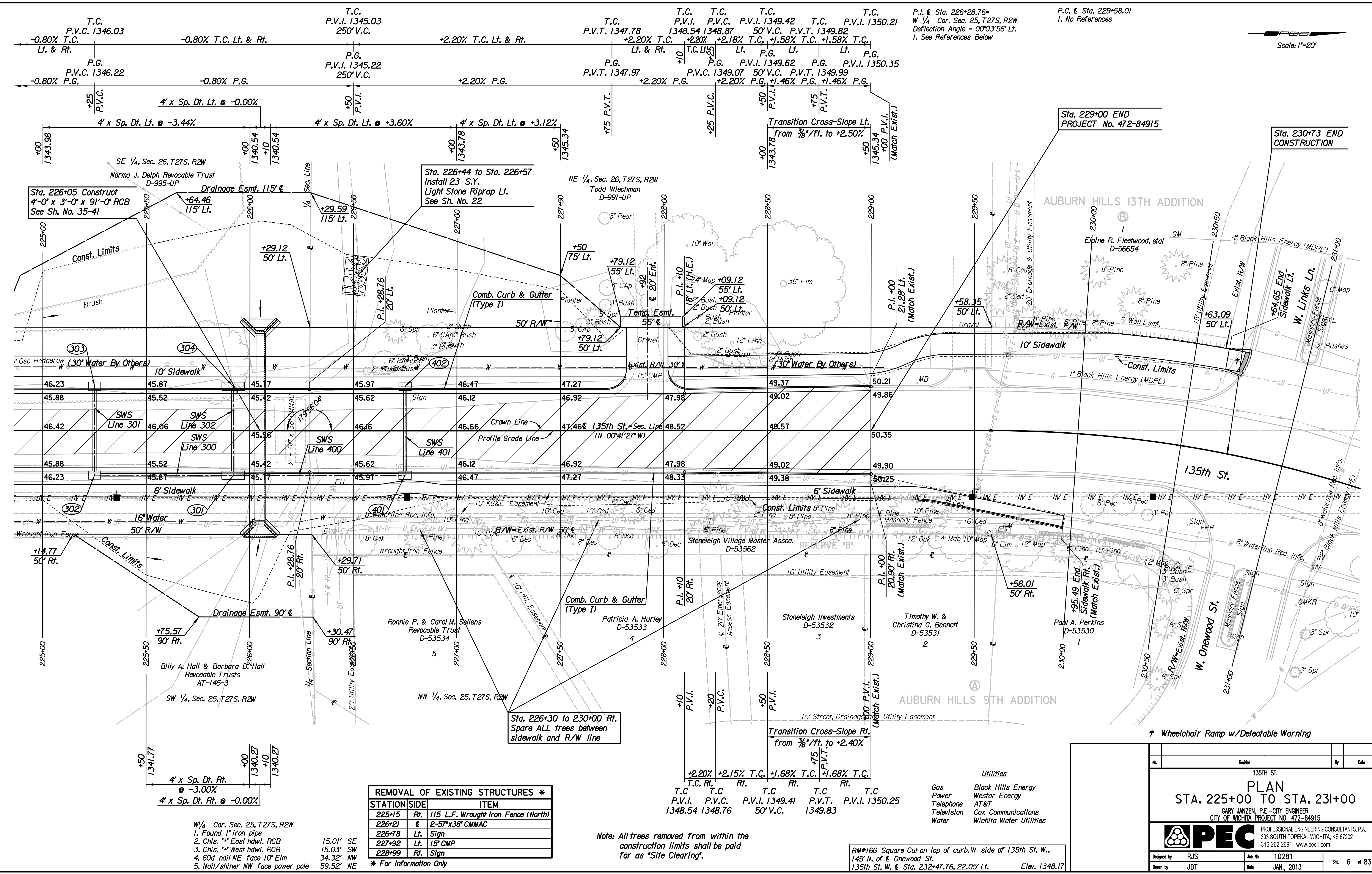


Plotted By: svb Date: 2/25/2013 10:37:16 AM
 FILE: I:\2010\10281\Plan\10281-PL225.dgn



P.I. & Sta. 226+28.76-
 W 1/4 Cor. Sec. 25, T27S, R2W
 Deflection Angle = 00°03'56" Lt.
 1. See References Below

P.C. & Sta. 229+58.01
 1. No References

Scale: 1"=20'

Sta. 226+05 Construct
 4'-0" x 3'-0" x 9'-0" RCB
 See Sh. No. 35-41

Sta. 226+44 to Sta. 226+57
 Install 23 S.Y.
 Light Stone Riprap Lt.
 See Sh. No. 22

Sta. 226+30 to 230+00 Rt.
 Spare ALL trees between
 sidewalk and R/W line

REMOVAL OF EXISTING STRUCTURES *		
STATION	SIDE	ITEM
225+15	Rt.	115 L.F. Wrought Iron Fence (North)
226+21	€	2'-57"x38" CMMAC
226+78	Lt.	Sign
227+92	Lt.	15' CMP
228+99	Rt.	Sign

* For Information Only

W 1/4 Cor. Sec. 25, T27S, R2W
 1. Found 1" iron pipe
 2. Chis. ** East hawl. RCB
 3. Chis. ** West hawl. RCB
 4. 60d nail NE face 10' Elm
 5. Nail/shiner NW face power pole

15.01' SE
 15.03' SW
 34.32' NW
 59.52' NE

Note: All trees removed from within the construction limits shall be paid for as 'Site Clearing'.

BM*166 Square Cut on top of curb, W side of 135th St. W., 145' N. of E Onewood St. 135th St. W. & Sta. 232+47.76, 22.05' Lt. Elev. 1348.17

Utilities
 Gas Black Hills Energy
 Power Westar Energy
 Telephone AT&T
 Television Cox Communications
 Water Wichita Water Utilities

† Wheelchair Ramp w/ Detectable Warning

No.	Revision	By	Date
135TH ST.			
PLAN			
STA. 225+00 TO STA. 231+00			
GARY JANZEN, P.E.—CITY ENGINEER CITY OF WICHITA PROJECT NO. 472-84915			
PEC PROFESSIONAL ENGINEERING CONSULTANTS, P.A. 303 SOUTH TOPEKA WICHITA, KS 67202 316-262-2691 www.pec1.com			
Designed by	RJS	Job No.	10281
Drawn by	JDT	Date	JAN, 2013
			Sh. 6 of 83