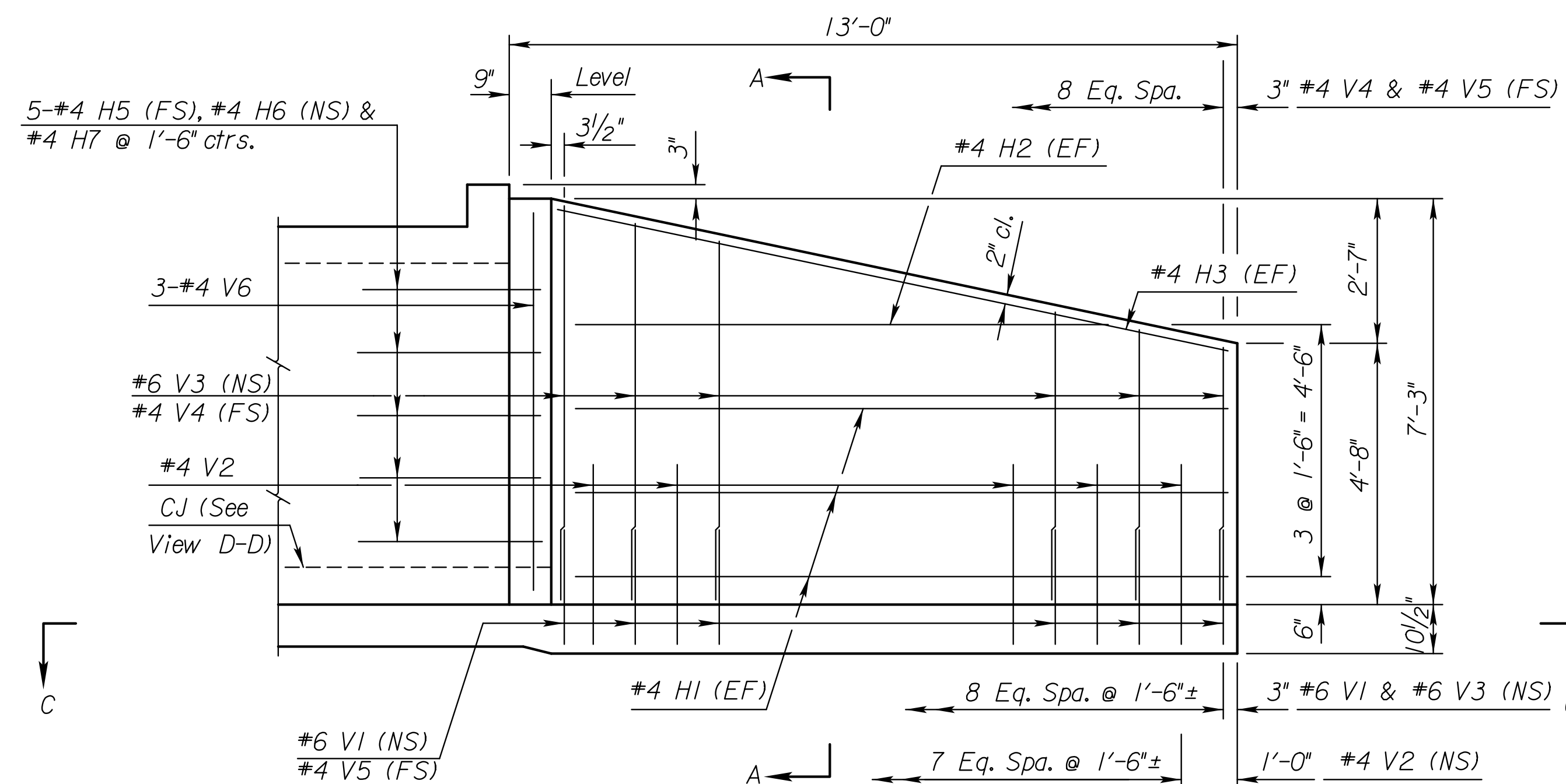


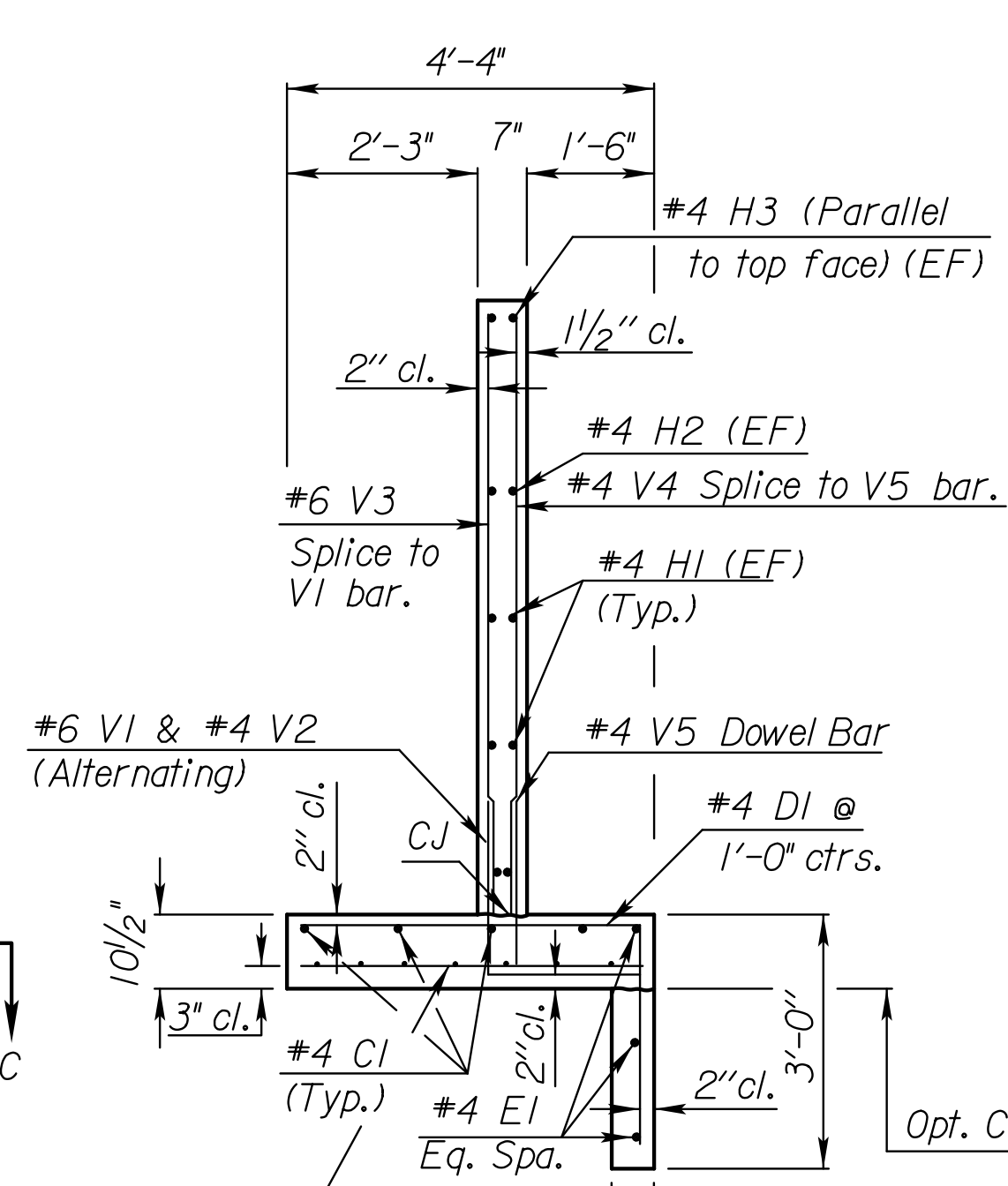
STATE	PROJECT NO.	YEAR	SHEET NO.	TOTAL SHEETS
KANSAS	472-84915	2013	32	83

GENERAL NOTES

DESIGN SPECIFICATION: AASHTO LRFD Spec., 2007 Ed., 2009 Int.
DESIGN LOADING: HL93
UNIT STRESSES: Grade 4.0 Concrete; f'c = 4,000 p.s.i.
Reinforcing Steel; fy = 60,000 p.s.i.
CONCRETE: Grade 4.0 Concrete shall be used throughout. Bevel all exposed edges with a 3/4" triangular mauling.
REINFORCING: All reinforcing shall conform to ASTM A615, Grade 60. Welded Wire Fabric shall conform to ASTM A185. All dimensions relative to reinforcing steel shall be to centerline of bar unless otherwise noted. Wire Reinforcing mesh shall be electrically welded and shall be composed of 6 x 6- W6 x W6 welded wire fabric and shall be classified as pounds of reinforcing and included in the total quantity for the bid item Reinforcing Steel (Gr. 60)
QUANTITIES: Wingwall Quantities include all quantities outside the neat lines of the box, excluding the hubguard.
APRON: A 5' concrete slab shall be constructed between the downstream wings in locations subject to scour only when specified on the plans or by the Engineer.
BACKFILL MATERIAL: Use Granular Backfill material meeting the requirements of SB-1, SB-2, SCA-2, SCA-3 or SCA-5. Backfill all wings to limits shown on the "RCB Auxiliary Sheet"
FILTER FABRIC: Separate in-situ material from granular backfill with approved filter fabric complying with Section 1710. Filter Fabric is subsidiary to "Granular Backfill".
FOUNDATION STABILIZATION: Use Foundation Stabilization on all wingwalls unless founded on rock or granular material.

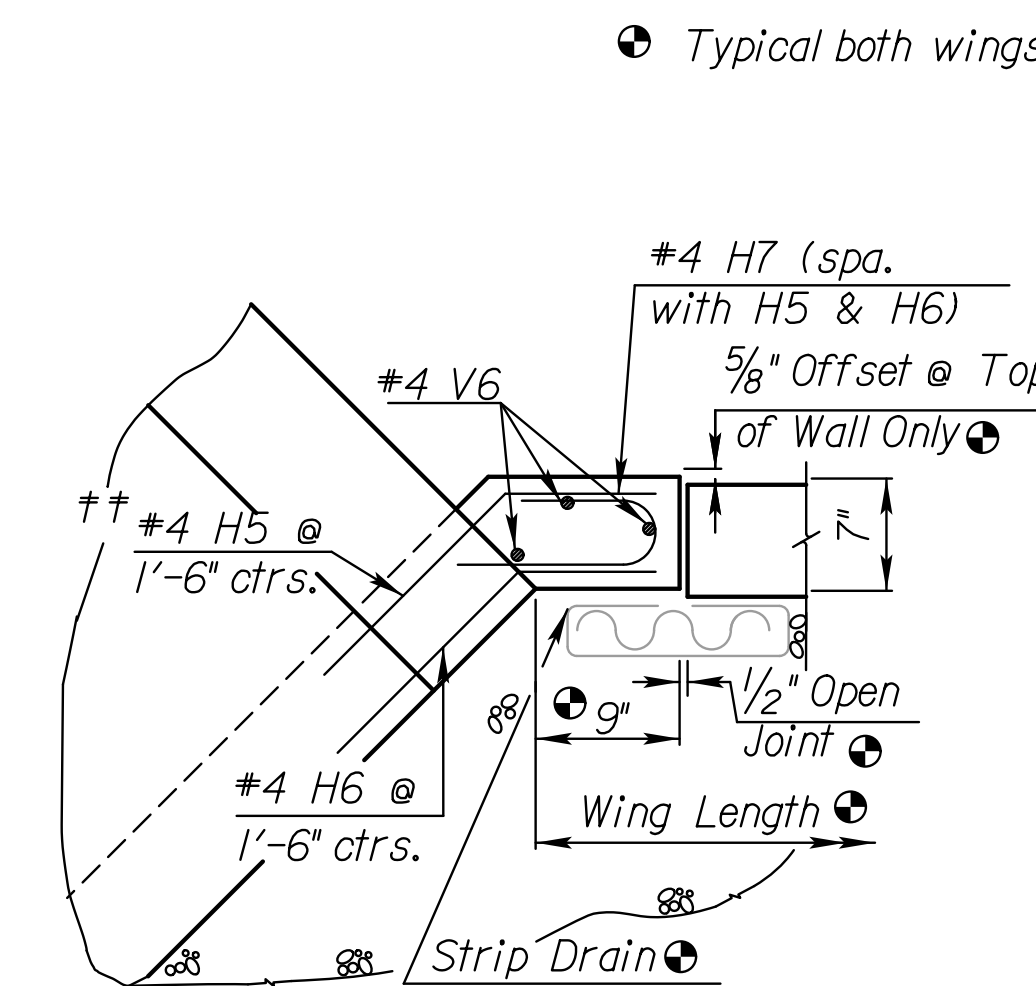


ELEVATION OF WINGWALL
(Backface Shown)



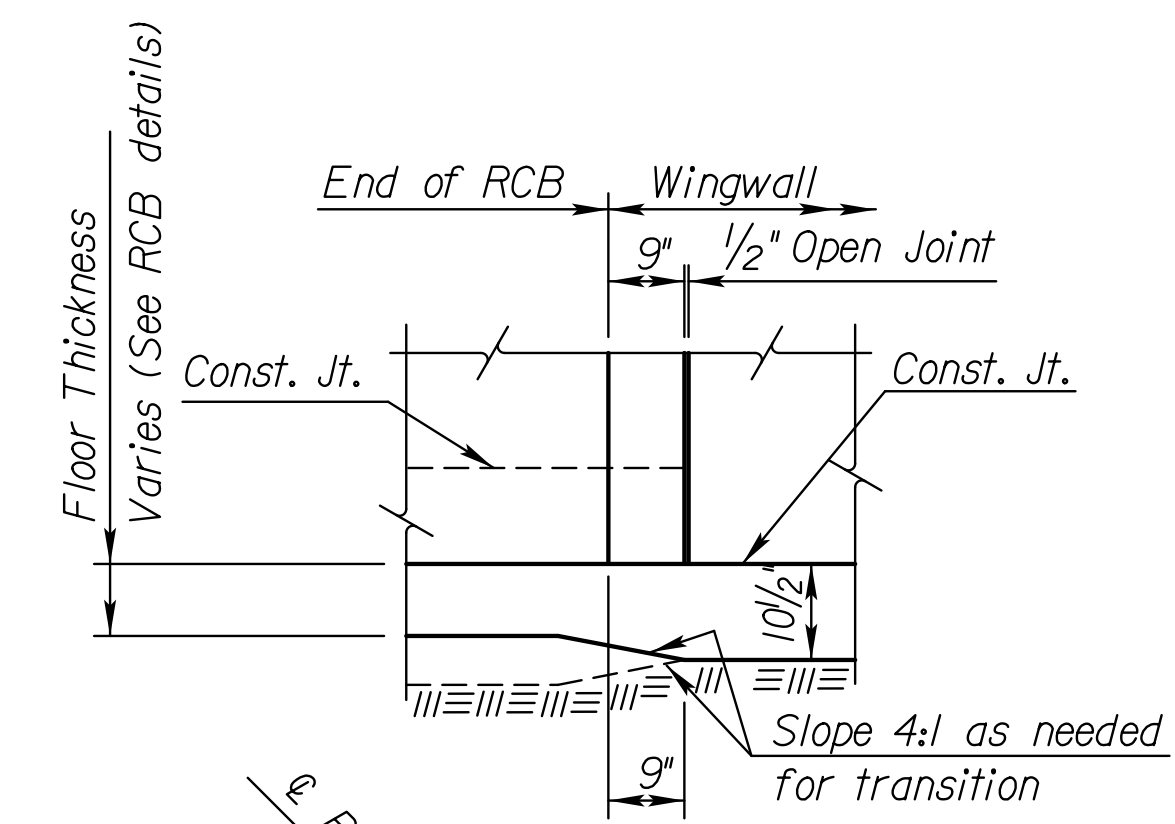
SECTION A-A

See "RCB Aux. Details" sheet for additional requirements.

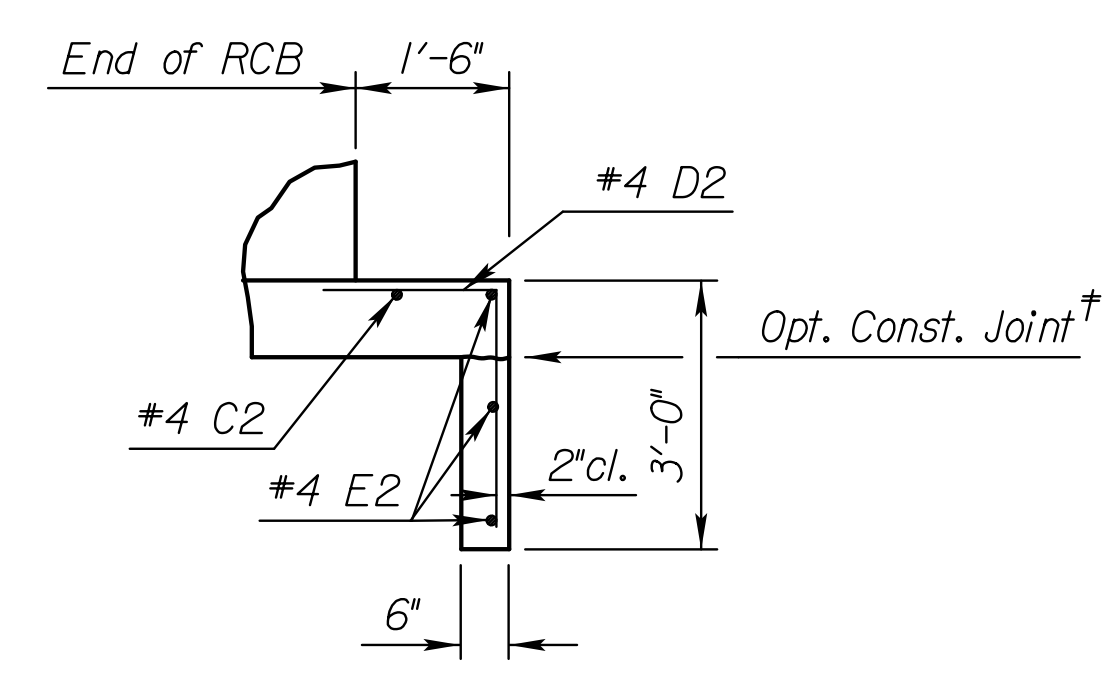


WINGWALL JOINT DETAIL
(Plan View)

† NOTE: Const. Jt. may be used at Contractor's option when approved by the Engineer. DI bars or mesh may be spliced thus: Minimum overlap shall be 1'-3". No increase in quantities or cost shall be allowed when Contractor elects this option.

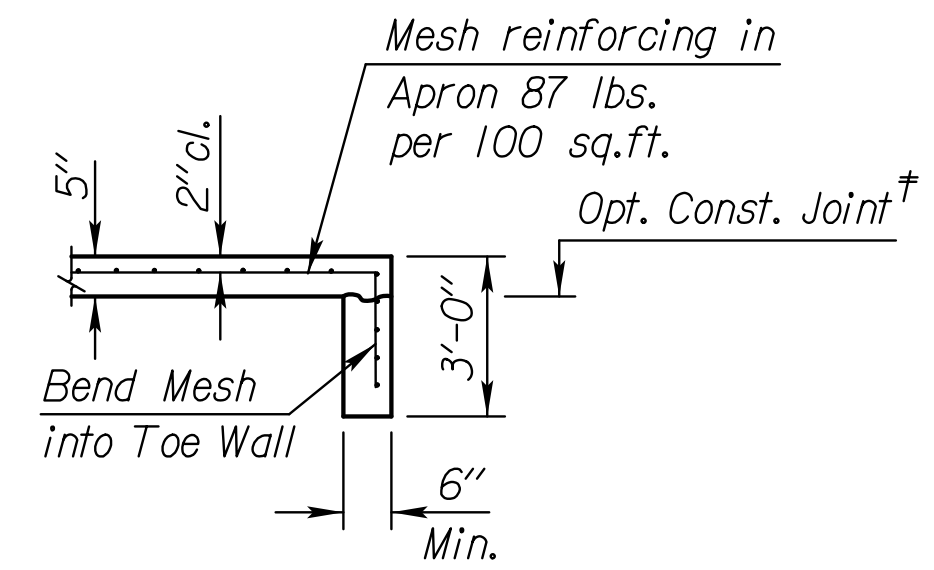


VIEW D-D

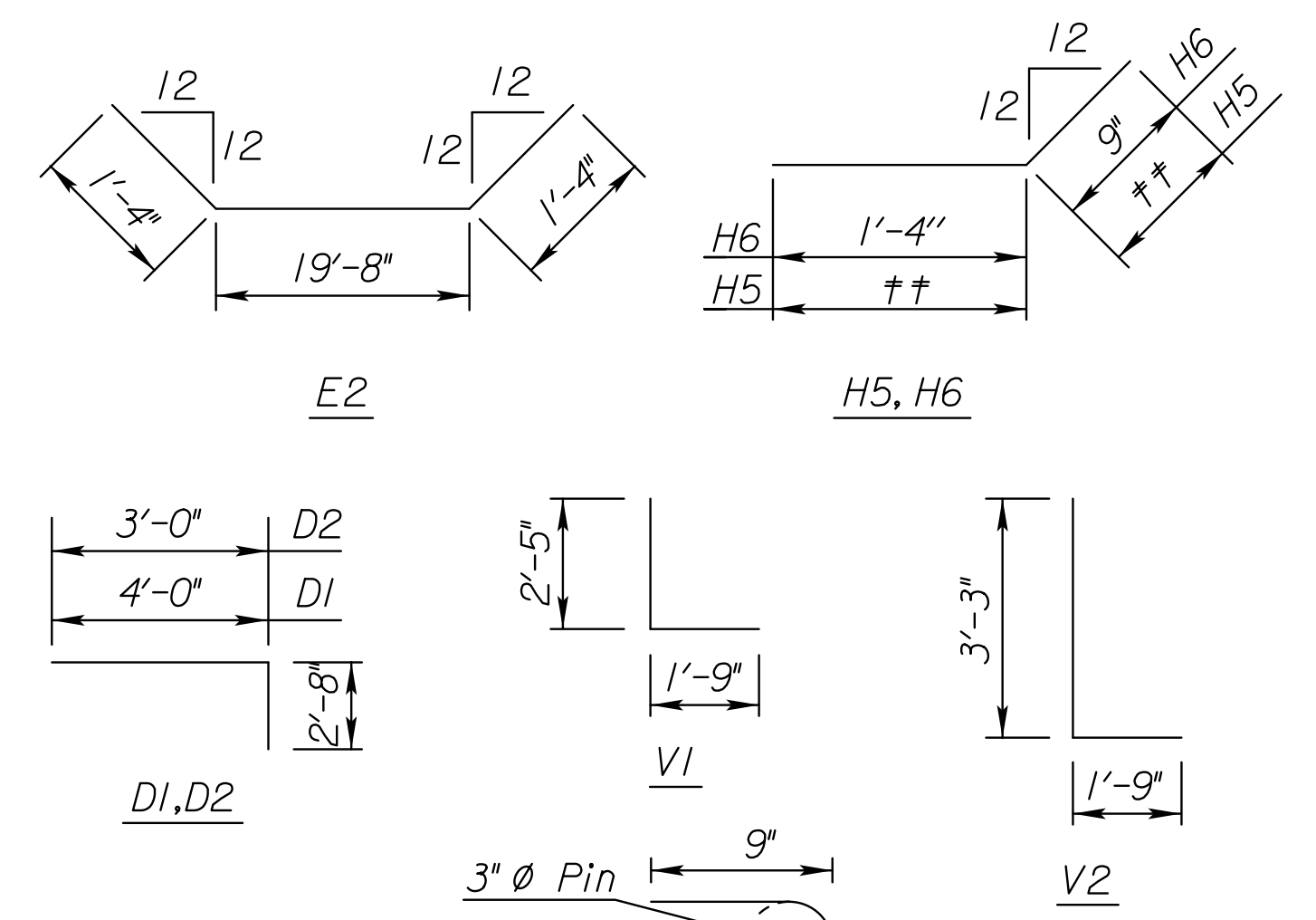


SECTION E-E

NOTE:
EF = Each Face
NS = Near Side
FS = Far Side
CJ = Const. Joint



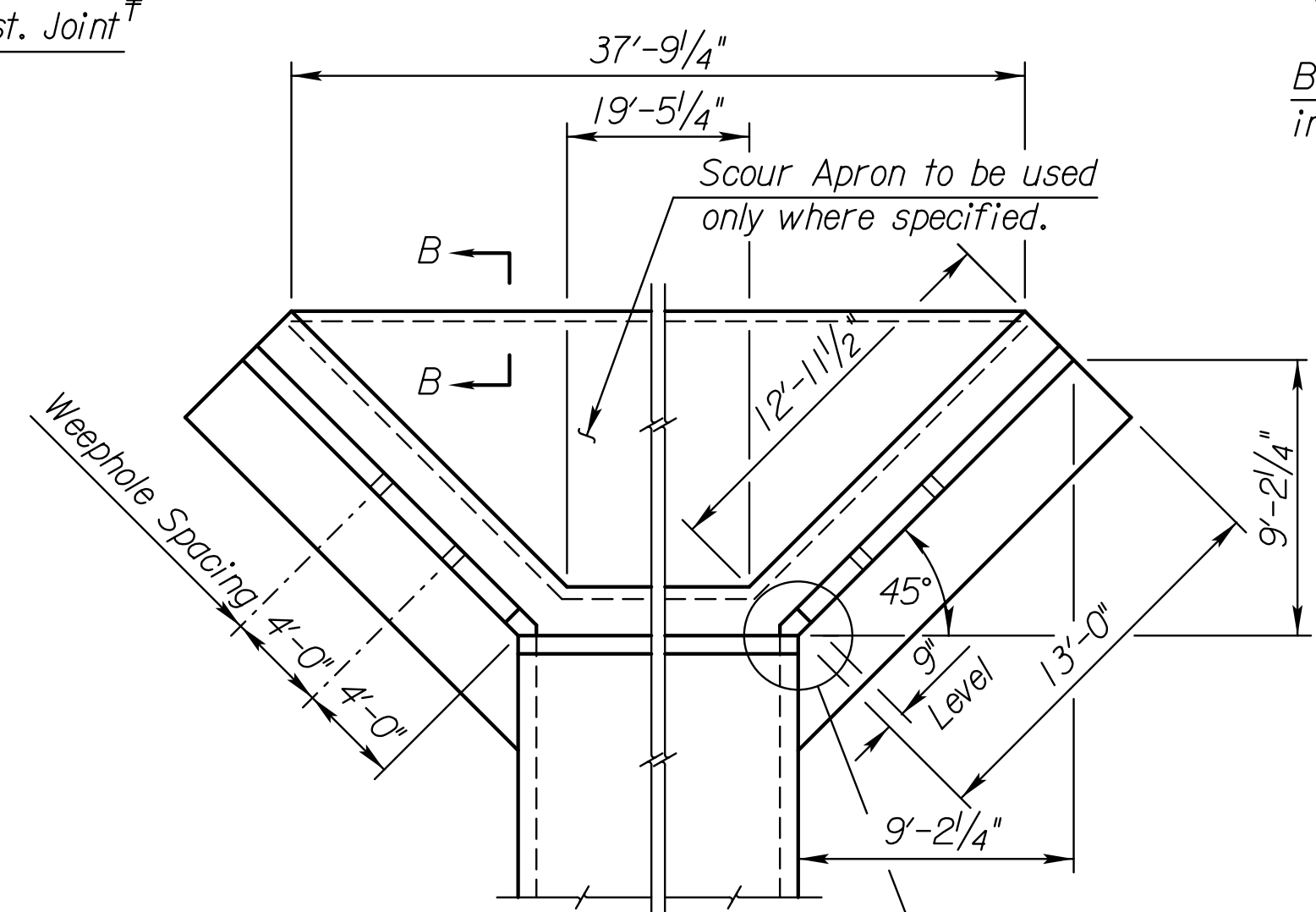
SECTION B-B



BENDING DIAGRAM

(All dimensions are out to out of bars.)

†† Bend in Field



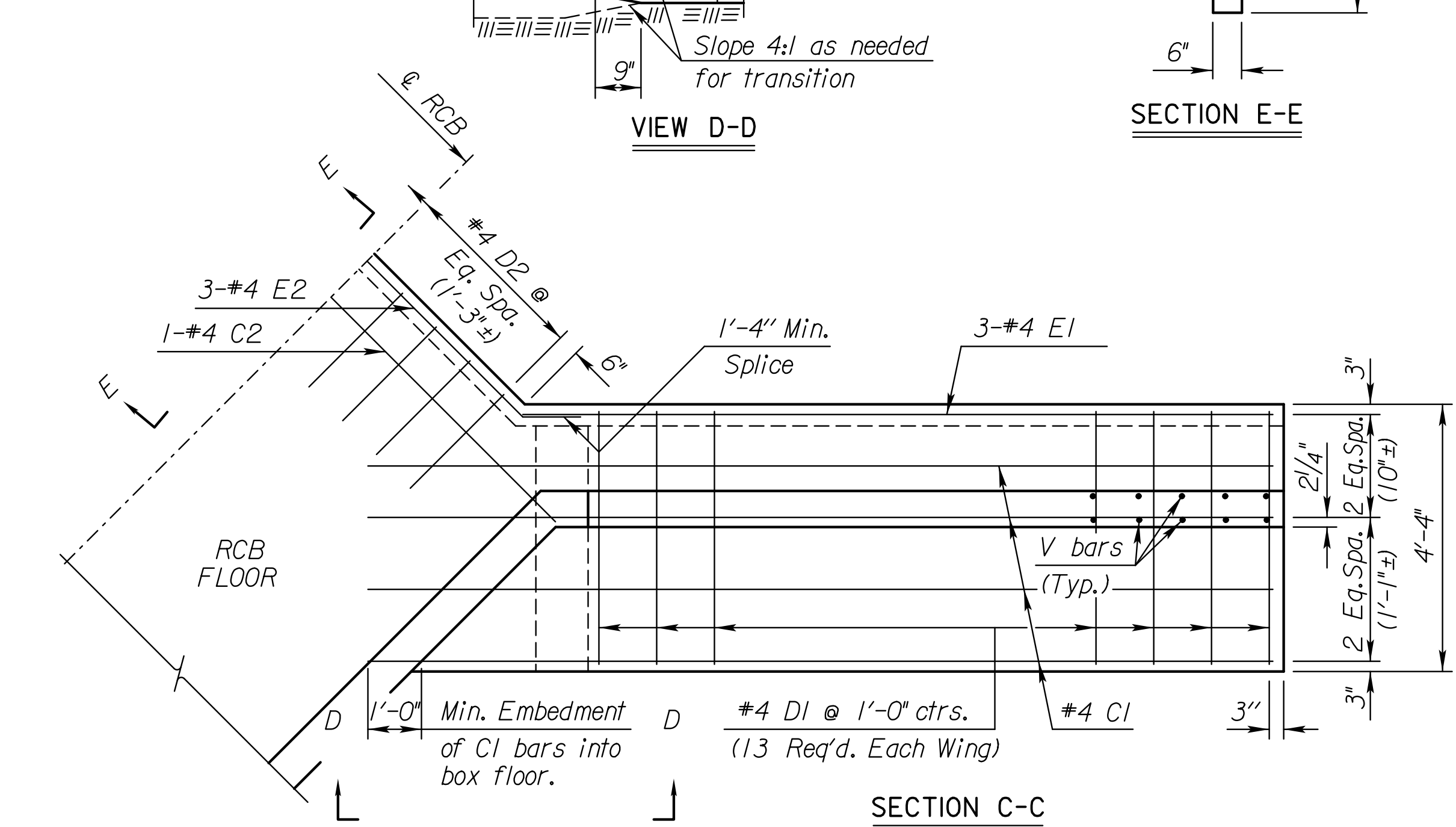
WING DIMENSIONS FOR NORMAL BOX
(3/2:1 Embankment Slope)

NOTE: Space weepholes to clear reinforcing steel. See "RCB Aux. Details" sheet for additional weephole details.

Quantities listed below are included in the Summary of Quantities shown on the RCB details.

	WINGWALL QUANTITIES (Left End Only)	
	Foundation Stabilization	Concrete (Gr. 4.0)
Wingwalls	3.11 (C.Y.)	10.14 (C.Y.)
Apron	---	---
Soil Saver	3.81 (C.Y.)	6.48 (C.Y.)
Reinforcing Steel (Gr. 60)	1010 Lbs.	
Welded Wire Fabric (Wings)	98 Lbs.	
Welded Wire Fabric (Soil Saver)	70 Lbs.	
Granular Backfill (Wingwalls)	22.00 C.Y.	
Filter Fabric (subsidiary)	36.00 S.Y.	
	WINGWALL QUANTITIES (Right End Only)	
	Foundation Stabilization	Concrete (Gr. 4.0)
Wingwalls	3.11 (C.Y.)	10.14 (C.Y.)
Apron	4.51 (C.Y.)	5.83 (C.Y.)
Soil Saver	---	---
Reinforcing Steel (Gr. 60)	1010 Lbs.	
Welded Wire Fabric (Wings)	98 Lbs.	
Welded Wire Fabric (Apron)	327 Lbs.	
Granular Backfill (Wingwalls)	22.00 C.Y.	
Filter Fabric (subsidiary)	36.00 S.Y.	

V3,V4 Var. 4'-5" to 7'-0" by equal increments (4"±) 2 Req'd. each length



SECTION C-C
(Plan of Footing)

NOTE: Reinforcing Bar List is for both wings at one end of box only.

0° Skew	Mark	* See Bending Diagram																	
		#4C1	#4D1	#4E1	#4C2	#4D2	#4E2	#6V1	#4V2	#6V3	#4H1	#4H2	#4H3	#4H5	#4H6	#4H7	#4V4	#4V5	#4V6
		Number	8	26*	6	1	16*	3*	18*	16*	18	12	4	4	10*	10*	10*	18	18
Length	15'-10"	6'-8"	12'-10"	22'-0"	5'-8"	22'-4"	4'-2"	5'-0"	*	11'-10"	9'-3"	13'-0"	1'-10"	2'-1"	1'-11"	*	2'-2"	7'-0"	

3				
2				
1				
NO.	DATE	REVISIONS	BY	APP'D
KANSAS DEPARTMENT OF TRANSPORTATION				
Br. No. 530400876787045 Sta. 220+25.08				
FLARED WINGWALLS 6 ft Rise (0*SKREW)				
BR-10.00.06		Sedgwick Co.		
DESIGNED	DATE	QUANTITIES	CADD	
DESIGN CK.	DETAIL CK.	QUAN. CK.	CADD CK.	

Plotted By: mib
 File: I:\2010\0281\Bridges\LRFD_Boxes\2013-04-16_10281_2-10x6(Wing).dgn
 Plot Date: 18-APR-2013 16:17