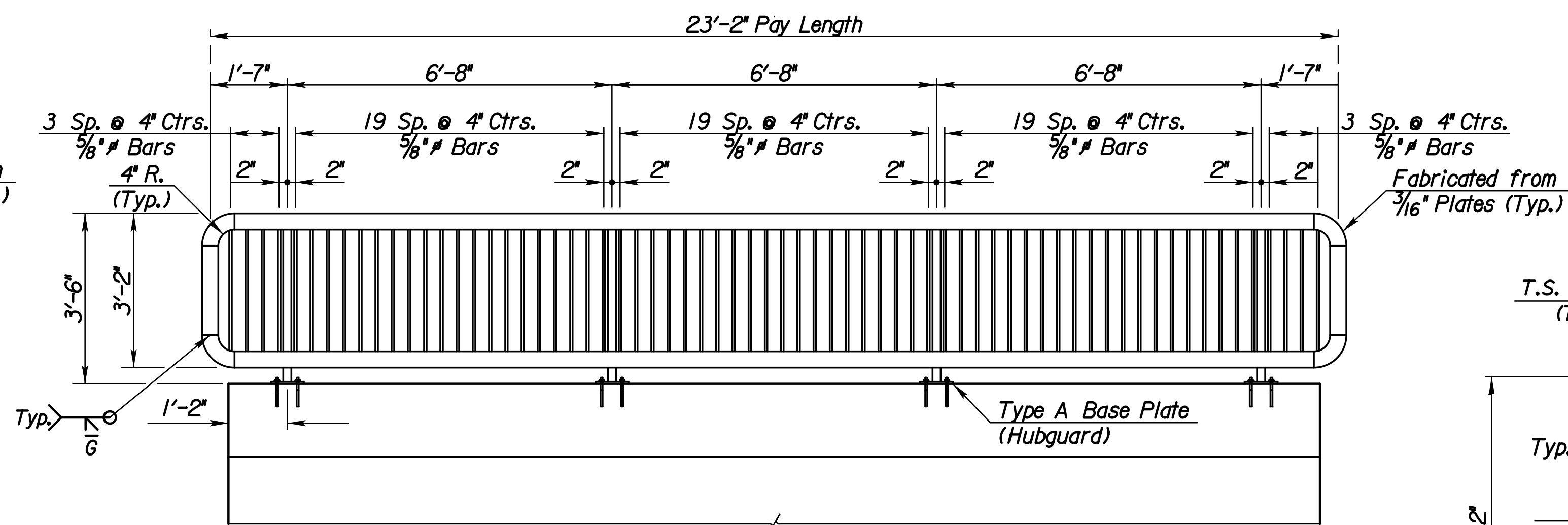
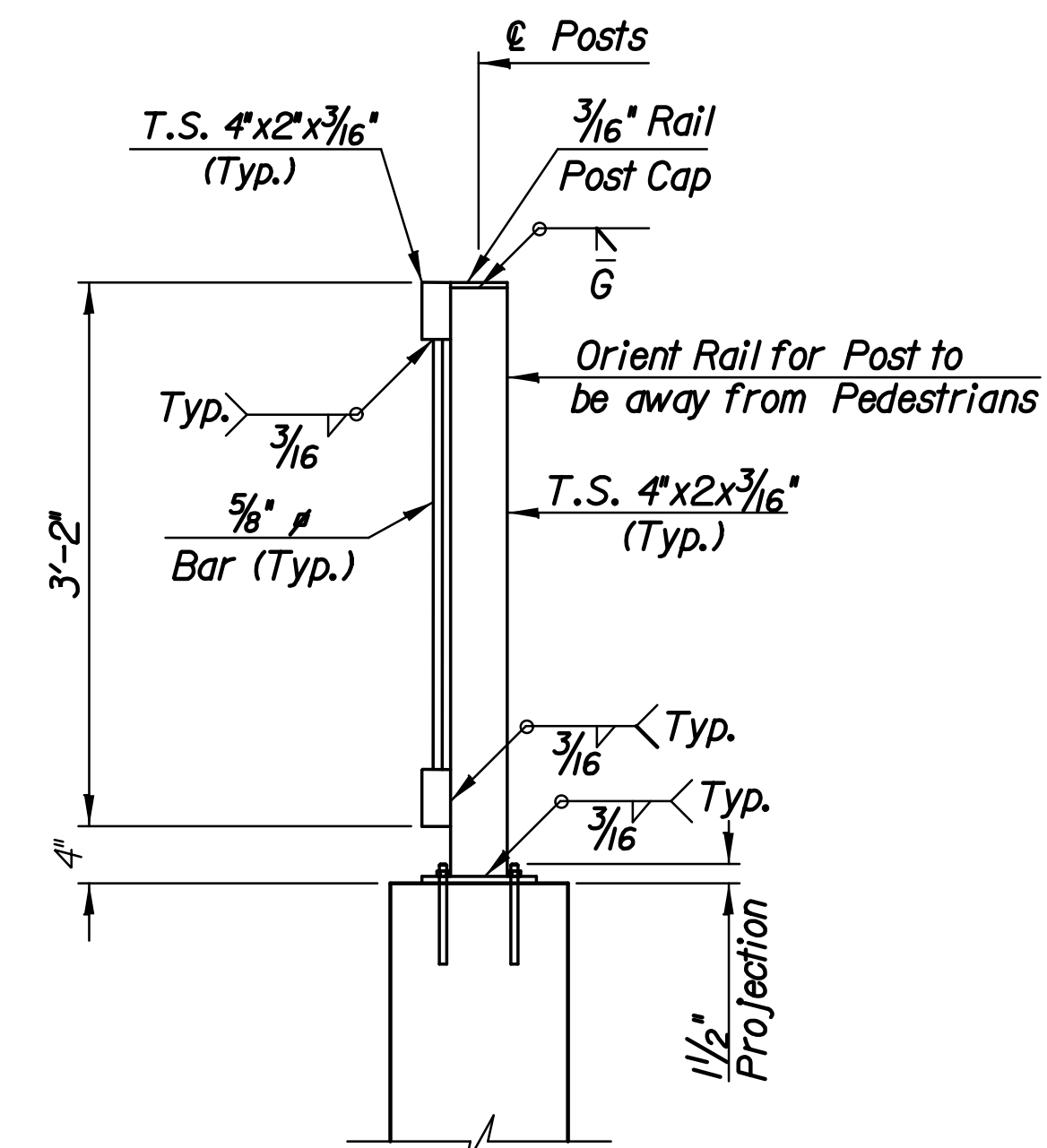


**RAIL ELEVATION
AT TYPICAL WING**
(4 Required)

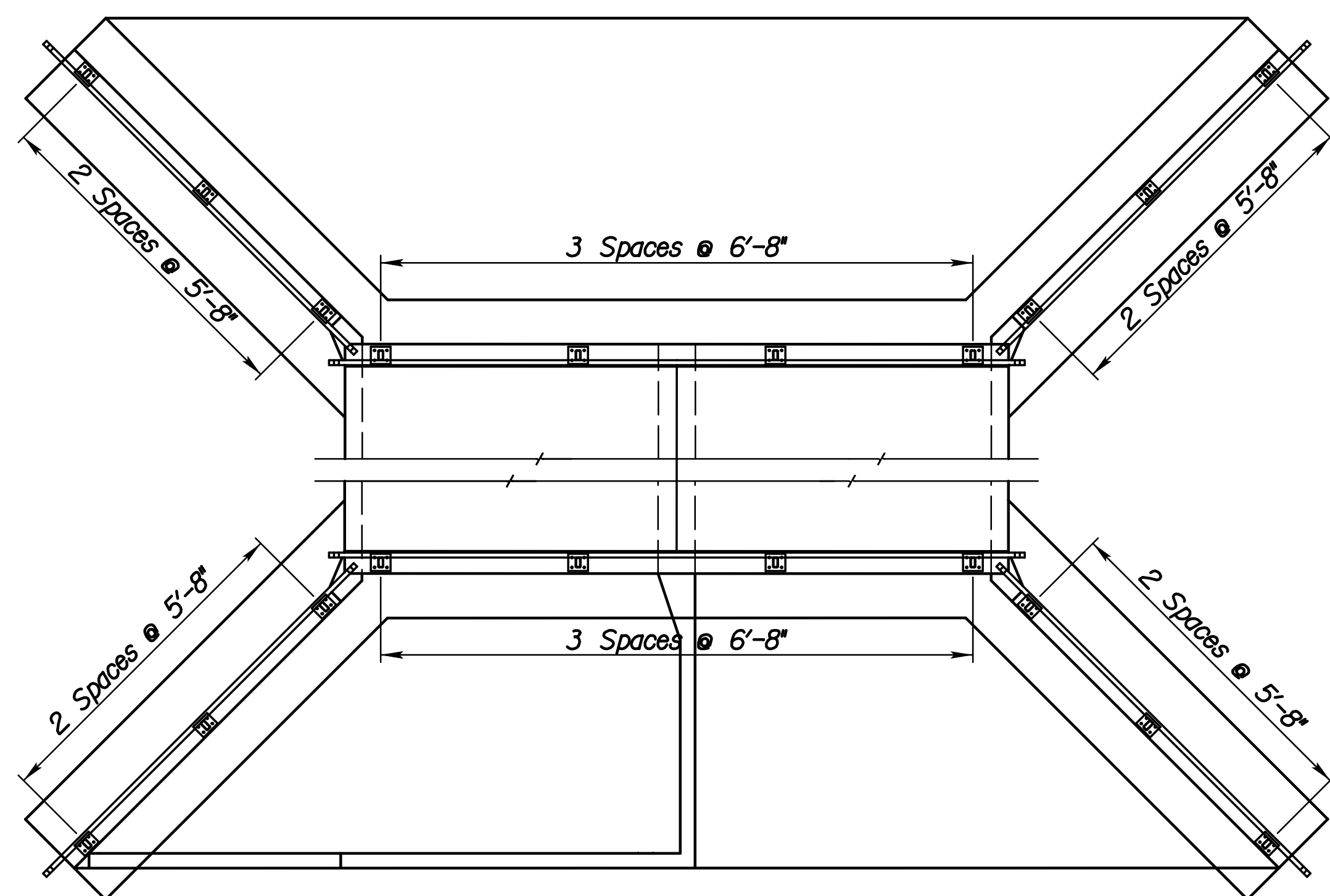


**RAIL ELEVATION
AT HUBGAUD**
(2 Required)



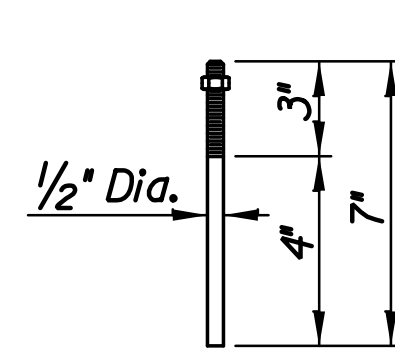
TYPICAL POST
Center Posts on Hubguard or Wingwall

| BILL OF MATERIALS | | |
|------------------------|----------|----------|
| Item | Quantity | Unit |
| 3'-6" Rail | 104'-4" | Lin. Ft. |
| * Type A Base Plate | 8 | Each |
| * Type B Base Plate | 12 | Each |
| * For Information Only | | |



PEDESTRIAN RAIL LAYOUT

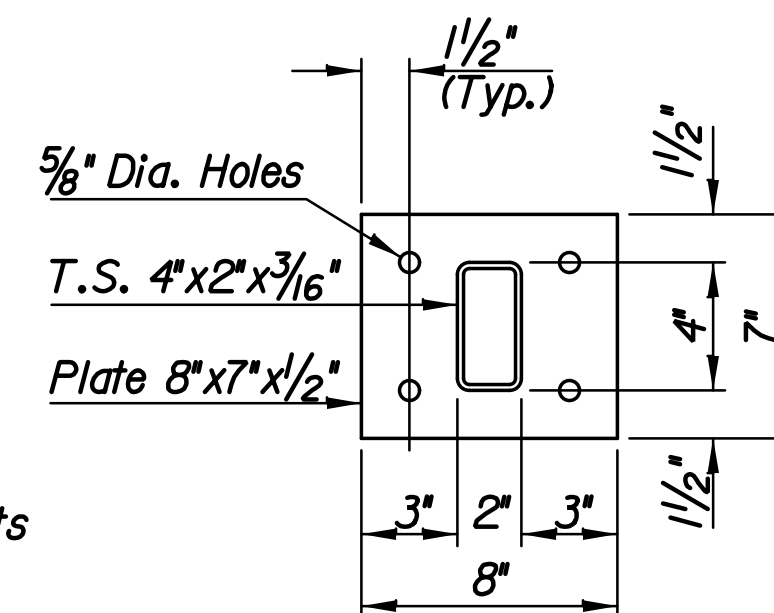
Scale: 1" = 4'



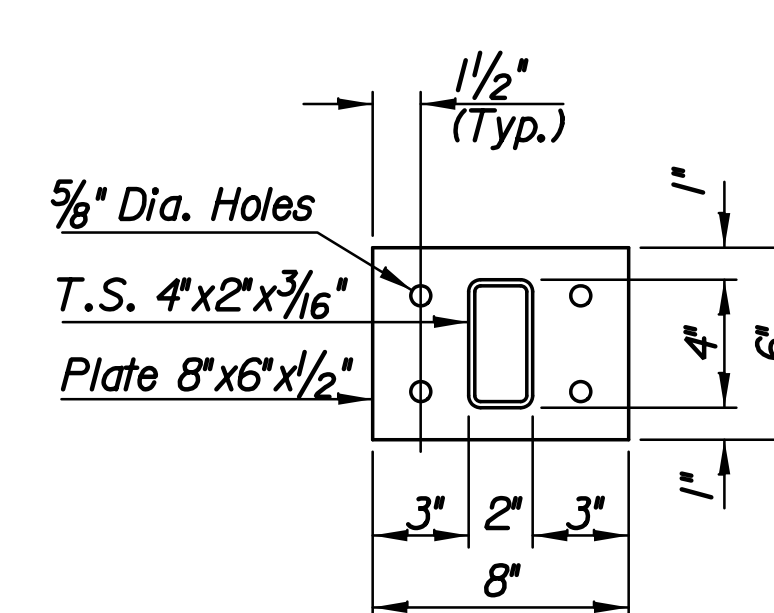
Galvanized (ASTM A153)

(May substitute expandable anchor bolts when approved by the Engineer)

ANCHOR BOLT



TYPE A BASE PLATE
(8 Required)



TYPE B BASE PLATE
(12 Required)

GENERAL NOTES

The horizontal members of the Rail and Posts shall be hollow structural tubing. All structural steel tubing shall comply to A.S.T.M. designation A36 or A500 Grade B respectively. Rail shall be fabricated in lengths as shown from joint to joint and joint to end. Post and Bars shall be set vertical and shimmed if required. Prior to painting abrasive blast to commercial finish SSPC-SP6 to obtain a surface profile of 1-1/2 Mils. The shop and field coats applied to structural steel shall conform to an inorganic Zinc Primer with water-borne Acrylic finish coat. (The finish coat shall match Carbolite #C900, Ebony Black). Provide a color sample to the Engineer with shop drawing submittal. Material and construction shall conform to the structural welding code A.W.S. D1.1-01. Shop details must be submitted and approved by the Engineer.

Plotted By: mlb
 Date: 4/18/2013 4:10:13 PM
 FILE: I:\2010\10281\Bridg\LRFD Boxes\10281-2-10x6-Handr-all.dgn

| | | | |
|---|----------|---------|--------------|
| No. | Revision | By | Date |
| 135TH ST. | | | |
| PEDESTRIAN RAIL DETAILS | | | |
| STA. 220+25.08 | | | |
| GARY JANZEN, P.E.—CITY ENGINEER | | | |
| CITY OF WICHITA PROJECT NO. 472-84915 | | | |
| PEC PROFESSIONAL ENGINEERING CONSULTANTS, P.A. | | | |
| 303 SOUTH TOPEKA WICHITA, KS 67202 | | | |
| 316-262-2691 www.pec1.com | | | |
| Designed by | KJW | Job No. | 10281 |
| Drawn by | KJW | Date | JAN. 2013 |
| | | | Sh. 34 of 83 |