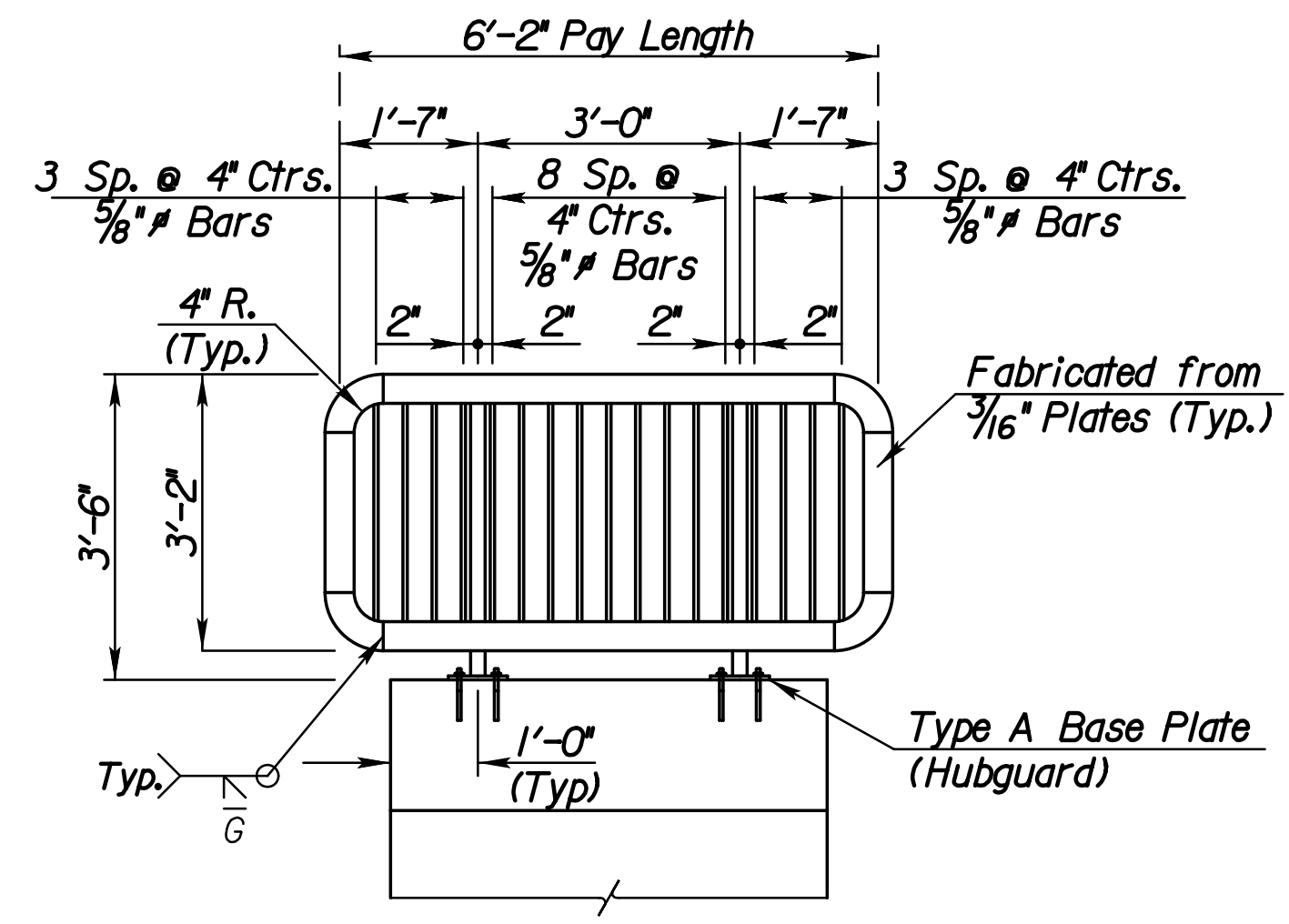
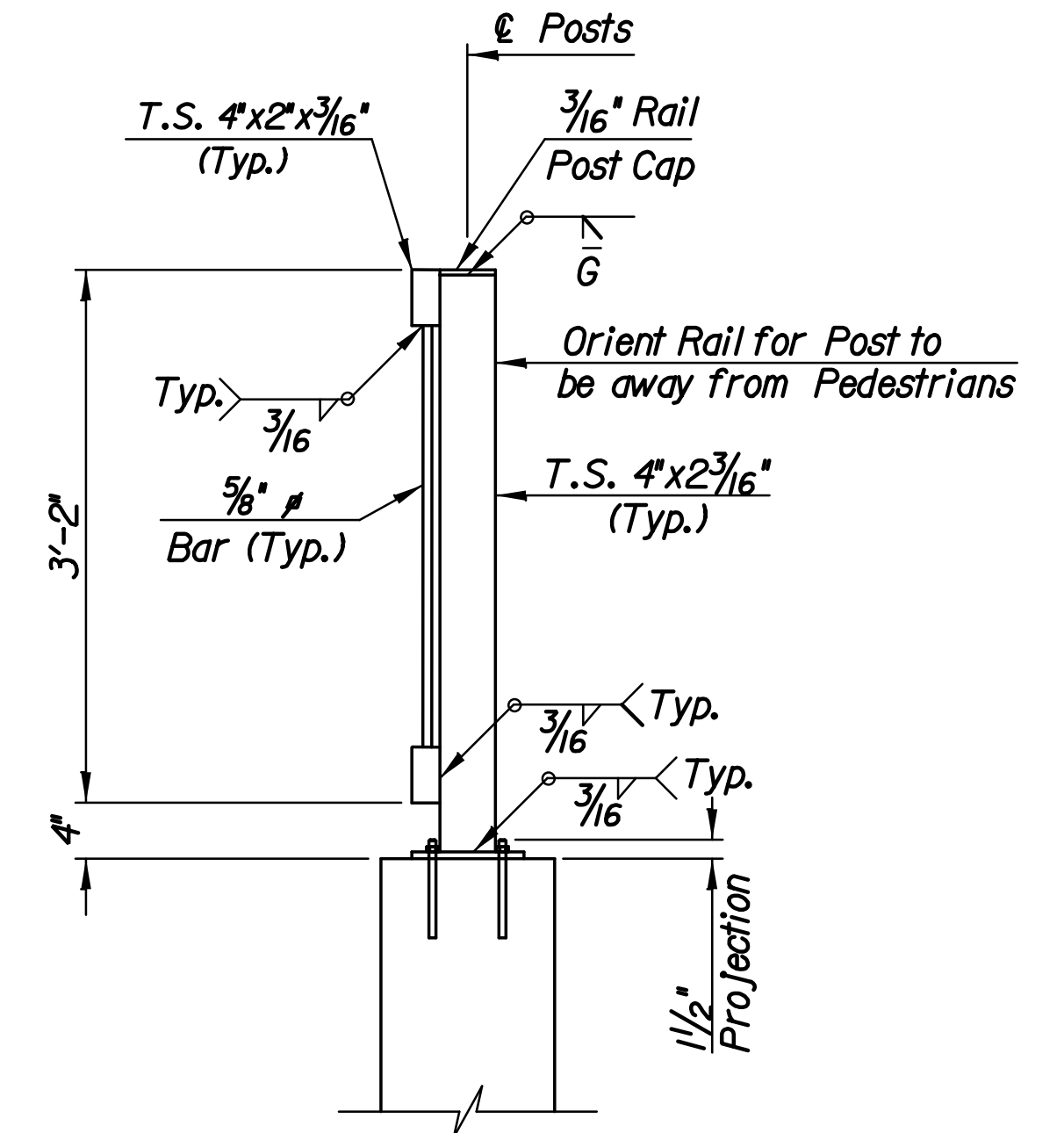


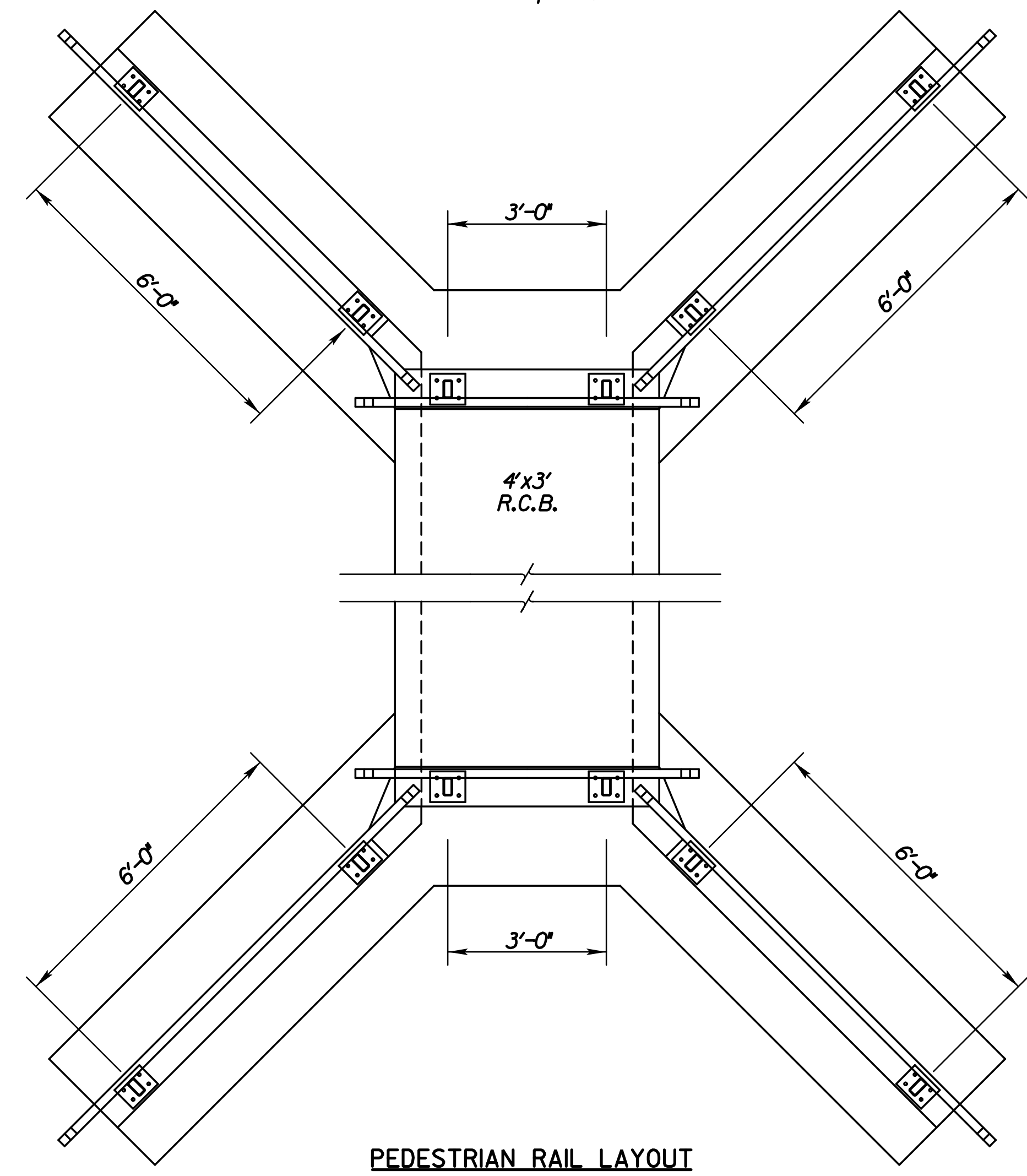
**RAIL ELEVATION
AT TYPICAL WING
(4 Required)**



**RAIL ELEVATION
AT HUBGAURD 4X3' RCB
(2 Required)**



**TYPICAL POST
Center Posts on Hubguard or Wingwall**



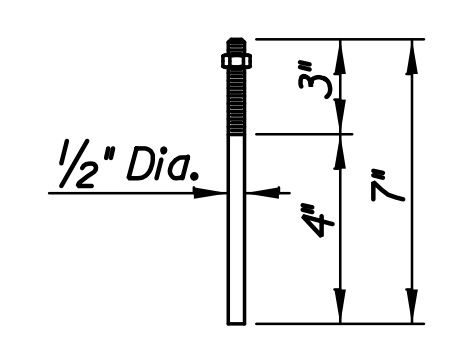
PEDESTRIAN RAIL LAYOUT

Scale: 1" = 4'

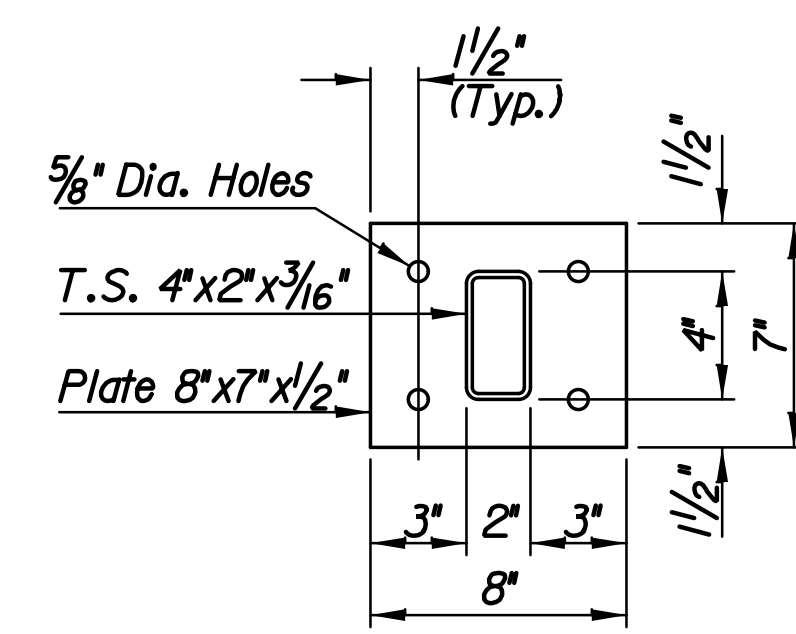
BILL OF MATERIALS		
Item	Quantity	Unit
3'-6" Rail	49'-0"	Lin. Ft.
* Type A Base Plate	4	Each
* Type B Base Plate	8	Each
* For Information Only		

GENERAL NOTES

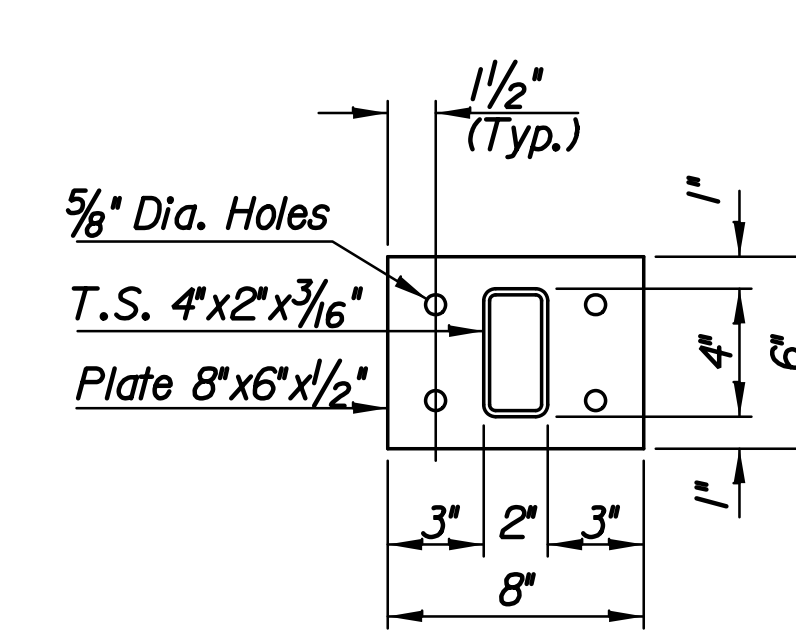
The horizontal members of the Rail and Posts shall be hollow structural tubing. All structural steel tubing shall comply to A.S.T.M. designation A36 or A500 Grade B respectively. Rail shall be fabricated in lengths as shown from joint to joint and joint to end. Post and Bars shall be set vertical and shimmed if required. Prior to painting abrasive blast to commercial finish SSPC-SP6 to obtain a surface profile of 1-1/2 Mils. The shop and field coats applied to structural steel shall conform to an inorganic Zinc Primer with water-borne Acrylic finish coat. (The finish coat shall match Carbolite #C900, Ebony Black). Provide a color sample to the Engineer with shop drawing submittal. Material and construction shall conform to the structural welding code A.W.S. D1.1-01. Shop details must be submitted and approved by the Engineer.



ANCHOR BOLT
(May substitute expandable anchor bolts when approved by the Engineer)



**TYPE A BASE PLATE
(4 Required)**



**TYPE B BASE PLATE
(8 Required)**

No.	Revision	By	Date
135TH ST.			
PEDESTRIAN RAIL DETAILS			
STA. 226+05.00			
GARY JANZEN, P.E.-CITY ENGINEER			
CITY OF WICHITA PROJECT NO. 472-84915			
PEC PROFESSIONAL ENGINEERING CONSULTANTS, P.A.			
303 SOUTH TOPEKA WICHITA, KS 67202			
316-262-2691 www.pec1.com			
Designed by	KJW	Job No.	10281
Drawn by	KJW	Date	JAN. 2013
			Sh. 38 of 83