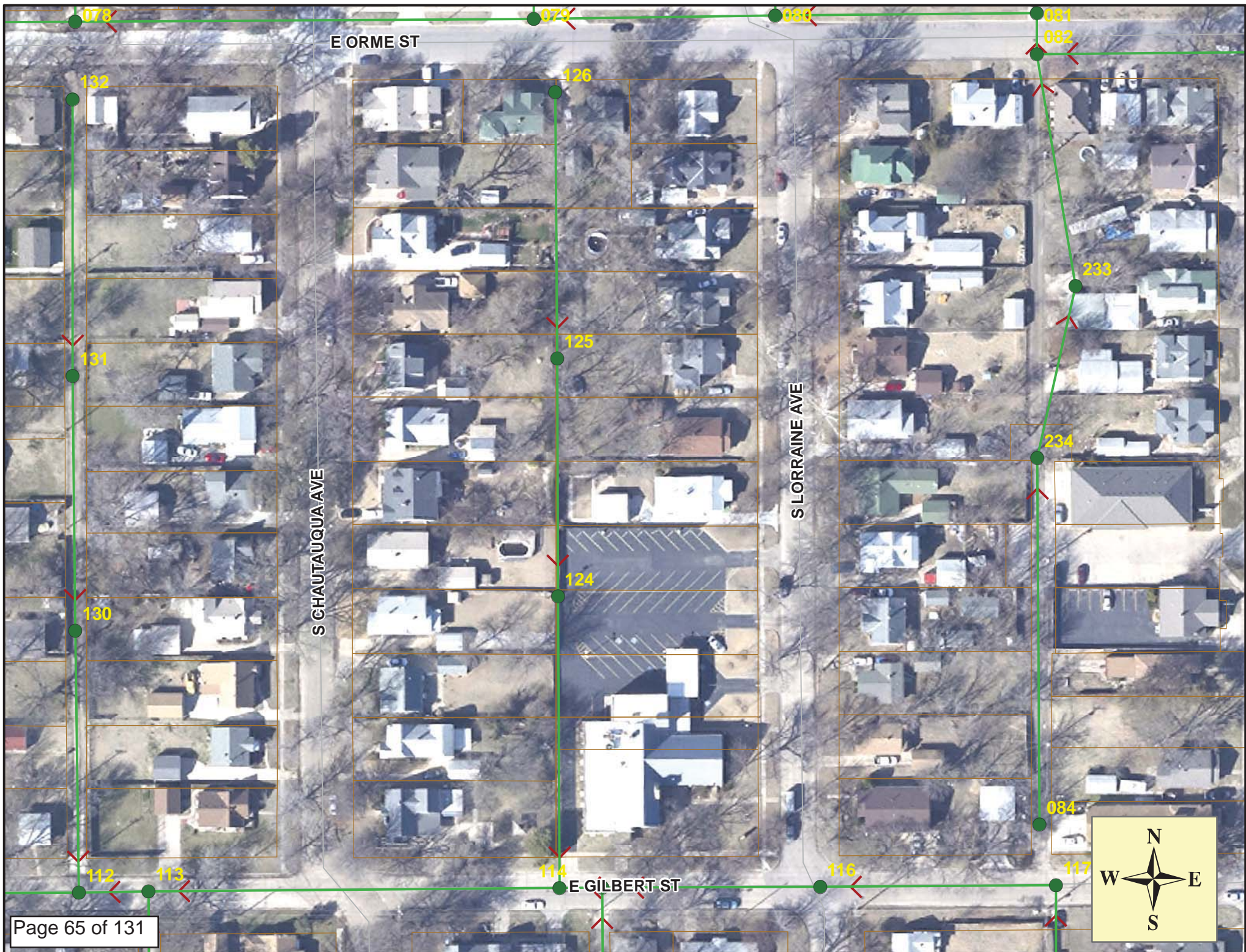


SITE 9



Video Inspection Master Report

5/17/2013

9:54 AM

US Structure: 5646-126 **3015 E ORME ST** **Date Insp:** 11/3/2011 **Basin:** EC01F
DS Structure: 5646-125 **621 S LORRAINE ST** **Dir Televised:** Upstream To Downstream

Pipe Information

Shape: Round	Length Status:	Project No. : C-021
Dia/Ht: 8	Material: VCP	
Length: 210.0	Slope: 0.152	

Obs. #	VTR Counter	Distance	Location	Description	Rating	Obsrvd (gpm)	Ratings			Remain (gpm)
							Est. (gpm)	Struct	Clean	
1		0.0	5646-126	US Manhole	1	0.000	0	0	0.000	
2		16.5		Sealed Off Wye	1	0.000	0	0	0.000	
3		18.8	3015 E ORME	Wye Service	5	0.000	400	0	0.000	
				(connection repaired by Sewer Maintenance since this televising)						
5		19.8		Crack-Radial	3	0.004	5	0	0.004	
6		31.2	3019 E ORME	Break-In Conn	5	0.010	400	0	0.010	
				(connection repaired by Sewer Maintenance since this televising)						
7		34.2	602 S CHAURAUQUA	Break-In Conn	5	0.010	400	0	0.010	
				(connection repaired by Sewer Maintenance since this televising)(main is 7.5' deep)						
8		37.5		Roots	2	0.004	2	4	0.004	
9		39.8		Roots	2	0.004	2	4	0.004	
10		40.4	604 S CHUAUTAUQUA	Break-In Conn / roots	5	0.010	400	0	0.010	
11		41.6		Sealed Off Wye	1	0.000	0	0	0.000	
12		42.5		Roots	2	0.004	2	4	0.004	
13		43.8		Sealed Off Wye	1	0.000	0	0	0.000	
14		45.2		Roots	2	0.004	2	4	0.004	
15		47.5		Broken Pipe	4	0.030	78	0	0.030	
16		48.7	607 S LORRAINE	Break-In Conn / roots	5	0.010	400	0	0.010	
17		52.5		Roots	1	0.002	1	1	0.002	
18		66.9		Sealed Off Wye	1	0.000	0	0	0.000	
19		67.4		Roots	2	0.004	2	4	0.004	
20		68.5	616 S CHAUTAUQUA	Wye Service / roots	5	0.000	400	0	0.000	
21		76.7	611 S LORRAINE	Break-In Conn / roots	4	0.008	60	0	0.008	
22		80.4		Crack-Radial	2	0.002	2	0	0.002	
23		92.2		Sealed Off Wye	1	0.000	0	0	0.000	
24		94.6		Sealed Off Wye	1	0.000	0	0	0.000	
25		95.3		Crack-Radial	2	0.002	2	0	0.002	
26		100.4		Crack-Radial	4	0.008	10	0	0.008	
27		102.8		Crack-Radial	3	0.004	5	0	0.004	
28		105.7		Crack-Radial	3	0.004	5	0	0.004	
29		115.9		Sealed Off Wye	1	0.000	0	0	0.000	
30		118.4	615 S LORRAINE	Break-In Conn	4	0.008	60	0	0.008	
				(connection repaired by Sewer Maintenance since this televising)						

Video Inspection Master Report

5/17/2013

9:54 AM

US Structure: 5646-126 3015 E ORME ST Date Insp: 11/3/2011 Basin: EC01F
 DS Structure: 5646-125 621 S LORRAINE ST Dir Televised: Upstream To Downstream

31	119.8	618 S CHAUTAUQUA	Wye Service	3	0.000	2	0	0.000
		(connection repaired by Sewer Maintenance since this televising)						
32	128.3		Crack-Radial	2	0.002	2	0	0.002
33	130.5		Crack-Radial	3	0.004	5	0	0.004
34	135.9		Crack-Radial	1	0.001	1	0	0.001
35	142.4		Sealed Off Wye	1	0.000	0	0	0.000
36	144.8		Sealed Off Wye	1	0.000	0	0	0.000
37	153.4		Crack-Radial	3	0.004	5	0	0.004
38	155.9		Crack-Radial	1	0.001	1	0	0.001
39	158.4		Crack-Radial	3	0.004	5	0	0.004
40	161.1		Crack-Radial	3	0.004	5	0	0.004
41	163.4		Crack-Radial	2	0.002	2	0	0.002
42	165.9		Crack-Radial	2	0.002	2	0	0.002
43	167.7		Sealed Off Wye	1	0.000	0	0	0.000
44	168.5		Crack-Radial	3	0.004	5	0	0.004
45	170.1		Sealed Off Wye	1	0.000	0	0	0.000
46	176.2		Crack-Radial	2	0.002	2	0	0.002
47	178.6		Crack-Radial	2	0.002	2	0	0.002
48	183.6		Crack-Radial	3	0.004	5	0	0.004
49	193.0	621 S LORRAINE	Wye Service / roots	5	0.000	400	0	0.000
50	194.8	622 S CHAUTAUQUA	Wye Service / roots	5	0.000	400	0	0.000
51	198.6		Crack-Radial	3	0.004	5	0	0.004
52	201.2		Crack-Radial	3	0.004	5	0	0.004
53	203.9		Crack-Radial	3	0.004	5	0	0.004
54	209.0	5646-125	DS Manhole	1	0.000	0	0	0.000

Video Inspection Master Report

5/17/2013

9:54 AM

US Structure: 5646-125 **621 S LORRAINE ST** **Date Insp:** 11/7/2011 **Basin:** EC01F
DS Structure: 5646-124 **655 S LORRAINE ST** **Dir Televised:** Upstream To Downstream

Pipe Information

Shape: Round	Length Status:	Project No. : C-021
Dia/Ht: 8	Material: VCP	Index:
Length: 203.5	Slope: 0.147	Surface:

Obs. #	VTR Counter	Distance	Location	Description	Rating	Obsrvd (gpm)	Ratings			Remain (gpm)
							Est. (gpm)	Struct	Clean	
1		0.0	5646-125	US Manhole	1		0.000	0	0	0.000
2		7.1	621 S LORRAINE	Break-In Conn	2		0.002	0	0	0.002
3		9.3		Crack-Radial	4		0.008	10	0	0.008
4		10.5	622 S CHAUTAUQUA	Wye Service	5		0.000	400	0	0.000
(connection repaired by Sewer Maintenance since this televising)(8.6' deep)										
6		11.9		Crack-Radial	4		0.008	10	0	0.008
7		16.8		Crack-Radial	4		0.008	10	0	0.008
8		19.3		Crack-Radial	3		0.004	5	0	0.004
9		21.9		Crack-Radial	3		0.004	5	0	0.004
10		27.0		Crack-Radial	3		0.004	5	0	0.004
11		31.9		Crack-Radial	3		0.004	5	0	0.004
12		33.6		Sealed Off Wye	1		0.000	0	0	0.000
13		34.3		Crack-Radial	3		0.004	5	0	0.004
14		35.8		Sealed Off Wye	1		0.000	0	0	0.000
15		36.8		Crack-Radial	2		0.002	2	0	0.002
16		39.5		Crack-Radial	2		0.002	2	0	0.002
17		44.5		Crack-Radial	2		0.002	2	0	0.002
18		47.0		Crack-Radial	3		0.004	5	0	0.004
19		57.9	627 S LORRAINE	Wye Service / roots	5		0.000	400	0	0.000
20		60.4		Sealed Off Wye	1		0.000	0	0	0.000
21		64.6	628 S CHAUTAUQUA	Break-In Conn	3		0.004	2	0	0.004
(connection repaired by Sewer Maintenance since this televising)										
22		72.1		Crack-Radial	3		0.004	5	0	0.004
23		83.2		Sealed Off Wye	1		0.000	0	0	0.000
24		85.1		Sealed Off Wye	1		0.000	0	0	0.000
25		94.9		Crack-Radial	2		0.002	2	0	0.002
26		100.0		Crack-Radial	3		0.004	5	0	0.004
27		109.4	633 S LORRAINE	Wye Service	1		0.000	0	0	0.000
28		110.3	634 S CHAUTAUQUA	Break-In Conn	2		0.002	0	0	0.002
(connection repaired by Sewer Maintenance since this televising)										
29		112.7		Crack-Radial	3		0.004	5	0	0.004
30		115.2		Crack-Radial	3		0.004	5	0	0.004

Video Inspection Master Report

5/17/2013

9:54 AM

US Structure: 5646-125 621 S LORRAINE ST Date Insp: 11/7/2011 Basin: EC01F
 DS Structure: 5646-124 655 S LORRAINE ST Dir Televised: Upstream To Downstream

31	117.7		Crack-Radial	3	0.004	5	0	0.004
32	122.9		Crack-Radial	3	0.004	5	0	0.004
33	134.4		Sealed Off Wye	1	0.000	0	0	0.000
34	135.9		Crack-Radial	2	0.002	2	0	0.002
35	136.6	638 S CHAUTAUQUA	Wye Service	1	0.000	0	0	0.000
36	137.9		Crack-Radial	3	0.004	5	0	0.004
37	148.0		Crack-Radial	2	0.002	2	0	0.002
38	158.5		Sealed Off Wye	1	0.000	0	0	0.000
39	161.6		Sealed Off Wye	1	0.000	0	0	0.000
40	183.8		Break-In Conn	1	0.001	0	0	0.001
41	185.8		Crack-Radial	3	0.004	5	0	0.004
42	187.7		Sealed Off Wye	1	0.000	0	0	0.000
43	195.9		Crack-Radial	3	0.004	5	0	0.004
44	198.0	642 S CHAUTAUQUA	Break-In Conn	1	0.001	0	0	0.001
45	199.0		Broken Pipe	5	0.060	100	0	0.060
46	203.8	5646-124	DS Manhole	1	0.000	0	0	0.000

Video Inspection Master Report

5/17/2013

9:54 AM

US Structure: 5646-124 655 S LORRAINE ST Date Insp: 11/7/2011 Basin: EC01F
 DS Structure: 5646-114 3007 E GILBERT ST Dir Televised: Upstream To Downstream

Pipe Information

Shape: Round Length Status: Project No. : C-021
 Dia/Ht: 8 Material: VCP
 Length: 213.0 Slope: 0.150

Obs. #	VTR Counter	Distance	Location	Description	Rating	Obsrvd (gpm)	Ratings			Remain (gpm)
							Est. (gpm)	Struct	Clean	
1		0.0	5646-124	US Manhole	1	0.000	0	0	0.000	
2		7.1		Wye Service / possibly abandoned	2	0.000	0	0	0.000	
3		9.6		Sealed Off Wye	1	0.000	0	0	0.000	
4		10.2		Crack-Radial	3	0.004	5	0	0.004	
5		13.0		Crack-Radial	3	0.004	5	0	0.004	
6		25.5		Crack-Radial	3	0.004	5	0	0.004	
7		28.2		Crack-Radial	3	0.004	5	0	0.004	
8		32.4		Sealed Off Wye	1	0.000	0	0	0.000	
9		32.9		Crack-Radial	3	0.004	5	0	0.004	
10		35.1		Sealed Off Wye	1	0.000	0	0	0.000	
11		43.2		Crack-Radial	3	0.004	5	0	0.004	
12		48.3		Crack-Radial	3	0.004	5	0	0.004	
13		53.3		Crack-Radial	2	0.002	2	0	0.002	
14		57.6		Wye Service / possibly abandoned	1	0.000	0	0	0.000	
15		58.3		Crack-Radial	3	0.004	5	0	0.004	
16		60.3		Sealed Off Wye	1	0.000	0	0	0.000	
17		63.5		Crack-Radial	3	0.004	5	0	0.004	
18		66.1		Crack-Radial	3	0.004	5	0	0.004	
19		69.0		Crack-Radial	2	0.002	2	0	0.002	
20		71.2		Crack-Radial	3	0.004	5	0	0.004	
21		78.7		Crack-Radial	2	0.002	2	0	0.002	
22		82.6		Sealed Off Wye	1	0.000	0	0	0.000	
23		84.8	648 S CHAUTAUQUA	Break-In Conn	1	0.001	0	0	0.001	
				(connection repaired by Sewer Maintenance since this televising)						
24		88.7		Crack-Radial	3	0.004	5	0	0.004	
25		96.5		Crack-Radial	3	0.004	5	0	0.004	
26		107.0	655 S LORRAINE	Wye Service	1	0.000	0	0	0.000	
27		110.9		Sealed Off Wye	1	0.000	0	0	0.000	
28		112.4	654 S CHAUTAUQUA	Wye Service	3	0.000	2	0	0.000	
				(connection repaired by Sewer Maintenance since this televising)						
29		114.3		Crack-Radial	4	0.008	10	0	0.008	
30		129.3		Crack-Radial	3	0.004	5	0	0.004	
31		133.8	655 S LORRAINE	Wye Service	1	0.000	0	0	0.000	

Video Inspection Master Report

5/17/2013

9:54 AM

US Structure: 5646-124 655 S LORRAINE ST Date Insp: 11/7/2011 Basin: EC01F
 DS Structure: 5646-114 3007 E GILBERT ST Dir Televised: Upstream To Downstream

32	136.0		Sealed Off Wye	1	0.000	0	0	0.000
33	142.1		Crack-Radial	3	0.004	5	0	0.004
34	144.5		Crack-Radial	3	0.004	5	0	0.004
35	152.2		Crack-Radial	2	0.002	2	0	0.002
36	154.6		Crack-Radial	1	0.001	1	0	0.001
37	159.0		Sealed Off Wye	1	0.000	0	0	0.000
38	161.4		Sealed Off Wye	1	0.000	0	0	0.000
39	162.3	656 S CHAUTAUQUA	Break-In Conn	4	0.008	60	0	0.008
		(connection repaired by Sewer Maintenance since this televising)						
40	177.4		Crack-Radial	4	0.008	10	0	0.008
41	184.2		Sealed Off Wye	1	0.000	0	0	0.000
42	185.0		Crack-Radial	3	0.004	5	0	0.004
43	186.6		Sealed Off Wye	1	0.000	0	0	0.000
44	187.4		Crack-Radial	3	0.004	5	0	0.004
45	190.0		Crack-Radial	3	0.004	5	0	0.004
46	192.4		Crack-Radial	3	0.004	5	0	0.004
47	202.6		Crack-Radial	3	0.004	5	0	0.004
48	205.2		Crack-Radial	3	0.004	5	0	0.004
49	210.0		Crack-Radial	3	0.004	5	0	0.004
50	213.5	5646-114	DS Manhole	1	0.000	0	0	0.000

The video recording stopped at 112 ft and the remainder was not available for inspection by office staff. -LML

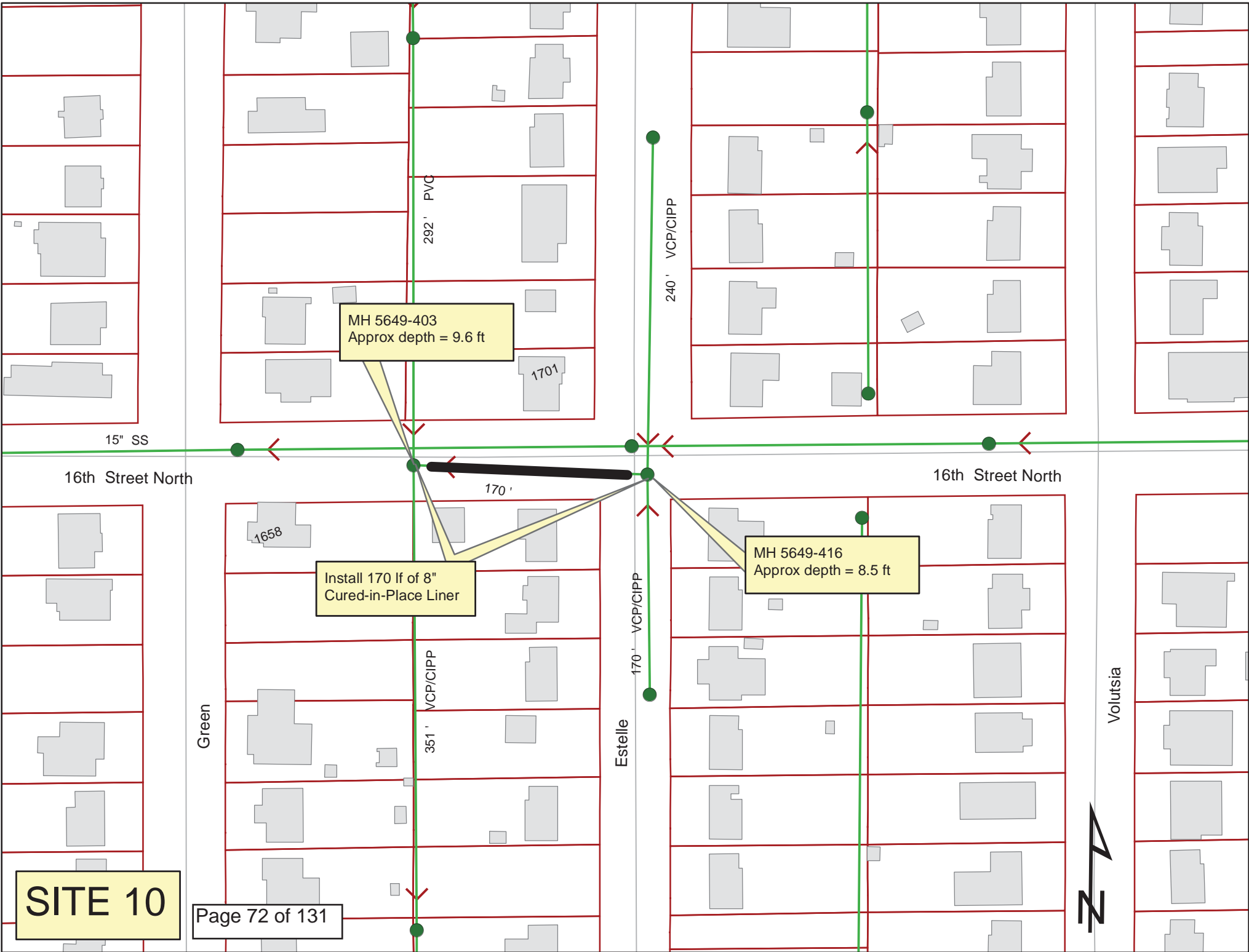
MH 5649-403
Approx depth = 9.6 ft

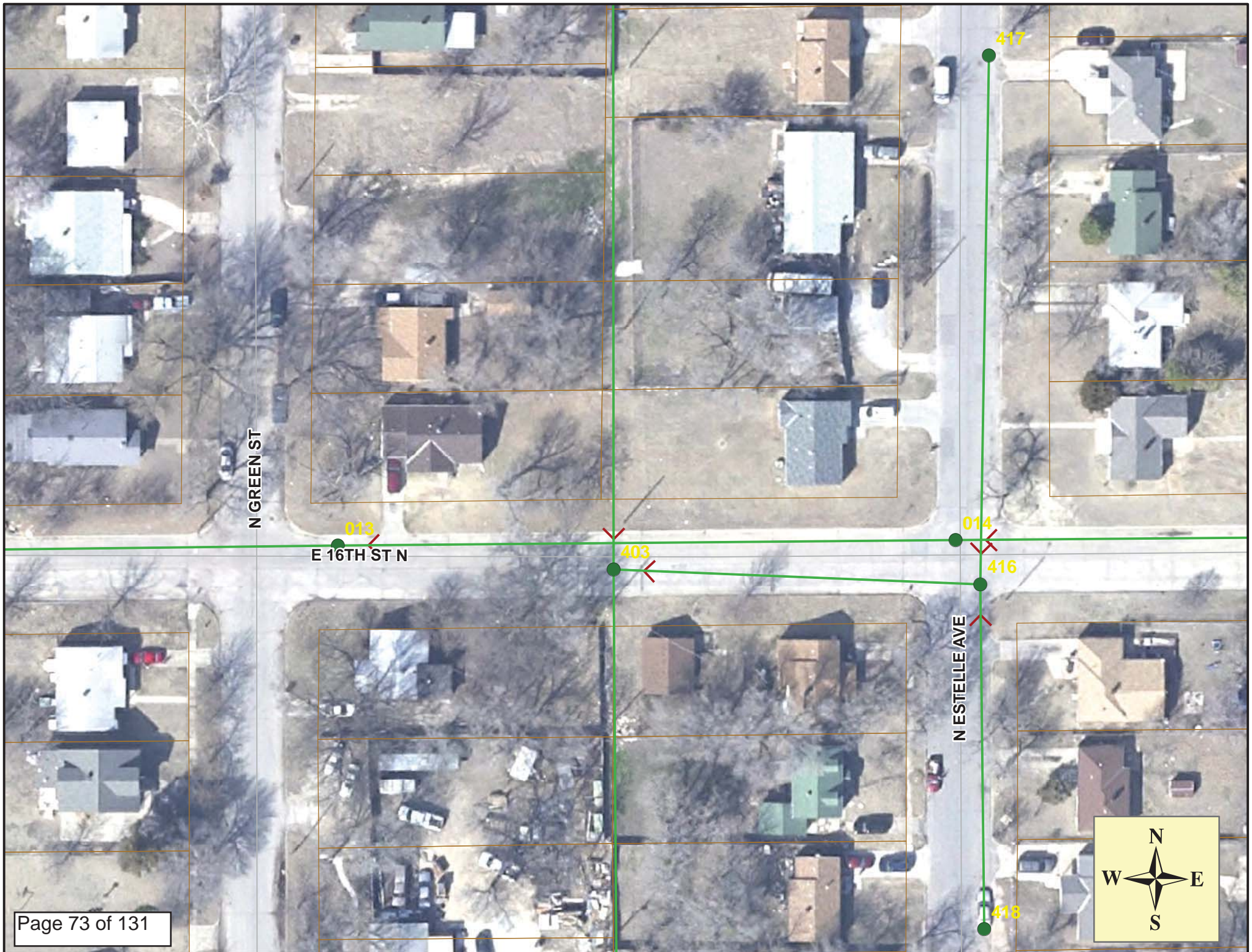
Install 170 lf of 8"
Cured-in-Place Liner

MH 5649-416
Approx depth = 8.5 ft

SITE 10

Page 72 of 131





N GREEN ST

E 16TH ST N

N ESTELLE AVE





Video Inspection Master Report

4/9/2013

10:45 AM

US Structure: 5649-416 1658 N ESTELLE AVE Date Insp: 1/3/2013 Basin: EC02B
 DS Structure: 5649-403 1701 N ESTELLE ST Dir Televised: Upstream To Downstream

Pipe Information

Project No. : C-210 Dia/Ht: 8 Material: VCP Length: 170.0 DVD #0761

Obs. #	VTR Counter	Distance	Location	Description	Rating	Obsrvd (gpm)	Ratings		Remain (gpm)
							Est. (gpm)	Struct Clean	
1		0.8		5649-416 US Manhole	1				
2		0.0	Joint	Offset	3				
3		0.0	Joint	Offset	3				
4		1.0		Crack-Radial	3				
5		7.4		Crack-Radial	3				
6		9.6	Joint	Offset	2				
7		12.4		Crack-Radial	2				
8		17.0		Crack-Radial	2				
9		19.7		Crack-Radial	3				
10		22.0	Joint	Offset	2				
11		24.7		Crack-Radial	3				
12		27.1	Joint	Offset	3				
13		29.8	Joint	Offset	2				
14		32.3	Joint	Offset	2				
15		32.3		Roots	3				
16		34.8		Crack-Radial	2				
17		34.8	Joint	Offset	2				
18		39.7	Joint	Offset	3				
19		42.2		Crack-Radial	3				
20		49.7	Joint	Offset	3				
21		52.4		Crack-Radial	2				
22		55.0		Crack-Radial	2				
23		57.1	Joint	Offset	3				
24		60.0		Crack-Radial	2				
25		62.2		Crack-Radial	3				
26		64.6	Joint	Offset	3				
27		67.4		Crack-Radial	2				
28		69.7	Joint	Offset	2				
29		77.1	Joint	Offset	3				
30		81.7		Crack-Horizontal	2				
31		82.1	Joint	Offset	3				
32		82.5		Crack-Radial	3				
33		84.9		Crack-Radial	2				
34		87.2		Crack-Radial	2				
35		87.2	Joint	Offset	2				
36		94.9	Joint	Offset	3				
37		95.3		Crack-Radial	3				
38		99.7	Joint	Offset	3				
39		102.5	Joint	Offset	2				
40		107.2	Joint	Offset	2				

Video Inspection Master Report

4/9/2013

10:45 AM

US Structure: 5649-416 **1658 N ESTELLE AVE** **Date Insp:** 1/3/2013 **Basin:** EC02B
DS Structure: 5649-403 **1701 N ESTELLE ST** **Dir Televised:** Upstream To Downstream

41	110.0		Crack-Radial	2
42	114.8		Crack-Radial	2
43	117.6		Broken Pipe	2
44	124.7	Joint	Offset	3
45	124.8		Crack-Radial	2
46	135.0		Crack-Radial	3
47	137.2	Joint	Offset	2
48	139.9		Crack-Radial	3
49	142.3	Joint	Offset	2
50	147.4	Joint	Offset	2
51	147.6		Crack-Radial	3
52	149.8	Joint	Offset	2
53	152.2	Joint	Offset	2
54	157.3		Crack-Radial	2
55	159.6	Joint	Offset	2
56	162.4	Joint	Offset	3
57	164.7	Joint	Offset	3
58	165.1		Crack-Radial	3
59	167.3	Offset Joint with cracks OK to install CIPP - LML	Broken Pipe	5
60	169.6	5649-403	DS Manhole	3

No taps on the line.
 Line has a history of high maintenance.
 -LML