

Lincoln Street

902 S. Edgemoor

5619 E. Lincoln

MH 5846-259
Approx depth = 13.6 ft

316'

MH 5846-258
938 S. Edgemoor
Approx depth = 13.6 ft

938

317'

Install 633 lf of 8" Cured-in-Place Liner
from MH 5846-259 to MH 5846-257

Castle

Edgemoor

958

961

Christine

MH 5846-257
Approx depth = 11.4 ft

Bayley

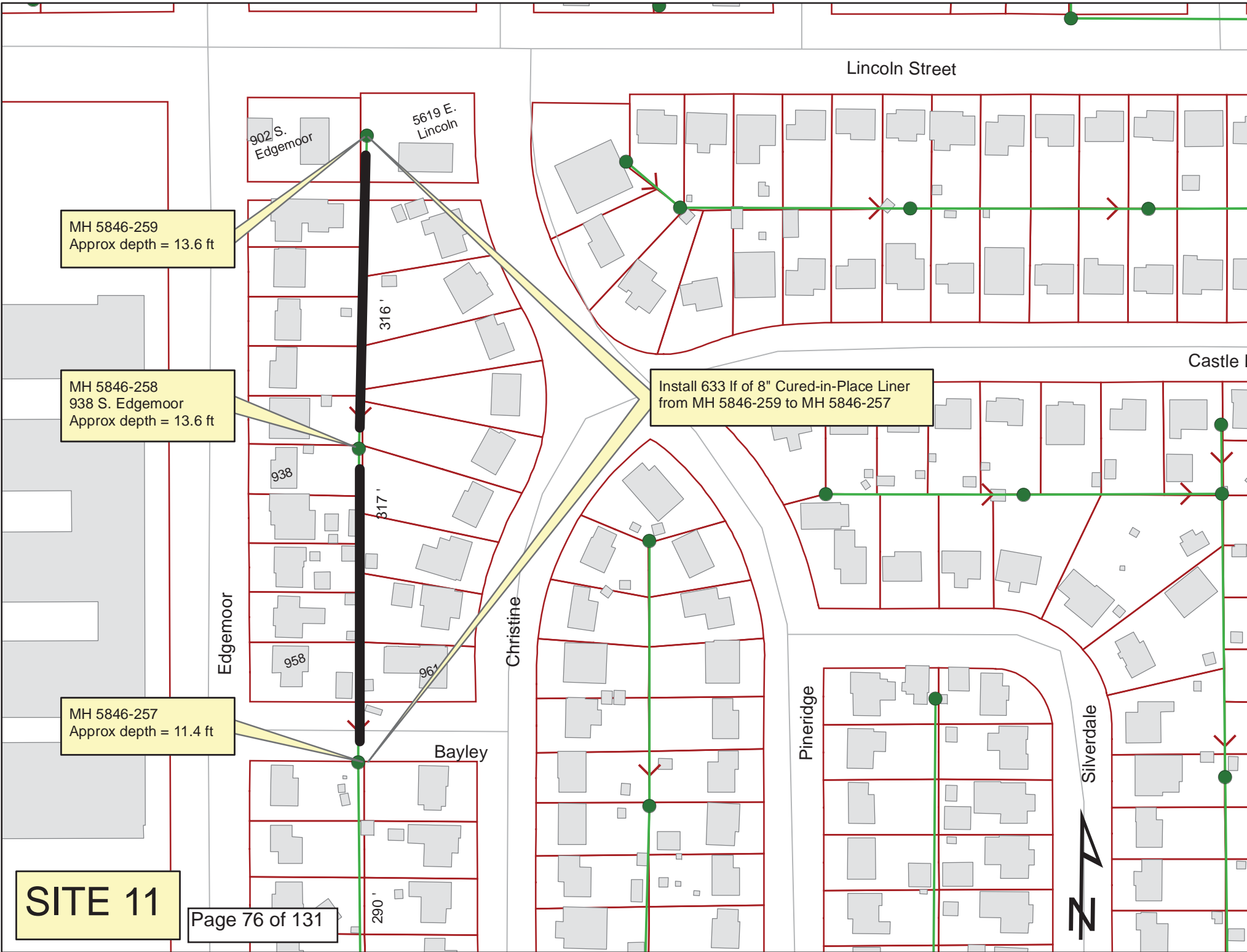
Pineridge

Silverdale

SITE 11

Page 76 of 131

290'







Video Inspection Master Report

7/1/2013

8:40 AM

US Structure: 5846-259 5621 LINCOLN ST Date Insp: 1/13/2012 Basin: E04A
 DS Structure: 5846-258 938 EDGEMOOR ST Dir Televised: Upstream To Downstream

Pipe Information

Shape: Round Length Status: Project No. : F-131
 Dia/Ht: 8 Material: VCP Index:
 Length: 316.2 Slope: 0.101 DVD #0697

Obs. #	VTR Counter	Distance	Location	Description	Rating	Obsrvd (gpm)	Ratings			Remain (gpm)
							Est. (gpm)	Struct	Clean	
1		0.0	5846-259	US Manhole	1					
2		6.6		Sealed Off Wye	1	0.000	0	0	0.000	
3		9.1		Break-In Conn	5	0.010	400	0	0.010	
902 S EDGEMOOR										
4		27.3		Break-In Conn	5	0.010	400	0	0.010	
5919 E LINCOLN										
5		37.1		Sealed Off Wye	1	0.000	0	0	0.000	
6		43.1		Sealed Off Wye	1	0.000	0	0	0.000	
7		89.0		Sealed Off Wye	2	0.000	0	0	0.000	
8		95.2		Wye Service	5	0.000	400	0	0.000	
914 S EDGEMOOR										
9		109.1		Crack-Horizontal	2	0.002	2	0	0.002	
10		139.7		Broken Pipe	3	0.010	60	0	0.010	
11		143.8		Break-In Conn	1	0.001	0	0	0.001	
915 S CHRISTINE / PVC										
12		146.7		Break-In Conn	1	0.001	0	0	0.001	
918 S EDGEMOOR										
13		192.5		Break-In Conn	2	0.002	0	0	0.002	
924 S EDGEMOOR										
14		205.2		Break-In Conn	1	0.001	0	0	0.001	
919 S CHRISTINE / PVC										
15		231.9		Broken Pipe	2	0.008	44	0	0.008	
16		244.6		Break-In Conn	1	0.001	0	0	0.001	
925 S CHRISTINE										
17		248.4		Wye Service	5	0.000	400	0	0.000	
928 S EDGEMOOR										
18		256.5		Roots	2	0.004	2	4	0.004	
19		259.7		Roots	1	0.002	1	1	0.002	
20		276.0		Break-In Conn	1	0.001	0	0	0.001	
931 S CHRISTINE										
21		278.1		Roots	1	0.002	1	1	0.002	
22		284.4		Roots	1	0.002	1	1	0.002	
23		294.6		Break-In Conn	5	0.010	400	0	0.010	
934 S EDGEMOOR										
24		304.0		Break-In Conn	3	0.004	2	0	0.004	
937 S CHRISTINE										
25		306.2		Broken Pipe	3	0.010	60	0	0.010	
26		315.5	5846-258	DS Manhole	1	0.000	0	0	0.000	

Video Inspection Master Report

7/1/2013

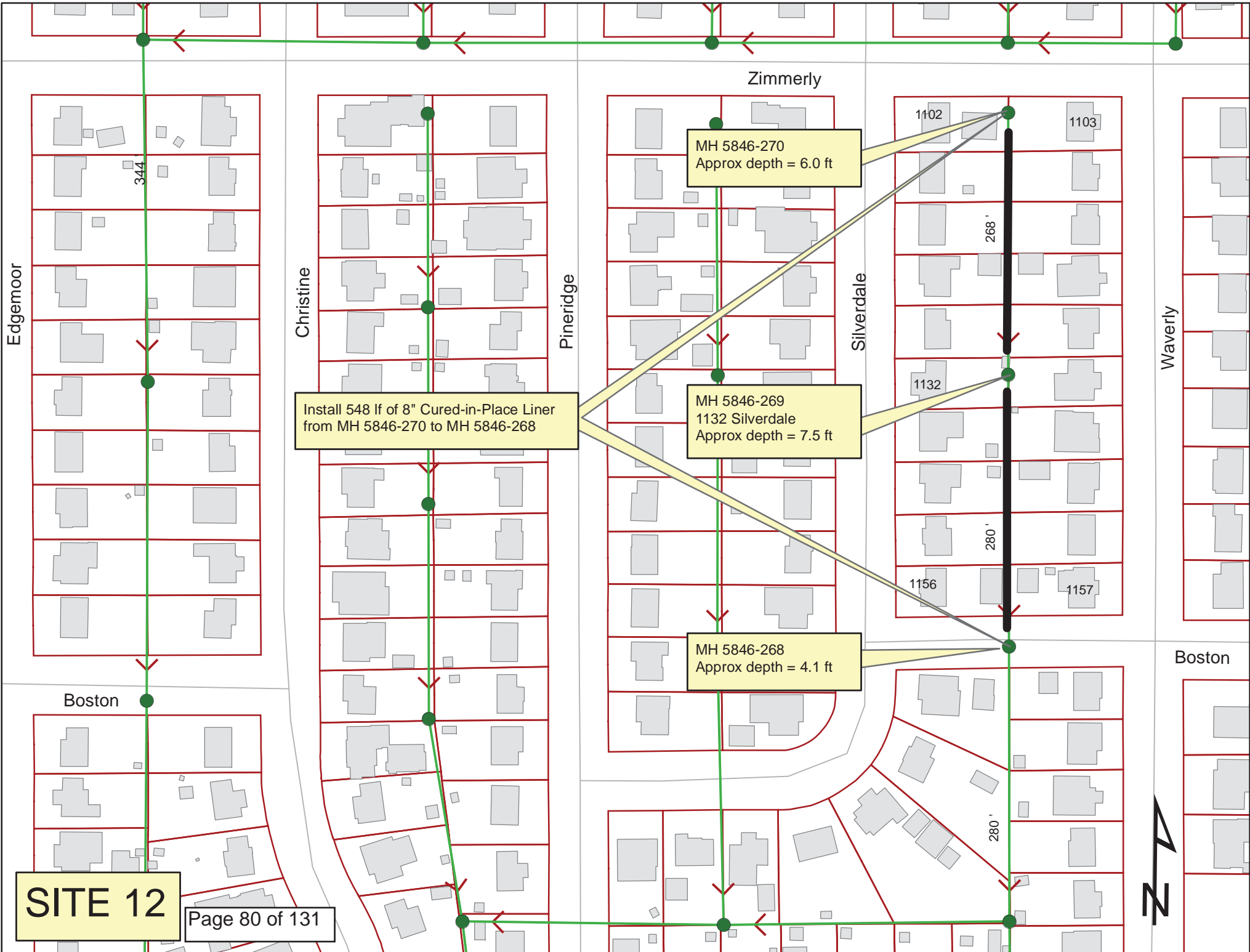
8:40 AM

US Structure: 5846-258 **938 EDGEMOOR ST** **Date Insp:** 1/13/2012 **Basin:** E04A
DS Structure: 5846-257 **1003 S CHRISTINE ST** **Dir Televised:** Upstream To Downstream

Pipe Information

Shape: Round	Length Status:	Project No. : F-131
Dia/Ht: 8	Material: VCP	Index:
Length: 316.1	Slope: 0.098	Surface:

Obs. #	VTR Counter	Distance	Location	Description	Rating	Obsrvd (gpm)	Ratings			Remain (gpm)
							Est. (gpm)	Struct	Clean	
1		0.0	5846-258	US Manhole	1	0.000	0	0	0.000	
2		28.9		Break-In Conn	5	0.010	400	0	0.010	
			938 S EDGEMOOR							
3		44.2		Break-In Conn	1	0.001	0	0	0.001	
			943 S CHRISTINE							
4		47.1		Crack-Horizontal	1	0.001	1	0	0.001	
5		78.3		Break-In Conn	1	0.001	0	0	0.001	
			944 S EDGEMOOR							
6		106.3		Break-In Conn	1	0.001	0	0	0.001	
			949 S CHRISTINE / PVC							
7		127.8		Break-In Conn	3	0.004	2	0	0.004	
			948 S EDGEMOOR							
8		165.2		Break-In Conn	1	0.001	0	0	0.001	
			955 S CHRISTINE							
9		177.6		Break-In Conn	1	0.001	0	0	0.001	
			952 S EDGEMOOR							
10		180.7		Crack-Horizontal	1	0.001	1	0	0.001	
11		209.0		Crack-Horizontal	1	0.001	1	0	0.001	
12		212.1		Crack-Horizontal	1	0.001	1	0	0.001	
13		221.8		Crack-Horizontal	1	0.001	1	0	0.001	
14		224.5		Crack-Horizontal	2	0.002	2	0	0.002	
15		231.0		Break-In Conn	5	0.010	400	0	0.010	
			958 S EDGEMOOR							
16		234.4		Wye Service	5	0.000	400	0	0.000	
			961 S CHRISTINE							
17		252.6		Crack-Horizontal	2	0.002	2	0	0.002	
18		273.9		Roots	1	0.002	1	1	0.002	
19		317.5	5846-257	DS Manhole	1	0.000	0	0	0.000	



MH 5846-270
Approx depth = 6.0 ft

Install 548 lf of 8" Cured-in-Place Liner
from MH 5846-270 to MH 5846-268

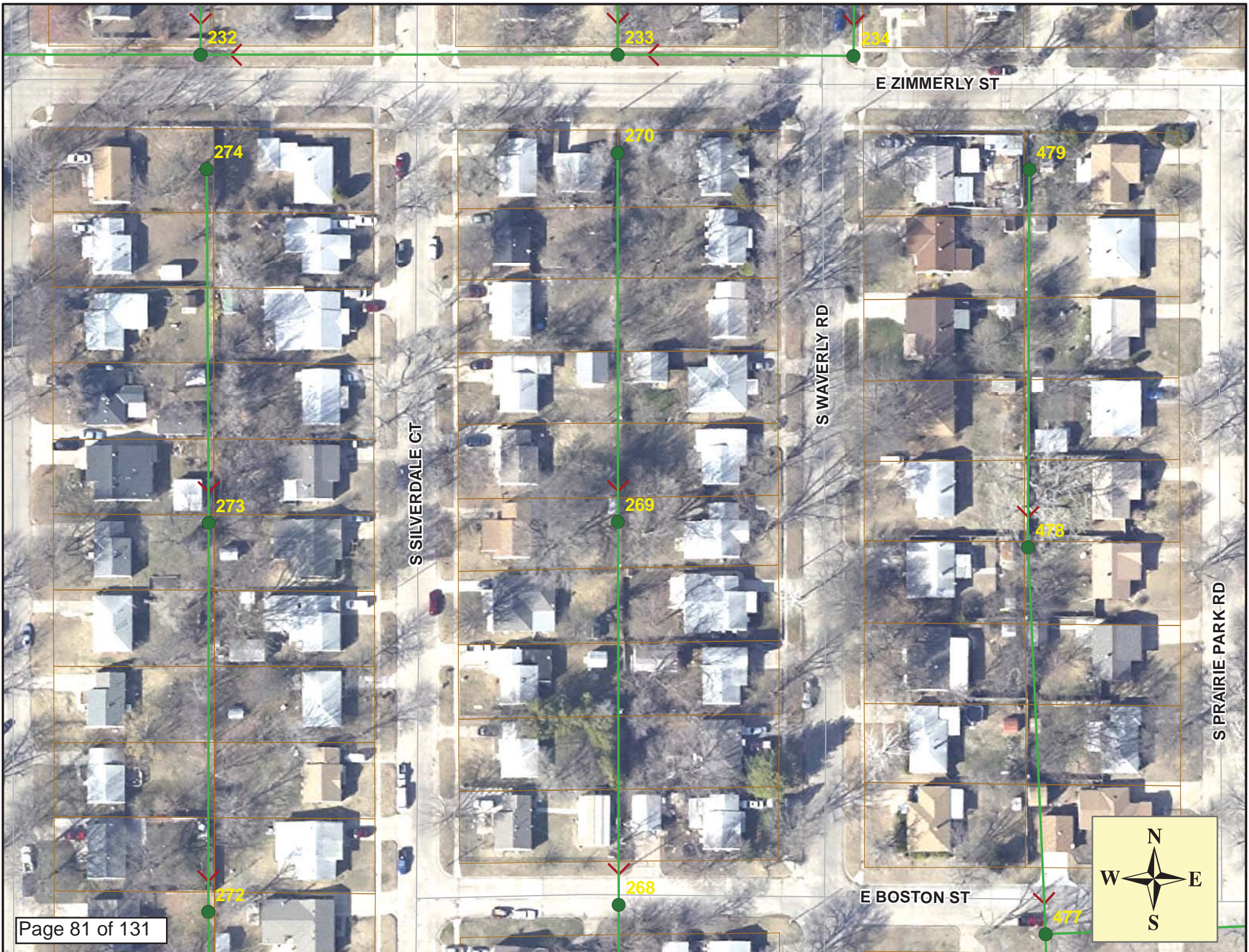
MH 5846-269
1132 Silverdale
Approx depth = 7.5 ft

MH 5846-268
Approx depth = 4.1 ft

SITE 12

Page 80 of 131





Video Inspection Master Report

7/1/2013

10:05 AM

US Structure: 5846-270 **1103 WAVERLY ST** **Date Insp:** 8/19/2008 **Basin:** E04A
DS Structure: 5846-269 **1132 SILVERDALE CT** **Dir Televised:** Upstream To Downstream

Pipe Information

Shape: Round **Length Status:** **Project No. :** F-176
Dia/Ht: 8 **Material:** VCP **Index:**
Length: 268.0 **Slope:** 0.097 **Surface:**

Inspection Information

Crew: 692 **Percent Full:** **Tape ID:** DVD #0435
Weather: Cloudy **Purpose:** TV Existing Line **Counter Start:**
Surface Cond: Trees & Fences **Flow:** Normal Flow **Counter Stop:**

Obs. #	VTR Counter	Distance	Location	Description	Rating	Obsrvd (gpm)	Ratings			Remain (gpm)
							Est. (gpm)	Struct	Clean	
1		0.0	US Manhole	5846-270	1					
2		2.0	Joint		3	0.010	20	0	0.010	
3		27.9	West	Break-In Conn	2	0.002	0	0	0.002	
	1102 S SILVERDALE CT			4" Break In Connection	Comment: ROOTS					
4		31.0	East	Break-In Conn	2	0.002	0	0	0.002	
	1103 S WAVERLY			4" Predco Saddle	Comment: PVC tap but still has roots around it					
5		36.3	Joint	Roots	2	0.004	2	4	0.004	
6		39.4	Joint	Roots	1	0.002	1	1	0.002	
7		42.4	Joint	Roots	1	0.002	1	1	0.002	
8		45.5	Joint	Roots	1	0.002	1	1	0.002	
9		48.4	Joint	Roots	1	0.002	1	1	0.002	
10		51.6	Joint	Roots	1	0.002	1	1	0.002	
11		57.7	Joint	Roots / Offset	2	0.000	0	0	0.000	
12		60.6	Joint	Roots	1	0.002	1	1	0.002	
13		63.8	Joint	Roots	1	0.002	1	1	0.002	
14		67.0	Joint	Roots	1	0.002	1	1	0.002	
15		69.9	Joint	Roots	2	0.004	2	4	0.004	
16		72.9	Joint	Roots	1	0.002	1	1	0.002	
17		76.1	Joint	Roots	2	0.004	2	4	0.004	
18		79.1	Joint	Roots	1	0.002	1	1	0.002	
19		79.9	West	Wye Service	4	0.000	60	0	0.000	
	1108 S SILVERDALE CT			4" Clay Wye Connection	Comment: Tap full of roots					
20		82.2	Joint	Roots	1	0.002	1	1	0.002	
21		83.0	East	Wye Service	1	0.000	0	0	0.000	
	1109 S WAVERLY			4" Clay Wye Connection						

Video Inspection Master Report

7/1/2013

10:05 AM

US Structure: 5846-270 1103 WAVERLY ST Date Insp: 8/19/2008 Basin: E04A
 DS Structure: 5846-269 1132 SILVERDALE CT Dir Televised: Upstream To Downstream

22	85.1	Joint		Roots	1	0.002	1	1	0.002	
23	88.3	Joint		Roots	1	0.002	1	1	0.002	
24	91.3	Joint		Roots	1	0.002	1	1	0.002	
25	100.5	Joint		Roots	1	0.002	1	1	0.002	
26	104.2	Upper Right		Crack-Horizontal	2	0.002	2	0	0.002	
27	119.2	Joint		Roots	1	0.002	1	1	0.002	
28	121.8	Joint		Roots	1	0.002	1	1	0.002	
29	128.8	West		Wye Service	1	0.000	0	0	0.000	
1114 S SILVERDALE CT				4" Clay Wye Connection, roots inside						
30	131.8	East		Wye Service	2	0.000	0	0	0.000	
1115 S WAVERLY				4" Clay Wye Connection, roots inside						
31	137.2	Joint		Roots						
32	140.2	Joint		Roots	2	0.004	2	4	0.004	
33	143.3	Joint		Roots	3	0.008	5	8	0.008	
34	146.5	Joint		Roots	3	0.008	5	8	0.008	
35	149.7	Joint		Roots	1	0.002	1	1	0.002	
36	152.4	Joint		Roots	1	0.002	1	1	0.002	
37	162.0	Joint		Roots	1	0.002	1	1	0.002	
38	180.8	West		Wye Service	1	0.000	0	0	0.000	
1120 S SILVERDALE CT				4" Clay Wye Connection						
39	184.2	East		Wye Service	1	0.000	0	0	0.000	
1121 S WAVERLY				4" Clay Wye Connection						
40	230.4	West		Wye Service	1	0.000	0	0	0.000	
1126 S SILVERDALE CT				4" Clay Wye Connection						
41	233.5	East		Wye Service	1	0.000	0	0	0.000	
1127 S WAVERLY				4" Clay Wye Connection						
42	254.1	Joint		Roots	1	0.002	1	1	0.002	
43	257.0	Joint		Roots	1	0.002	1	1	0.002	
44	267.1	DS Manhole	5846-269		1				NEEDS REHAB	

Video Inspection Master Report

7/1/2013

10:05 AM

US Structure: 5846-269 **1132 SILVERDALE CT** **Date Insp:** 8/19/2008 **Basin:** E04A
DS Structure: 5846-268 **1203 WAVERLY ST** **Dir Televised:** Upstream To Downstream

Pipe Information

Shape: Round	Length Status:	Project No. : F-176
Dia/Ht: 8	Material: VCP	Index:
Length: 277.5	Slope: 0.097	DVD #0435

Obs. #	VTR Counter	Distance	Location	Description	Rating	Obsrvd (gpm)	Ratings			Remain (gpm)
							Est. (gpm)	Struct	Clean	
1		0.0	US Manhole	5846-269	1					
2		11.5	Joint		2	0.004	2	4	0.004	
3		12.6	West 4" Clay Wye Connection	Wye Service	3	1132 S SILVERDALE CT			ROOTS INSIDE	
4		14.6	Joint	Roots	1	0.002	1	1	0.002	
5		15.1	East 4" Clay Wye Connection	Wye Service	1	1133 S WAVERLY				
6		17.6	Joint	Roots	1	0.002	1	1	0.002	
7		48.0	Joint	Roots	1	0.002	1	1	0.002	
8		60.9	Joint	Roots	1	0.002	1	1	0.002	
9		61.0	West 4" Clay Wye Connection	Wye Service	1	1138 S SILVERDALE CT				
10		64.2	East 4" Clay Wye Connection	Wye Service	1	1139 S WAVERLY				
11		94.6	Joint	Roots	1	0.002	1	1	0.002	
12		103.6	Joint	Roots	1	0.002	1	1	0.002	
13		106.5	Joint	Roots	1	0.002	1	1	0.002	
14		113.3	West 4" Clay Wye Connection	Wye Service	2	1144 S SILVERDALE CT			ROOTS 2	
15		116.4	4" Clay Wye Connection	Wye Service	5	1145 S WAVERLY			HEAVY ROOTS INSIDE	
16		118.6	Joint	Roots	1	0.002	1	1	0.002	
17		124.7	Joint	Roots	1	0.002	1	1	0.002	
18		130.7	Joint	Roots	1	0.002	1	1	0.002	
19		152.4	Upper Left	Crack-Horizontal	2	0.002	2	0	0.002	
20		162.1	West 4" Clay Wye Connection	Wye Service	1	1150 S SILVERDALE CT				
21		165.3	East 4" Clay Wye Connection	Wye Service	1	1151 S WAVERLY				
22		198.3	Upper Right	Crack-Horizontal	2	0.002	2	0	0.002	
23		214.2	West	Wye Service	3	1156 S SILVERDALE CT			ROOTS 3	
24		216.6	Lower Left	Crack-Radial	3	0.004	5	0	0.004	
25		217.5	East 4" Clay Wye Connection	Wye Service	1	1157 S WAVERLY				
26		277.0	DS Manhole	5846-268						