

MH 5846-030
Approx depth = 7.6 ft

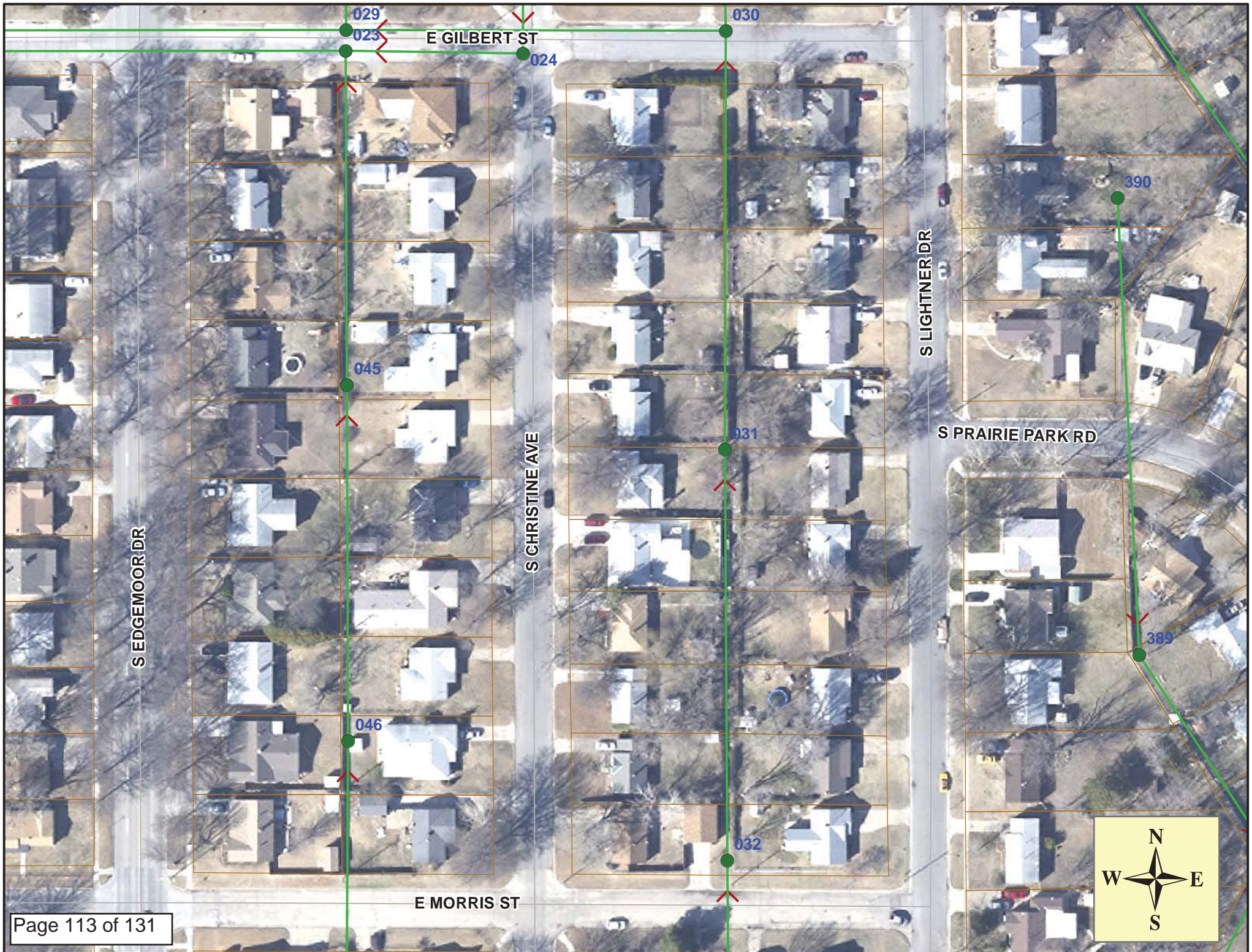
MH 5846-031
728 S. Christine
Approx depth = 8.4 ft

MH 5846-032
752 S. Christine
Approx depth = 7.9 ft

Install 631 lf of 8" Cured-in-Place Liner
from MH 5846-032 to MH 5846-030

SITE 19

Page 112 of 131



Video Inspection Master Report

3/1/2013

2:41 PM

US Structure: 5846-032 752 CHRISTINE ST Date Insp: 5/5/2011 Basin: E04D
 DS Structure: 5846-031 728 CHRISTINE ST Dir Televised: Upstream To Downstream

Pipe Information

Project No. : F-144 Dia/Ht: 8 Material: VCP Length: 309.6

Obs. #	VTR Counter	Distance	Location	Description	Rating	Obsrvd (gpm)	Ratings			Remain (gpm)
							Est. (gpm)	Struct	Clean	
1		0.0	5846-032	US Manhole	1	0.000	0	0	0.000	
2		2.5	752 S CHRISTINE	Break-In Conn	1	0.001	0	0	0.001	
3		30.4		Sealed Off Wye	5	0.000	0	0	0.000	
4		32.7	751 S LIGHTNER	PVC Break-In Conn	1	0.001	0	0	0.001	
5		33.1	752 S CHIRSTINE	Extended VCP Break-In Conn	5	0.010	400	0	0.010	
6		63.0		Crack-Horizontal	3	0.004	5	0	0.004	
7		65.9		Crack-Radial	3	0.004	5	0	0.004	
8		66.6		Crack-Horizontal	3	0.004	5	0	0.004	
9		82.9	748 S CHRISTINE	Wye Service	3	0.000	2	0	0.000	
10		85.9	747 S LIGHTNER	Wye Service	3	0.000	2	0	0.000	
11		109.3		Broken Pipe	4	0.030	78	0	0.030	
12		112.5		Crack-Horizontal	4	0.008	10	0	0.008	
13		115.7		Crack-Horizontal	4	0.008	10	0	0.008	
14		118.3		Crack-Horizontal	3	0.004	5	0	0.004	
15		137.0	742 S CHRISTINE	Wye Service	1	0.000	0	0	0.000	
16		138.3		Crack-Horizontal	2	0.002	2	0	0.002	
17		140.1	741 S LIGHTNER	Break-In Conn	2	0.002	0	0	0.002	
18		152.1		Crack-Horizontal	3	0.004	5	0	0.004	
19		196.5	738 S CHRISTINE	Wye Service	2	0.000	0	0	0.000	
20		198.7	737 S LIGHTNER	PVC Break-In Conn	1	0.001	0	0	0.001	
21		247.0	732 S CHRISTINE	Wye Service	4	0.000	60	0	0.000	
22		250.6	731 S LIGHTNER	Wye Service	3	0.000	2	0	0.000	
23		256.0		Broken Pipe	3	0.010	60	0	0.010	
24		268.7		Roots	2	0.004	2	4	0.004	
25		269.4		Crack-Horizontal	2	0.002	2	0	0.002	
26		274.8		Roots	3	0.008	5	8	0.008	
27		283.9		Broken Pipe	2	0.008	44	0	0.008	
28		296.2		Roots	3	0.008	5	8	0.008	
29		299.2		Roots	1	0.002	1	1	0.002	
30		300.2	728 S CHRISTINE	Wye Service	3	0.000	2	0	0.000	
31		303.5	727 S LIGHTNER	Wye Service	5	0.000	400	0	0.000	
32		305.2	Offset Joint / shifted in crown	Broken Pipe	4	OK to line - LML				
33		309.0	5846-031	DS Manhole	1					

Lots of cracks. Wyes have roots. Line in poor cond. - LML

Video Inspection Master Report

3/1/2013

2:41 PM

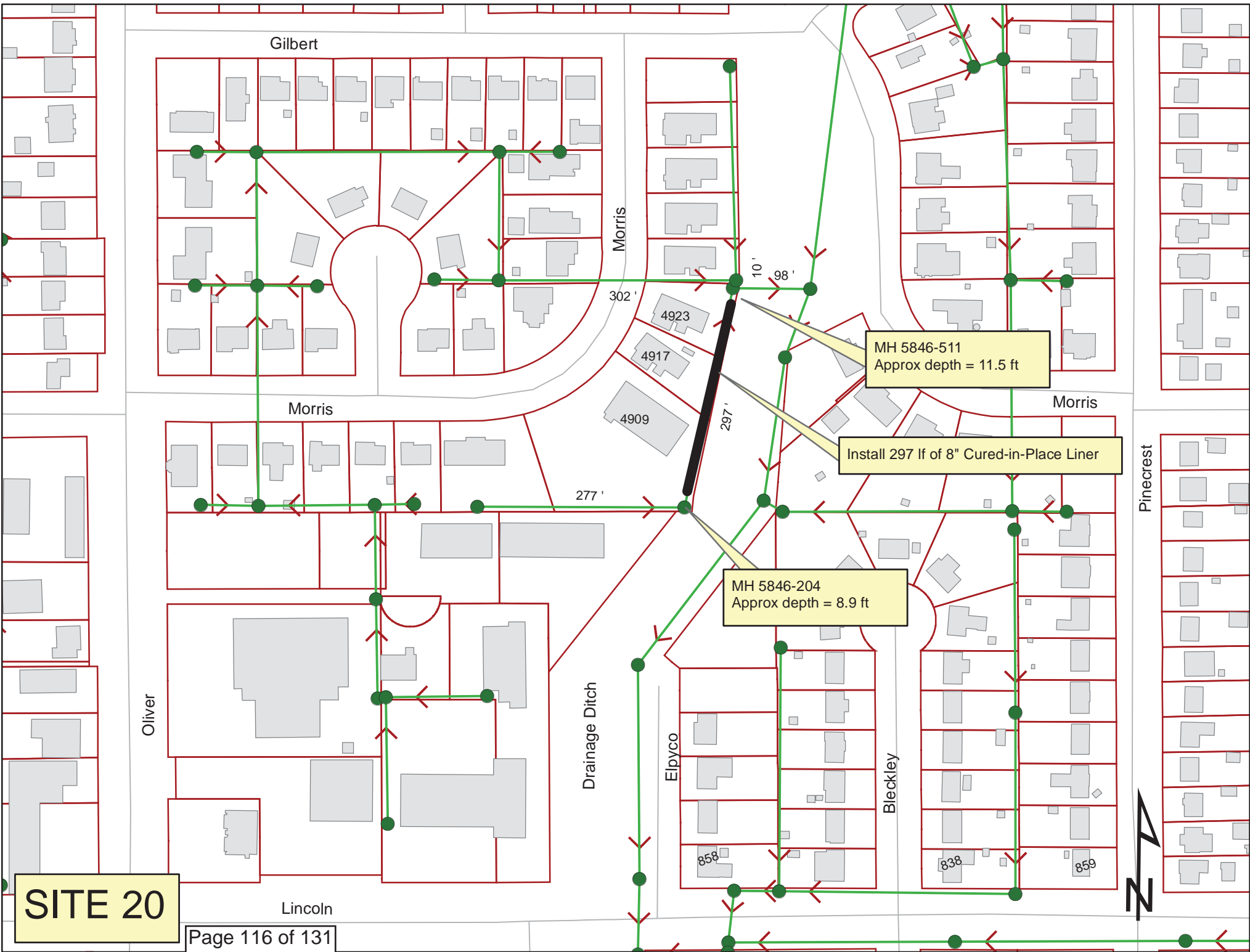
US Structure: 5846-031 **728** **CHRISTINE ST** **Date Insp:** 5/9/2011 **Basin:** E04D
DS Structure: 5846-030 **651** **LIGHTNER ST** **Dir Televised:** Upstream To Downstream

Pipe Information

Shape: Round	Length Status:	Project No. : F-144
Dia/Ht: 8	Material: VCP	Index:
Length: 320.8	Slope: 0.100	Surface: Paved & Unpaved

Obs. #	VTR Counter	Distance	Location	Description	Rating	Obsrvd (gpm)	Ratings			Remain (gpm)
							Est. (gpm)	Struct	Clean	
1		0.0		US Manhole	1	0.000	0	0	0.000	
2		5.0		Roots	1	0.002	1	1	0.002	
3		5.8		Crack-Horizontal	2	0.002	2	0	0.002	
4		48.7	724 S CHRISTINE	packed w/roots / Wye Service	5	0.000	400	0	0.000	
5		53.1	721 S LIGHTNER	Wye Service	4	0.000	60	0	0.000	
6		105.7	720 S CHRISTINE	Wye Service	1	0.000	0	0	0.000	
7		109.0	717 S LIGHTNER	Wye Service	1	0.000	0	0	0.000	
8		160.8	714 S CHRISTINE	Break-In Conn	1	0.001	0	0	0.001	
9		164.9	711 S LIGHTNER	Wye Service	2	0.000	0	0	0.000	
10		200.9		Crack-Horizontal	2	0.002	2	0	0.002	
11		208.3		Crack-Horizontal	2	0.002	2	0	0.002	
12		213.4	Cracks in all quadrants	Broken Pipe	3	0.010	60	0	0.010	
13		216.8	708 S CHRISTINE	Break-In Conn	3	0.004	2	0	0.004	
14		219.7		Crack-Horizontal	3	0.004	5	0	0.004	
15		220.7	707 S LIGHTNER	Wye Service	1	0.000	0	0	0.000	
16		222.8		Crack-Horizontal	2	0.002	2	0	0.002	
17		241.4		Broken Pipe	3	0.010	60	0	0.010	
18		244.7		Crack-Horizontal	4	0.008	10	0	0.008	
19		247.8		Crack-Horizontal	3	0.004	5	0	0.004	
20		251.2		Crack-Horizontal	3	0.004	5	0	0.004	
21		254.3		Broken Pipe	3	0.010	60	0	0.010	
22		257.0		Broken Pipe	4	0.030	78	0	0.030	
23		260.2		Broken Pipe	3	0.010	60	0	0.010	
24		263.6		Crack-Horizontal	3	0.004	5	0	0.004	
25		269.6	702 S CHRISTINE	Break-In Conn	1	0.001	0	0	0.001	
26		273.4	701 S LIGHTNER	Wye Service	4	0.000	60	0	0.000	
27		291.3		Roots	2	0.004	2	4	0.004	
28		294.3		Roots	2	0.004	2	4	0.004	
29		320.5	5846-030	DS Manhole	1	0.000	0	0	0.000	

Lots of cracks not listed on this video log - LML



SITE 20

Gilbert

Morris

302'

4923

4917

4909

Morris

277'

297'

10'

98'

MH 5846-511
Approx depth = 11.5 ft

Install 297 lf of 8" Cured-in-Place Liner

MH 5846-204
Approx depth = 8.9 ft

Oliver

Drainage Ditch

Elpyco

Bleckley

Pinecrest

Lincoln

858

838

858





Video Inspection Master Report

7/25/2013

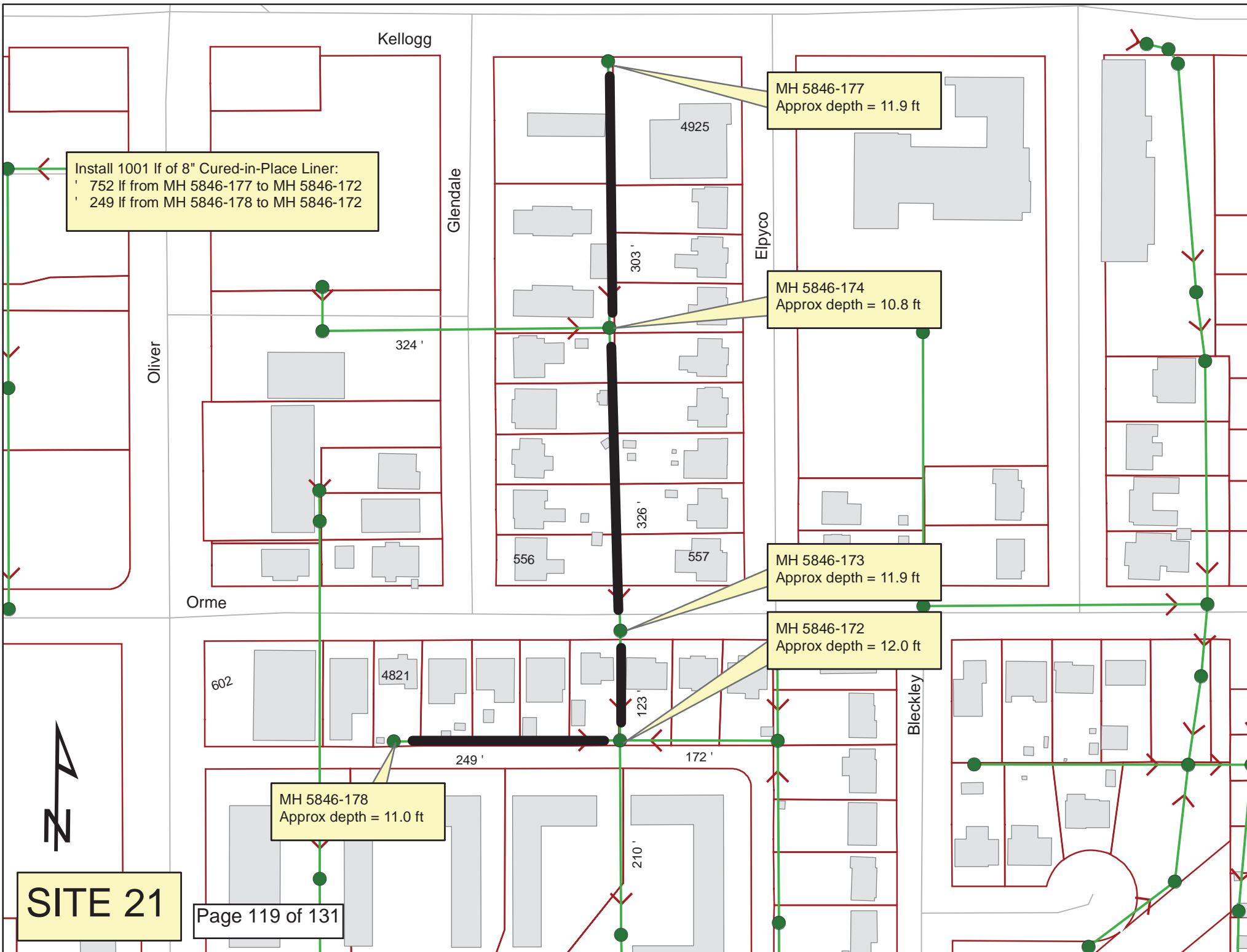
7:52 AM

US Structure: 5846-204 4847 MORRIS ST Date Insp: 2/22/2012 Basin: E04A
 DS Structure: 5846-511 4923 E MORRIS ST Dir Televised: Downstream To Upstream

Pipe Information

Project No. : G-225 Dia/Ht: 8 Material: VCP Length: 297.0

Obs. #	VTR Counter	Distance	Location	Description	Rating	Obsrvd (gpm)	Ratings		Remain (gpm)
							Est. (gpm)	Struct Clean	
1		0.0		TV against the flow Pipe begins as PVC at the manhole wall	1				
2		6.7		VCP begins / PVC ends	1				
3		18.0		Crack-Horizontal	3				
4		26.0		Crack-Horizontal	3				
5		32.8		Crack-Horizontal	3				
6		36.6	Hole in east side of pipe	Broken Pipe	4			OK to line - LML	
7		58.3	4925 E MORRIS	Wye Service	1				
8		58.4	Joint	Offset	3				
9		61.3	Joint	Offset	3				
10		77.7	Joint	Offset	3				
11		83.6	Joint	Offset	2				
12		85.6	Joint	Offset	2				
13		91.4	Joint	Offset	2				
14		95.3	Joint	Offset	2				
15		97.4	Joint	Offset	3				
16		109.3	Joint	Offset	3				
17		113.3	Joint	Offset	2				
18		115.7	Joint	Offset	3				
19		118.6	Joint	Offset	3				
20		118.9	Cracks at the joint	Broken Pipe	3				
21		121.5	Joint	Offset	3				
22		124.6	Joint	Offset	3				
23		124.6		Crack-Horizontal	2				
24		127.7	Joint	Offset	3				
25		130.4	4919 E MORRIS	Wye Service	2				
26		142.2	Joint	Offset	3				
27		169.5	Joint	Offset	3				
28		172.1	Joint	Offset	2				
29		181.0	Joint	Offset	3				
30		203.0		Crack-Horizontal	3				
31		205.7		Crack-Horizontal	2				
32		208.1	Joint	Offset	3				
33		216.4	4909 E MORRIS	Break-In Conn	4				
34		296.0	5846-204	US Manhole / needs a new bench & invert - LML					



Install 1001 lf of 8" Cured-in-Place Liner:
 ' 752 lf from MH 5846-177 to MH 5846-172
 ' 249 lf from MH 5846-178 to MH 5846-172

MH 5846-177
 Approx depth = 11.9 ft

MH 5846-174
 Approx depth = 10.8 ft

MH 5846-173
 Approx depth = 11.9 ft

MH 5846-172
 Approx depth = 12.0 ft

MH 5846-178
 Approx depth = 11.0 ft

SITE 21



Video Inspection Master Report

3/1/2013

1:28 PM

US Structure: 5846-177 4925 E KELLOGG ST **Date Insp:** 1/30/2012 **Basin:** E04C
DS Structure: 5846-174 526 S GLENDALE AVE **Dir Televised:** Upstream To Downstream

Pipe Information

Shape: Round	Length Status:	Project No. : E-166
Dia/Ht: 8	Material: VCP	Index:
Length: 295.7	Slope: 0.905	Surface: Paved & Unpaved

Obs. #	VTR Counter	Distance	Location	Description	Rating	Ratings				
						Obsrvd (gpm)	Est. (gpm)	Struct	Clean	Remain (gpm)
1		0.0	5846-177	US Manhole	1					
2		8.6	4901 E KELLOGG DRIVE	Wye Service	1					
3		20.7	<i>(wyes w/o addresses are sealed off)</i>	Wye Service	1	seal is leaking				
4		48.0		Wye Service	1					
5		51.3		Wye Service	1	seal is leaking				
6		72.6		Wye Service	1	seal is leaking				
7		85.6	4901 E KELLOGG DRIVE	Break-In Conn	1					
8		96.8		Wye Service	1					
9		99.9	4925 E KELLOGG DRIVE	Wye Service	1	roots				
10		121.1	<i>(not sealed at the main?)</i>	Wye Service	2					
11		142.0		Wye Service	1	seal is leaking				
12		144.2	518 S GLENDALE	Wye Service	2					
13		149.3		Scaling	3	mineral deposits				
14		155.4		Scaling	2	mineral deposits				
15		167.6		Scaling	3	mineral deposits				
16		168.5		Wye Service	3	seal is leaking				
17		172.1		Wye Service	2	seal is leaking				
18		175.1	520 S GLENDALE	Break-In Conn	2					
19		176.6		Scaling	3	mineral deposits				
20		179.4		Scaling	3	mineral deposits				
21		196.8	517 S ELPYCO	Wye Service	1					
22		205.9		Wye Service	1					
23		207.1		Scaling	3					
24		221.5		Wye Service	1					
25		245.4	523 S ELPYCO	Wye Service	1					
26		262.2		Scaling	2					
27		270.0		Wye Service	1	seal is leaking				
28		274.4		Scaling	3					
29		294.7	529 S ELPYCO	Wye Service	1					
30		299.2		Scaling	3					
31		303.1	5846-174	DS Manhole	2					

Needs lined for the infiltration issues - LML

Video Inspection Master Report

3/1/2013

1:28 PM

US Structure: 5846-174 **526 S GLENDALE AVE** **Date Insp:** 1/30/2012 **Basin:** E04C
DS Structure: 5846-173 **4911 E ORME ST** **Dir Televised:** Upstream To Downstream

Pipe Information

Shape: Round	Length Status:	Project No. : E-166
Dia/Ht: 8	Material: VCP	Index:
Length: 326.1	Slope: 0.215	Surface:

Obs. #	VTR Counter	Distance	Location	Description	Rating	Obsrvd (gpm)	Ratings		Remain (gpm)
							Est. (gpm)	Struct Clean	
1		0.0	5846-174	US Manhole	1				
2		13.8		Scaling	2				
3		15.4		Wye Service	3	seal is leaking / mineral deposits			
4		18.9		Wye Service	2	seal is leaking / mineral deposits			
5		19.8		Scaling	2				
6		26.0		Scaling	2				
7		39.7	536 S GLENDALE	Wye Service	1				
8		43.0	533 S ELPYCO	Wye Service	2	roots			
9		64.0		Wye Service	1	seal is leaking / mineral deposits			
10		67.4		Wye Service	1				
11		68.5		Scaling	3				
12		71.3		Scaling	2				
13		80.4	Joint	Offset	2				
14		88.4		Wye Service	1				
15		91.0	539 S ELPYCO	Wye Service	1				
16		112.4	540 S GLENDALE	Wye Service	1				
17		115.2		Wye Service	1				
18		139.6		Crack-Horizontal	3				
19		139.6	544 S GLENDALE	Wye Service	3				
20		141.1		Crack-Horizontal	3				
21		143.8	Joint	Offset	2				
22		145.7	545 S ELPYCO	Wye Service	1				
23		146.7	Joint	Offset	3				
24		146.9		Crack-Radial	3				
25		161.9	Joint	Offset	2				
26		166.3		Wye Service	1				
27		169.7		Wye Service	1				
28		173.6		Scaling	3				
29		190.3		Wye Service	1				
30		193.9		Wye Service	1				
31		201.0		Scaling	3				
32		213.3		Scaling	3				

Video Inspection Master Report

3/1/2013

1:28 PM

US Structure: 5846-174 526 S GLENDALE AVE Date Insp: 1/30/2012 Basin: E04C
 DS Structure: 5846-173 4911 E ORME ST Dir Televised: Upstream To Downstream

33	214.7	550 S GLENDALE	Wye Service	1	
34	218.0	551 S ELPYCO	Wye Service	1	
35	238.7		Wye Service	1	
36	242.1		Wye Service	1	
37	266.3	556 S GLENDALE	Wye Service	1	
38	269.1	557 S ELPYCO	Wye Service	2	
39	290.0		Wye Service	1	
40	292.9		Wye Service	1	
41	312.3	Joint	Offset	3	
42	314.4		Wye Service	1	
43	317.1		Wye Service	1	
44	320.2	Infiltration	Broken Pipe	3	mineral deposit at the cracks
45	325.2	5846-173	DS Manhole	1	

Video Inspection Master Report

3/1/2013

1:28 PM

US Structure: 5846-173 4911 E ORME ST Date Insp: 1/30/2012 Basin: E04C
 DS Structure: 5846-172 4919 ORME ST Dir Televised: Upstream To Downstream

Pipe Information

Shape: Round Length Status: Project No. : E-165
 Dia/Ht: 8 Material: VCP Index:
 Length: 140.0 Slope: 0.200 Surface:

Obs. #	VTR Counter	Distance	Location	Description	Rating	Ratings		
						Obsrvd (gpm)	Est. (gpm)	Struct Clean
1		0.0	5846-173	US Manhole	1			
2		16.0		Wye Service	1			
3		19.4		Wye Service	2			
4		38.5		Roots	2			
5		40.2		Wye Service	1			
6		43.5		Wye Service	1			
7		54.1		Roots	2			
8		59.9	Joint	Offset	2			
9		63.4	Joint	Offset	3			
10		66.4		Wye Service	1			
11		68.9		Wye Service	1			
12		69.8		Roots	2			
13		89.8		Wye Service	1			
14		93.5		Wye Service	1			
15		118.1		Wye Service	2			
16		118.3		Crack-Radial	3			
17		122.0	5846-172	DS Manhole	1			

Per the televisor, all the wyes are sealed off. No live taps on the line. - LML

Video Inspection Master Report

3/1/2013

1:28 PM

US Structure: 5846-178 4821 ORME ST **Date Insp:** 1/31/2012 **Basin:** E04C
DS Structure: 5846-172 4919 ORME ST **Dir Televised:** Upstream To Downstream

Pipe Information

Shape: Round	Length Status:	Project No. : F-098
Dia/Ht: 8	Material: VCP	Index:
Length: 249.5	Slope: 0.100	Surface: Paved & Unpaved

Obs. #	VTR Counter	Distance	Location	Description	Rating	Obsrvd (gpm)	Ratings			Remain (gpm)
							Est. (gpm)	Struct	Clean	
1		0.0	5846-178	US Manhole	1					
2		3.0	Joint / Crack-Radial / Crown		Offset	4				
4		12.4	Joint		Offset	2				
5		15.7		Crack-Horizontal	2					
6		19.1		Crack-Horizontal	2					
7		22.7		Crack-Horizontal	2					
8		24.6	Joint		Offset	2				
9		26.4		Crack-Horizontal	2					
10		28.7	4821 E ORME	Break-In Conn	1					
11		83.5	4825 E ORME	Wye Service	4	WO 2013-009439	12.5' deep			
			This tap was repaired by Sewer Maintenance since this tv log was made - LML							
12		88.4	Joint		Offset	3				
13		90.0	4808 E EASTWOOD	Wye Service	1					
14		134.3	4901 E ORME	Break-In Conn	2					
15		136.6	Joint		Offset	3				
16		154.0	Joint		Offset	2				
17		157.5	Joint		Offset	2				
18		166.5	Joint		Offset	2				
19		172.4	Joint		Offset	2				
20		184.6	Joint		Offset	2				
21		189.1	4907 E ORME	PVC Break-In Conn	1					
22		224.5	4911 E ORME	PVC Break-In Conn	5					
			This tap has slipped into the main. Sewer Maintenance may try to cut it back from inside the pipe. - LML							
23		244.2		Crack-Radial	3					
24		245.4	5846-172	DS Manhole	1					