

LATERAL 8, MAIN 18 - FOUR MILE CREEK SANITARY SEWER TO SERVE BELLECHASE 3RD ADDITION PROJECT NO. 468-84858 O.C.A. NO. 744345

GENERAL NOTES

- Contractor will be required to provide a minimum advance notice of two (2) working days to utility companies prior to starting any excavation as follows:

Kansas One-Call	1-800-DIG SAFE
The Contractor must notify the following in case of an emergency:	
Cox Communications	260-7204
Kansas Gas Service	888-482-4950
Westar	383-8600
Peoples Natural Gas Company	1-800-303-0357
AT&T	1-800-286-8313
City of Wichita Water Department	262-6000
City of Wichita Sewer Maintenance	262-6000
- Underground utility service lines and overhead utility pole lines are to be adjusted as necessary by others prior to construction unless the plans specifically call for their adjustment by the Contractor or unless the plans specifically identify a utility to be adjusted by its owner during construction. Existing utilities and their location, as shown on the plans, represent the best information obtainable for design. Location information has been obtained from the various utility companies and is either from company record drawings or company-provided field locations. The Contractor will be required to work around existing utilities within the right-of-way which do not conflict with proposed construction.
- Rubble from the removal of miscellaneous structures and excess excavation which is to be wasted shall be disposed of on sites to be provided by the Contractor. These sites shall be approved by the Engineer as to suitability, appearance and site location. Locations that, in the opinion of the Engineer, will leave an unsightly appearance will not be approved.
- All disposal sites must be approved by the Kansas Department of Health and Environment. Material either stockpiled or disposed of in a flood plain would require a Kansas State Board of Agriculture permit. Any material dumped in waters of the United States or wetlands is subject to U.S. Corps permitting regulations. Any material buried or stockpiled beyond approved of Engineers construction limits would require additional archeological investigations unless buried in a previously approved borrow location.
- The Engineer shall take field ties to all quarter section corners. The Contractor shall set a City survey monument in the required location where such quarter section corners fall within the limits of pavement construction. Survey monuments will be furnished by the City. The Engineer will accurately locate and install the iron at the quarter section corner. This work will not be paid for directly, but shall be considered subsidiary to the other pay items of work in the contract.
- The Contractor shall give all property owners and/or tenants of developed property directly abutting the construction of this project a minimum of ten (10) days advance notice prior to start of construction.
- The Contractor shall seed, fertilize and mulch all disturbed areas upon completion of construction. Incidental to the bid item for "Project Seeding".
- Site is to be mass graded with the paving project that will follow this project. Proposed manholes shown on this project are to be graded as shown in the detail on sheet 4.



BENCH MARKS

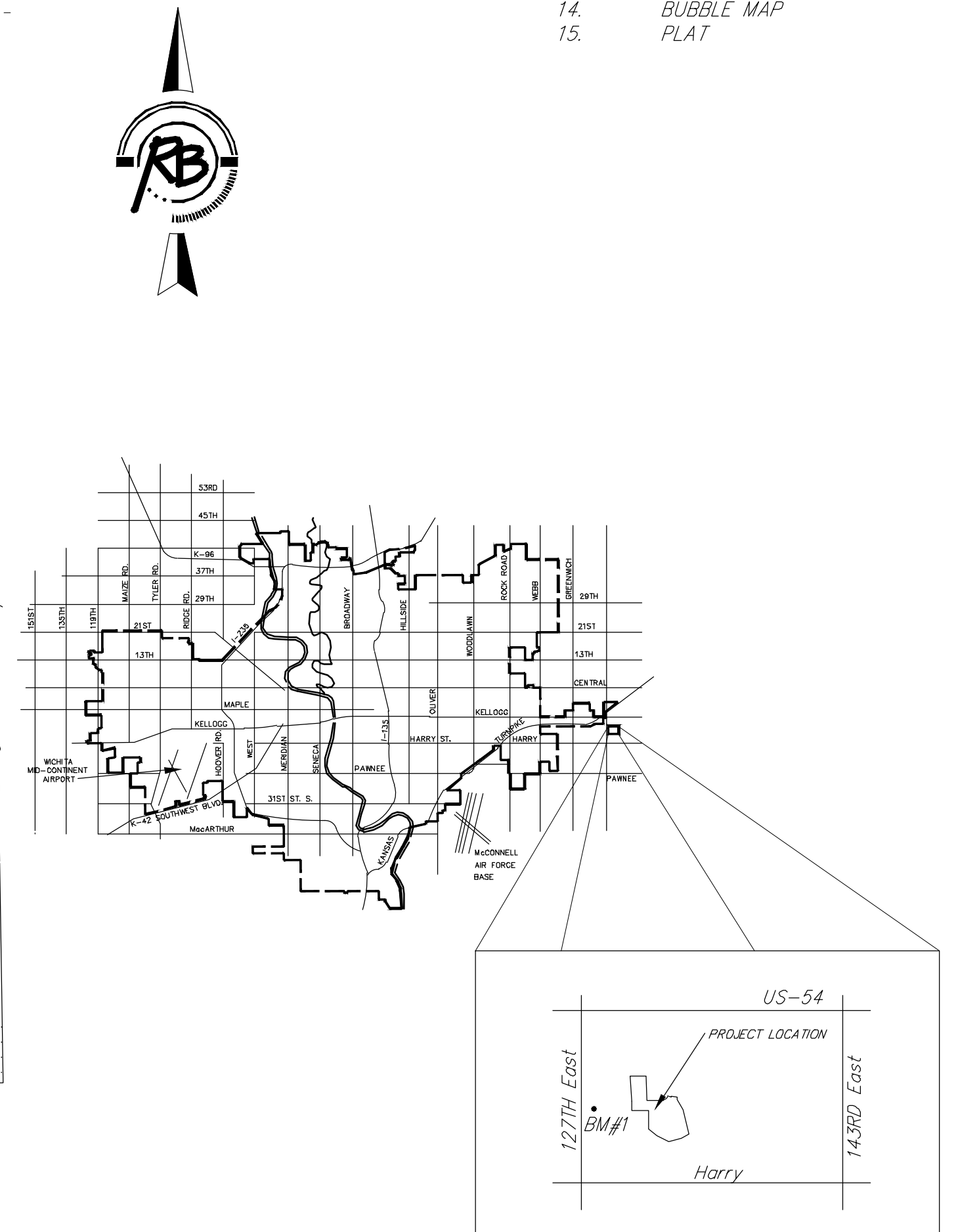
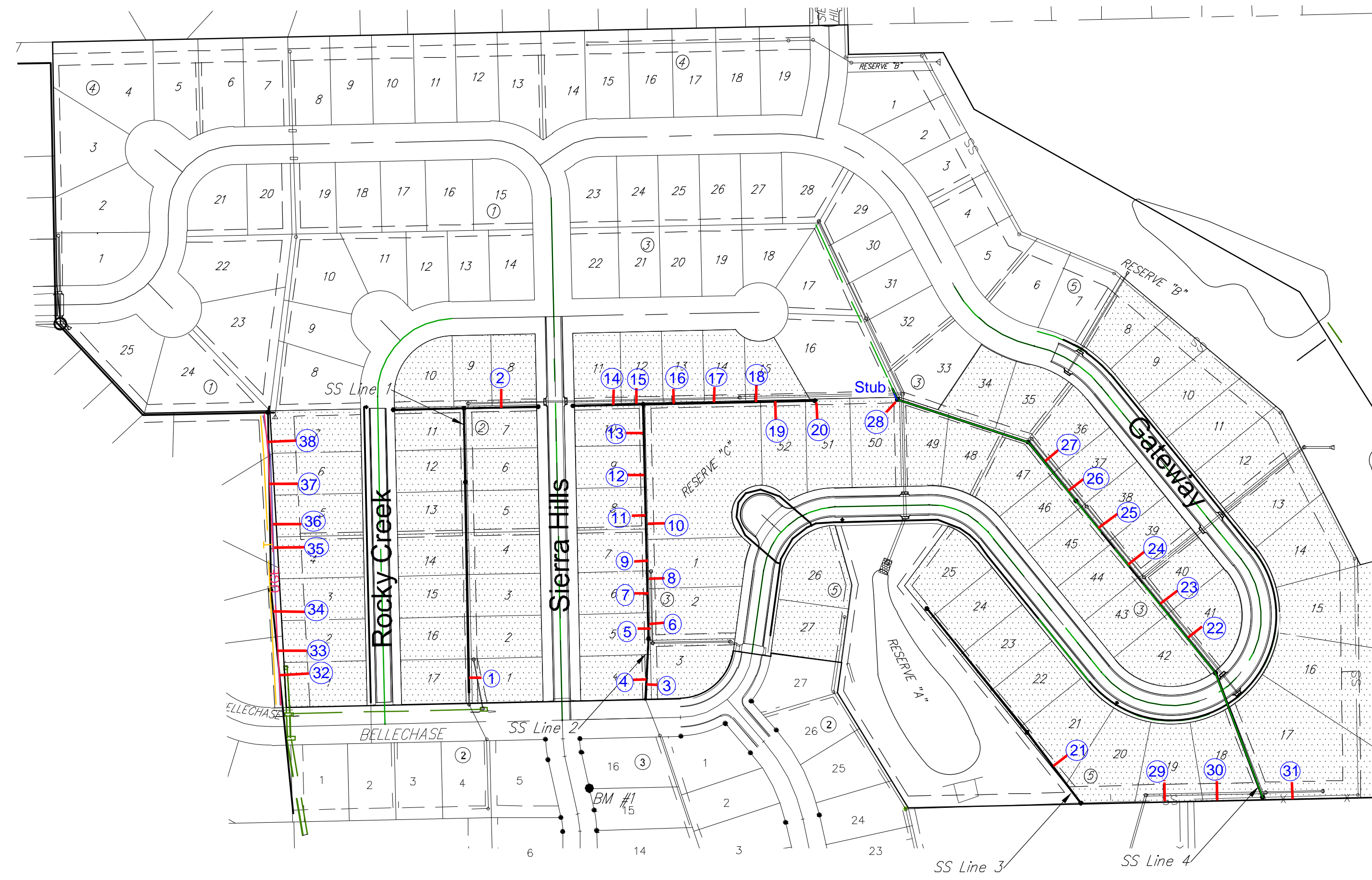
BENCHMARK:
 CUT ON TOP OF CURB AT LOT LINE COMMON TO LOTS 15 & 16, BLOCK 3, BELLECHASE 2ND ADDITION
 ELEVATION = 1322.83 (NGVD)

CUT ON TOP OF CURB AT LOT LINE COMMON TO LOTS 17 & 18, BLOCK 2, BELLECHASE 2ND ADDITION
 ELEVATION = 1317.25 (NGVD)

Mies Construction - Contractor
 J. Westhoff - City of Wichita, Field Project Engineer
 K. Yale - City of Wichita, Field Inspector
 As-Built
 Stub and Risers
 Release Date: 8/20/2013
 pdf: APRosas 7/24/2013

SHEET INDEX

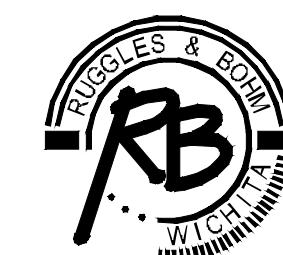
- | | |
|-------|------------------------------|
| 1. | TITLE |
| 2. | SS LINE 1 & 1A |
| 3. | SS LINE 2 |
| 4. | SS LINE 2A & 3 |
| 5. | SS LINE 4 |
| 5A. | SS EXISTING MAIN RISERS |
| 6. | PRECAST MANHOLE DETAIL |
| 7. | MANHOLE FRAME & COVER DETAIL |
| 8. | SS RISER DETAILS |
| 9-13. | EROSION CONTROL DETAILS |
| 14. | BUBBLE MAP |
| 15. | PLAT |



VICINITY MAP

IMPROVEMENT DISTRICT

CITY OF WICHITA, KANSAS
 GARY JANZEN, P.E. - CITY ENGINEER



Ruggles & Bohm, P.A.
 Engineering, Surveying, Land Planning
 924 North Main
 Wichita, Kansas 67203
 www.rbkansas.com
 (316) 264-8008
 (316) 264-4621 fax
 E-mail: info@rbkansas.com