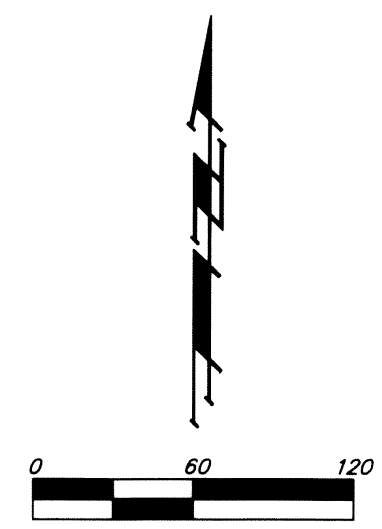
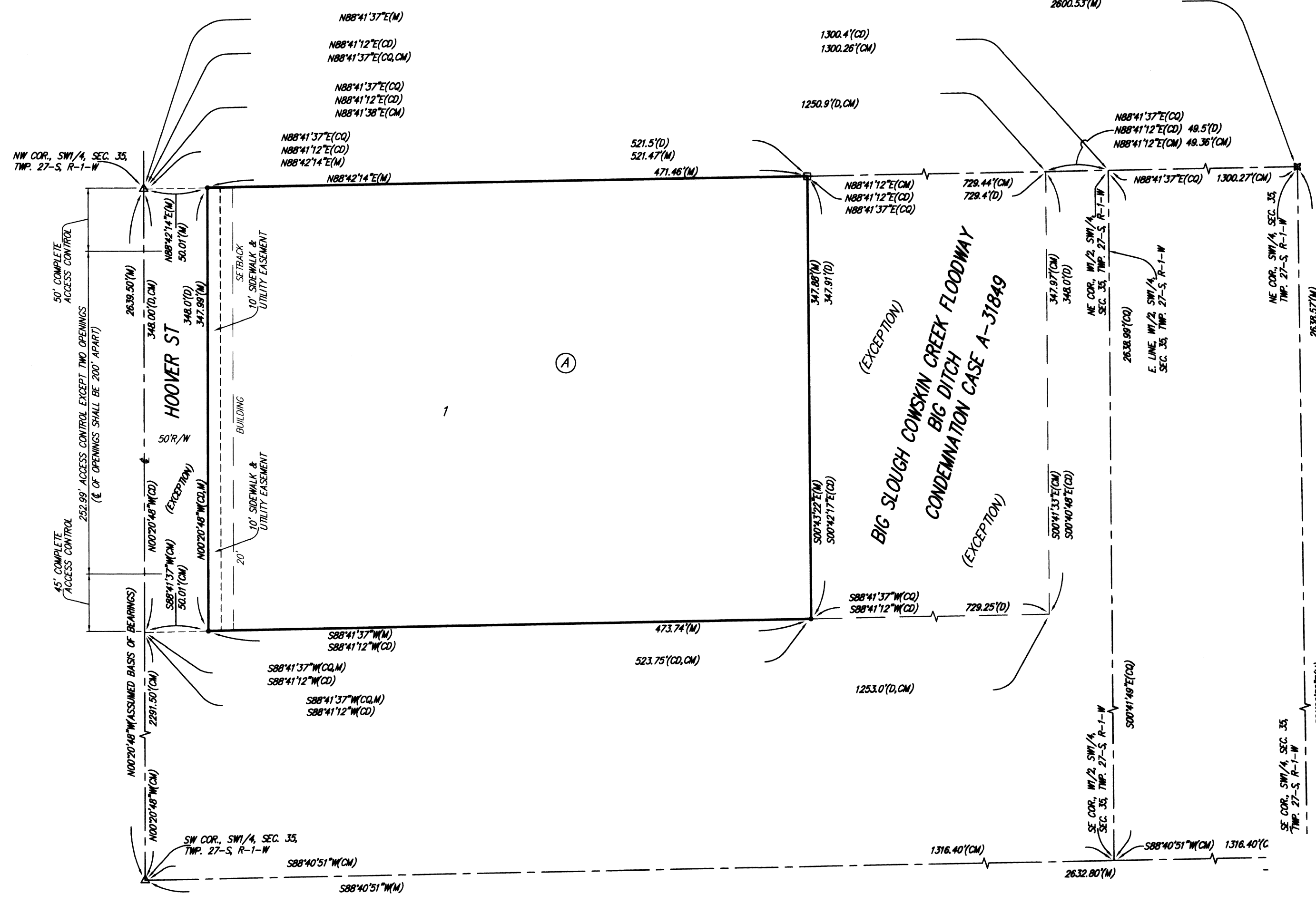


DEWITT 5TH ADDITION WICHITA, SEDGWICK COUNTY, KANSAS



- = #4 REBAR W/ 'BAUGHMAN' CAP (FOUND)
 - = CONCRETE RIGHT-OF-WAY MONUMENT (FOUND)
 - △ = 1/2" IRON PIPE W/ TRIMBLE (FOUND)
 - ⊞ = #4 REBAR W/ 'SAVOY' CAP (FOUND)
 - = 3/4" IRON PIPE (FOUND)
- (M) = MEASURED
(D) = DESCRIBED
(CM) = CALCULATED PER MEASURED INFO
(CD) = CALCULATED PER DESCRIBED INFO
(CQ) = CALCULATED PER QUARTER SECTION MEASUREMENTS

State of Kansas) SS We, Baughman Company, P.A., Surveyors in
Sedgwick County) aforesaid county and state do hereby certify that we have surveyed and
platted "DEWITT 5TH ADDITION", Wichita, Sedgwick County, Kansas and that
the accompanying plat is a true and correct exhibit of the property
surveyed, described as follows: Beginning at the northwest corner of the
west half of the Southwest Quarter of Section 35, Township 27 South,
Range 1 West of the Sixth Principal Meridian, Sedgwick County, Kansas;
thence east, 1250.9 feet, more or less, to a point 49.5 feet west of the
east line of said west half; thence south, 348 feet; thence west, 1253
feet, more or less, to the west line of the said Southwest Quarter; thence
north, 348 feet to the place of beginning, except the west 50 feet for
road, and except that portion condemned in Case A-31849 described as:
Beginning at a point on the half section line, 521.5 feet east from the
west quarter corner of said Section 35; thence N89°23'E, 729.4 feet to
the west right-of-way of the Protection Drainage District; thence along
said west right-of-way described by the following bearing and distance:
S07°1'W, 348 feet; thence S89°23'W, 729.25 feet; thence north, 347.91
feet to the point of beginning.

Existing public easements and dedications
being vacated by virtue of K.S.A. 12-512b.
Baughman Company, P.A.

Michael G. Coarey, Surveyor

Know all men by these presents that we,
the undersigned, have caused the land in the surveyors certificate to be
platted into a Lot and a Block, to be known as "DEWITT 5TH ADDITION",
Wichita, Sedgwick County, Kansas. The sidewalk and utility easement is
herby granted as indicated for construction and maintenance of a public
sidewalk and for the construction and maintenance of all public utilities.
Access controls shall be as depicted on the face of the plat and are
herby granted to the City of Wichita, Kansas. The permitted opening
locations shall be as determined by the City Engineer of the City of
Wichita, Kansas.

DeWitt Land Company, Inc. a/k/a
DeWitt Land Co., Inc., a Kansas corporation

Michael D. DeWitt, President
Michael D. DeWitt

State of Kansas) SS The foregoing instrument acknowledged before
Sedgwick County) me, this 14th day of November, 2012, by Michael D. DeWitt,
President of the DeWitt Land Company, Inc., a/k/a DeWitt Land Co., Inc., a
Kansas corporation, on behalf of the corporation.

Judith M. Terhune, Notary Public
JUDITH M. TERHUNE
My App't. Exp. 11-7-13

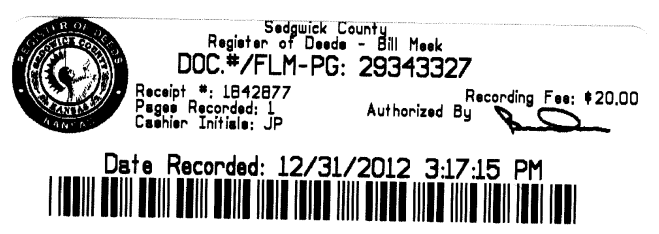
We, the undersigned, holders of a mortgage on
the above described property, do hereby consent to this plat of "DEWITT
5TH ADDITION", Wichita, Sedgwick County, Kansas.

Equity Bank

Jeremy Rainey, VP
JEREMY RAINNEY

State of Kansas) SS The foregoing instrument acknowledged be-
Sedgwick County) fore me, this 14 day of November, 2012, by Jeremy Rainey,
VP of Equity Bank, on behalf of the bank.

Paula McNutt, Notary Public
PAULA MCNUTT
My App't. Exp. 4/17/2014



This plat of "DEWITT 5TH ADDITION", Wichita,
Sedgwick County, Kansas has been submitted to and approved by the
Wichita-Sedgwick County Metropolitan Area Planning Commission, Wichita,
Kansas.
Dated this 1st day of November, 2012.
Wichita-Sedgwick County Metropolitan Area Planning Commission

David Dennis, Chair

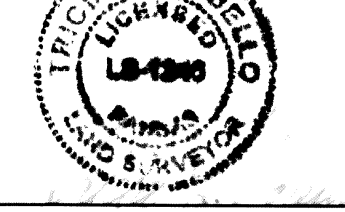
John L. Schlegel, Secretary

This plat approved and all dedications
shown hereon accepted by the City Council of the City of Wichita,
Kansas, this 18 day of December, 2012.

Carl Brewer, Mayor

Karen Sublett, City Clerk

Reviewed in accordance with K.S.A. 58-2005
on this day of



Tricia L. Robella, L.S. #1246
Deputy County Surveyor
Sedgwick County, Kansas

Entered on transfer record this 28th
day of December, 2012.

Kelly B. Arnold, County Clerk

State of Kansas) SS This is to certify that this plat has been
Sedgwick County) filed for record in the office of the Register of Deeds, this 31st day
of December, 2012, at o'clock P.M.; and is duly recorded.
3:17:16

Bill Meek, Register of Deeds

Tonya Buckingham, Deputy

NOTE:
A drainage plan has been developed for this subdivision and is
on file with the City of Wichita, Kansas. Drainage intent shall
remain as depicted or as modified with the approval of the
City Engineer of the City of Wichita, Kansas. No obstructions
which impede the flow of this drainage plan shall be allowed.

Baughman Company, P.A.
315 Ellis St., Wichita, KS 67211 F 316-262-2271 F 316-262-0149
Baughman
ENGINEERING | SURVEYING | PLANNING | LANDSCAPE ARCHITECTURE