

Raleigh

MH 5650-249  
Not Found / Buried  
Adjust MH to Grade (6" to 12")(est.)  
Replace MH Frame & Cover  
Depth unknown

MH 5650-242  
2513 N. Poplar  
Adjust MH to Grade (<6")  
Replace MH Frame & Cover  
Approx MH depth = 12.0 ft

MH 5650-241  
2468 N Grove  
Replace MH Frame & Cover  
Remove & Replace MH Bench & Invert  
Construct Outside Drop (from NE)  
Approx MH depth = 12.7 ft

MH 5650-240  
2455 N. Poplar  
Replace MH Frame & Cover  
Remove & Replace MH Bench & Invert  
Construct Outside Drop  
Approx MH depth = 15.2 ft

MH 5650-239  
2437 N. Poplar  
Replace MH Frame & Cover  
Remove & Replace MH Bench & Invert  
Construct Outside Drop  
Approx MH depth = 16.7 ft

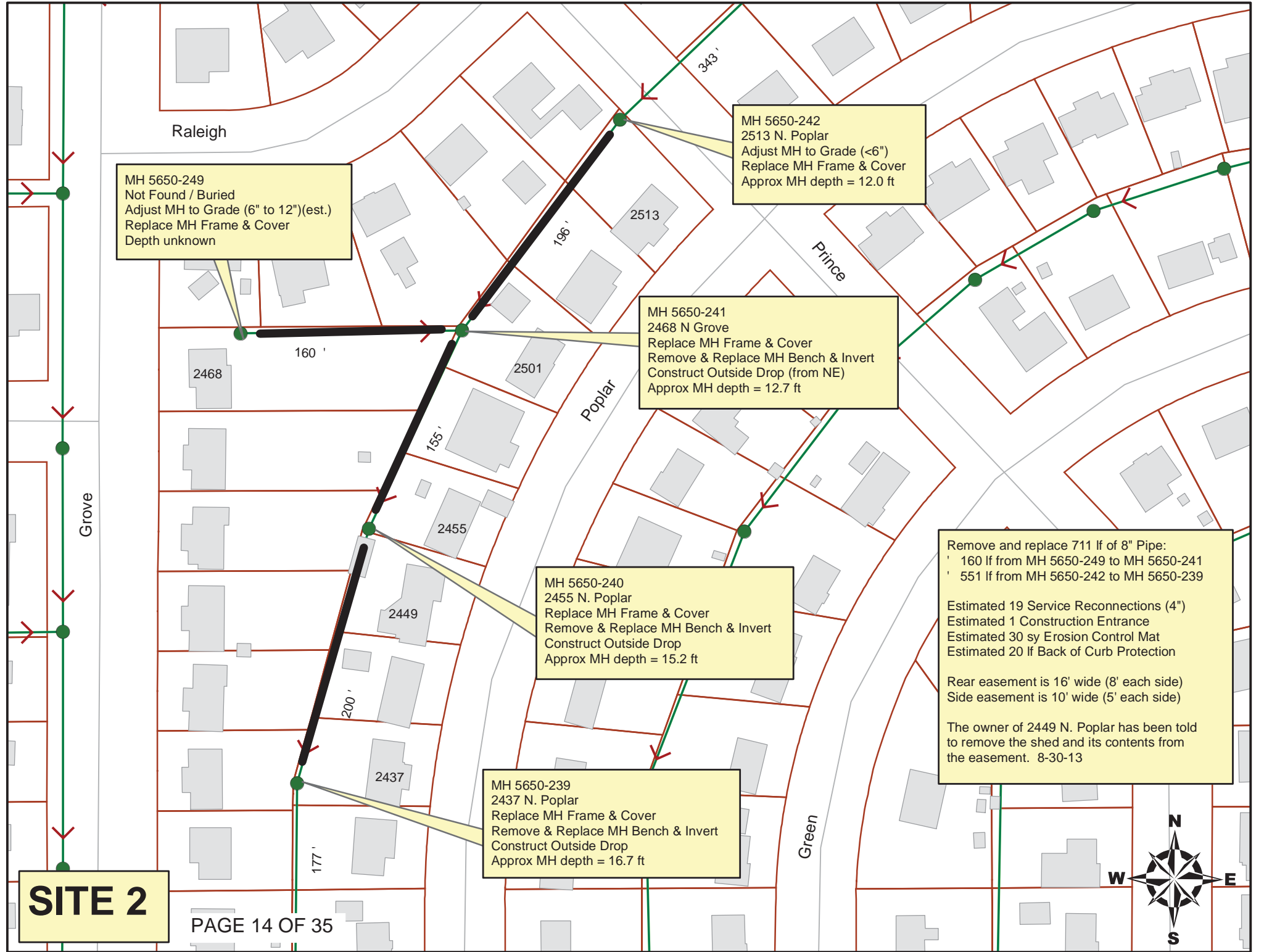
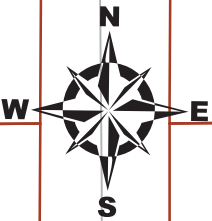
Remove and replace 711 lf of 8" Pipe:  
160 lf from MH 5650-249 to MH 5650-241  
551 lf from MH 5650-242 to MH 5650-239

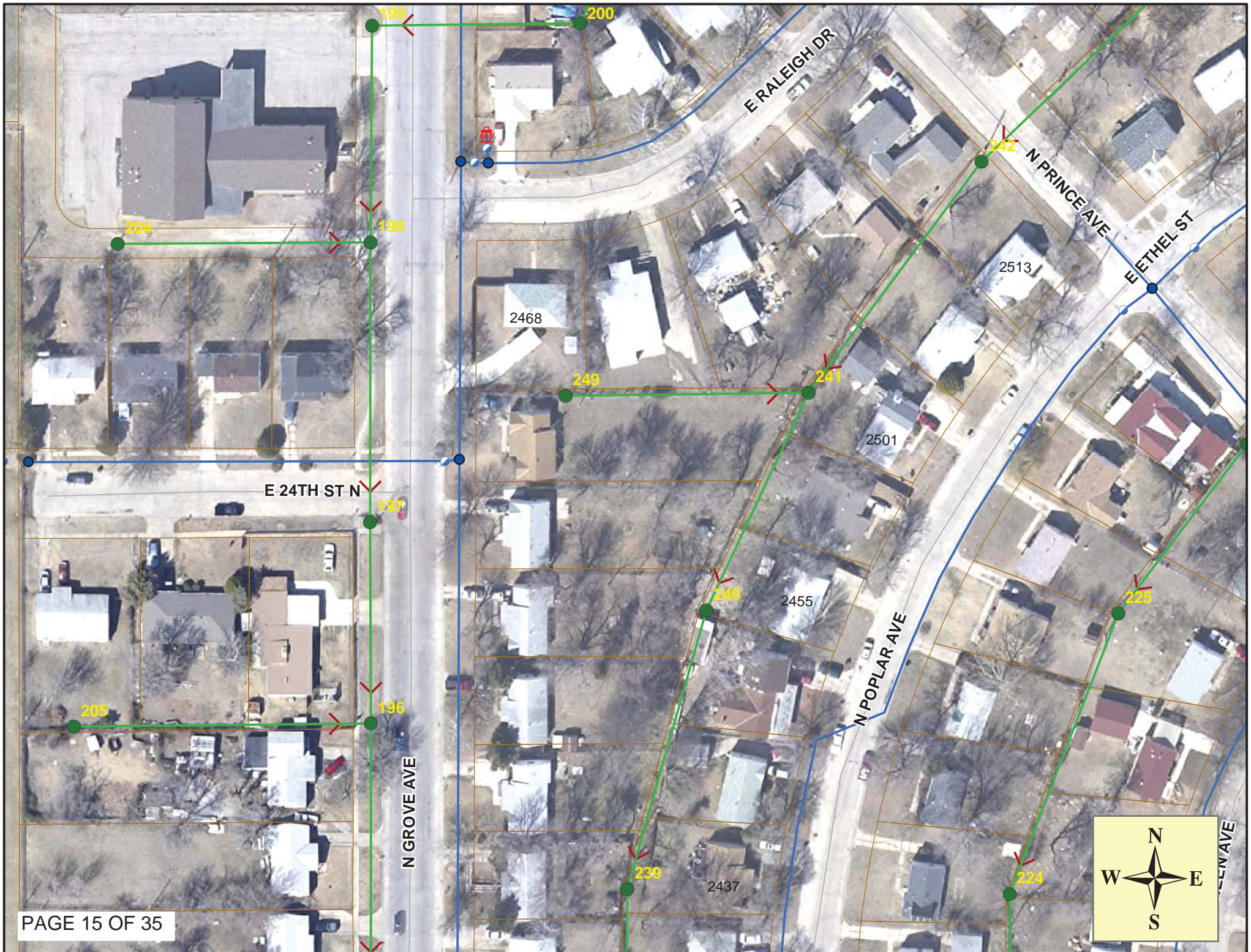
Estimated 19 Service Reconnections (4")  
Estimated 1 Construction Entrance  
Estimated 30 sy Erosion Control Mat  
Estimated 20 lf Back of Curb Protection

Rear easement is 16' wide (8' each side)  
Side easement is 10' wide (5' each side)

The owner of 2449 N. Poplar has been told  
to remove the shed and its contents from  
the easement. 8-30-13

**SITE 2**







# Television Inspection Master Report

11/25/2009

7:34 AM

US Structure: 5650-242      2513 N POPLAR ST      Date Insp: 10/6/2009      Basin: EC02D  
 DS Structure: 5650-241      2468 N GROVE ST      Dir Televised: Upstream To Downstream

**Pipe Information**

Shape: Round      Length Status:      Project No.: G-027  
 Dia/Ht: 8      Material: VCP      Index:  
 Length: 195.8      Slope: 0.400      Surface:

**Inspection Information**

Crew: 692      Percent Full:      DVD #0523  
 Weather: Cloudy      Purpose: TV Existing Line      Tape ID:  
 Counter Start:

Obs. #	VTR Counter	Distance	Location	Description	Rating	Obsrvd (gpm)	Ratings			Remain (gpm)
							Est. (gpm)	Struct	Clean	
1		0.0		5650-242 US Manhole	1		0.000	0	0	0.000
2		6.0		Grease	1		0.000	0	0	0.000
3		26.6		Grease	1		0.000	0	0	0.000
4		29.4		Grease	1		0.000	0	0	0.000
5		41.3		Broken Pipe	3		0.010	60	0	0.010
6		44.4		Broken Pipe	3		0.010	60	0	0.010
7		47.5		Broken Pipe	3		0.010	60	0	0.010
8		50.4		Broken Pipe	4		0.030	78	0	0.030
9		53.6		Broken Pipe	3		0.010	60	0	0.010
10		56.3		PVC Break-In Conn	5		0.010	400	0	0.010
2529 E RALEIGH										
11		60.9		Wye Service	4		0.000	60	0	0.000
2513 N POPLAR										
12		65.3		Broken Pipe	3		0.010	60	0	0.010
13		77.8	Cleaner turned on due to sag	Sag	3		0.000	5	0	0.000
14		77.8		Sag	3		0.000	5	0	0.000
15		86.1		Sag	1		0.000	1	0	0.000
16		86.1		Sag	1		0.000	1	0	0.000
17		79.3		Broken Pipe	4		0.030	78	0	0.030
18		82.9		Broken Pipe	4		0.030	78	0	0.030
19		85.9		Broken Pipe	4		0.030	78	0	0.030
20		89.0	Cleaner turned off	Broken Pipe	3		0.010	60	0	0.010
21		92.2		Broken Pipe	3		0.010	60	0	0.010
22		111.3		Crack-Horizontal	3		0.004	5	0	0.004
23		126.5		PVC Break-In Conn	1		0.001	0	0	0.001
2507 N POPLAR										
24		128.0		PVC Break-In Conn	1		0.001	0	0	0.001
2523 E RALEIGH										
25		128.4		Broken Pipe / roots	4		0.030	78	0	0.030
26		131.6		Broken Pipe	4		0.030	78	0	0.030

# Television Inspection Master Report

11/25/2009

7:34 AM

US Structure: 5650-242                      2513 N POPLAR ST                      Date Insp: 10/6/2009                      Basin: EC02D  
 DS Structure: 5650-241                      2468 N GROVE ST                      Dir Televised: Upstream To Downstream

27	134.6		Broken Pipe	4	0.030	78	0	0.030
28	139.0		Sealed Off Wye / roots	4	0.000	0	0	0.000
(make sure this is not a second connection for 2517 Raleigh / root ball is too heavy to see a sealoff – LML)								
29	140.5		Broken Pipe	4	0.030	78	0	0.030
30	143.8		Broken Pipe	4	0.030	78	0	0.030
31	158.9		Broken Pipe	4	0.030	78	0	0.030
32	162.1		Broken Pipe	3	0.010	60	0	0.010
33	165.3		Broken Pipe	4	0.030	78	0	0.030
34	167.6		Sag	1	0.000	1	0	0.000
35	167.9		Sag	3	0.000	5	0	0.000
36	167.9		Broken Pipe	3	0.010	60	0	0.010
37	170.7		Broken Pipe	2	0.008	44	0	0.008
38	174.5		Sag	1	0.000	1	0	0.000
39	174.6		Sag	1	0.000	1	0	0.000
40	182.5		Roots	2	0.004	2	4	0.004
41	184.9		Break-In Conn	1	0.001	0	0	0.001
2501 N POPLAR								
42	185.8		Roots	1	0.002	1	1	0.002
43	184.6		Sag	1	0.000	1	0	0.000
44	186.6		Sag	4	0.000	10	0	0.000
45	189.4		Broken Pipe	5	0.060	100	0	0.060
46	190.1		Broken Pipe / roots	5	0.060	100	0	0.060
47	190.1		Sag	1	0.000	1	0	0.000
48	190.1		Sag	1	0.000	1	0	0.000
49	195.8	5650-241	DS Manhole	1	0.000	0	0	0.000

Camera does not get into the downstream manhole. Looks like an offset joint, broken pipe and roots. Holds paper. – LML

Latest televising performed in July, 2013. Camera still didn't get into the downstream manhole. Pipe is in poor condition. - LML

May need an outside drop. - LML

# Television Inspection Master Report

11/25/2009

7:34 AM

US Structure: 5650-241      2468 N GROVE ST      Date Insp: 10/6/2009      Basin: EC02D  
 DS Structure: 5650-240      2455 N POPLAR ST      Dir Televised: Upstream To Downstream

**Pipe Information**

Shape: Round      Length Status:      Project No. : G-027  
 Dia/Ht: 8      Material: VCP      Index:  
 Length: 157.5      Slope: 0.400      Surface:

**Inspection Information**

Crew: 692      Percent Full:      Tape ID: DVD #0523  
 Weather: Cloudy      Purpose: TV Existing Line      Counter Start:

Obs. #	VTR Counter	Distance	Location	Description	Rating	Obsrvd (gpm)	Ratings			Remain (gpm)
							Est. (gpm)	Struct	Clean	
1		0.0		5650-241 US Manhole	1	0.000	0	0	0.000	
2		13.7		Sealed Off Wye	1	0.000	0	0	0.000	
3		16.8		Sealed Off Wye	1	0.000	0	0	0.000	
4		81.7		Sealed Off Wye	5	0.000	0	0	0.000	
				Ball of roots / cannot seal the sealoff - LML						
5		81.7		Break-In Conn	1	0.001	0	0	0.001	
	2461 N POPLAR									
6		84.6		Sealed Off Wye	1	0.000	0	0	0.000	
7		114.6		Sealed Off Wye	1	0.000	0	0	0.000	
8		126.3		Break-In Conn	1	0.001	0	0	0.001	
	2462 N GROVE									
9		131.3		Break-In Conn	5	0.010	400	0	0.010	
	2455 N POPLAR									
10		149.2		Broken Pipe	5	0.060	100	0	0.060	
				Invert is busted and sticking up at a joint. - LML						
11		153.0		DS Manhole	1	0.000	0	0	0.000	

May need an outside drop. - LML



# Television Inspection Master Report

11/25/2009

7:34 AM

US Structure: 5650-240      2455 N POPLAR ST      Date Insp: 10/6/2009      Basin: EC02D  
 DS Structure: 5650-239      2437 N POPLAR AVE      Dir Televised: Upstream To Downstream

**Pipe Information**

Shape: Round      Length Status:      Project No. : G-027  
 Dia/Ht: 8      Material: VCP      Index:  
 Length: 200.9      Slope: 0.400      Surface:

**Inspection Information**

Crew: 692      Percent Full:      Tape ID: DVD #0523  
 Weather: Sunny      Purpose: TV Existing Line      Counter Start:

Obs. #	VTR Counter	Distance	Location	Description	Rating	Obsrvd (gpm)	Ratings			Remain (gpm)
							Est. (gpm)	Struct	Clean	
1		0.0		5650-240 US Manhole	1	0.000	0	0	0.000	
2		19.8		Roots	1	0.002	1	1	0.002	
3		23.0		Sealed Off Wye	1	0.000	0	0	0.000	
4		35.1		Grease	1	0.000	0	0	0.000	
5		39.5		Break-In Conn	1	0.001	0	0	0.001	
2456 N GROVE										
6		40.4		Grease	1	0.000	0	0	0.000	
7		54.7		Break-In Conn / roots	5	0.010	400	0	0.010	
2449 N POPLAR										
8		58.7		Sealed Off Wye	1	0.000	0	0	0.000	
9		82.7		Sealed Off Wye	1	0.000	0	0	0.000	
10		88.0		Break-In Conn	1	0.001	0	0	0.001	
2450 N GROVE										
11		98.1		Sealed Off Wye	1	0.000	0	0	0.000	
12		130.3		Break-In Conn	2	0.002	0	0	0.002	
2443 N POPLAR										
13		134.0		Break-In Conn / roots	4	0.008	60	0	0.008	
2444 N GROVE										
14		148.3		Sealed Off Wye	1	0.000	0	0	0.000	
15		153.0		Sealed Off Wye	1	0.000	0	0	0.000	
16		187.8		Break-In Conn	2	0.002	0	0	0.002	
2437 N POPLAR										
17		189.4		Break-In Conn	3	0.004	2	0	0.004	
2438 N GROVE										
18		196.6		5650-239 DS Manhole	1	0.000	0	0	0.000	

Needs an outside drop, bench & invert. Looks like manhole surcharges too. - LML