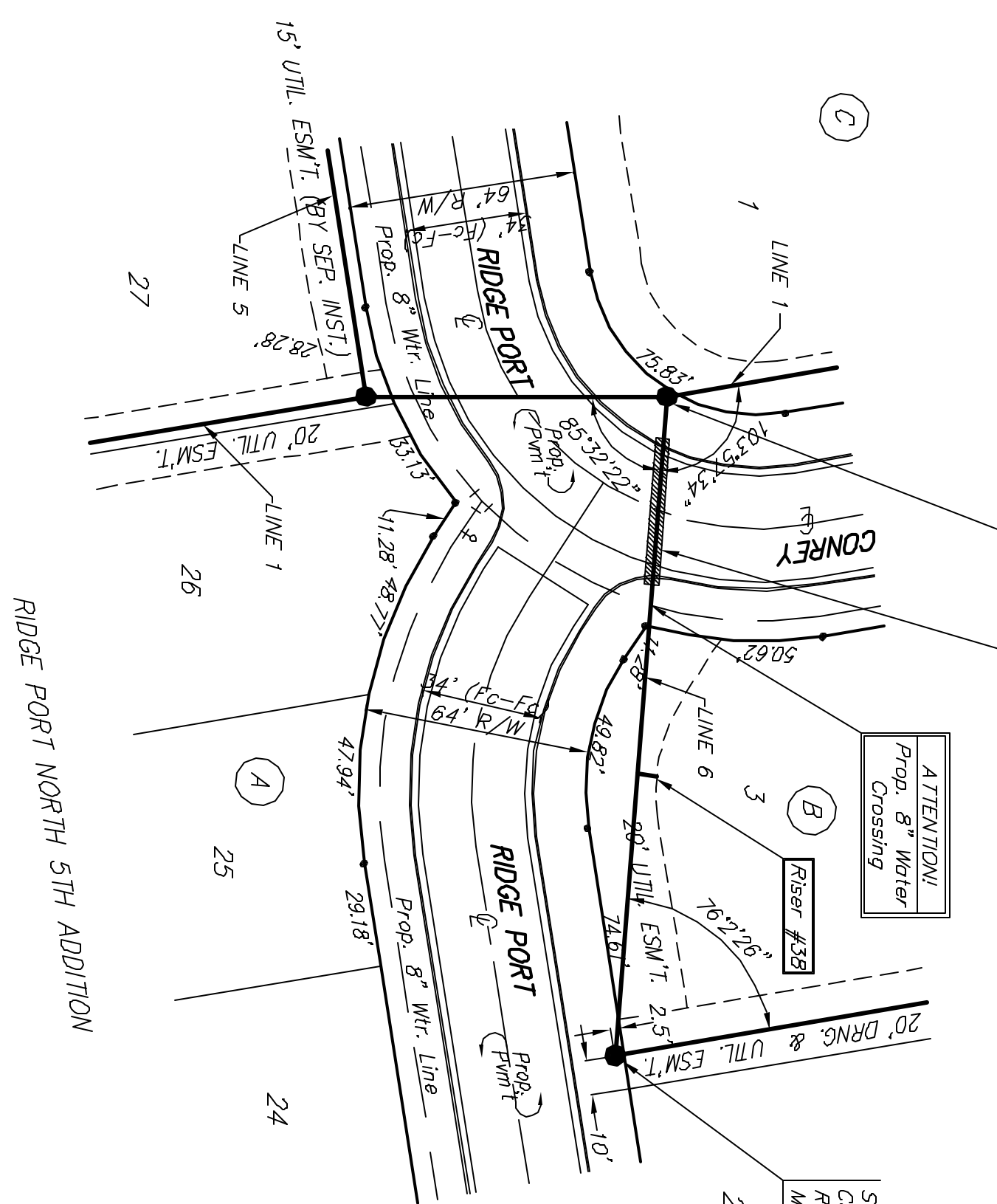


BENCHMARK:  
 "C" ON HUBBARD OF R.C.B.C.,  
 73' N. OF SE. COR. SE1/4, SEC. 28,  
 T26-S, R-1-W  
 ELEV. = 144.22 CITY DATUM

604 STEP BENCH IN H.P. 15' N. &  
 40' E. OF THE INTERSECTION OF 34TH ST. N.  
 AND EISENHOWER  
 ELEV. = 144.00 CITY DATUM

Sta. 0+00, Line 6  
 = Sta. 15+12.7, Line 1  
 Match Point

Scale: 1" = 40' Horizontal  
 1" = 5' Vertical  
 • = Iron

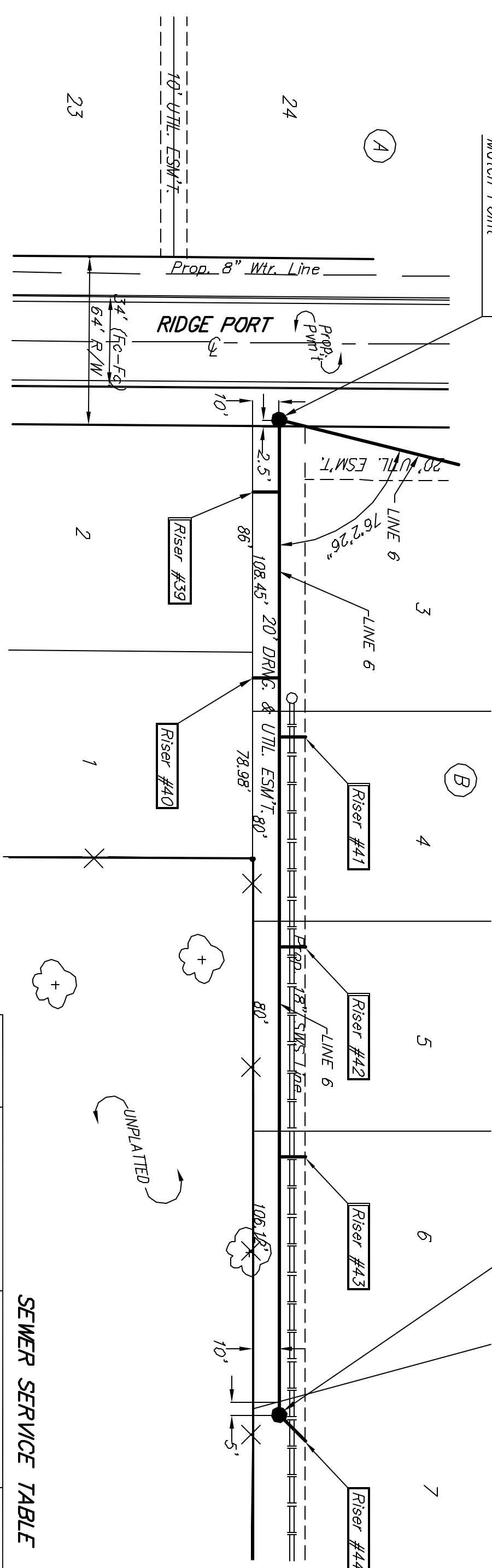


Sta. 1+86.5, Line 6  
 Const. std. manhole  
 Rim Elev. = 144.50  
 Match Point

Sta. 1+86.5, Line 6  
 Match Point

Sta. 5+65.8, End Line 6  
 Const. std. manhole  
 Rim Elev. = 144.00  
 1-4" Stub (SW)

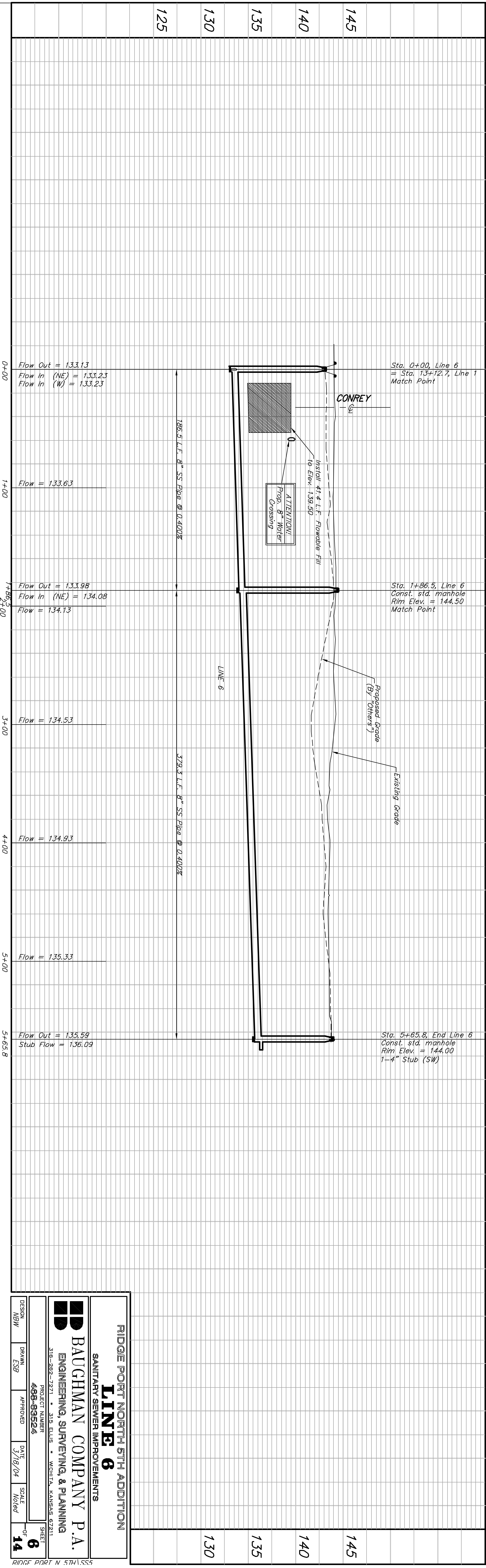
Scale: 1" = 40' Horizontal  
 1" = 5' Vertical  
 • = Iron



SEWER SERVICE TABLE

NUMBER	TYPE	LOCATION		STATION/ DIRECTION	FOR INFORMATION ONLY	
		LOT NO.	BLOCK NO.		APPROXIMATE LENGTH 4" PIPE	VERTICAL / HORIZONTAL
39	8" X 4" Tee Saddle	3	B	1+07/RT.	7'	6'
39	8" X 4" Tee Saddle	2	B	2+14/RT.	6'	10'
40	8" X 4" Tee Saddle	1	B	3+85/LL.	4'	10'
41	8" X 4" Tee Saddle	4	B	3+08/RT.	4'	10'
42	8" X 4" Tee Saddle	5	B	3+88/LL.	4'	10'
43	8" X 4" Tee Saddle	6	B	4+58/RT.	4'	10'
44	4" Stub w/ Riser	7	B	5+55.8/LL.	4'	15'

NOTE: Vertical Riser Pipe shall be extended to 2' minimum above ground water elevation and 4' maximum above proposed ground elevation. Contractor shall use method B for riser construction. See Detail, Sheet 10.



RIDGE PORT NORTH 5TH ADDITION  
 SANITARY SEWER IMPROVEMENTS  
**LINE 6**

**BAUGHMAN COMPANY P.A.**  
 ENGINEERING, SURVEYING, & PLANNING  
 318-282-7271 • 318 ELLIS • WICHITA, KANSAS 67211

PROJECT NUMBER: 488-95224  
 SHEET: 6 OF 14  
 DESIGN: MBW  
 DRAWN: CSB  
 APPROVED: [Signature]  
 DATE: 3/18/04  
 SCALE: Noted