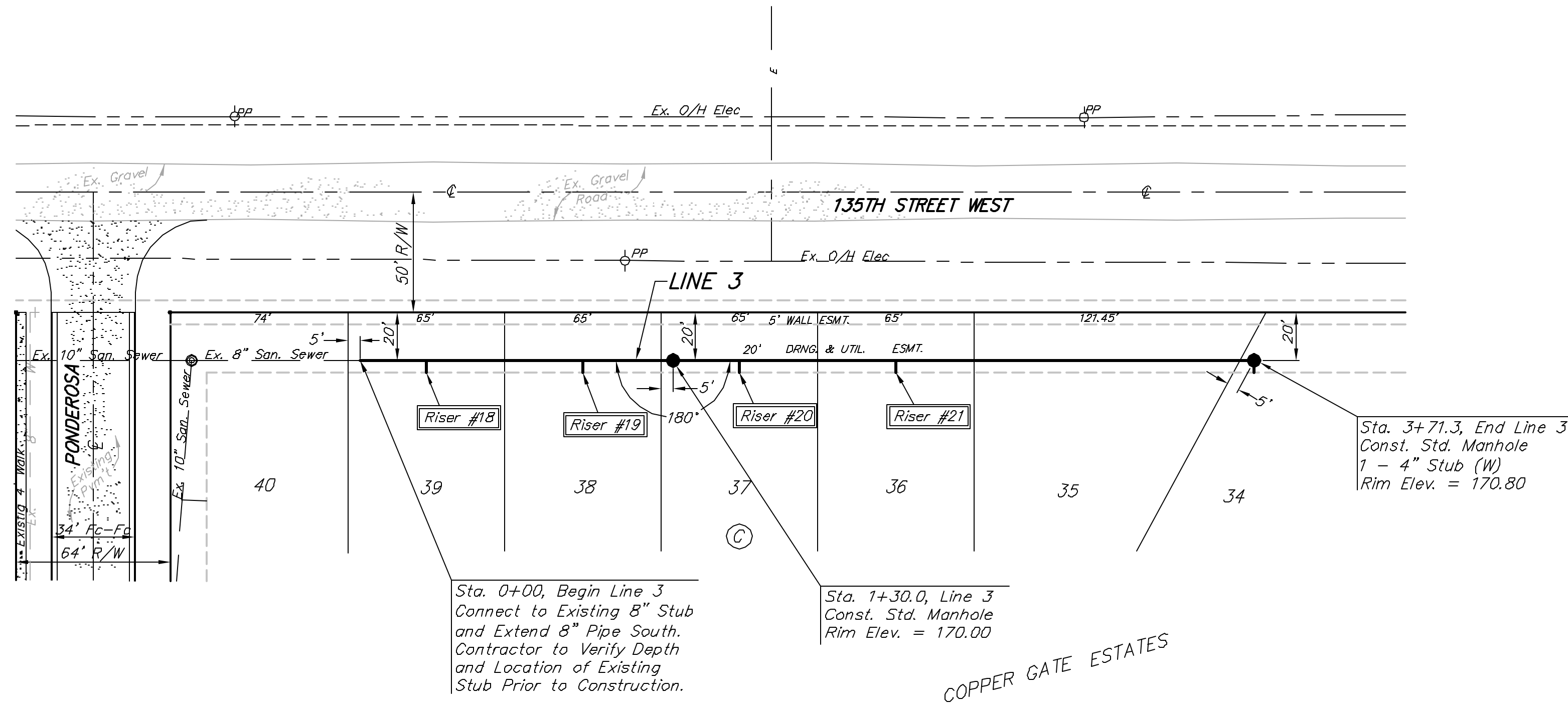


BENCHMARK:
 City of Wichita benchmark at
 the SE corner of intersection
 of 135th Street West and 13th
 Street North.
 Elev. = 167.83 (City Datum)

Brass Benchmark Disc
 Adjacent to Fire Hydrant at E.
 End of E. Curb Return of
 Ponderosa & Ponderosa Ct.
 Elev. = 170.96 (City Datum)



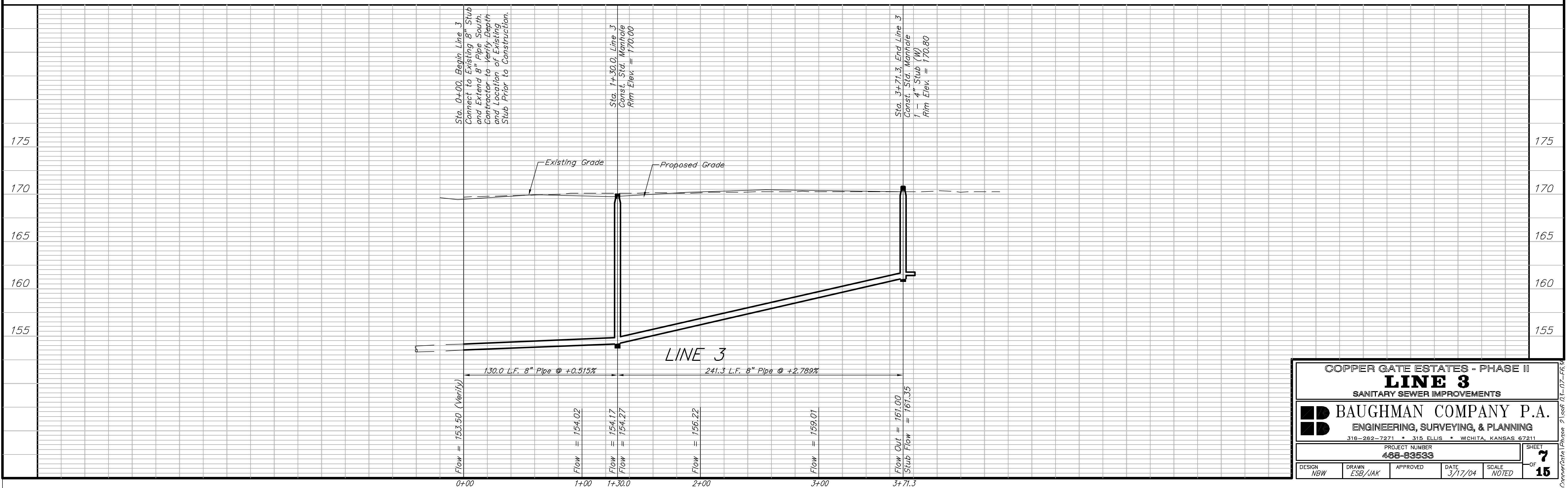
Scale: 1" = 40' Horizontal
 1" = 5' Vertical
 • = Iron



SEWER SERVICE TABLE

NUMBER	TYPE	LOCATION				FOR INFORMATION ONLY	
		LOT NO.	BLOCK NO.	LINE NO.	STATION \ DIRECTION	APPROXIMATE LENGTH 4" PIPE VERTICAL	HORIZONTAL
18	8" X 4" Tee Saddle	39	C	3	0+28/Rt.	12'	5.0'
19	8" X 4" Tee Saddle	38	C	3	0+93/Rt.	12'	5.0'
20	8" X 4" Tee Saddle	37	C	3	1+58/Rt.	11'	5.0'
21	8" X 4" Tee Saddle	36	C	3	2+23/Rt.	9'	5.0'

NOTE: Vertical Riser Pipe shall be extended to 2' minimum above ground water elevation and 4' maximum below proposed ground elevation.



COPPER GATE ESTATES - PHASE II
LINE 3
 SANITARY SEWER IMPROVEMENTS

BAUGHMAN COMPANY P.A.
 ENGINEERING, SURVEYING, & PLANNING
 316-262-7271 • 315 ELLIS • WICHITA, KANSAS 67211

PROJECT NUMBER
468-83533

DESIGN NBW DRAWN ESB/JAK APPROVED DATE 3/17/04 SCALE NOTED SHEET 7 OF 15