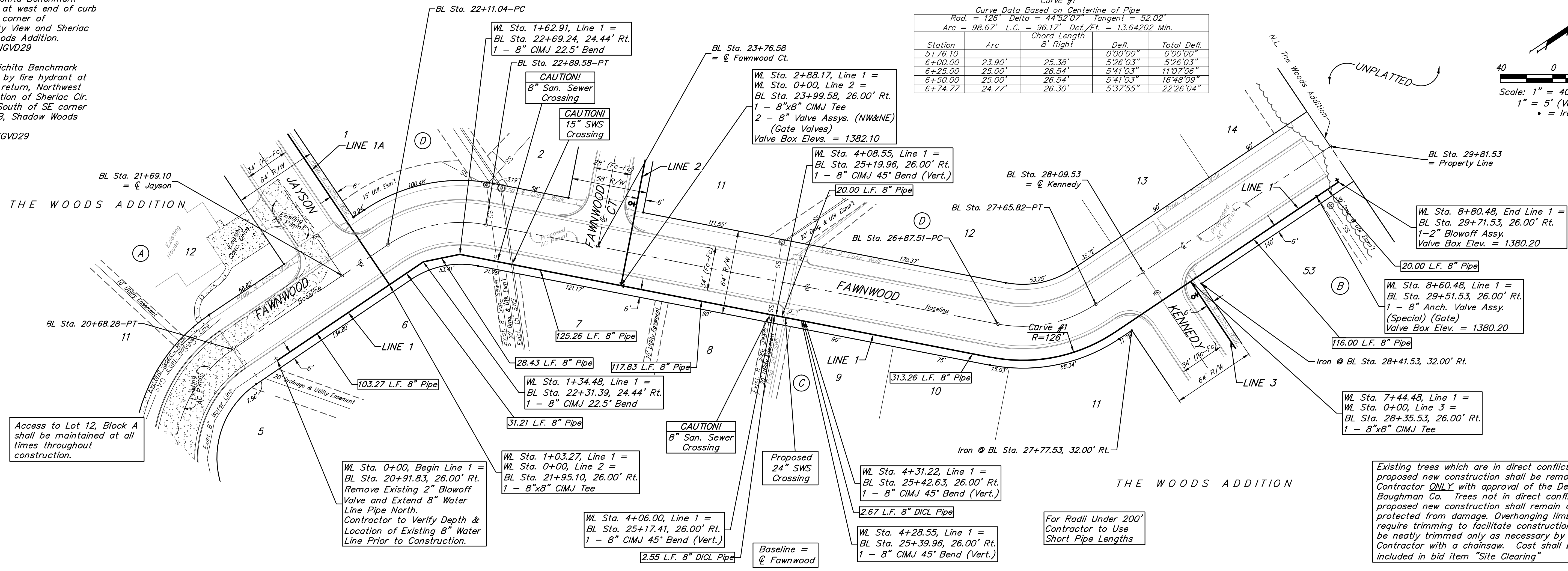
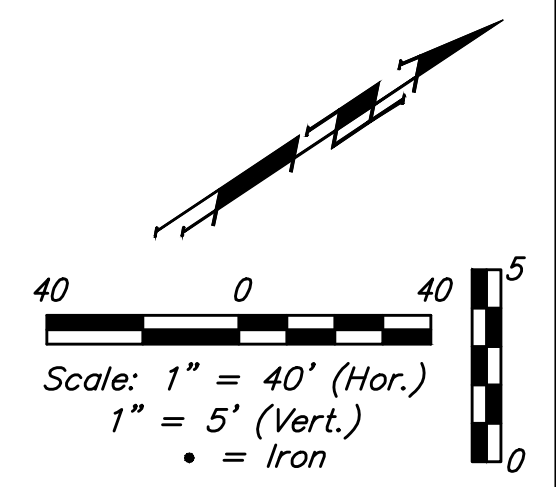


Benchmarks:  
 BM #1: City of Wichita Benchmark  
 Disc, top of curb at west end of curb  
 return, Northwest corner of  
 intersection of City View and Sheriac  
 Cir. in Shadow Woods Addition.  
 Elev. = 1386.66 NGVD29

BM #2: City of Wichita Benchmark  
 Disc, Top of curb by fire hydrant at  
 west end of curb return, Northwest  
 corner of intersection of Sheriac Cir.  
 and Sheriac Ct., South of SE corner  
 of Lot 13, Block B, Shadow Woods  
 Addition.  
 Elev. = 1392.11 NGVD29

Curve #1  
 Curve Data Based on Centerline of Pipe  
 Rad. = 126' Delta = 44°52'07" Tangent = 52.02'  
 Arc = 98.67' L.C. = 96.17' Def./Ft. = 13.64202 Min.

Station	Arc	Chord Length	Defl.	Total Defl.
5+76.10			0°00'00"	0°00'00"
6+00.00	23.90'	25.38'	5°26'03"	5°26'03"
6+25.00	25.00'	26.54'	5°41'03"	11°07'06"
6+50.00	25.00'	26.54'	5°41'03"	16°48'09"
6+74.77	24.77'	26.30'	5°37'55"	22°26'04"



Access to Lot 12, Block A shall be maintained at all times throughout construction.

WL Sta. 0+00, Begin Line 1 =  
 BL Sta. 20+91.83, 26.00' Rt.  
 Remove Existing 2" Blowoff  
 Valve and Extend 8" Water  
 Line Pipe North.  
 Contractor to Verify Depth &  
 Location of Existing 8" Water  
 Line Prior to Construction.

WL Sta. 1+03.27, Line 1 =  
 WL Sta. 0+00, Line 2 =  
 BL Sta. 21+95.10, 26.00' Rt.  
 1 - 8"x8" CIMJ Tee

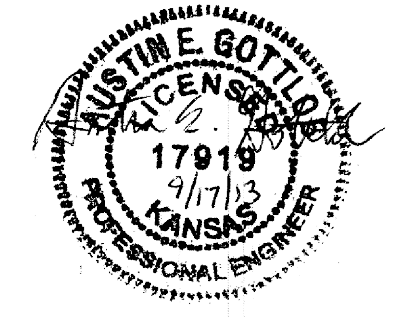
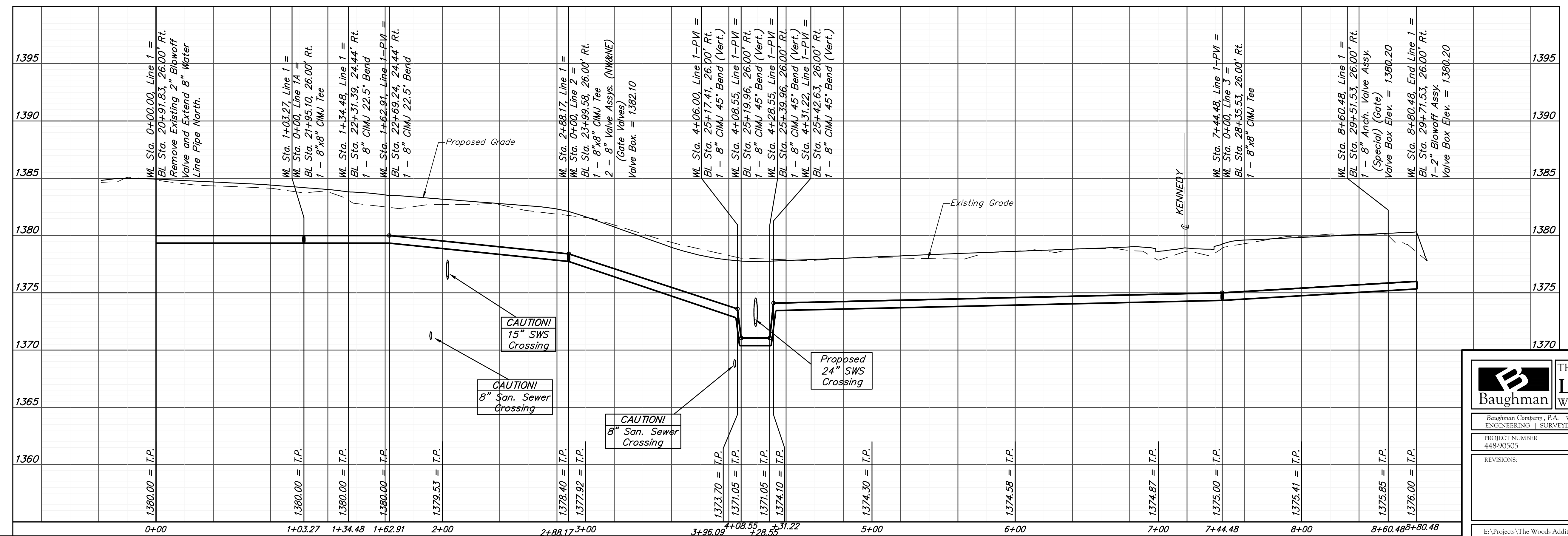
WL Sta. 4+06.00, Line 1 =  
 BL Sta. 25+17.41, 26.00' Rt.  
 1 - 8" CIMJ 45° Bend (Vert.)

WL Sta. 4+31.22, Line 1 =  
 BL Sta. 25+42.63, 26.00' Rt.  
 1 - 8" CIMJ 45° Bend (Vert.)

WL Sta. 4+28.55, Line 1 =  
 BL Sta. 25+39.96, 26.00' Rt.  
 1 - 8" CIMJ 45° Bend (Vert.)

For Radii Under 200'  
 Contractor to Use  
 Short Pipe Lengths

Existing trees which are in direct conflict with proposed new construction shall be removed by the Contractor ONLY with approval of the Developer or Baughman Co. Trees not in direct conflict with proposed new construction shall remain and be protected from damage. Overhanging limbs which require trimming to facilitate construction are to be neatly trimmed only as necessary by the Contractor with a chainsaw. Cost shall be included in bid item "Site Clearing"



**Baughman** THE WOODS ADDITION - PHASE 4  
**LINE 1**  
 Water Distribution System

Baughman Company, P.A. 315 Ellis St. Wichita, KS 67211 P 316-262-7271 F 316-262-0149  
 ENGINEERING | SURVEYING | PLANNING | LANDSCAPE ARCHITECTURE

PROJECT NUMBER: 448-90505 DESIGN: AEG DRAWN: JAK  
 REVISIONS: APPROVED: DATE: 9/17/13  
 SCALE: Noted SHEET: 4 OF 13

E:\Projects\The Woods Addition\Phase 4\Wtr. 1305-E908\01\_WTR PLANS.dwg