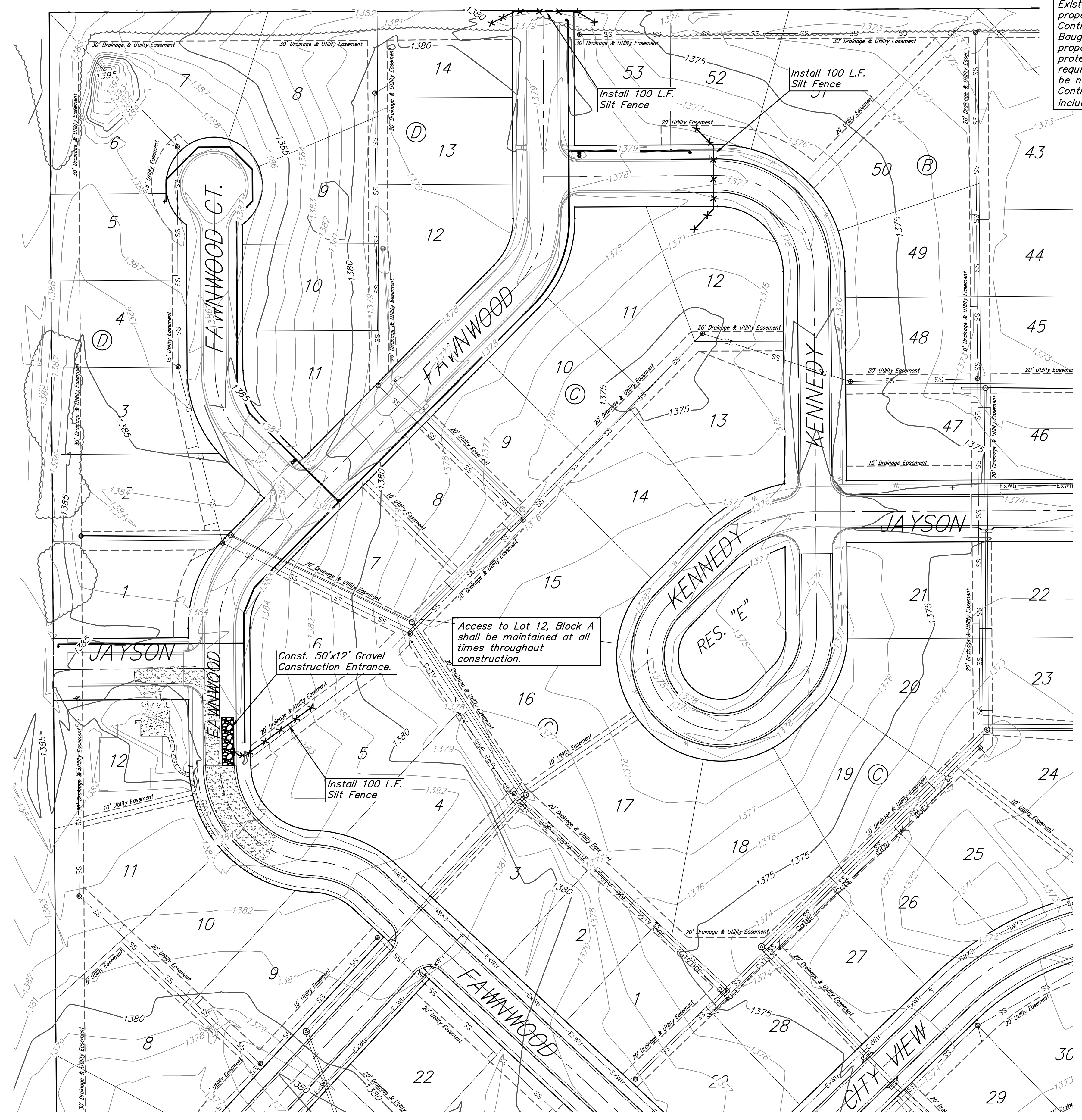


Existing trees which are in direct conflict with proposed new construction shall be removed by the Contractor **ONLY** with approval of the Developer or Baughman Co. Trees not in direct conflict with proposed new construction shall remain and be protected from damage. Overhanging limbs which require trimming to facilitate construction are to be neatly trimmed only as necessary by the Contractor with a chainsaw. Cost shall be included in bid item "Site Clearing"



EROSION CONTROL MEASURE	INSTALL	MAINTAIN	REMOVE
BACK OF CURB PROTECTION (LF)	0	0	0
CONSTRUCTION ENTRANCE (EA)	1	0	0
CURB INLET BARRIER (EA)	0	0	0
DITCH CHECK (EA)	0	0	0
DROP INLET PROTECTION (EA)	0	0	0
EROSION CONTROL (LS)	0	0	0
EROSION CONTROL BERM (LF)	0	0	0
SILT FENCE (LF)	300	0	0
EROSION CONTROL MAT (SY)	0	0	0

Quantities are for information only contractor shall verify quantities per final bid quantity sheet.
 * All existing BMPs including Construction Entrance, Sediment Barriers, Silt Fence, Cut-off Trench, and Erosion Control Mat shall be maintained and repaired if necessary. Replacement or removal of erosion control measures to be paid for by L.S. Bid item "Maintain Existing Erosion Control BMPs"

— x — x — x — x — SILT FENCING
 — 1357 — Existing Grade Contours

		THE WOODS ADDITION - PHASE 4 Erosion Control Water Distribution System	
		<small>Baughman Company, P.A. 315 Ellis St. Wichita, KS 67211 P 316-262-7271 F 316-262-0149 ENGINEERING SURVEYING PLANNING LANDSCAPE ARCHITECTURE</small>	
PROJECT NUMBER 448-90505	DESIGN AEG	DRAWN JAK	DATE 9/17/13
REVISIONS:	APPROVED Noted SHEET	SCALE Noted SHEET 7 OF 13	

