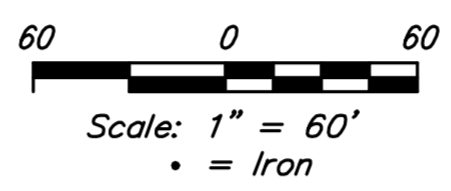
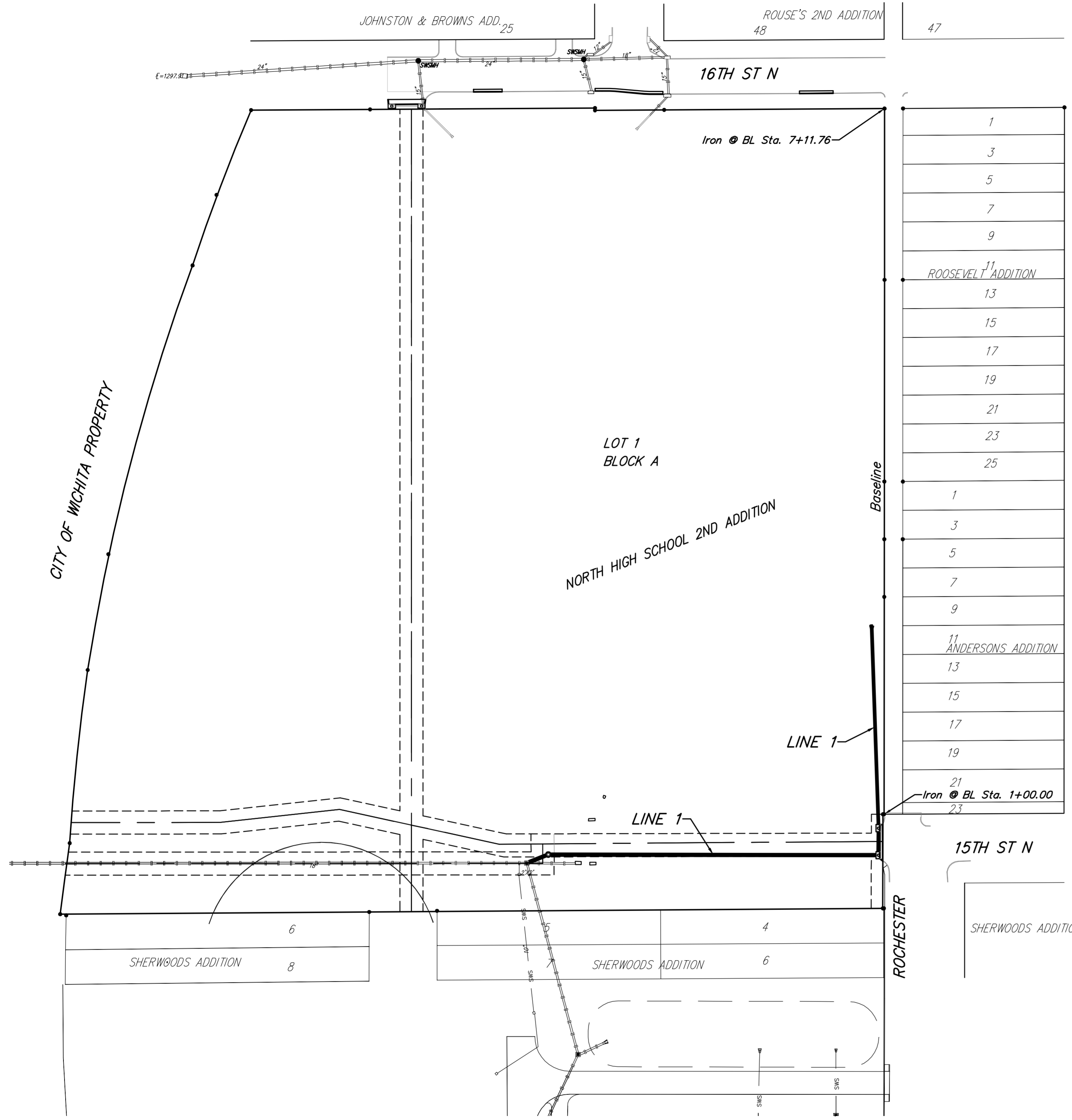


AS BUILT PLANS

Contractor: Mies
 Inspector: Don Eddingfield, Baughman Co.
 pdf's by: KEK, 9/27/13

Stormwater Drain Improvements to serve North High School 2nd Addition Private Project: 177 PPD (607861) CITY OF WICHITA, KANSAS

Gary Janzen, P.E. City Engineer
 JUNE 2013



BENCHMARK

"□" CUT TOP OF CURB 250± WEST AND 41± NORTH OF THE SOUTHEAST CORNER OF LOT 1, BLOCK A, NORTH HIGH 2ND ADDITION.
 ELEVATION = 1307.38 NAVD88 (1306.91 NAVD29)
 "□" CUT TOP OF CURB AT END OF RETURN, 7' SOUTH OF FIRE HYDRANT, SW CORNER OF 15TH AND ROCHESTER.
 ELEVATION = 1307.79 NAVD88 (1307.32 NAVD29)
 "□" CUT TC, 10' OF WEST END OF EX. INLET, SW CORNER 16TH & ARKANSAS.
 ELEVATION = 1307.79 NAVD88 (1307.32 NAVD29)

SHEET INDEX:

Title Sheet	1
Line 1 Plan/Profile	2-3
ERU Plan	4
PPD Erosion Control Plan	5
Reference Grading Plan	6
Reference Erosion Control Plan	7

* (Details available upon request)

APPROVED AS NOTED
 BY CITY ENGINEER OF WICHITA

Engineering: *[Signature]* 6/19/13
 Stormwater: *[Signature]* 6-24-13

NOTE TO CONTRACTORS
 Installation, inspection and testing for this project is to be provided by a Licensed Consulting Engineering Firm under contract with the Owner/Developer. Said inspection to be in accordance with the City of Wichita standard construction engineering practices and certified by a Licensed Professional Engineer. No work shall be performed in dedicated easements or public right-of-way by the Contractor without such inspection nor shall any work be commenced without written authorization by the City Engineer. All Construction and Materials shall comply with the City of Wichita Specifications and Standards (on file and available in the City Engineer's Office).

GENERAL NOTES

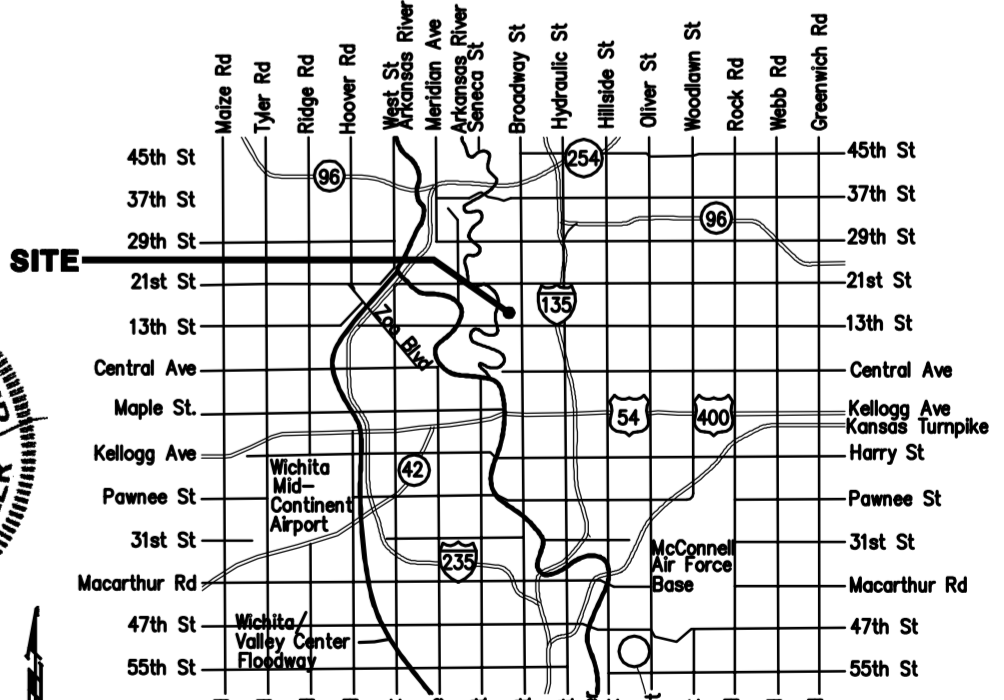
- Contractor will be required to provide notice to utility companies a minimum of forty-eight (48) hours prior to any excavation, as follows:
 Kansas One-Call 687-2470
 The Contractor must notify the following in case of an emergency:
 Cox Communications 262-4270
 Kansas Gas Service 1-888-482-4950
 Westar Energy 383-8650
 Black Hills Energy (Gas) 1-800-303-0357
 ATT 268-2245
 City of Wichita Water Dept. 268-4563
 City of Wichita Sewer Maint. 268-4024
 City of Wichita Storm Sewer Maint. 268-4090
 City of Wichita Traffic Maint. 268-4034
- Utility service lines, poles, valve boxes, meters, and etcetera are to be adjusted as necessary by others prior to construction unless the plans specifically call for their adjustment by the Contractor or unless the plans specifically identify a utility to be adjusted by its owner during construction. Existing utilities and their location, as shown on the plans, represent the best information obtainable for design. The Contractor will be required to work around existing utilities within the right-of-way which do not conflict with proposed construction.
- All disturbed R/W areas not intended for pavement or sidewalk construction shall be seeded with Kansas Premium Fescue Blend at a rate of 8 lb./1000 Sq. Ft., fertilized with a 16-20-6 ratio at a rate of 4 lb./1000 Sq. Ft., and mulched with Prairie Hay at a rate of 92 lb./1000 Sq. Ft. Mulch shall be "patted" with forks or punched into soil to reduce loss due to wind.
- Rubble from the removal of miscellaneous structures and excess excavation which is to be wasted shall be disposed of on sites to be provided by the Contractor. These sites shall be approved by the Engineer as to suitability, appearance and site location. Locations, in the opinion of the Engineer, that will leave an unsightly appearance will not be approved. All disposal sites must be approved by the Kansas Department of Health and Environment. Material either stockpiled or disposed of in a flood plain would require a Kansas State Board of Agriculture permit. Any material dumped in waters of the United States or wetlands is subject to U.S. Corps. of Engineers permitting regulations. Any material buried or stockpiled beyond approved construction limits would require additional archaeological investigations unless buried in a previously approved borrow location.
- Contractor to remove concrete sidewalk to the nearest construction joint if within 3' of joint. Saw cut if over 3' from joint. Removal and replacement of pavement shall not be paid for directly, but shall be considered incidental to other items in the project.
- Contractor shall furnish the inspector with a copy of the manufacturer's certification for any pipe used on this project after completion of pipe installation. The engineer will not certify the project to the city until pipe certification has been received.
- Trees and shrubs in public right-of-way which are in direct conflict with proposed new construction shall be removed by the Contractor with the Engineer's approval. Trees and shrubs which are not in direct conflict with proposed new construction shall be saved and protected from damage.
- All sewer lines and appurtenances shall be installed in accordance with the most recent edition of City of Wichita, Kansas Standard Specifications for the Construction of City Projects.
- Contractor shall not start work on the project until the project inspector is assigned to the project and is present on the site. Contractor shall not start on the project until all necessary bonds and permits have been obtained. Bonds may include but are not limited to Statutory, Performance & Maintenance. Any work done without inspection will be required to be uncovered for inspection.
- The Baseline for this project is the east line of Lot 1, Block A, North High School 2nd Addition.

SITE ERU INFORMATION

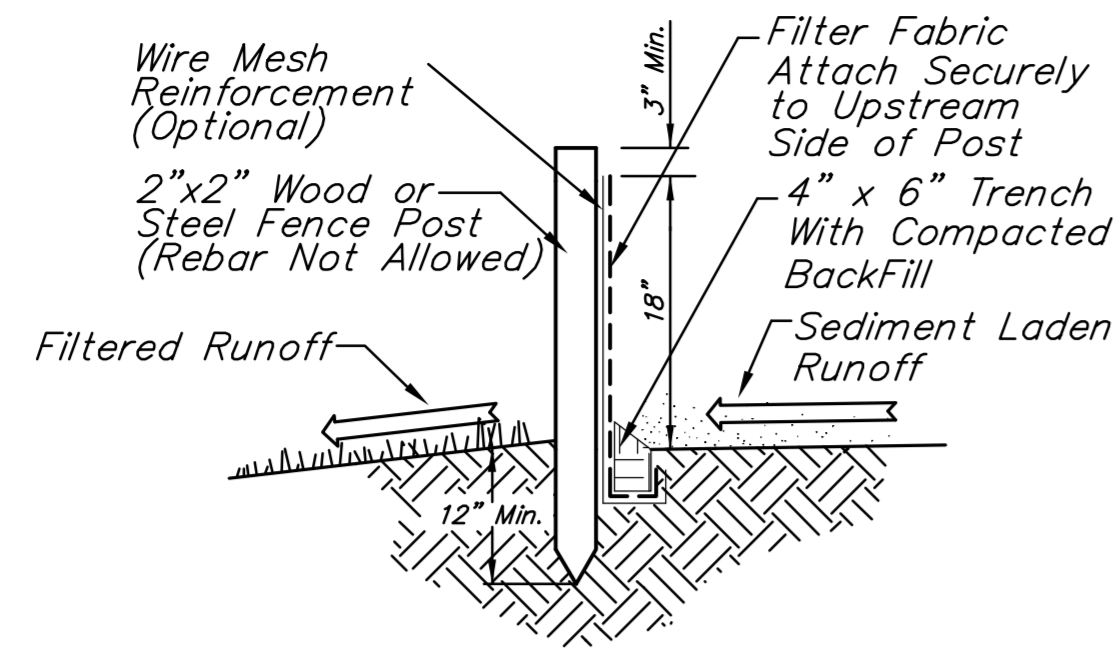
Total Area: ±456,000 sq. ft. (10.46 acres)
 Disturbed Area: 450,000 sq. ft. (10.33 acres)
 Existing Impervious Area Removed (by "Others")
 84,600 sq. ft. (Street & Concrete Only)
 190,000 sq. ft. (Removed homes by "Others")
 273,000 sq. ft. (Total)
 Improvements
 77,000 sq. ft. (Proposed)
 5,430 sq. ft. (by "Others")
 83,030 sq. ft. (Total)
 Impervious Area Added: ±83,030 sq. ft.
 Pervious Area: ±372,900 sq. ft.

Stormwater Compliance

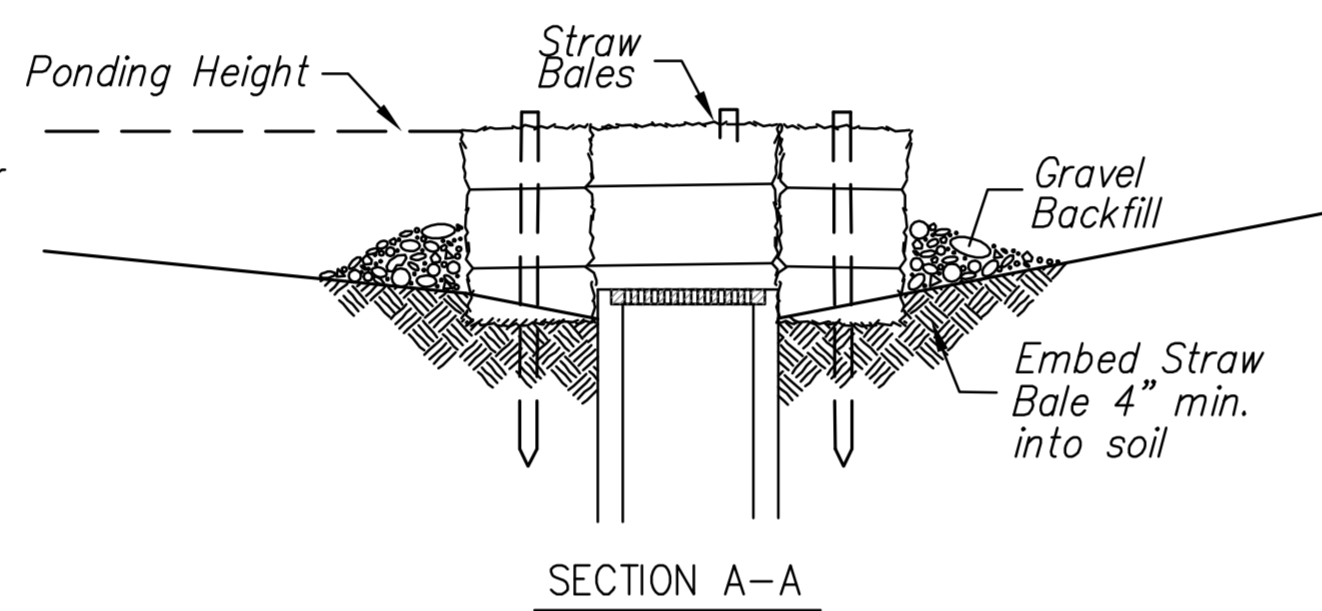
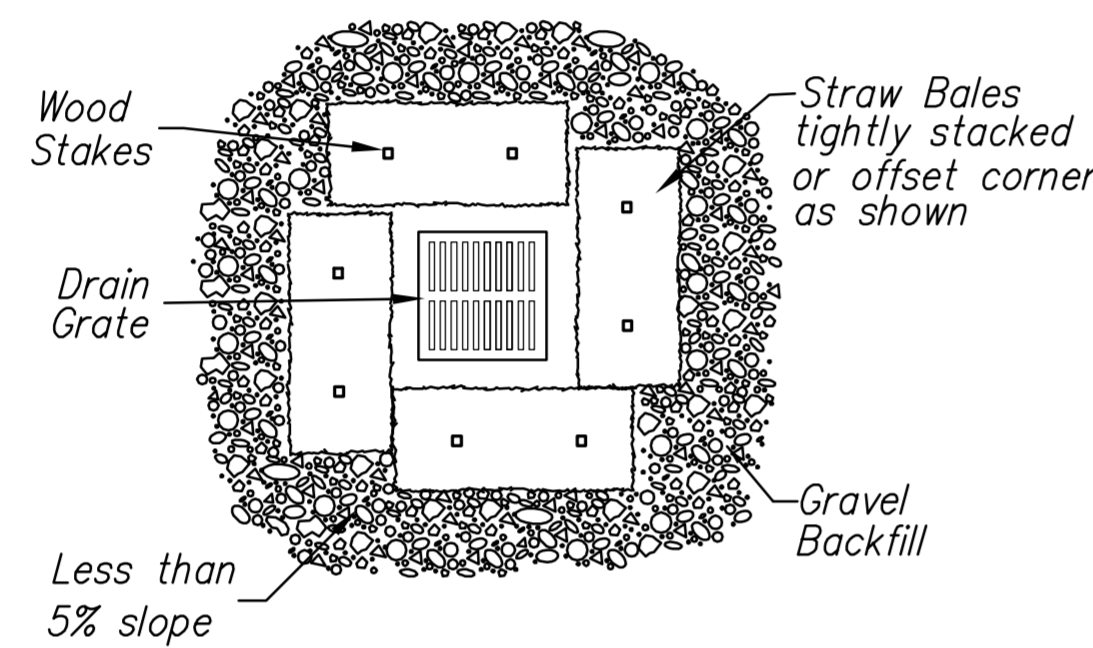
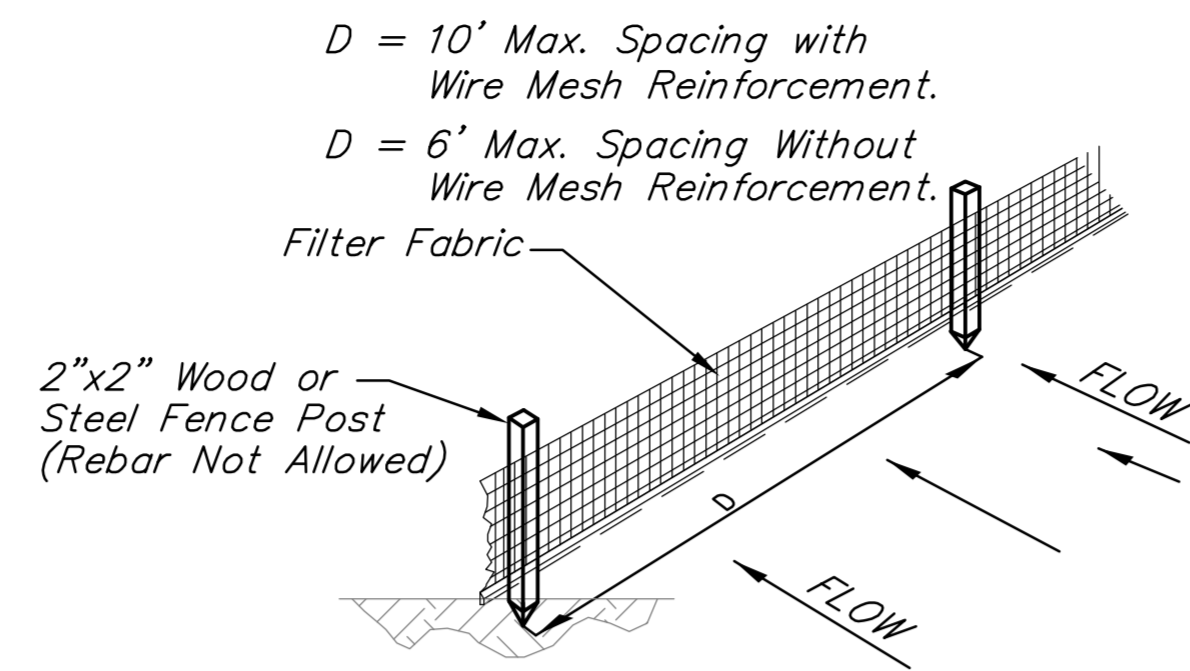
Water Quality requirements will be met by reducing impervious pavement and buildings in excess of 20%. The net reduction of impervious pavement has been calculated to be 69%. If future improvements include more than 136,600sq. ft of impervious area, those improvements will require water quality measurements.



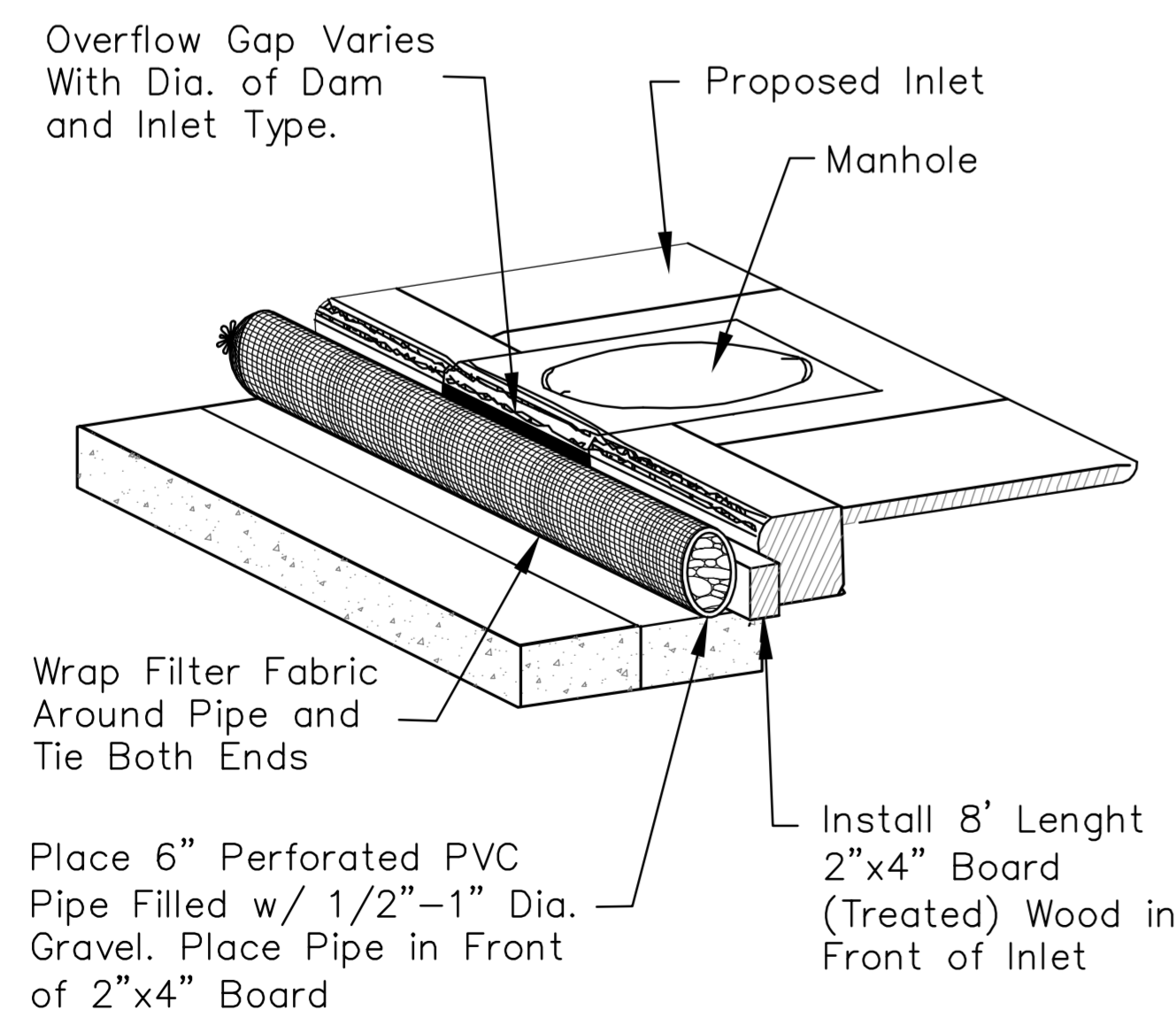
Baughman Company, P.A. 315 Ellis St. Wichita, KS 67211 P 316-262-7271 F 316-262-0149
 ENGINEERING | SURVEYING | PLANNING | LANDSCAPE ARCHITECTURE



1 SILT FENCE DETAIL
NOT TO SCALE



2 STRAW BALE BARRIERS FOR AREA INLETS
NOT TO SCALE



3 TYPE 1 INLET PROTECTION
NOT TO SCALE

BENCHMARK

□ CUT TOP OF CURB 250± WEST AND 41± NORTH OF THE SOUTHEAST CORNER OF LOT 1, BLOCK A, NORTH HIGH 2ND ADDITION.
ELEVATION = 1307.38 NAVD88 (1306.91 NAVD29)
□ CUT TOP OF CURB AT END OF RETURN, 7' SOUTH OF FIRE HYDRANT, SW CORNER OF 15TH AND ROCHESTER.
ELEVATION = 1307.79 NAVD88 (1307.32 NAVD29)
□ CUT TC, 10' OF WEST END OF EX. INLET, SW CORNER 16TH & ARKANSAS.
ELEVATION = 1307.79 NAVD88 (1307.32 NAVD29)

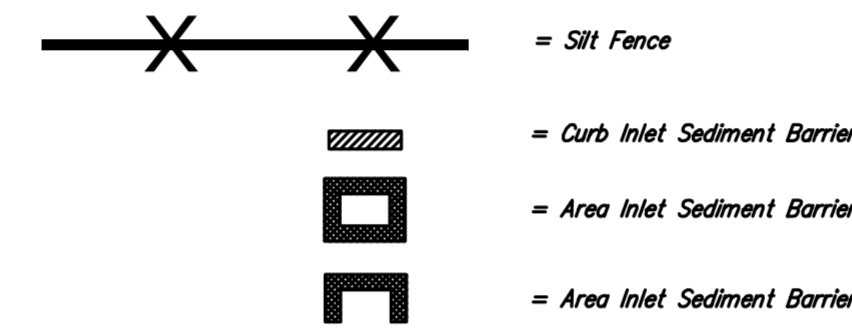
LEGAL DESCRIPTION

Lot 1, Block A, North High School 2nd Addition, Wichita, Sedgewick County Kansas.

SITE INFORMATION

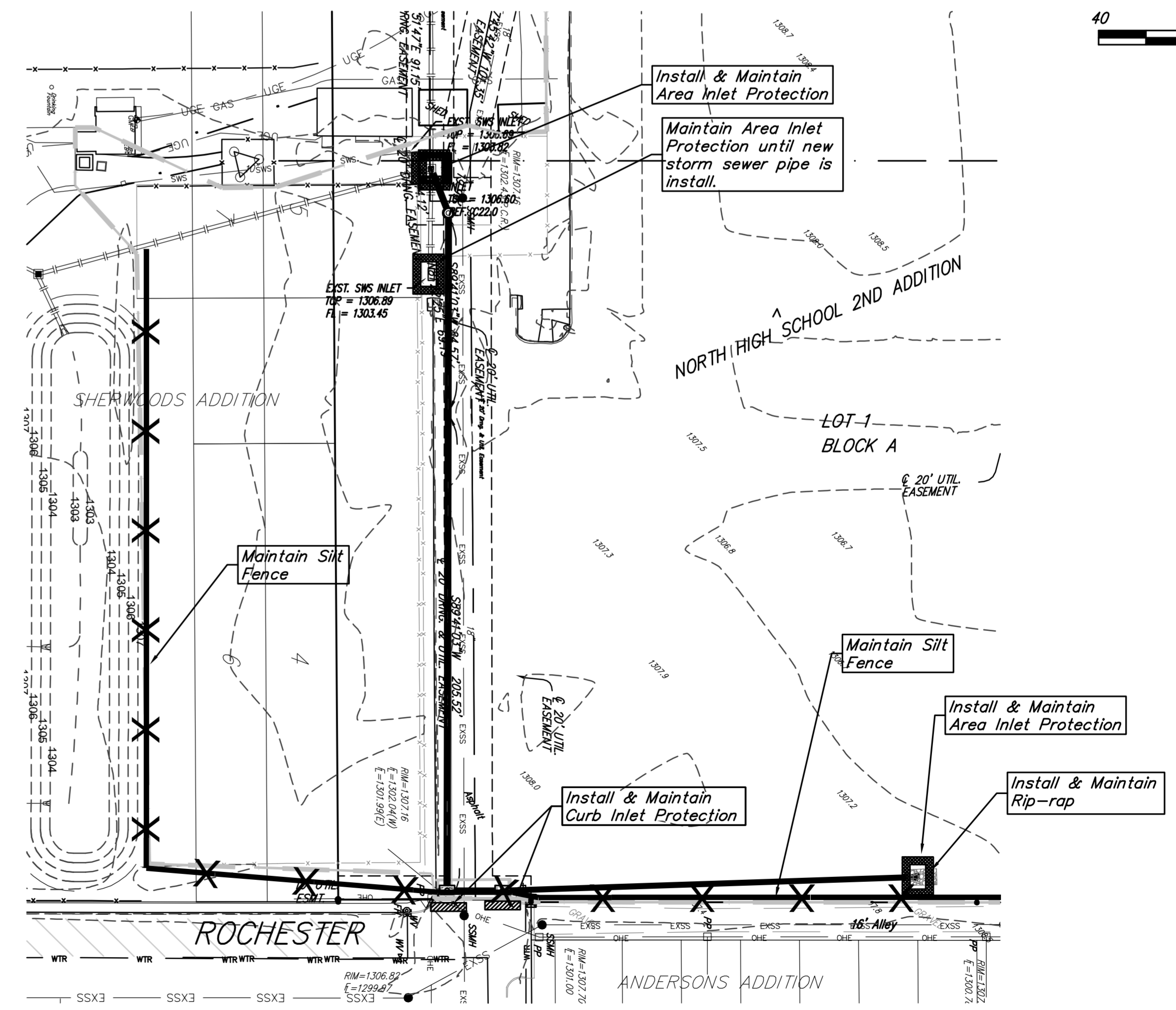
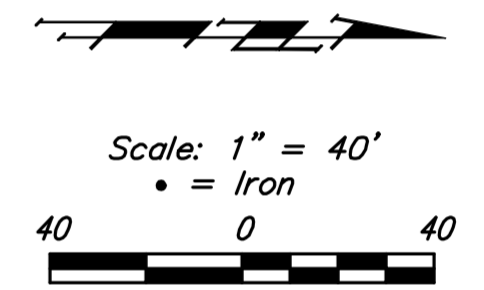
Total Area:	±456,000sq. ft. (10.46 acres)
Disturbed Area:	±450,000 sq. ft. (10.33acres)
Impervious Area:	±78,100 ft. (1.79acres)
Building Area:	0 sq. ft.
Parking Required:	0 spaces
Parking Provided:	0 Spaces

EROSION CONTROL LEGEND



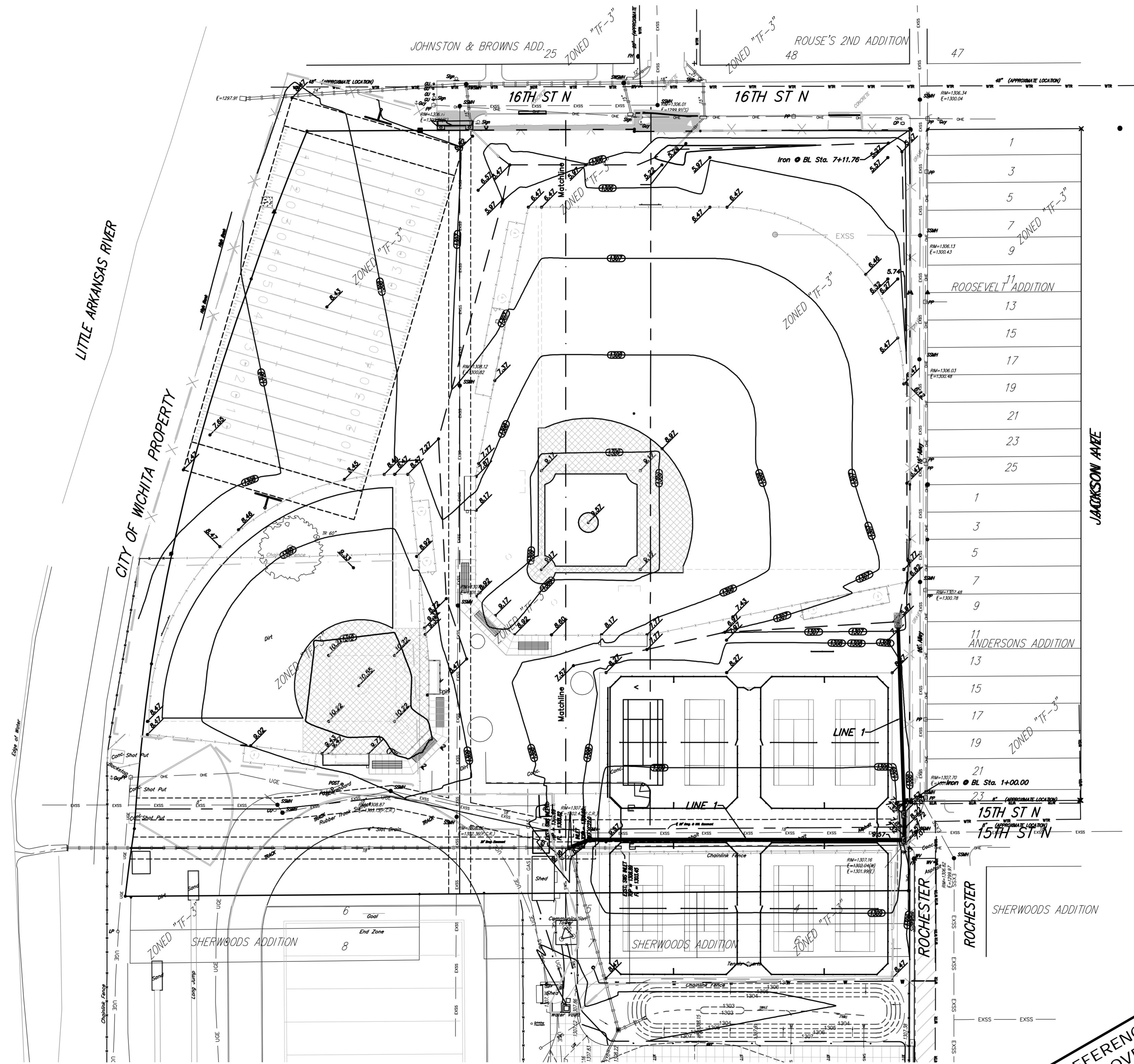
EROSION CONTROL NOTES

- No land clearing or grading shall begin until all applicable erosion control measures have been installed. This project is subject to this SWPP Plan. The Contractor shall comply with any unusual requirements as necessary for the site to be in compliance during construction, per this plan and City specs (See #11).
- All exposed areas shall be seeded as specified within 30 days of final GRADING.
- Should construction stop for longer than 15 days, the site shall be seeded as specified.
- Maintain erosion control measures after each rain and at least once a week.
- This plan shall not be considered all inclusive as the contractor shall take all necessary precautions to prevent soil sediment from leaving the site.
- Contractor shall comply with all state and local ordinances that apply.
- Additional erosion and sediment control measures will be installed if deemed necessary by on site inspection.
- Land disturbing activities shall not commence until approval to do so has been received by governing authorities.
- If installation of storm drainage system should be interrupted by weather or nightfall, the pipe ends shall be covered with filter fabric.
- See Landscape Plan for ground treatments in all disturbed areas beyond impervious surfaces.
- This SWPP Plan should be in job trailer and/or on site at all times. The Contractor is responsible for any needed changes, updates or maintenance to BMP's on site. This plan may change and updates need to be recorded and documented on the plan. This plan is a flexible plan, due to changing site conditions and weather. Please inform Landscape Architect and/or Engineer of changes to plan.
- ANY substitutions for the sediment control devices shown, must be approved by the Landscape Architect and/or Engineer prior to any uses on site.
- An NPDES Permit Application has been submitted for this property. A copy of this application must be kept at the job site for the duration of the construction process.

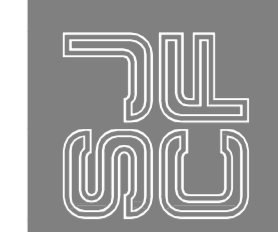


Baughtman Company, P.A.
315 E. H.S. Wichita, KS 67211 P: 316-262-7271 F: 316-262-0149
ENGINEERING | SURVEYING | LANDSCAPE ARCHITECTURE
Baughtman
1111 N. University North, 2nd Addition, 315 E. H.S. Engineering, Wichita, KS

North High School 2nd Addition
EROSION CONTROL PLAN
Storm Water Drain Improvements



**FOR REFERENCE ONLY
SEE APPROVED FINAL SITE
PLANS FOR CONSTRUCTION**



SCHAEFER JOHNSON COX FREY ARCHITECTURE
 Empire Center
 1000 North
 Wichita, Kansas
 67202-2317
 Fax: 316.262.1955
 www.sjcf.com
 info@sjcf.com

BAUGHMAN COMPANY, P.E.
 CIVIL ENGINEERS / LAND SURVEYORS
TERRACON CONSULTANTS, INC.
 GEOTECHNICAL ENGINEERS

**USD 259
WICHITA HIGH SCHOOL NORTH
BID NO. 11-25054**
 1247 ROCHESTER STREET
 WICHITA, KS 67203

© 2010
 Schaefer Johnson Cox Frey & Associates, P.A.
 All Rights Reserved.
 These drawings and their contents, including
 but not limited to, all electronic drawings, are
 the sole property of Schaefer Johnson Cox Frey & Associates, P.A. and may not be
 used or reproduced in any way without the
 express consent of SJCF.

Revisions

▲	▲
▲	▲
▲	▲
▲	▲

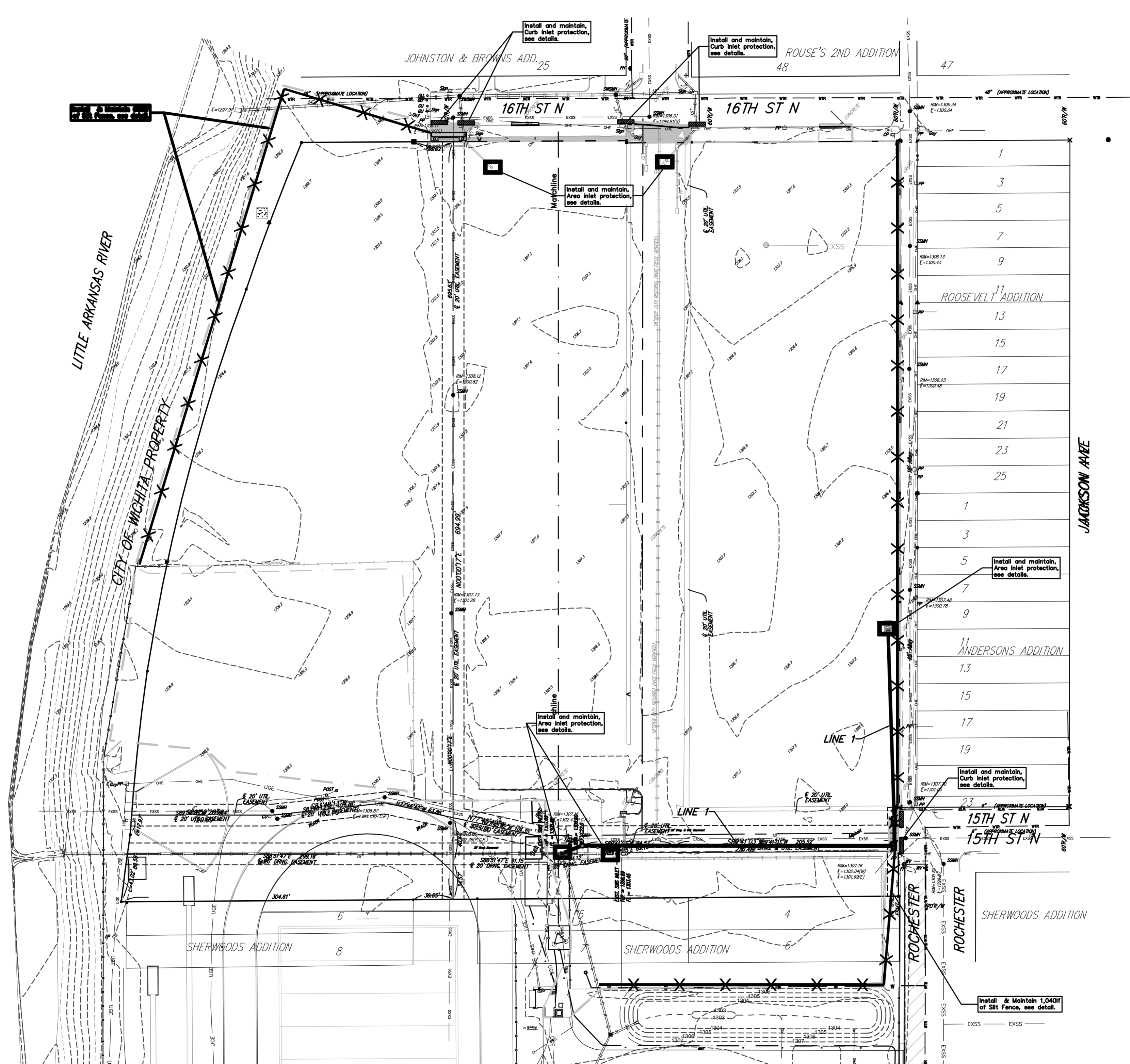
Project Number
SJCf 5039.10

Date
May 2013

GRADING PLAN
 1" = 30'-0"
C22.0

Baughman Company, P.A.
 315 Elm St. Wichita, KS 67211 P 316.262.2711 F 316.262.0149
 MISSOURI | KANSAS | ILLINOIS | IOWA | ARIZONA | ARKANSAS
 1877 ROCHESTER STREET, WICHITA, KS 67203
 www.baughmancompany.com

**North High School 2nd Addition
SITE GRADING PLAN
REFERENCE COPY**
 Storm Water Drain Improvements



BENCHMARK

* CUT TOP OF CURB 250'± WEST AND 41'± NORTH OF THE SOUTHEAST CORNER OF LOT 1, BLOCK A, NORTH HIGH 2ND ADDITION. ELEVATION = 1307.79 NAVD83 (1307.91 NAVD29)
 * CUT TOP OF CURB AT END OF RETURN, 7' SOUTH OF FIRE HYDRANT, SW CORNER OF 15TH AND ROOSEVELT. ELEVATION = 1307.79 NAVD83 (1307.32 NAVD29)
 * CUT TO 10' OF WEST END OF EX. INLET, SW CORNER 16TH & ARKANSAS. ELEVATION = 1307.79 NAVD83 (1307.32 NAVD29)

LEGAL DESCRIPTION

Lot 1, Block A, North High School 2nd Addition, Wichita, Sedgewick County Kansas.

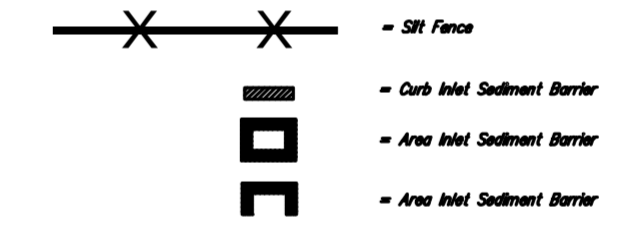
SITE INFORMATION

Total Area:	±456,000sq. ft. (10.46 acres)
Disturbed Area:	±450,000 sq. ft. (10.33acres)
Impervious Area:	±78,100 ft. (1.79acres)
Building Area:	0 sq. ft.
Parking Required:	0 spaces
Parking Provided:	0 Spaces

EROSION CONTROL NOTES

- No land clearing or grading shall begin until all applicable erosion control measures have been installed. This project is subject to this SWEP Plan. The Contractor shall comply with any unmet requirements as necessary for the site to be in compliance during construction, per this plan and City specs (See #11).
- All exposed areas shall be seeded as specified within 30 days of final GRADING.
- Should construction stop for longer than 15 days, the site shall be seeded as specified.
- Maintain erosion control measures after each rain and at least once a week.
- This plan shall not be considered all inclusive as the contractor shall take all necessary precautions to prevent soil sediment from leaving the site.
- Contractor shall comply with all state and local ordinances that apply.
- Additional erosion and sediment control measures will be installed if deemed necessary by on site inspection.
- Land disturbing activities shall not commence until approval to do so has been received by governing authorities.
- If installation of storm drainage system should be interrupted by weather or nightfall, the pipe ends shall be covered with filter fabric.
- See Landscape Plan for ground treatments in all disturbed areas beyond impervious surfaces.
- This SWEP Plan should be in job trailer and/or on site at all times. The Contractor is responsible for any needed changes, updates or maintenance to BMP's on site. This plan may change and updates need to be recorded and documented on the plan. This plan is a flexible plan, due to changing site conditions and weather. Please inform Landscape Architect and/or Engineer of changes to plan.
- ANY substitutions for the sediment control device shown, must be approved by the Landscape Architect and/or Engineer prior to any use on site.
- An NPDES Permit Application has been submitted for this property. A copy of this application must be kept at the job site for the duration of the construction process.

EROSION CONTROL LEGEND



**FOR REFERENCE ONLY
 SEE APPROVED FINAL SITE
 PLANS FOR CONSTRUCTION**

SITE EROSION CONTROL PLAN
 Scale 1" = 40'-0"

SCHAFFER ARCHITECTURE
 Empire Center
 617 E. 10th St.
 Wichita, Kansas
 67202-2317
 Phone: 316.262.1111
 Fax: 316.262.1112
 www.schaferarch.com

SCHAFFER ARCHITECTURE
 SCHAEFER JOHNSON COX FREY
 ARCHITECTURE
 1347 ROCHESTER STREET
 WICHITA, KS 67203

BAUGHMAN COMPANY, P.E.
 CIVIL ENGINEERS / LAND SURVEYORS
TERRACON CONSULTANTS, INC.
 GEOTECHNICAL ENGINEERS

USD 259
WICHITA HIGH SCHOOL NORTH
BID NO. 11-25054
 1347 ROCHESTER STREET
 WICHITA, KS 67203

© 2008
 Schaefer Johnson Cox Frey & Associates, P.A.
 All Rights Reserved.
 These drawings and their contents, including
 but not limited to, all information, drawings, &
 data, are the exclusive property of Schaefer
 Johnson Cox Frey & Associates, P.A. and may not be
 used or reproduced in any way without the
 express consent of SJC.
Revisions
 Project Number
 SUCF 5039.10
 Date
 May 2013
**EROSION
 CONTROL
 PLAN**
 1" = 40'-0"
C23.0

B
Baughman
 ENGINEERING SURVEYING PLANNING
 LANDSCAPE ARCHITECTURE
 Baughman Company, P.A.
 315 Ellis St. Wichita, KS 67211 P: 316.262.0149
 3156 262-7271 7314-262-0119

North High School 2nd Addition
EROSION CONTROL PLAN
REFERENCE COPY
 Storm Water Drain Improvements
Baughman
 SHEET
 OF
 7
 7