

STORM WATER SEWER #670

TO SERVE


BAY COUNTRY ADDITION

PROJECT NO. 468-84888

THE CITY OF WICHITA, KANSAS
GARY JANZEN, P.E. - CITY ENGINEER

OCA NO. 751521

GENERAL NOTES

- UNLESS SHOWN OR OTHERWISE STATED ON THESE DRAWINGS, MATERIALS AND CONSTRUCTION SHALL BE IN ACCORDANCE WITH THE CITY OF WICHITA STANDARD SPECIFICATIONS.
- THE TOPS OF INLETS AND MANHOLES AS NOTED ON THE PLANS MAY VARY SO AS TO MEET PROPOSED TOP OF CURB ELEVATIONS OR PAVEMENT ELEVATIONS. THE FIELD ENGINEER SHALL LOCATE INLETS AND MANHOLES WITH REFERENCE TO PROPOSED PAVING PLANS OF THE PERTINENT STREETS.
- ALL CONCRETE SHALL BE STANDARD PAVING MIX UNLESS OTHERWISE NOTED.
- THE CONTRACTOR SHALL BE RESPONSIBLE FOR PRESERVING PROPERTY IRONS. THE CONTRACTOR SHALL BE REQUIRED TO RE-ESTABLISH ANY PROPERTY IRONS WHICH ARE DAMAGED OR DESTROYED BY HIS CONSTRUCTION OPERATIONS. SUCH IRONS SHALL BE RE-ESTABLISHED BY A LICENSED LAND SURVEYOR IN ACCORDANCE WITH STATE LAWS.
- TREES TO BE REMOVED ARE MARKED  ALL TREES WHICH IN THE OPINION OF THE FIELD ENGINEER CAN BE SAVED, SHALL BE SAVED.
- CONTRACTOR SHALL NOTIFY UTILITY COMPANIES OF CONSTRUCTION SCHEDULING.
- EXISTING UTILITIES AND THEIR LOCATIONS, AS SHOWN ON THE PLANS REPRESENT THE BEST INFORMATION OBTAINABLE FOR DESIGN. LOCATION INFORMATION HAS BEEN OBTAINED FROM THE VARIOUS COMPANIES AND IS EITHER FROM COMPANY UTILITY DRAWINGS OR COMPANY PROVIDED FIELD LOCATIONS. THE PLAN LOCATIONS SHOWN ARE NOT GUARANTEED. ADDITIONAL EXISTING UTILITIES MAY ALSO BE ENCOUNTERED.
- CONTRACTOR WILL BE REQUIRED TO PROVIDE A MINIMUM ADVANCE NOTICE OF SEVENTY-TWO (72) HOURS TO UTILITY COMPANIES TO STARTING ANY EXCAVATION AS FOLLOWS:

KANSAS ONE-CALL 800-344-7233
OR 687-2470 (LOCAL WICHITA)

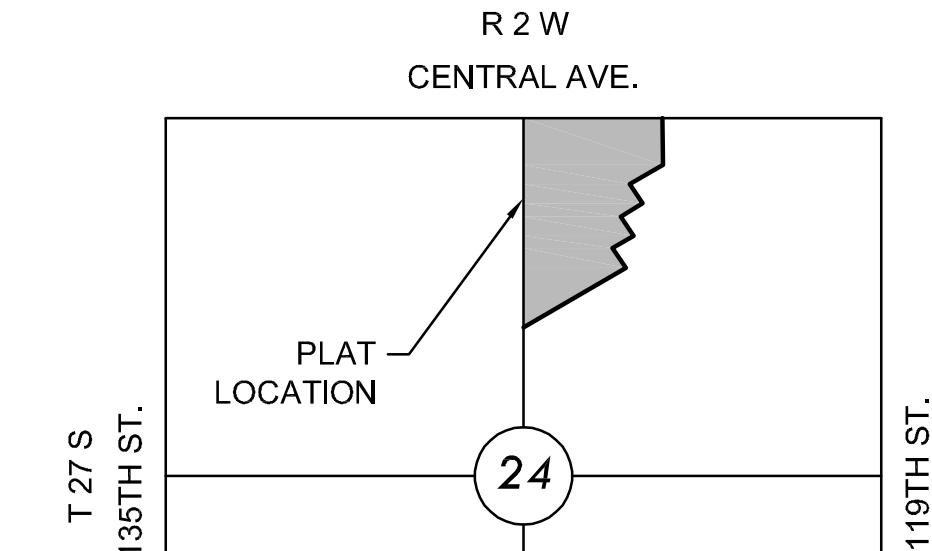
THE CONTRACTOR MUST NOTIFY THE FOLLOWING IN CASE OF EMERGENCY:

COX COMMUNICATIONS (CABLE)	262-0661
WESTAR (ELECTRIC)	261-6512
KANSAS GAS SERVICE (GAS)	832-3101
SBC (TELEPHONE)	800-870-8390
CITY OF WICHITA WATER & SEWER	262-6000
BLACK HILLS ENERGY (GAS)	800-303-0357

- RUBBLE FROM THE REMOVAL OF MISCELLANEOUS STRUCTURES AND EXCESS EXCAVATION WHICH IS TO BE WASTED SHALL BE DISPOSED OF ON SITES TO BE PROVIDED BY THE CONTRACTOR. THESE SITES SHALL BE APPROVED BY THE ENGINEER AS TO SUITABILITY, APPEARANCE AND SITE LOCATION. LOCATIONS THAT, IN THE OPINION OF THE ENGINEER, WILL LEAVE AN UNSIGHTLY APPEARANCE WILL NOT BE APPROVED. ALL DISPOSAL SITES MUST BE APPROVED BY THE KANSAS DEPARTMENT OF HEALTH AND ENVIRONMENT. MATERIAL EITHER STOCKPILED OR DISPOSED OF IN A FLOOD PLAIN WOULD REQUIRE A KANSAS STATE BOARD OF AGRICULTURE PERMIT. ANY MATERIAL DUMPED IN WATERS OF THE UNITED STATES OR WETLANDS IS SUBJECT TO U.S. CORPS OF ENGINEERS PERMITTING REGULATIONS. ANY MATERIAL BURIED OR STOCKPILED BEYOND APPROVED CONSTRUCTION LIMITS WOULD REQUIRE ADDITIONAL ARCHAEOLOGICAL INVESTIGATIONS UNLESS BURIED IN A PREVIOUSLY APPROVED BORROW LOCATION.

- CONTRACTOR SHALL RESEED AND MULCH ALL DISTURBED AREAS. COST SHALL BE CONSIDERED SUBSIDIARY TO SITE RESTORATION.

- DEVELOPER FOR THIS PROJECT IS:
SCHELLENBERG DEVELOPMENT
7926 W 21ST STREET
WICHITA, KS 67205
MARV SCHELLENBERG
JESSE SCHELLENBERG
316-854-0001



VICINITY MAP

No Scale

INDEX TO DRAWINGS

SHEET NO.	DESCRIPTION
1	TITLE SHEET
2-4	DETAILS
5	LINE 1
6	LINE 2 & 3
7	BUBBLE MAP
8	EROSION CONTROL PLAN
9	LOT GRADING PLAN
10-14	BMP DETAILS
15-16	FINAL PLAT

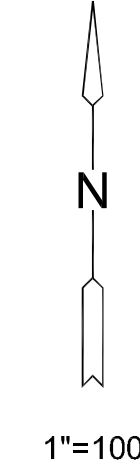
BENCHMARKS

- BM#1 CITY OF WICHITA BENCHMARK DISC ON SOUTHWEST CORNER OF CENTRAL & WHEATLAND, 24' WEST OF CENTERLINE WHEATLAND AND 36' S OF CENTERLINE CENTRAL. ELEV.=1342.80 NAVD88
- BM#2 CHISELED SQUARE ON TOP OF CURB AT SOUTH END OF MEDIAN ISLAND ON BAY COUNTRY, 93' SOUTH OF CENTERLINE CENTRAL. ELEV.=1342.77 NAVD88

CONTROL POINTS

- CP #1 3/4" PIPE & ALUM CAP AT NW CORNER LOT 84, BLOCK 3, BAY COUNTRY ADDITION. N=1687890.55, E=1604864.29
- CP#2 3/4" PEC PIPE 20 IN DEEP SET 5/8" MKEC OVER AT NE CORNER LOT 1, BLOCK 3, BAY COUNTRY ADDITION. N=1687928.17, E=1605860.28
- CP#3 1/2" BAUGHMAN CLS-58 AT SE CORNER LOT 24, BLOCK 3, BAY COUNTRY ADDITION. N=1686629.86, E=1605581.45
- CP#4 1/2" BAUGHMAN CLS-58 AT SW CORNER LOT 102, BLOCK 3, BAY COUNTRY ADDITION. N=1686248.48, E=1604891.44

*MJ HARDEN COORDINATES



STORM WATER SEWER PLAN FOR BAY COUNTRY ADDITION PHASE 1

©2013 MKEC Engineering All Rights Reserved www.mkec.com
These drawings and their contents, including, but not limited to, all concepts, designs, & ideas are the exclusive property of MKEC Engineering (MKEC), and may not be used or reproduced in any way without the express consent of MKEC.

TITLE SHEET

PROJECT NO.	468-84888	
DATE	OCTOBER 2013	
SCALE	1"=100'	
DESIGNED	DRAWN	CHECKED
SPE	SPE	GJA
NO.	REVISION	DATE
SHEET NO.	1 OF 16	