

BAY COUNTRY

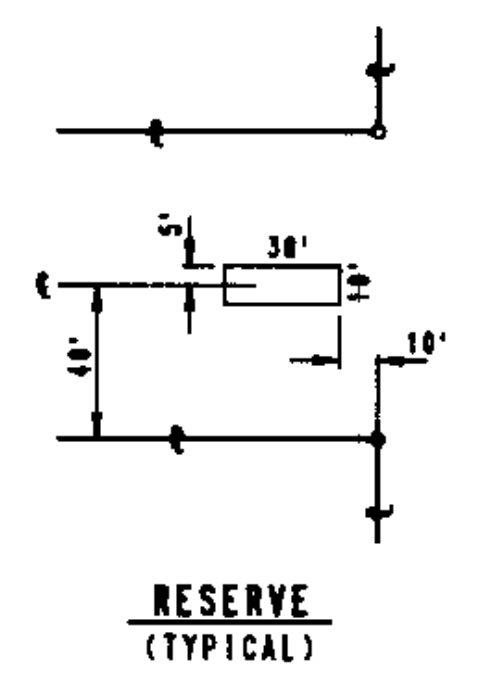
AN ADDITION TO WICHITA, SEDGWICK COUNTY, KANSAS

PLOTTED: Tuesday, October 15, 2013 @ 04:34PM
 J:\PROJECTS\2013\13010386_COW BAY COUNTRY DEVELOPMENTS\CIVIL\CAD\SWR1386_P1ATZ.DWG



SCALE: 1" = 100'

○ IRON SET
 C.A.C. - COMPLETE ACCESS CONTROL
 B.S.L. - BUILDING SETBACK LINE
 S.S. ESM.T. - SANITARY SEWER EASEMENT
 D.W. - DISK 40" EAST AND 40" SOUTH
 OF INTERSECTION AT 6' OF CENT
 WITH 6' OF 119TH STREET WEST
 CITY DATUM ELEV. = 156.93



S.W. Cor. N.E. 1/4
Sec. 24, T27S, R2W
of the 6th P.M.

SANITARY SEWER PLANS FOR
BAY COUNTRY ADDITION
 PHASE 1

©2013
 MKEC Engineering
 All Rights Reserved
 www.mkec.com
 These drawings and their contents, including, but not limited to, all concepts, designs, & ideas are the exclusive property of MKEC Engineering (MKEC), and may not be used or reproduced in any way without the express consent of MKEC.

FINAL PLAT 2

PROJECT NO.	468-84888	
DATE	OCTOBER 2013	
SCALE	#"=#"	
DESIGNED	DRAWN	CHECKED
ABC	ABC	ABC
#	REVISION	DATE
NO.		