

SWS #672 Repair at Harry Street, Hydraulic to Grove Phase II  
Replace Existing Corrugated Metal Conduit with SDR26 PVC Conduit  
Project #468-84897, OCA #133117/133116

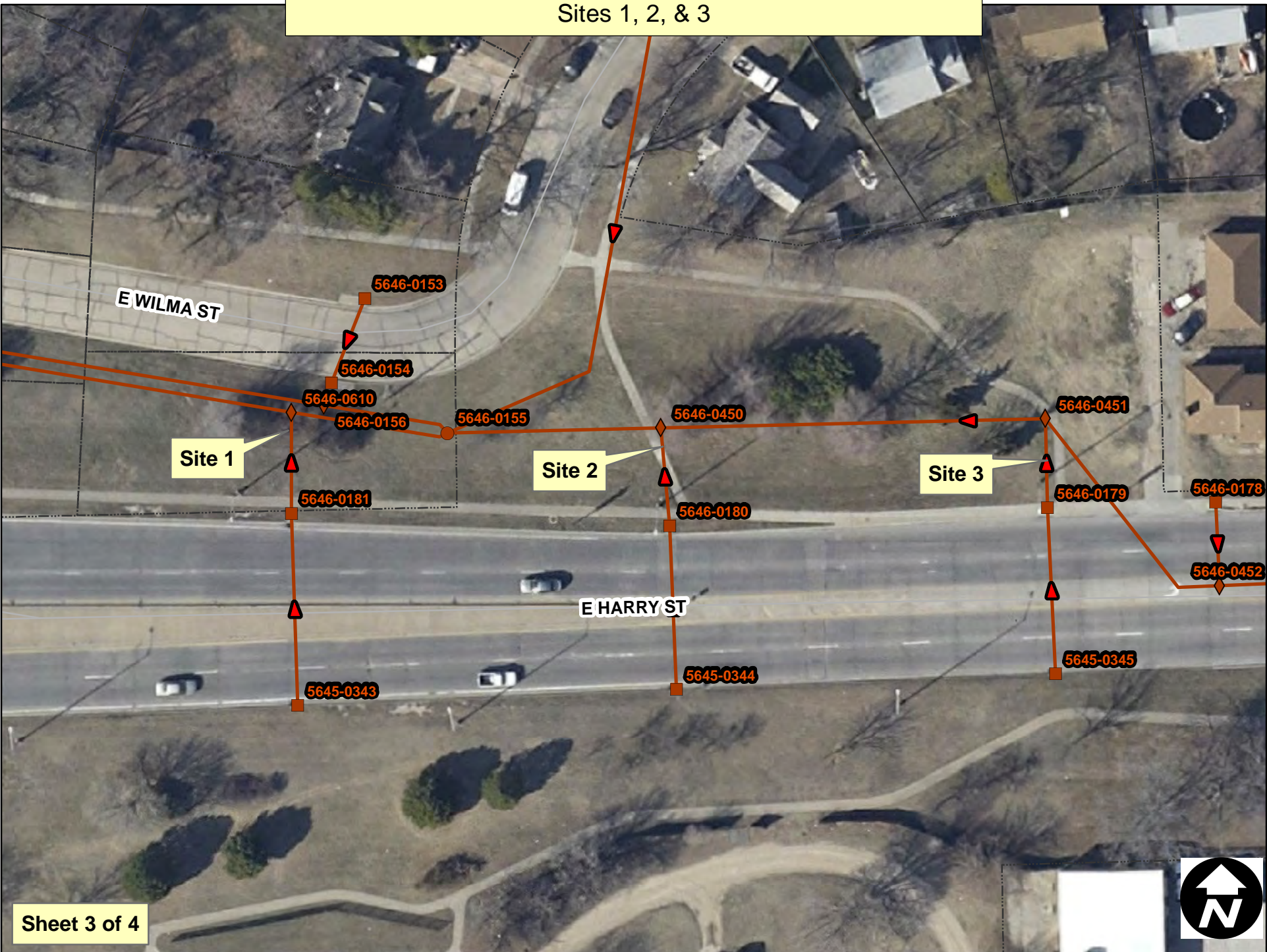


Site Location Map  
Sheet 1 of 4

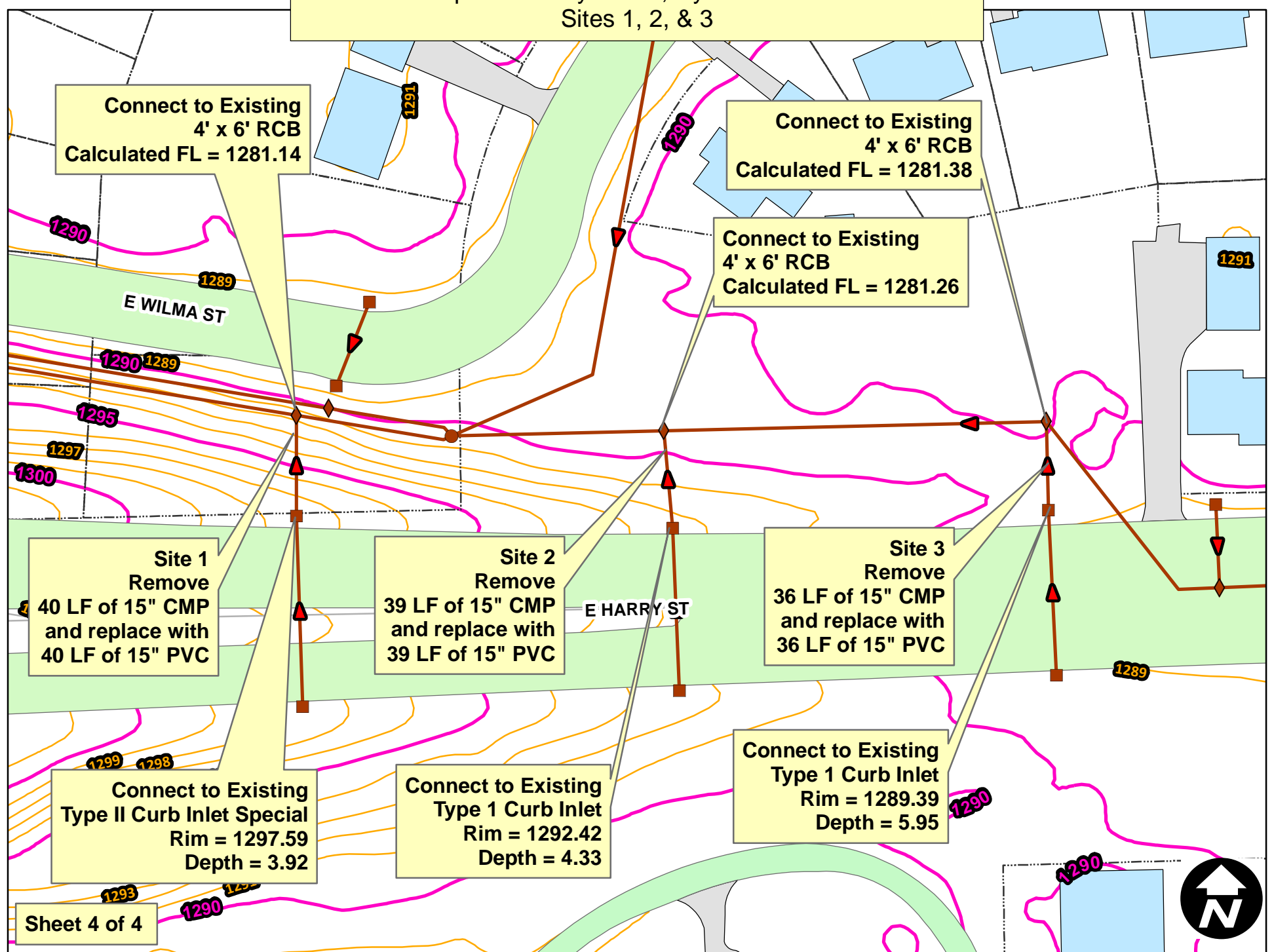
**Stormwater General Notes for Removal & Replacement:**

1. All existing elevations, depths, lengths, sizes, materials and descriptions shown on plan sheets are for information only. The Contractor will field verify these items and any existing utility locations prior to construction.
2. The Contractor will seed and mulch all disturbed areas to City of Wichita Standard Specifications, and cover all disturbed areas with NA SC 150 erosion control blanket or equivalent on slopes greater than 6:1. Seeding and mulching and erosion control blanket will be paid for as incidental to Lump Sum Bid item "Harry St SWS Repair"
3. Sidewalk, curb & gutter, pavement removed and replaced as required or damaged by construction, and any necessary work needed to complete the pipe removal and replacement, will require approval by the City Engineer prior to being done and be paid for as Lump Sum Bid item "Harry St SWS Repair".
4. Flow of traffic must be maintained in all instances. Additionally, all work in the right-of-way or near expected traffic shall conform to the guidelines and rules of the "Manual of Uniform Traffic Control Devices". The Contractor will be required to develop a traffic control plan and receive approval by the City Engineer prior to construction.
5. The storm conduit PVC pipe material will be **SDR26** pipe.
6. On existing ground surface slopes 4:1 or greater, pipe bends may be used, but must be approved prior to construction by the City Engineer.
7. All pipe connections to existing structures will be done per City of Wichita Standard Specifications. Proposed pipe flowlines will match existing pipe flowlines. The pipe connections and any work necessary to connect the proposed pipe to existing structures will be subsidiary to the lump sum bid item "Harry St SWS Repair".

SWS #672 Repair at Harry Street, Hydraulic to Grove Phase II  
Sites 1, 2, & 3



SWS #672 Repair at Harry Street, Hydraulic to Grove Phase II  
Sites 1, 2, & 3



Connect to Existing  
4' x 6' RCB  
Calculated FL = 1281.14

Connect to Existing  
4' x 6' RCB  
Calculated FL = 1281.38

Connect to Existing  
4' x 6' RCB  
Calculated FL = 1281.26

Site 1  
Remove  
40 LF of 15" CMP  
and replace with  
40 LF of 15" PVC

Site 2  
Remove  
39 LF of 15" CMP  
and replace with  
39 LF of 15" PVC

Site 3  
Remove  
36 LF of 15" CMP  
and replace with  
36 LF of 15" PVC

Connect to Existing  
Type II Curb Inlet Special  
Rim = 1297.59  
Depth = 3.92

Connect to Existing  
Type 1 Curb Inlet  
Rim = 1292.42  
Depth = 4.33

Connect to Existing  
Type 1 Curb Inlet  
Rim = 1289.39  
Depth = 5.95

