

St. Louis St.

MH 5347-147  
Replace MH Frame & Cover  
Depth not measured

MH 5347-145  
Remove Manhole  
Construct Shallow Manhole  
Approx depth = 4.0 ft

Remove 455 lf of 8" Pipe  
Install 455 lf of 8" Pipe  
Estimated 14 Service  
Reconnections (4")

MH 5347-158  
Remove Manhole  
Construct Shallow Manhole  
Approx depth = 3.8 ft

MH 5347-142  
Approx depth = 4.3 ft

Vine

Millwood

Fern

(unpaved alley)

(unpaved alley)

(unpaved alley)

154'

301'

186'

282'

298' PVC

3rd St. N.

330'

456

447

405

402

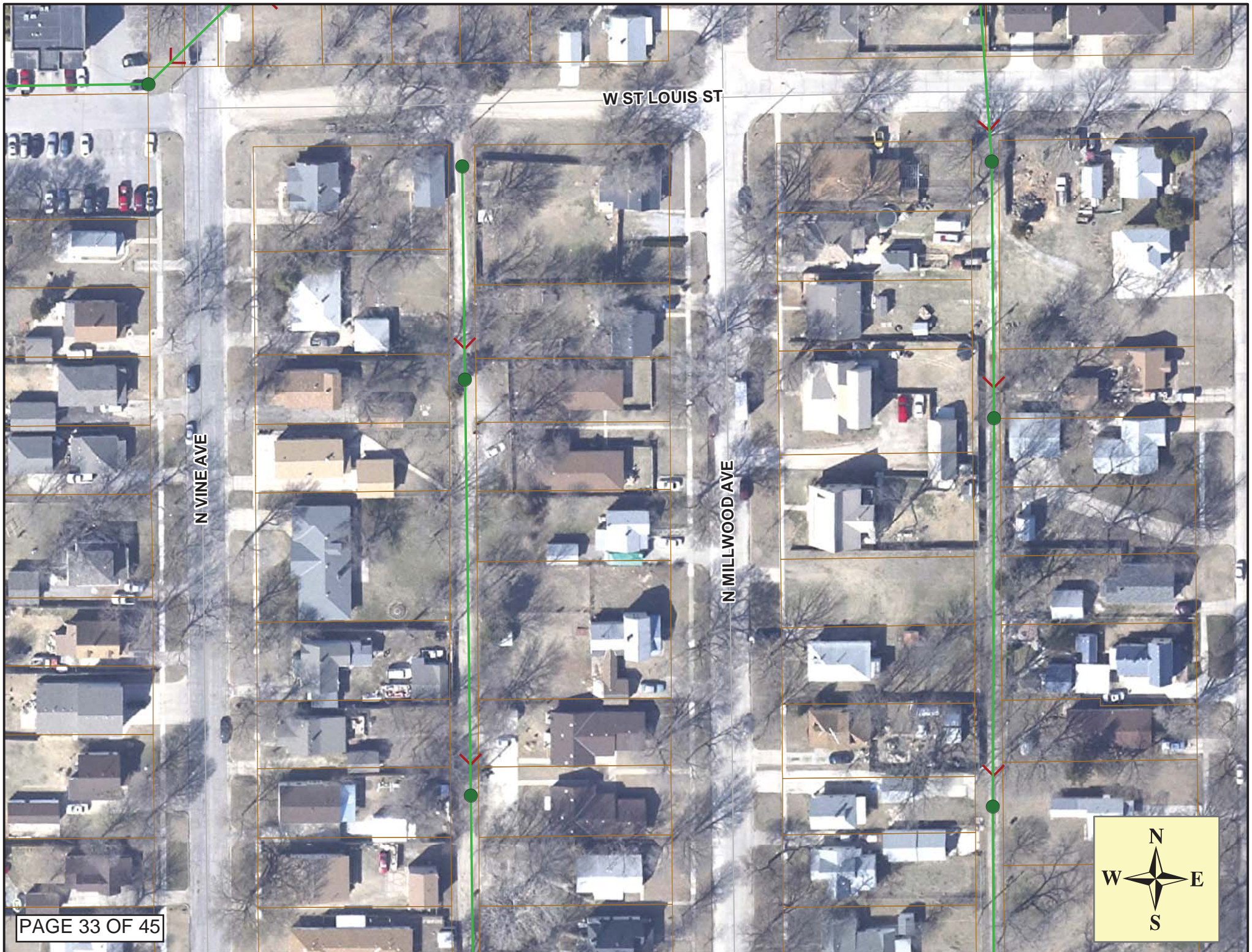
401

352

**SITE 7**

PAGE 32 OF 45





W ST LOUIS ST

N VINE AVE

N MILLWOOD AVE



## Video Inspection Master Report

9/6/2013

3:03 PM

US Structure: 5347-147                      447 N MILLWOOD                      Date Insp: 5/30/2013                      Basin: C07B  
 DS Structure: 5347-145                      442 N VINE                                      Dir Televised:Upstream To Downstream

**Pipe Information**

Shape: Round                                      Length Status:                                      Project No. : B-044  
 Dia/Ht: 8    Material: VCP                                      DVD #0785  
 Length: 154.0                                      Slope: 0.201                                      Overall Cond:Poor

Obs. #	VTR Counter	Distance	Location	Description	Rating	Obsrvd (gpm)	Ratings		Remain (gpm)
							Est. (gpm)	Struct Clean	
1		0.0	5347-147	US Manhole	1				MH not recently found - LML
2		4.0		Sealed Off Wye	1				
3		7.3	447 NORTH MILLWOOD	Break-In Conn	1				
4		29.8	456 NORTH VINE	Wye Service	3				ROOTS - 1/2 full of roots - LML
5		32.3		Sealed Off Wye	1				
6		46.6		Crack-Horizontal	3				
7		52.7		Observation Hole	1				
8		55.5		Sealed Off Wye	1				
9		57.8		Sealed Off Wye	1				
10		81.0	450 NORTH VINE	PVC Break-In Conn	1				
		82.0							offset joint - LML
11		83.8		Sealed Off Wye	1				
12		107.1		Sealed Off Wye	1				
13		109.5		Sealed Off Wye	1				
14		130.4		Sag begins	3				camera lens submerged - LML
17		139.0		Wye Service	1				
15		152.0		Sag ends	1				
16		153.3	5347-145	DS Manhole	1				brick trough - LML

Water was at the bottom of the camera lens the whole way. Poor grade. -LML

## Video Inspection Master Report

9/6/2013

3:03 PM

US Structure: 5347-145                      442 N VINE                      Date Insp: 5/30/2013                      Basin: C07B  
 DS Structure: 5347-142                      412 N VINE AVE                      Dir Televised: Upstream To Downstream

**Pipe Information**

Project No. : B-044      Dia/Ht: 8      Material: VCP      Length: 301.1      Slope: 0.199

Obs. #	VTR Counter	Distance	Location	Description	Rating	Obsrvd (gpm)	Ratings		
							Est. (gpm)	Struct Clean	Remain (gpm)
1		0.0	5347-145	US Manhole	1				
2		4.2		PR Starts - Mat. Chngs to PVC	1				
3		5.3	442 NORTH VINE	PVC Break-In Conn	1				
4		6.4		PR Ends - Mat. Chngs to VCP	1				
5		8.0		Sealed Off Wye	1				
6		16.7	437 NORTH MILLWOOD	Break-In Conn	1				TRAP / line comes in from below tap level -LML
7		31.1		Sealed Off Wye	1				
8		33.7		Sealed Off Wye	1				
9		56.9	438 NORTH VINE	Wye Service	1				
10		59.2	433 NORTH MILLWOOD	Wye Service	1				
11		62.4	433 NORTH MILLWOOD	Break-In Conn	1				TRAP/ line comes in from below tap level -LML
12		76.2		Crack-Horizontal	2				
13		82.5		Sealed Off Wye	1				
14		82.5		Sealed Off Wye	1				
15		98.9		Broken Pipe	3				
16		100.2		Observation Hole	1				
17		105.5	430 NORTH VINE	Break-In Conn	1				ROOTS
18		106.9		Roots	3				
19		108.2		Sealed Off Wye	1				
20		109.3		Roots	3				
21		131.6		Sealed Off Wye	1				
22		134.2	431 NORTH MILLWOOD	Wye Service	1				
23		157.6		Sealed Off Wye	1				water level is pretty high in the pipe - LML
24		159.6		Sealed Off Wye	2				ROOTS
25		183.2		Sealed Off Wye	1				
26		185.5		Sealed Off Wye	1				
27		199.8		Broken Pipe	3				
28		201.0		Observation Hole	1				
29		208.5	424 NORTH VINE	Wye Service	1				
30		209.2		Sag	1				
31		211.4	421 NORTH MILLWOOD	Wye Service	1				
32		234.5		Sealed Off Wye	1				
33		237.1		Sealed Off Wye	1				
34		241.4		Broken Pipe	3				
35		258.0	SEE REVERSE SETUP	Stopped Inspection	3				Comment: DUE TO GREASE

For the traps: The tap on the main is in the usual location, but when the camera turns to look, all you see is a puddle of water outside of the main and you don't see any portion of the service line. -LML

## Video Inspection Master Report

9/6/2013

3:03 PM

US Structure: 5347-145                      442 N VINE                      Date Insp: 6/4/2013                      Basin: C07B  
 DS Structure: 5347-142                      412 N VINE AVE                      Dir Televised: Downstream To Upstream

**Pipe Information**

Shape: Round	Length Status:	Project No. : B-044
Dia/Ht: 8	Material: VCP	
Length: 301.1	Slope: 0.199	DVD #0785

**REVERSE SETUP:**

Obs. #	VTR Counter	Distance	Location	Description	Rating	Obsrvd (gpm)	Ratings			Remain (gpm)
							Est. (gpm)	Struct	Clean	
1		0.0	5347-142	DS Manhole	1	tv against the flow				
2		1.0		Crack-Radial	0					
3		7.0		Continued Inspection	1					
4		13.7		Sealed Off Wye	1					
5		16.4		Sealed Off Wye	1					
6		39.7	419 NORTH MILLWOOD	Break-In Conn	1					
7		42.1	414 NORTH VINE	Wye Service	1					
8		45.3	414 NORTH VINE	Break-In Conn	3	APPEARS ABANDON				
				This was confirmed to be abandoned, per Sewer Maintenance.		- LML				
						Oct. 2013				
9		65.3		Sealed Off Wye	1					
10		68.1		Sealed Off Wye	1					
11		89.4		Broken Pipe	3					
12		91.3	421 NORTH MILLWOOD	Wye Service	1					
13		94.0	424 NORTH VINE	Wye Service	1					
14		100.9		Crack-Radial	3					
15		101.3		Stopped Inspection	1	SAME PLACE AS ABOVE LOG ENDED				

There were a lot of roots at the joints that were not called out on the tv log. - LML