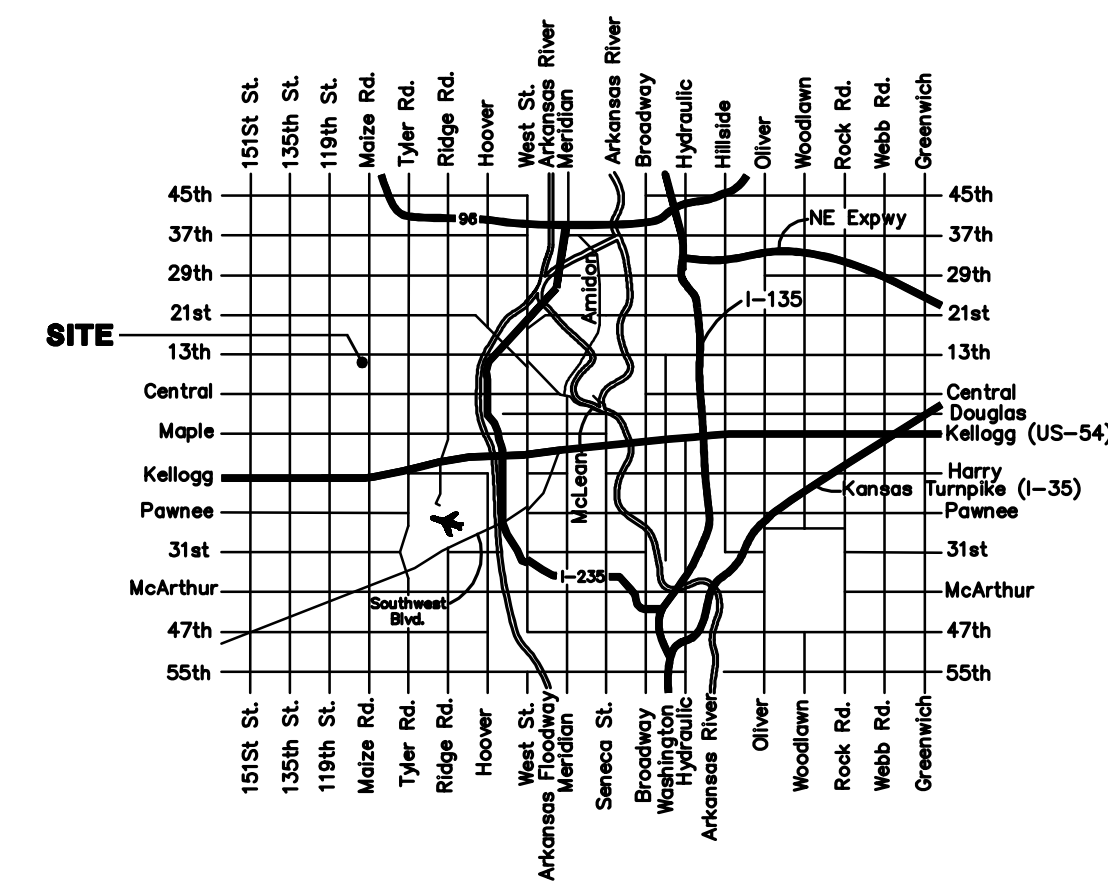
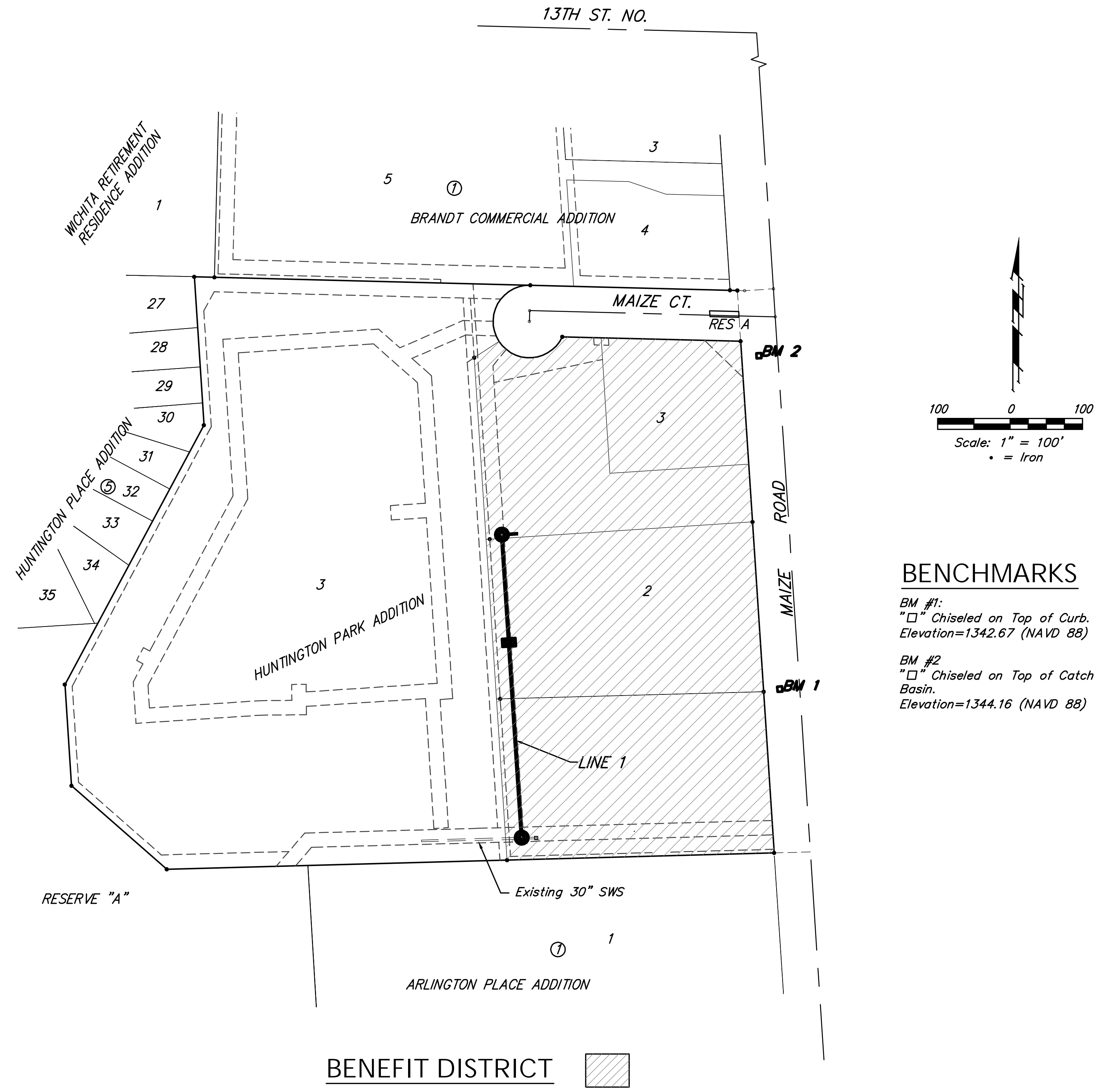


SWS #388  
 STORMWATER SEWER IMPROVEMENTS  
 to serve  
**HUNTINGTON PARK ADDITION**  
 CITY OF WICHITA, KANSAS

Gary Janzen, P.E. City Engineer  
 Project Number  
 468 - 84884  
 O.C.A. Number  
 751515

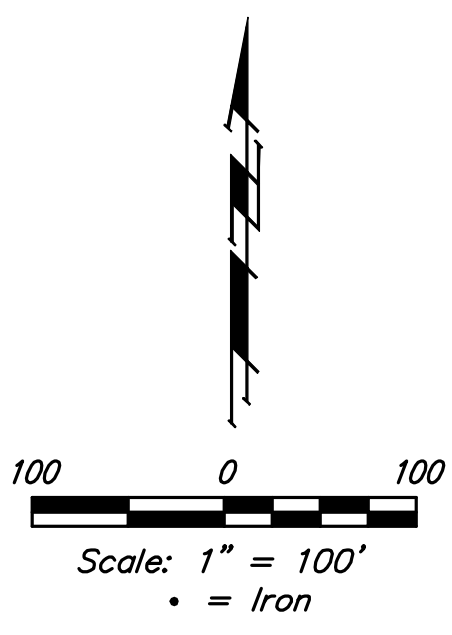


VICINITY MAP



**SHEET INDEX**

Title Sheet	1
Line 1	2
Water Quality Unit Details	3
Standard Drop Inlet Details	4
Standard Manhole Detail	5
Erosion Control Plan	6
Erosion Control BMP Details	7-10
Coordinate Sheet	11
Copy of Plat	12



**BENCHMARKS**

BM #1:  
 "□" Chiseled on Top of Curb.  
 Elevation=1342.67 (NAVD 88)

BM #2:  
 "□" Chiseled on Top of Catch  
 Basin.  
 Elevation=1344.16 (NAVD 88)

**SITE ERU INFORMATION**

Refer to 185PPD607861 for Approval

Parcel 1: (Grene Vision Group Facility)  
 Total Area: ±95,562 sq. ft. (2.19 acres)  
 Disturbed Area: ±95,562 sq. ft. (2.19 acres)  
 Ex. Impervious Area: 0.00 sq. ft. (0.00 acres)  
 Impervious Area: ±48,371 sq. ft. (1.11 acres)  
 Future Imp. Area: ±18,313 sq. ft. (0.42 acres)  
 Total Future Imp. Area: ±66,684 (1.53 acres)

Parcel 2: (Middle Parcel)  
 Total Area: ±83,974 sq. ft. (1.93 acres)  
 Maximum Future Impervious Area:  
 ±83,974 sq. ft. (1.93 acres)

Parcel 3: (South Parcel)  
 Total Area: ±82,198 sq. ft. (1.88 acres)  
 Maximum Future Impervious Area:  
 ±82,198 sq. ft. (1.64 acres)

Total Future Impervious Area:  
 Maximum Impervious Area (without additional  
 Water Quality Measurements): ±235,616 sq. ft.  
 Min. Pervious Area (without additional  
 Water Quality Measurements): ±26,180 sq. ft.


**STORMWATER COMPLIANCE**

Refer to 185PPD607861 for Approval

Downstream Channel Protection and Water Quality Protection would typically be addressed with improvements to the existing downstream offsite wet basin. The basin owner is not allow revisions to the existing basin. In lieu of Downstream Channel Protection (CPv = 31,670 cu.ft.), a Hydroworks HG7 Water Quality Unit will be constructed to exceed Water Quality Protection for the above noted commercial area and address water quality at SW corner of Parcel 3. Maintenance & Inspection records for the HG7 will be the responsibility of the Parcel 1, see approved 0185PPD607861 for all Documentation. This improvement has been developed to satisfy Section 16.32 of the City Code.

**GENERAL NOTES:**

1. Contractor will be required to provide notice to utility companies a minimum of forty-eight (48) hours prior to any excavation, as follows:  
 Kansas One-Call 687-2470  
 The Contractor must notify the following in case of an emergency:  
 Cox Communications 262-4270  
 Kansas Gas Service 1-888-482-4950  
 Westar Energy 383-8650  
 Aquila Energy 1-800-303-0357  
 AT&T 268-2245  
 City of Wichita Water Dept. 268-4563  
 City of Wichita Storm Sewer Maint. 268-4024  
 City of Wichita Storm Sewer Maint. 268-4090  
 City of Wichita Traffic Maint. 268-4034  
 Conoco Phillips Pipeline Co. 1-877-267-2290  
 Southern Star Pipeline Co. 529-6600  
 Kinder-Morgan Pipeline Co. 1-888-844-5658
2. Utility service lines, poles, valve boxes, meters, and etcetera are to be adjusted as necessary by others prior to construction unless the plans specifically call for their adjustment by the Contractor or unless the plans specifically identify a utility to be adjusted by its owner during construction. Existing utilities and their location, as shown on the plans, represent the best information obtainable for design. The Contractor will be required to work around existing utilities within the right-of-way which do not conflict with proposed construction.
3. Rubble from the removal of miscellaneous structures and excess excavation which is to be wasted shall be disposed of on sites to be provided by the Contractor. These sites shall be approved by the Engineer as to suitability, appearance and site location. Locations, in the opinion of the Engineer, that will leave an unsightly appearance will not be approved. All disposal sites must be approved by the Kansas Department of Health and Environment. Material either stockpiled or disposed of in a flood plain would require a Kansas State Board of Agriculture permit. Any material dumped in waters of the United States or wetlands is subject to U.S. Corps. of Engineers permitting regulations. Any material buried or stockpiled beyond approved construction limits would require additional archaeological investigations unless buried in a previously approved borrow location.
4. Trees and shrubs in public right-of-way which are in direct conflict with proposed new construction shall be removed by the Contractor with the Engineer's approval. Trees and shrubs which are not in direct conflict with proposed new construction shall be saved and protected from damage.
5. The Contractor shall give all property owners and/or tenants of developed property abutting the construction of this project a minimum of ten (10) days notice prior to start of construction.
6. The Contractor shall be responsible for preserving property irons. The Contractor will be required to re-establish any property irons which are damaged or destroyed by his construction operations. Such irons shall be re-established by a licensed land surveyor in accordance with state laws.
7. All existing and proposed erosion control measures including silt fencing, erosion control mat, straw bales, inlet barriers, and const. entrance shall be maintained throughout construction by the contractor and until project is accepted by the City of Wichita. The on-site engineer shall complete weekly reports on the status of erosion control measures. The contractor shall be required to comply with maintenance and/or replacement of erosion control measures as determined by the on-site engineer until project is accepted by City of Wichita. Maintenance and/or replacement of erosion control measures to be paid by L.S. bid item "Maintain Existing BMP's."
8. All excess excavation shall remain on-site and shall be stockpiled or spread at a location determined by the engineer.
9. All areas disturbed during construction shall be seeded as follows (Temporary Seeding):  
 Seed: Ryegrass: 5 lbs./1000 sq. ft.  
 All costs associated with seeding shall be included in bid item "Seeding". All seeding operations shall conform to City of Wichita Standard Specifications.
10. The Baseline for this project is the centerline of Maize Rd with the intersection of Maize Ct. = Sta. 20+00.
11. The Developer for this project is Daniel Ellert and may be reached at (316) 383-3332.



**Baughman**

Baughman Company, P.A. 315 Ellis St. Wichita, KS 67211 P 316-262-7271 F 316-262-0149  
 ENGINEERING | SURVEYING | PLANNING | LANDSCAPE ARCHITECTURE

