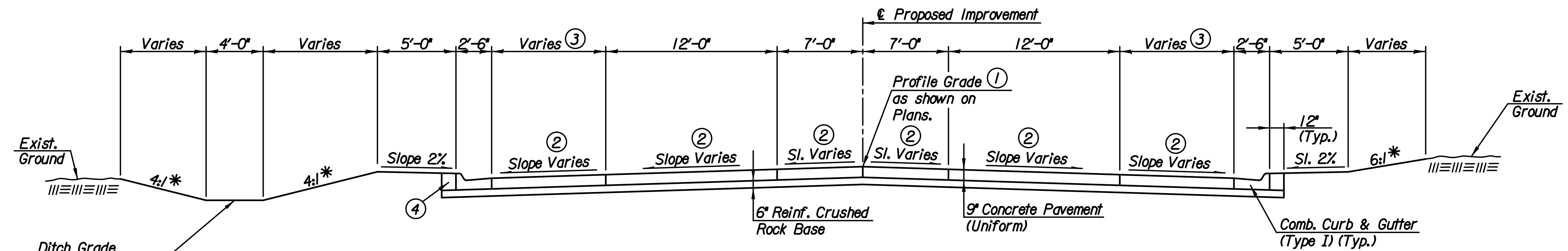


TYPICAL SECTION

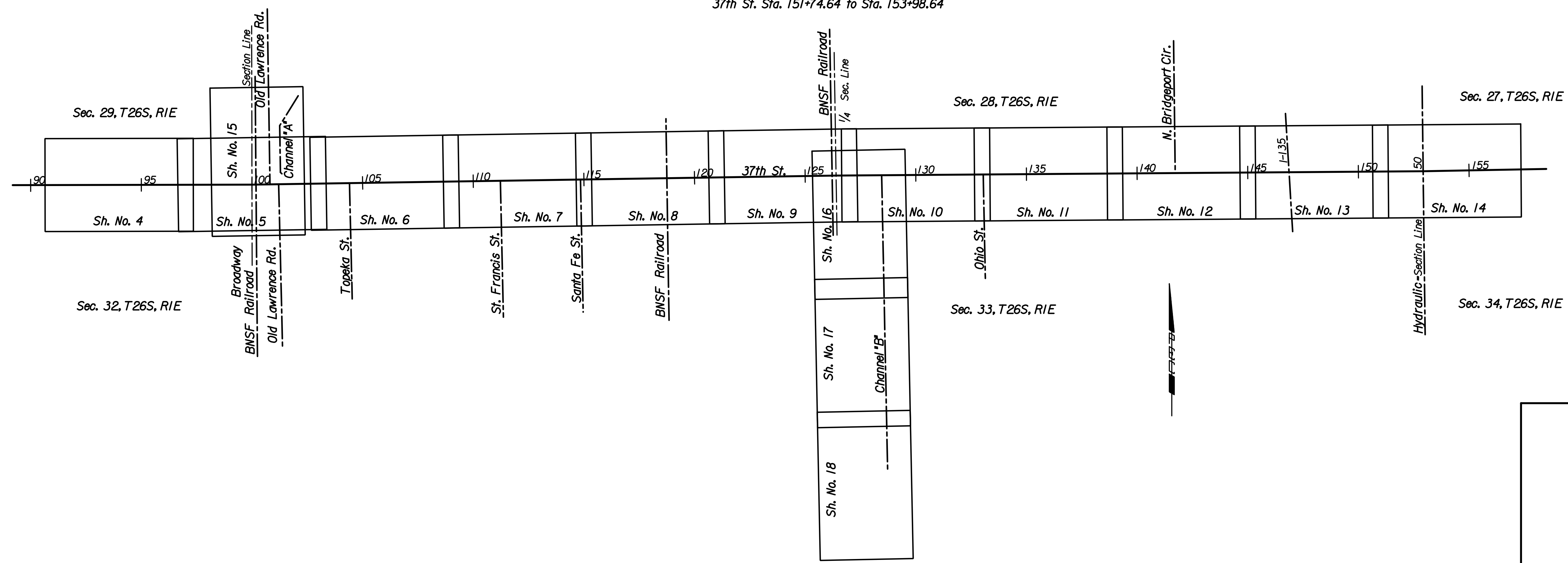
37th St. Sta. 95+28.50 to Sta. 99+17.35




TYPICAL SECTION

37th St. Sta. 99+57.03 to Sta. 99+93.88
37th St. Sta. 151+74.64 to Sta. 153+98.64

- * See Cross Sections for Variations.
- ① Profile Grade is the theoretical top of pavement elevation at CL.
- ② Cross Slope Varies thru Intersection.
- ③ Width Varies thru Intersection.
- ④ Backfill behind curb. Quantities for this work are included in the Earthwork Summary Table.
- ⑤ Cross Slope Varies from 0.00% at Sta. 100+20 to -3.00% at Sta. 101+25.
- ⑥ Cross Slope Varies from -3.00% at Sta. 125+00 to 0.00% at Sta. 126+20. Cross Slope Varies from 0.00% at Sta. 126+35 to -3.00% at Sta. 127+50.
- ⑦ Width Varies from 30'-0" at Sta. 154+33.59 to 28'-0" at Sta. 155+09.22.
- ⑧ Cross Slope Varies from -3.00% at Sta. 154+50 to -2.53% at Sta. 155+09.22.
- ⑨ Cross Slope Varies from -3.00% at Sta. 154+50 to -3.36% at Sta. 155+09.22.



Plotted By: svb Date: 8/15/2013 10:40:07 AM
FILE: I:\2008\0820\Typicals\08207-TypSec 1.dgn

No.	Revision	By	Date
37TH STREET NORTH			
TYPICAL SECTIONS			
GARY JANZEN, P.E.-CITY ENGINEER CITY OF WICHITA PROJECT NO. 472-84692			
 PEC PROFESSIONAL ENGINEERING CONSULTANTS, P.A. 303 SOUTH TOPEKA WICHITA, KS 67202 316-262-2691 www.pec1.com			
Designed by	JPS	Job No.	08207
Drawn by	SVB	Date	August, 2013
			Sht. 2 of 193