

UTILITIES

AT&T, Wichita Central Unit
154 N. Broadway, Room 210
Wichita, KS 67202
Jason Edwards (316) 268-2008

Wichita Water Utilities
8th Floor - City Hall
455 N. Main St.
Wichita, KS 67202
LaDonna Lawrenz (San. Sewer) or
Greg Laley (Water) (316) 268-4555

Pratt Industries
700 E. 37th St. N.
Wichita, KS 67219
Harry Conway (316) 831-5389

Cox Communications
901 George Washington Blvd.
Wichita, KS 67211
Marc Henderson (316) 260-7745

LightCore
1151 CenturyTel Dr., Bldg. A
Wentzville, MO 63385
Charlie Stochowiak (314) 880-1880

BNSF Railway
301 E. 5th St.
Augusta, KS 67010
Brian Delaware (316) 775-4062

Kansas Gas Service
1021 E. 26th St. N.
Wichita, KS 67219
Jim Coe (316) 832-3126

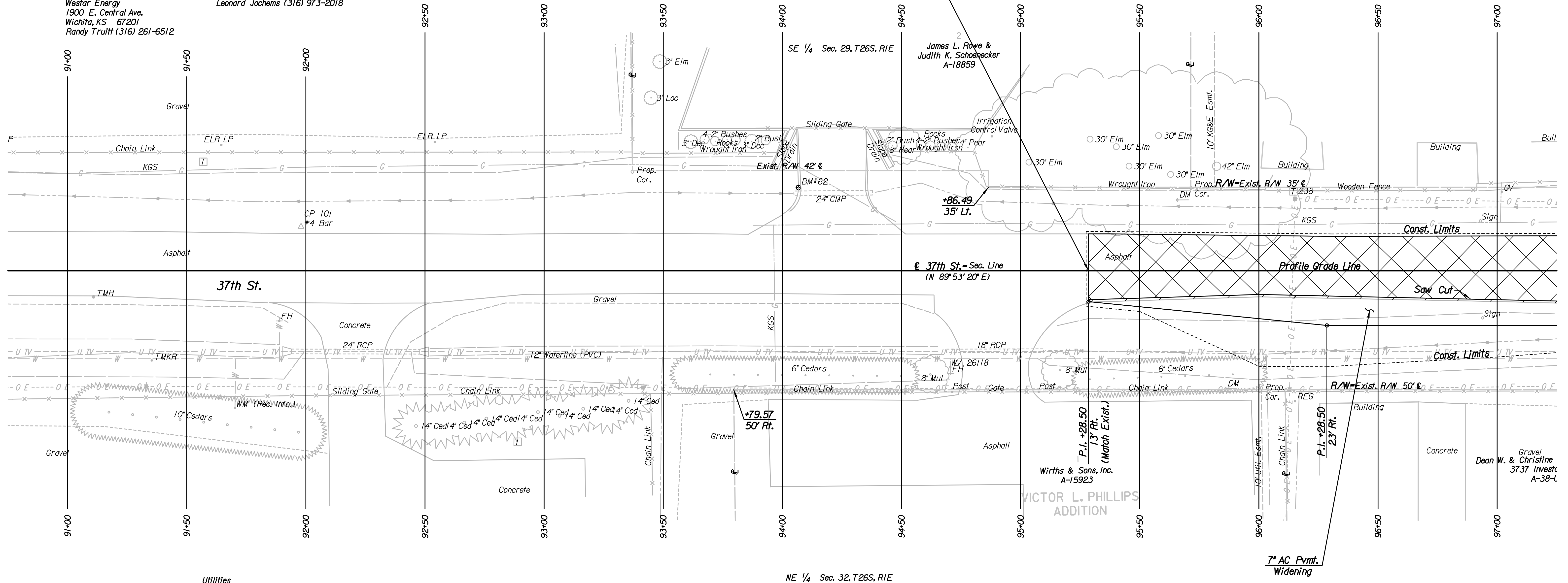
Verizon
2400 N. Glenville Dr.
Richardson, TX 75082
Don Torbett (918) 877-7333

Level 3 Communications, LLC
266 N. Main, Suite 100
Wichita, KS 67202
Steve Lindner (316) 858-6137

USD 259 - Wichita Public Schools
3850 N. Hydraulic
Wichita, KS 67219
Leonard Jochems (316) 973-2018

Westar Energy
1900 E. Central Ave.
Wichita, KS 67201
Randy Truitt (316) 261-6512

P.I. @ Sta. 73+51.79=
5/4 Cor. Sec. 29, T26S, R1E
1. See References below



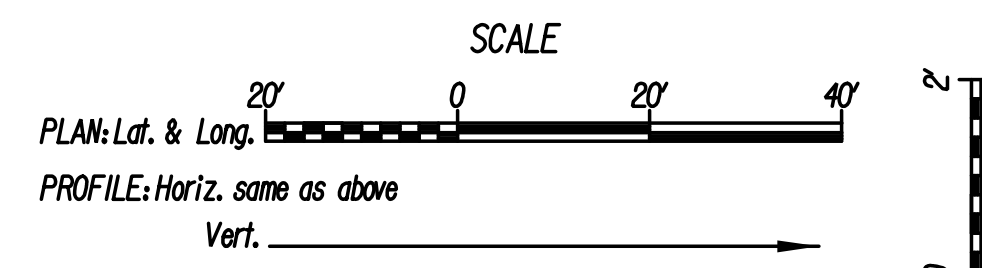
Utilities
Gas Kansas Gas Service
Power Westar Energy
Telephone AT&T, Wichita Central Unit
Water Wichita Water Utilities

REMOVAL OF EXISTING STRUCTURES *		
STATION	SIDE	ITEM
96+94	Rt.	Sign

* For Information Only

LEGEND

- Pavement Removal
- Mill/Overlay



- S 1/4 Cor. Sec. 29, T26S, R1E
1. Found Chiseled * on Concrete Pavement
 2. N 1,709,693.9662 E 1,646,272.2103
 3. City Bench Mark Disc
 4. Chiseled * on SW corner of Bridge
 5. Centerline of Construction Joint on Arkansas Ave.
 6. Chiseled * on Top of Curb
 7. Centerline of 37th St. N.
 8. At middle fork of Chisholm Creek
- | | |
|---------|-----|
| 27.00' | ENE |
| 31.00' | WNW |
| 0.15' | E |
| 50.00' | SW |
| 160.00' | S |

BM*62 Chiseled * on W curb of gated asphalt entrance,
35' N of 37th St. N., 500' W of Broadway Ave.
35' Lt. @ Sta. 94+07 Elev.=1322.04

Revision		By	Date
37TH STREET NORTH			
PLAN			
STA. 91+00 TO STA. 97+00			
GARY JANZEN, P.E.-CITY ENGINEER CITY OF WICHITA PROJECT NO. 472-84692			
PEC PROFESSIONAL ENGINEERING CONSULTANTS, P.A. 303 SOUTH TOPEKA WICHITA, KS 67202 316-262-2691 www.pec1.com			
Designed by	JPS	Job No.	08207
Drawn by	SVB	Date	August, 2013
			Sht. 4 of 193

Plotted By: svb Date: 8/15/2013
 FILE: I:\2008\08207\Plan\08207-PL19L.dgn