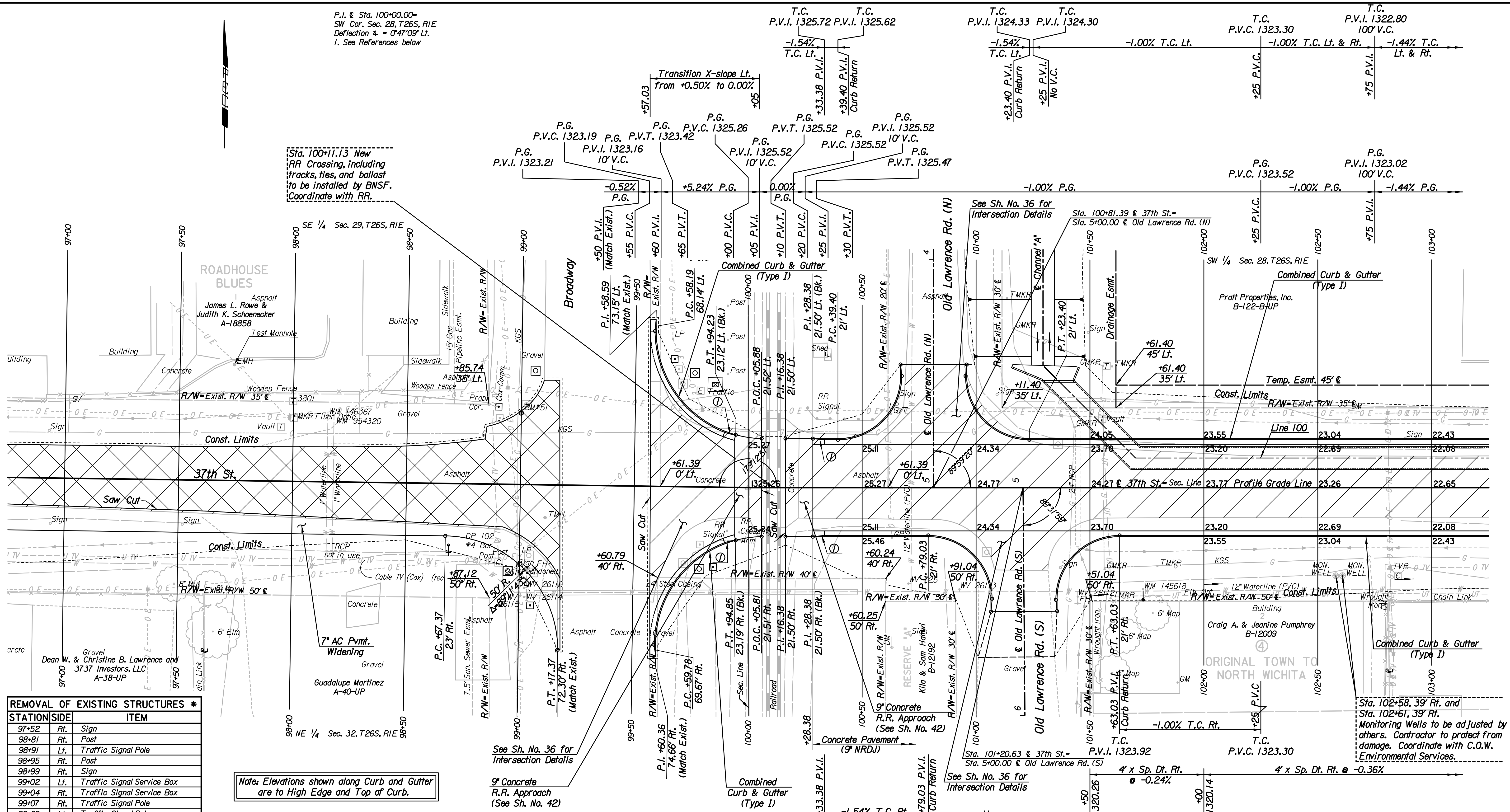


P.I. & Sta. 100+00.00=
SW Cor. Sec. 28, T26S, R1E
Deflection $\alpha = 0^{\circ}47'09''$ Lt.
1. See References below

Sta. 100+11.13 New
RR Crossing, including
tracks, ties, and ballast
to be installed by BNSF.
Coordinate with RR.



REMOVAL OF EXISTING STRUCTURES *		
STATION	SIDE	ITEM
97+52	Rt.	Sign
98+81	Rt.	Post
98+91	Lt.	Traffic Signal Pole
98+95	Rt.	Post
98+99	Rt.	Sign
99+02	Lt.	Traffic Signal Service Box
99+04	Rt.	Traffic Signal Service Box
99+07	Rt.	Traffic Signal Pole
99+69	Lt.	Traffic Signal Pole
99+71	Lt.	Traffic Signal Service Box
99+72	Rt.	Traffic Signal Service Box
99+79	Rt.	Traffic Signal Pole
100+42	Lt.	Guard Rail
100+66	Lt.	Sign
101+05	Rt.	Traffic Signal Service Box
101+09	Lt.	Sign
101+36	Lt.	Traffic Signal Service Box
101+37	Rt.	Sign
101+45	Cln.	24" RCP
102+88	Lt.	Sign

Note: Elevations shown along Curb and Gutter are to High Edge and Top of Curb.

Utilities
Gas Kansas Gas Service
Power Westar Energy
Telephone AT&T, Wichita Central Unit
Television Cox Communications
Water Wichita Water Utilities

Datum Benchmark:
BM#51 C.O.W. Disc in paved road on S side of Traffic Signal Manhole at NW corner of 37th St. N. and Broadway Ave. 31' Lt. & Sta. 99+00 Elev. = 1322.57

- SW Cor. Sec. 28, T26S, R1E
1. Found Chiseled "x" on Concrete Pavement
2. N 1,709,699.1057 E 1,648,920.4183
3. Centerline of 37th St. N.
4. PK Nail in NE Face of Power Pole
5. PK Nail in N face of Light Pole
6. Chiseled "x" on Concrete Base RR Signal
7. Center of W Rail of RR Track

LEGEND

- Pavement Removal
- Mill/Overlay
- 5' transition from Combined Curb & Gutter (Type I) to no curb.

37TH STREET NORTH

PLAN
STA. 97+00 TO STA. 103+00

GARY JANZEN, P.E.-CITY ENGINEER
CITY OF WICHITA PROJECT NO. 472-84692

PEC
PROFESSIONAL ENGINEERING CONSULTANTS, P.A.
303 SOUTH TOPEKA WICHITA, KS 67202
316-262-2691 www.pec1.com

Designed by	JPS	Job No.	08207	Sheet	5 of 193
Drawn by	SVB	Date	August, 2013		

Plotted By: svb Date: 8/19/2013 4:03:39 PM
FILE: I:\2008\08207\Plan\08207-PL97.dgn