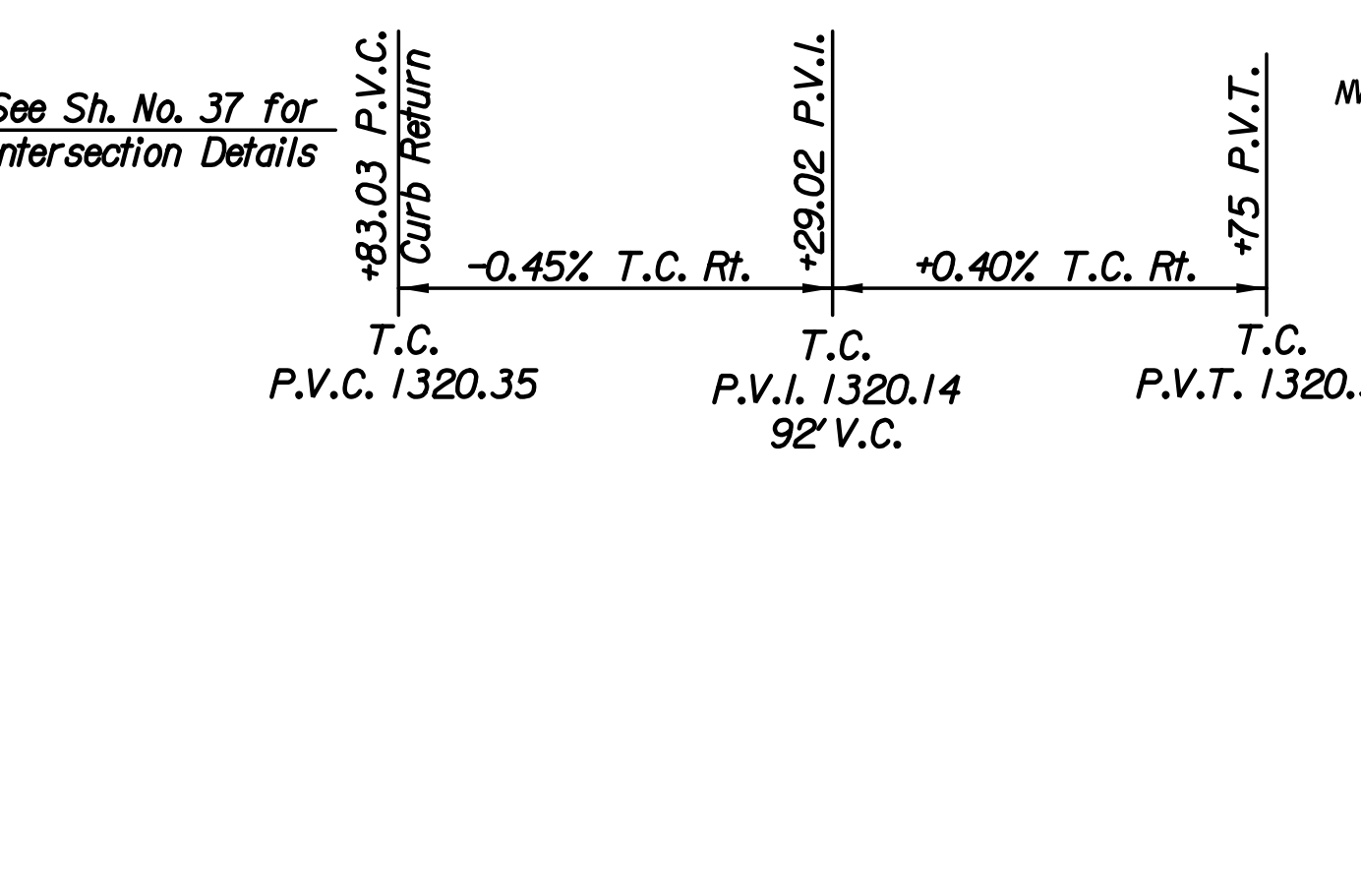
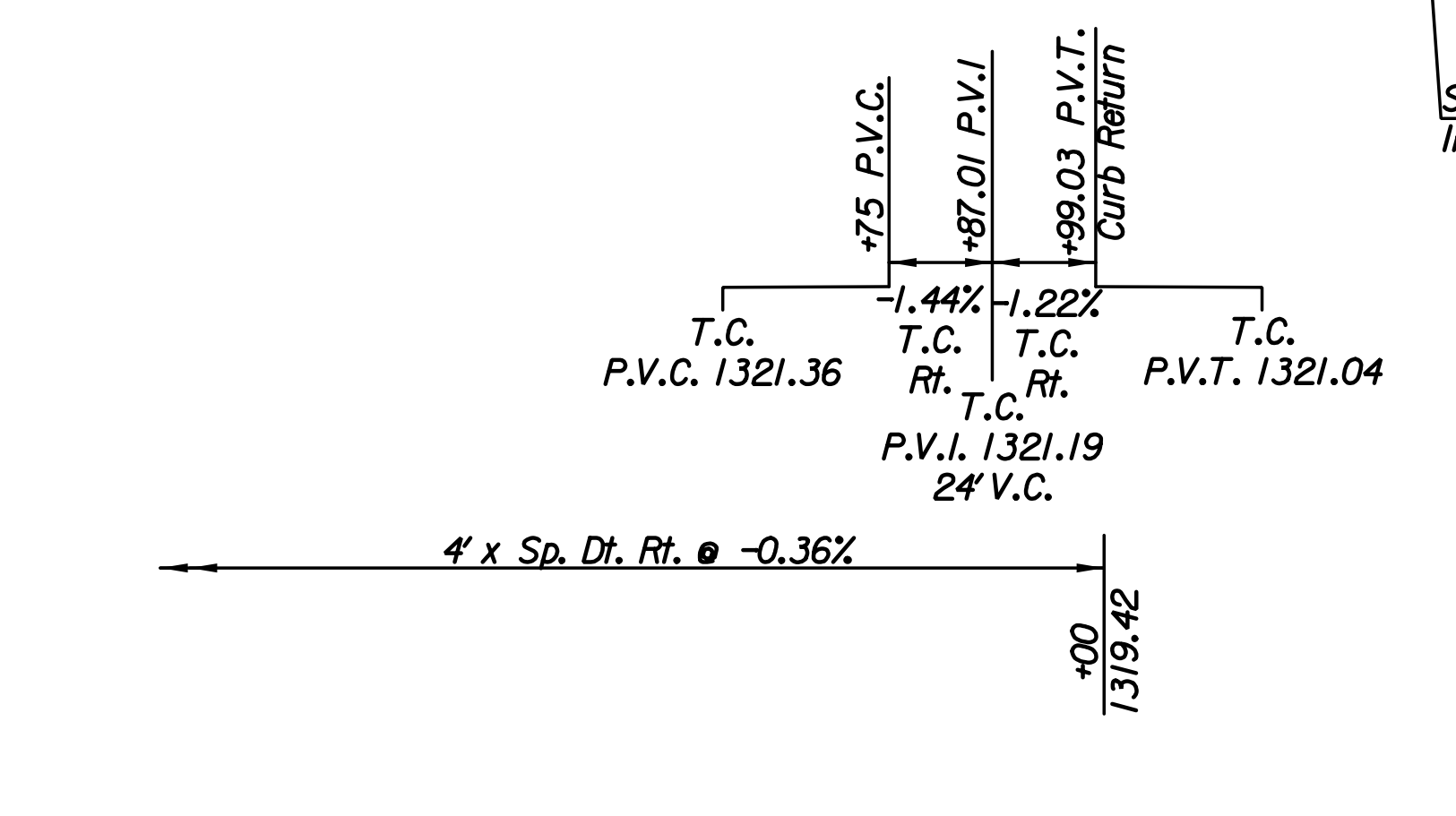
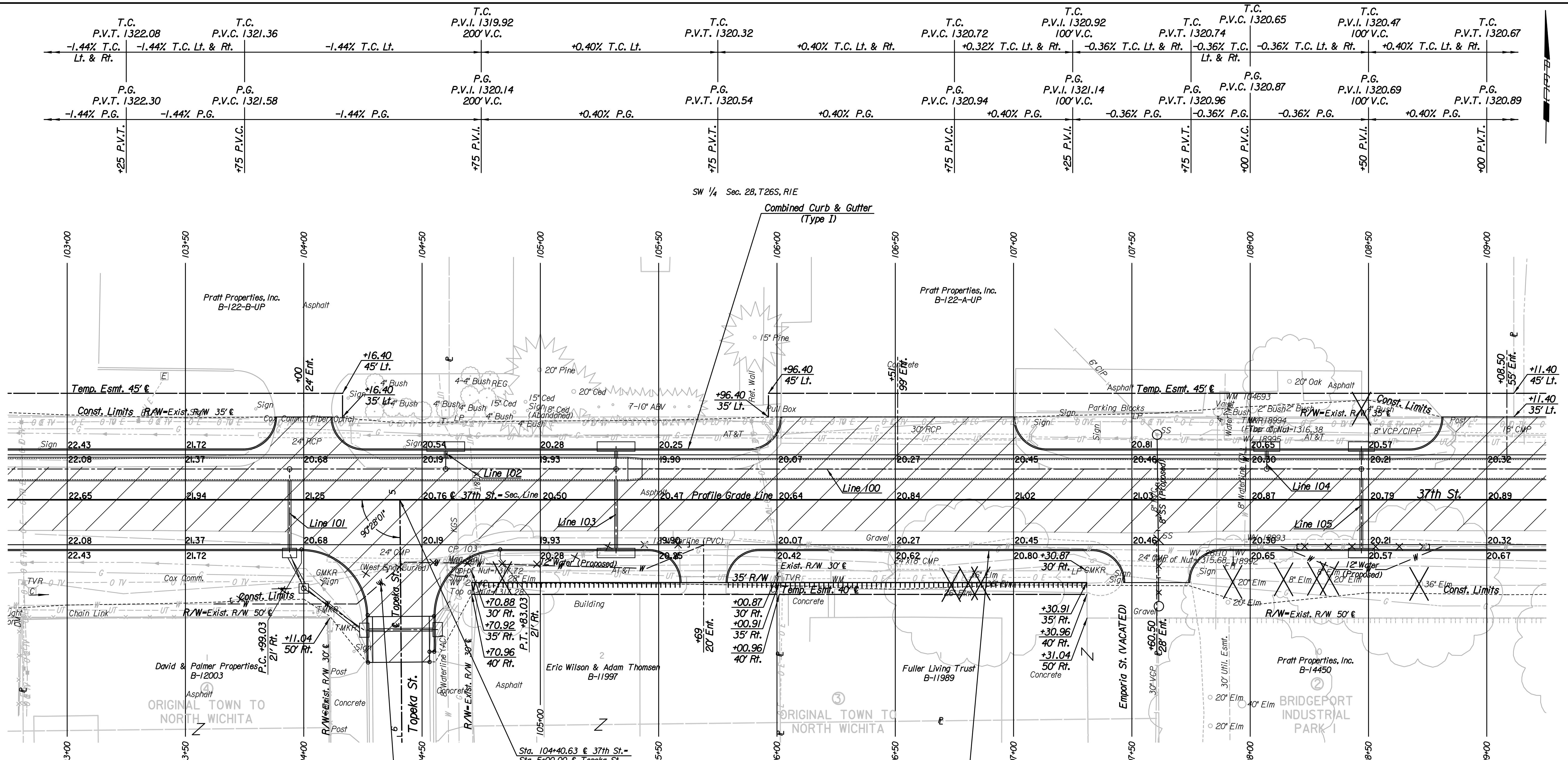


Plotted By: svb Date: 8/15/2013 11:17:00 AM
 FILE: I:\2008\0820\Plan\08207-PL103.dgn



Gas
 Power
 Sanitary Sewer
 Telephone
 Television
 Water

Utilities
 Kansas Gas Service
 Westar Energy
 Wichita Water Utilities
 AT&T, Wichita Central Unit
 Cox Communications
 Wichita Water Utilities

REMOVAL OF EXISTING STRUCTURES *		
STATION	SIDE	ITEM
104+02	Lt.	24" RCP
104+07	Rt.	Sign
104+41	Rt.	24" CMP
104+43	Lt.	Sign
104+61	Rt.	Sign
106+52	Lt.	30" RCP
106+59	Rt.	24" x 18" CMP
107+08	Lt.	Sign
107+19	Lt.	Sign
107+37	Lt.	Sign
107+40	Rt.	Sign
107+42	Rt.	Sign
107+61	Rt.	24" CMP
107+78	Lt.	Sign
108+83	Rt.	Post

* For Information Only

LEGEND

Pavement Removal

- Denotes Trees to be Removed

No.	Revision	By	Date
37TH STREET NORTH			
PLAN			
STA. 103+00 TO STA. 109+00			
GARY JANZEN, P.E.-CITY ENGINEER CITY OF WICHITA PROJECT NO. 472-84692			
PEC PROFESSIONAL ENGINEERING CONSULTANTS, P.A. 303 SOUTH TOPEKA WICHITA, KS 67202 316-262-2691 www.pec1.com			
Designed by	JPS	Job No.	08207
Drawn by	SVB	Date	August, 2013
			Sh. 6 of 193