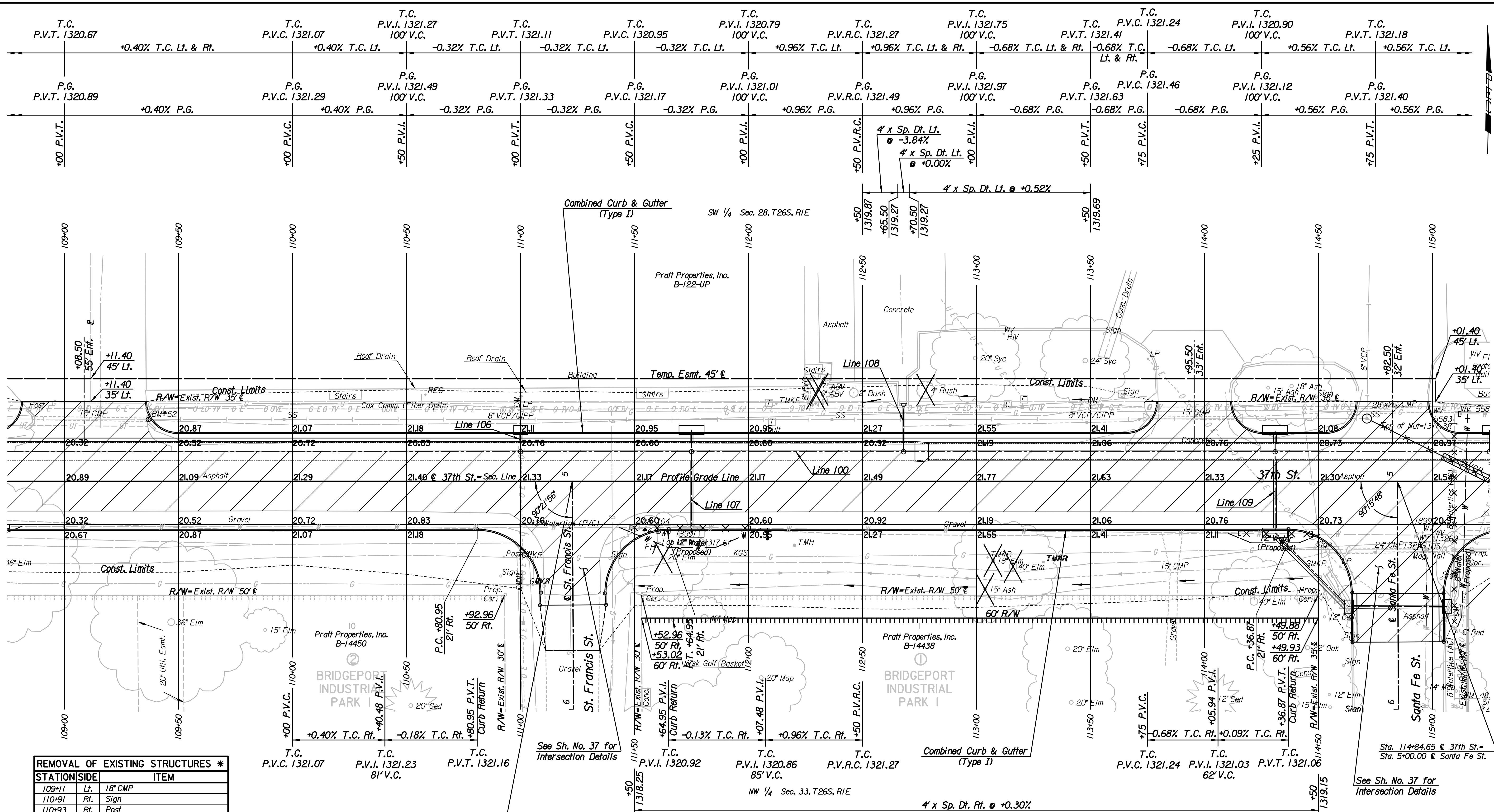


10:07:27 AM
 Date: 8/2/2013
 FILE: I:\2008\0820\Plan\08207-PL109.dgn



REMOVAL OF EXISTING STRUCTURES *		
STATION	SIDE	ITEM
109+11	Lt.	18" CMP
110+91	Rt.	Sign
110+93	Rt.	Post
110+99	Rt.	Sign
111+39	Rt.	Sign
113+64	Lt.	Sign
113+87	Rt.	15" CMP
113+95	Lt.	15" CMP
114+48	Rt.	Sign
114+80	Rt.	24" CMP
114+83	Lt.	28" x 20" CMP

* For Information Only
 BM#52 Chiseled "D" on Concrete Headwall on N side 37th St. N., 190' W of St. Francis St. 27' Lt. @ Sta. 109+37 Elev. = 1321.62

- Utilities**
- Gas: Kansas Gas Service
 - Power: Westar Energy
 - Sanitary Sewer: Wichita Water Utilities
 - Telephone: AT&T, Wichita Central Unit
 - Television: Cox Communications
 - Water: Wichita Water Utilities

LEGEND

- Pavement Removal
- Denotes Trees to be Removed

37TH STREET NORTH

PLAN
 STA. 109+00 TO STA. 115+00

GARY JANZEN, P.E.-CITY ENGINEER
 CITY OF WICHITA PROJECT NO. 472-84692

PROFESSIONAL ENGINEERING CONSULTANTS, P.A.
 303 SOUTH TOPEKA WICHITA, KS 67202
 316-262-2691 www.pec1.com

Designed by JPS Job No. 08207
 Drawn by SVB Date August, 2013

Sheet 7 of 193