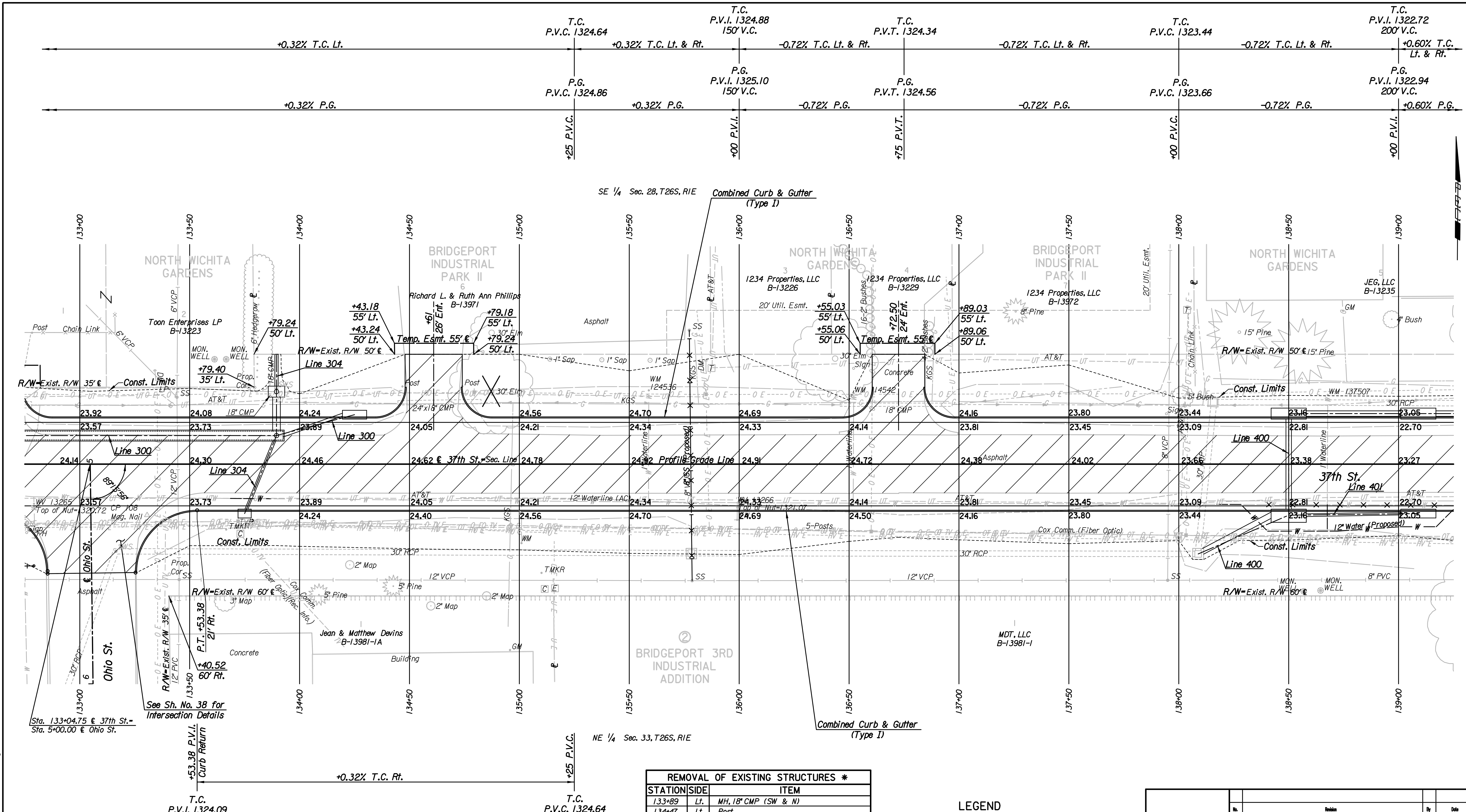


Plotted By: svb Date: 8/15/2013  
 FILE: I:\2008\08207\Plan\08207-PL133.dgn



**REMOVAL OF EXISTING STRUCTURES \***

STATION	SIDE	ITEM
133+89	Lt.	MH, 18" CMP (SW & N)
134+47	Lt.	Post
134+64	Lt.	24" x 18" CMP
134+74	Lt.	Post
136+36	Rt.	5-Posts
136+52	Lt.	Sign
136+71	Lt.	18" CMP
137+94	Lt.	Sign
138+13	Cln.	30" RCP SWS
138+16	Lt.	MH, 30" x 176 LF RCP East

**LEGEND**

Pavement Removal

- Denotes Trees to be Removed

- Utilities**
- Gas Kansas Gas Service
  - Power Westar Energy
  - Sanitary Sewer Wichita Water Utilities
  - Telephone AT&T, Wichita Central Unit
  - Television Cox Communications
  - Water Wichita Water Utilities

\* For Information Only

No.	Revision	By	Date
37TH STREET NORTH			
<b>PLAN</b>			
STA. 133+00 TO STA. 139+00			
GARY JANZEN, P.E.-CITY ENGINEER CITY OF WICHITA PROJECT NO. 472-84692			
<b>PEC</b> PROFESSIONAL ENGINEERING CONSULTANTS, P.A. 303 SOUTH TOPEKA WICHITA, KS 67202 316-262-2691 www.pec1.com			
Designed by	JPS	Job No.	08207
Drawn by	SVB	Date	August, 2013
			Sht. 11 of 193