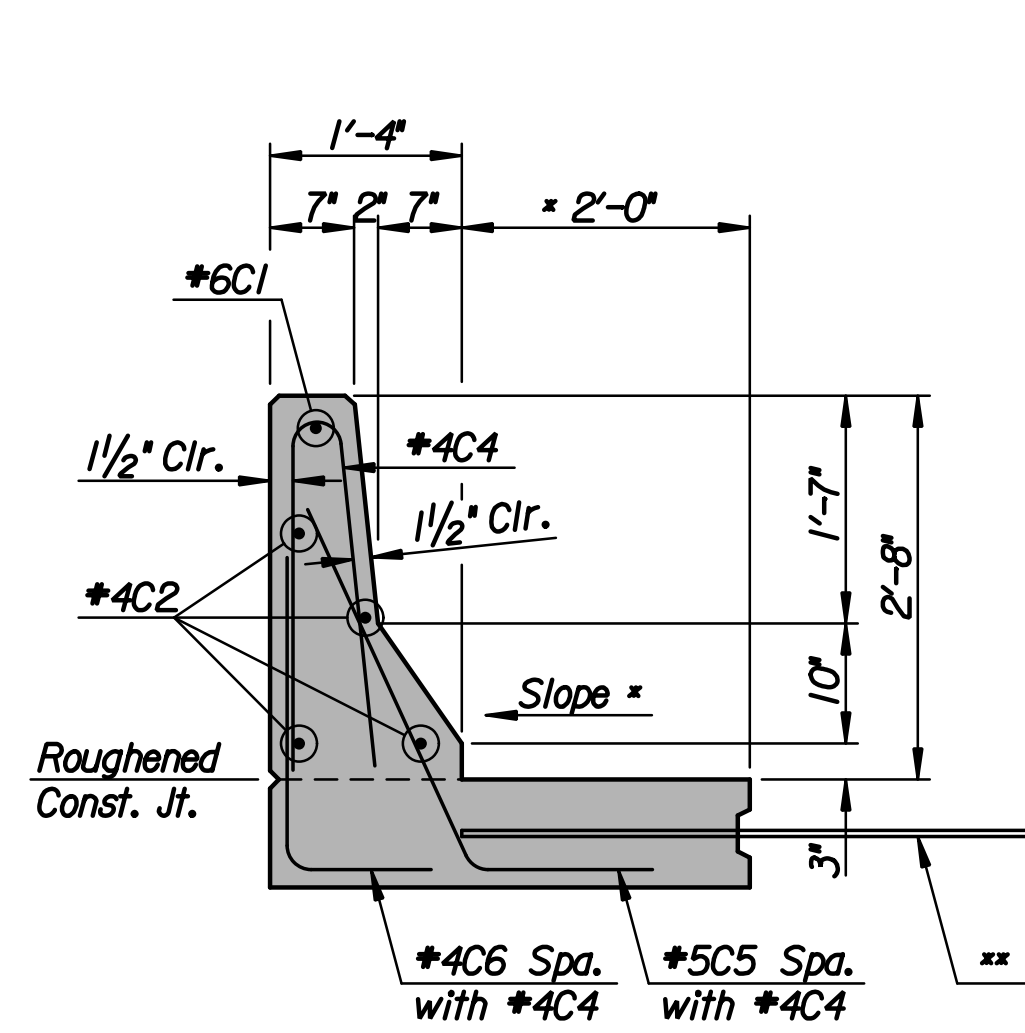
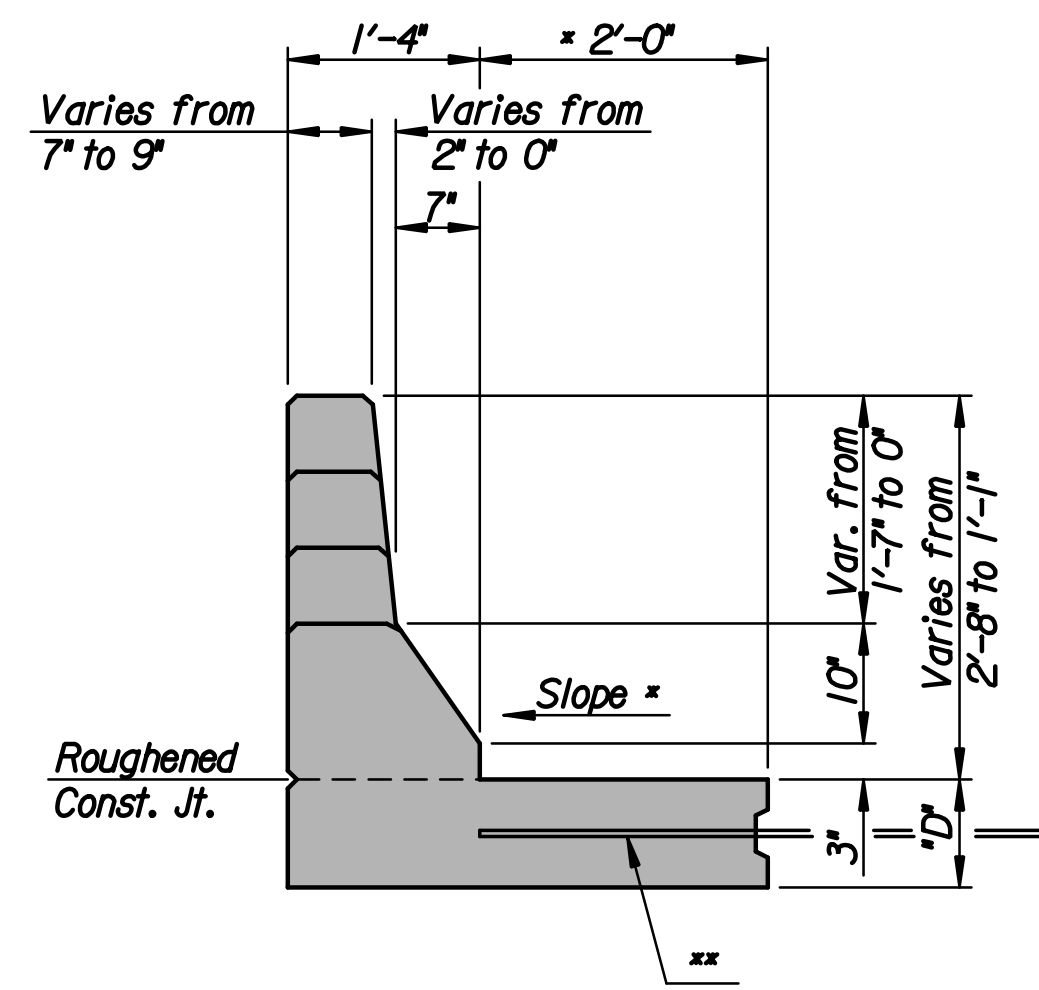


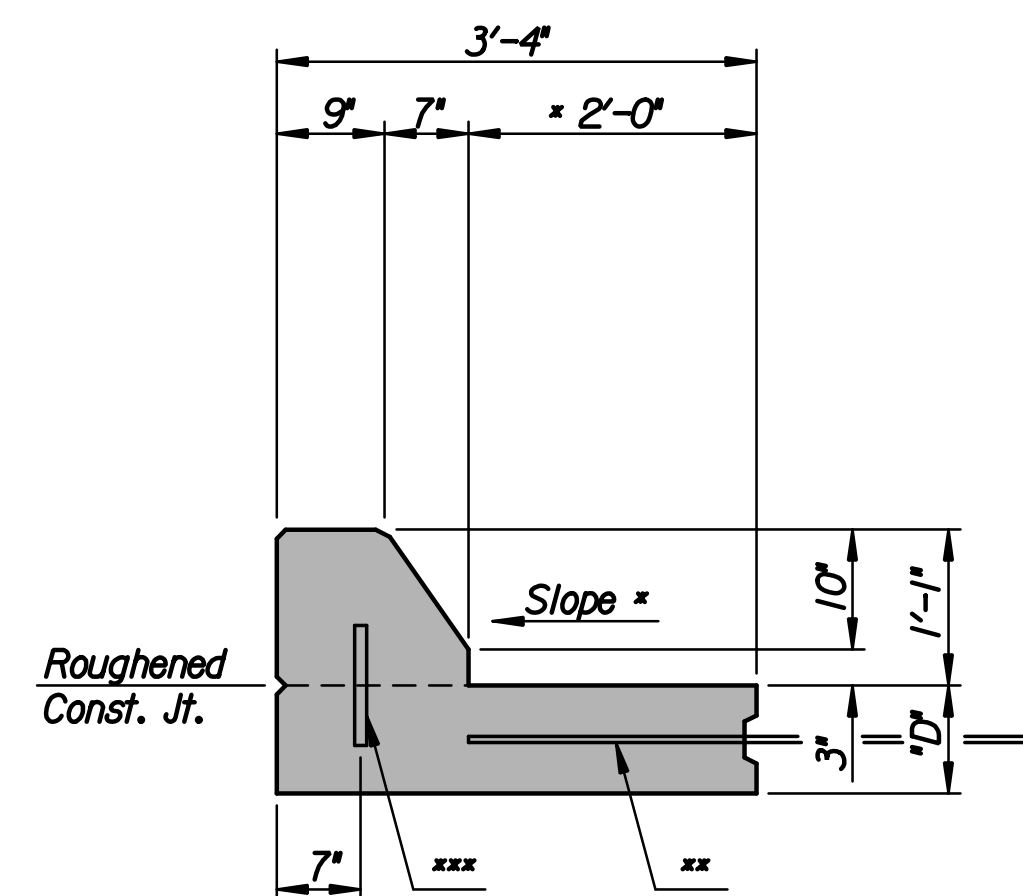
Plotted By: svb Date: 8/3/2013 10:15:54 PM
 FILE: I:\2008\0820\Bridges\RAS\Final\Barrier Sections.dgn



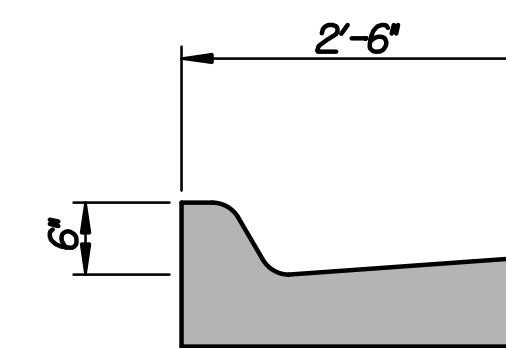
SECTION A-A



SECTION B-B



SECTION C-C



SECTION D-D

* Slope to match adjacent pavement.

** Longitudinal Construction Joints and #4x4'-0" bars at 2'-6" centers where Concrete Pavement is constructed. See Plan Sheet for locations of Tie Bar omission where adjacent to Concrete Pavement.

*** Optional Construction Joint from Section C-C to Section D-D with #8x0'-10" bars at 2'-6" centers.


Note: "D"=9"

General Notes:

The Concrete Safety Barrier shall be constructed of Class AAA Concrete (AE) and Reinforcing Steel complying to A.S.T.M. Designation A-615 Grade 60. All Bar clearances shall be 1/2" unless otherwise noted.

The Exposed Faces of the Barrier shall be Grooved with a 3/4" Chamfer Strip at Contraction Joint locations. Where adjacent to Asphalt Pavement, Joints shall be spaced as shown (7'-6" Intervals). Where adjacent to Concrete Pavement, Contraction Joints shall Match those in the adjacent Pavement.

The Bid Item "Concrete Safety Barrier" shall be measured per lineal foot as per Plan. The amount of completed and accepted work, measured by lineal foot, shall be paid for at the Contract Unit Price Bid for "Concrete Safety Barrier". This Price shall be considered full compensation for furnishing all material, equipment and labor necessary to complete the work.

No.	Revision	By	Date
37TH STREET NORTH			
CONCRETE SAFETY BARRIER SECTIONS			
GARY JANZEN, P.E.-CITY ENGINEER CITY OF WICHITA PROJECT NO. 472-84692			
 PROFESSIONAL ENGINEERING CONSULTANTS, P.A. 303 SOUTH TOPEKA WICHITA, KS 67202 316-262-2691 www.pec1.com			
Designed by	JPS	Job No.	08207
Drawn by	SVB	Date	August, 2013
			Sht. 60 of 193