

N: 1,709,727.2339, E: 1,651,472.5836  
 @ 37th St. N., Sta. 125+52.29, 11.8' Rt.  
 Adjust Existing Water Valve Box (C.O.W. #13262)  
 Existing Top of Box Elev. = 1323.82  
 Proposed Top of Box Elev. = 1323.25  
 Difference = -0.57'

N: 1,709,729.9056, E: 1,651,519.5077  
 @ 37th St. N., Sta. 125+99.25, 9.9' Rt.  
 Adjust Existing Water Valve Box (C.O.W. #13263)  
 Existing Top of Box Elev. = 1323.97  
 Proposed Top of Box Elev. = 1323.82  
 Difference = -0.15'

WATERLINE ADJUSTMENT NO. 13  
 See sheet no. C23

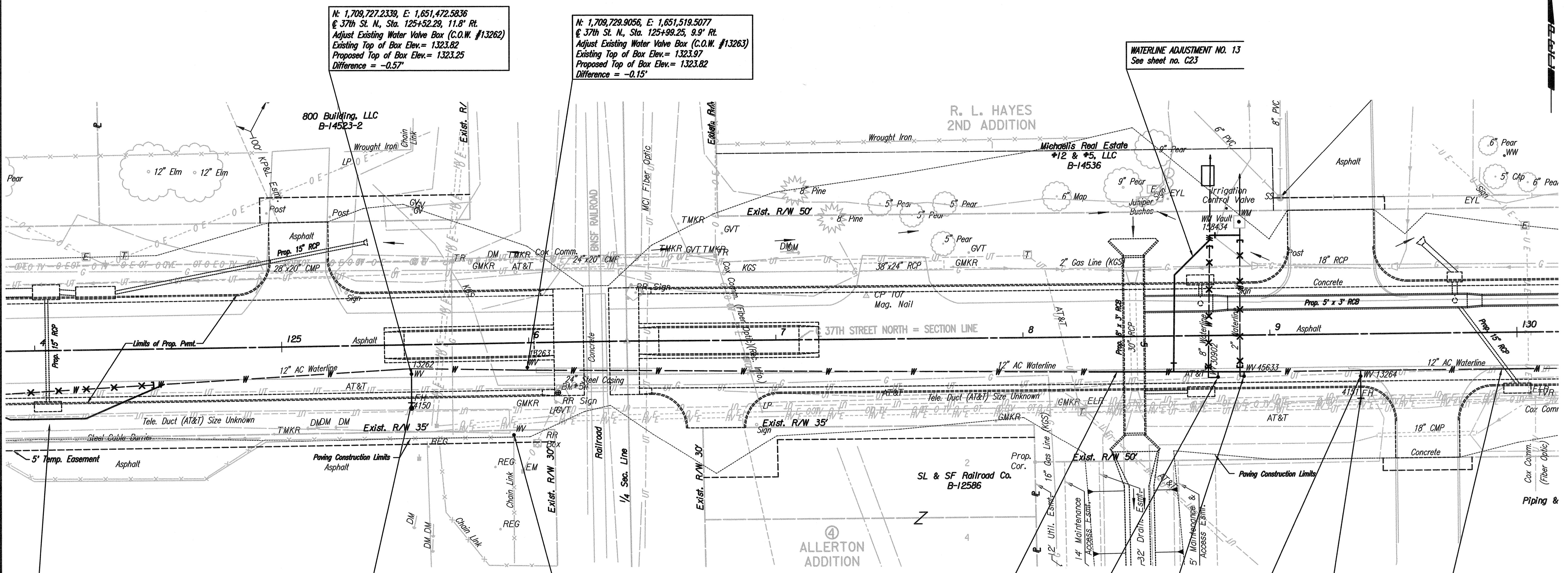
N: 1,709,715.7352, E: 1,651,472.6449  
 @ 37th St. N., Sta. 125+52.17, 23.3' Rt.  
 FH ADJUSTMENT NO. 5  
 Adjust Existing Fire Hydrant Bury (C.O.W. #4150)  
 Total Adjustment = +0.50'  
 See detail, sheet no. C31.

WATERLINE ADJUSTMENT NO. 12  
 See sheet no. C23

N: 1,709,725.4826, E: 1,651,799.0608  
 @ 37th St. N., Sta. 128+78.85, 16.7' Rt.  
 Remove Existing Water Valve (C.O.W. #30912)  
 and Valve Box. (Salvage to Wichita Water Utilities)  
 See sheet no. C23

N: 1,709,725.6343, E: 1,651,856.7922  
 @ 37th St. N., Sta. 129+36.58, 17.0' Rt.  
 Adjust Existing Water Valve Box (C.O.W. #13264)  
 Existing Top of Box Elev. = 1324.14  
 Proposed Top of Box Elev. = 1322.47  
 Difference = -1.67'

N: 1,709,725.7555, E: 1,651,809.5781  
 @ 37th St. N., Sta. 128+89.37, 16.5' Rt.  
 Remove Existing Water Valve (C.O.W. #45633)  
 and Valve Box. (Salvage to Wichita Water Utilities)  
 See sheet no. C23



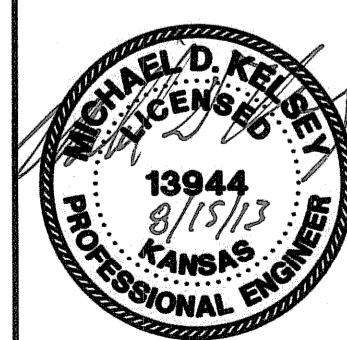
WATERLINE ADJUSTMENT NO. 11  
 See sheet no. 22

WATERLINE ADJUSTMENT NO. 14  
 See sheet no. C24

No Adjustments Needed

No Adjustments Needed

X = Denotes Pipe to be abandoned in place.  
 □ = Denotes Cap/Plug by the contractor  
 (Includes removal of existing pavement and replacement with temporary pavement.)



No.	Revision	By	Date
<b>37TH STREET NORTH - BROADWAY TO HYDRAULIC</b> <b>WATERLINE MODIFICATIONS</b> <b>MISCELLANEOUS ADJUSTMENT PLANS</b> <b>124+00 to 130+00</b> GARY JANZEN, P.E. - CITY ENGINEER CITY OF WICHITA PROJECT NO. 448-90581			
		PROFESSIONAL ENGINEERING CONSULTANTS, P.A. 303 SOUTH TOPEKA WICHITA, KS 67202 316-262-2691 www.pec1.com	
Designed by	MDK, SAD	Job No.	35-08207-0042
Drawn by	CSL, JAN	Date	December 2011
			Sht. C9 of 34

Saved: 07-11-2013 10:53:57 AM by REJ  
 Plot Scale: 1:20 08-14-2013 11:10:59 AM by REJ  
 C:\2008\08207\Waterline\_Adjustment\_Plans\08207-C09-WPlan06