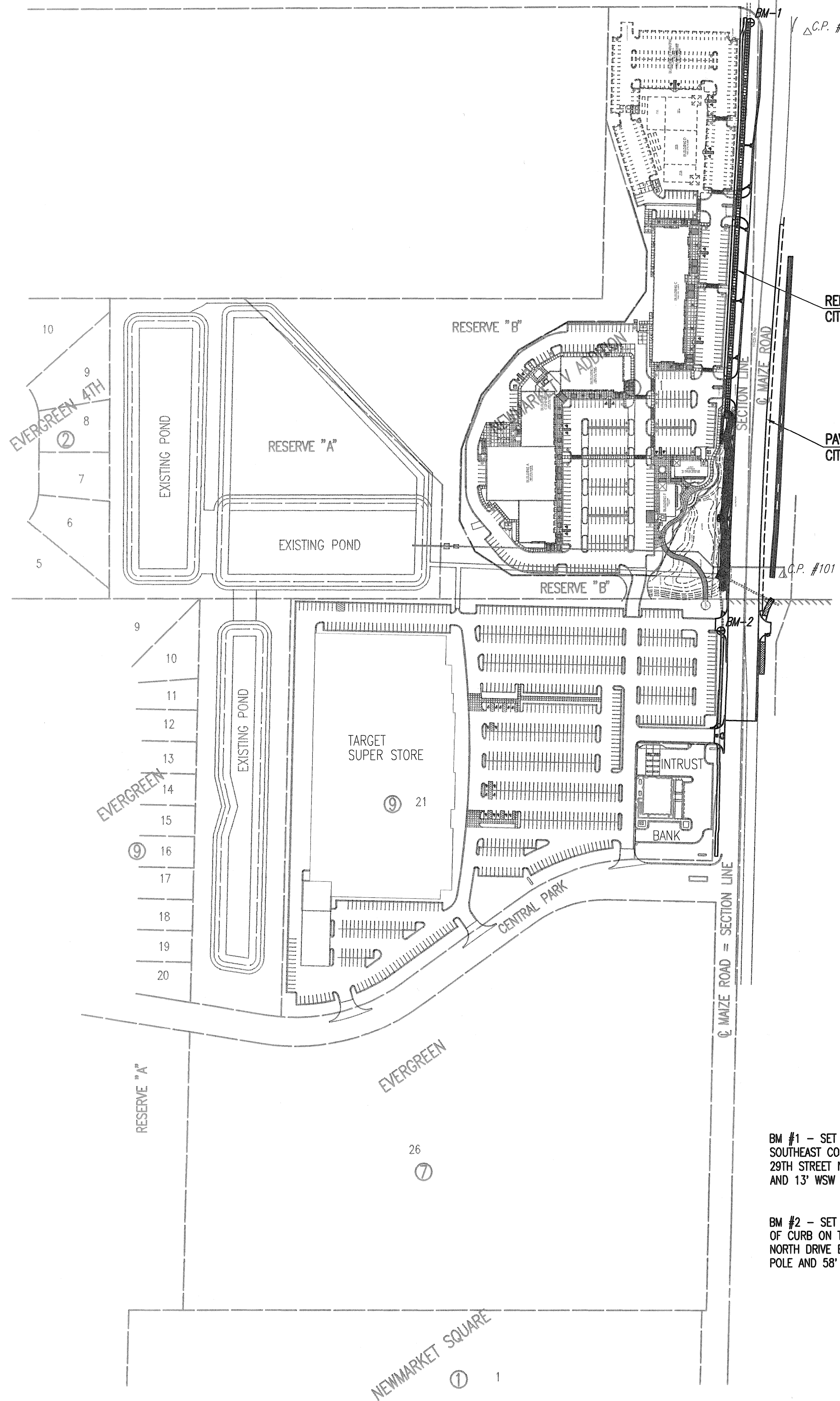


© 29TH STREET NORTH = SECTION LINE



REINFORCED CONCRETE BOX IMPROVEMENTS
CITY OF WICHITA PROJ. NO. 472-84607

PAVING IMPROVEMENTS
CITY OF WICHITA PROJ. NO. 472-84607

BENCHMARK LIST

BM #1 - SET BY RUGGLES & BOHM. CHISELED SQUARE ON SOUTHEAST CORNER OF RCB HEADWALL AT THE SOUTHWEST CORNER OF 29TH STREET N. AND MAIZE ROAD, 9' SW OF A TRAFFIC SIGNAL POLE AND 13' WSW OF A TRAFFIC SIGNAL MANHOLE.
ELEV. = 1353.30 (NAVD 88)

BM #2 - SET BY RUGGLES & BOHM. CHISELED SQUARE ON THE TOP OF CURB ON THE WEST CURB RETURN ON THE SOUTH SIDE OF THE NORTH DRIVE ENTRANCE TO 2727 N. MAIZE ROAD, 31' NW OF A LIGHT POLE AND 58' SSW OF A MANHOLE.
ELEV. = 1352.44 (NAVD 88)

CONTROL POINTS

Pt. No. 100 (NOT SHOWN)
SET PK NAIL
1. 1 1/2' OFF WEST EDGE ASPHALT SIDEWALK.
2. 23.50' WEST TO CENTER OF NORTH END RCE.
3. 34.10' SOUTHEAST TO NORTHWEST CORNER SQUARE POWER POLE.

Pt. No. 101
SET PK NAIL
1. 13.50' EAST TO CENTER TELEPHONE MANHOLE.
2. 40.25' NORTHEAST TO PK NAIL IN POWER POLE WEST FACE.
3. 1 1/2' OFF WEST EDGE ASPHALT SIDEWALK.

Pt. No. 102
SET PK NAIL
1. 1 1/2' OFF WEST EDGE ASPHALT SIDEWALK.
2. 13.50' EAST TO CENTER TELEPHONE MANHOLE.
3. 50.20' NORTHEAST TO CENTER OF SSM.

GENERAL NOTES

- ALL ELEVATIONS SHOWN ARE NAVD88. (NAVD88 -0.47" (0.143 METERS, PER VERTCON FROM NGS WEBSITE) TO NGVD29 - 1187.4=CITY DATUM).
- THE CONTRACTOR SHALL NOT START WORK ON THE PROJECT UNTIL THE PROJECT INSPECTOR IS ASSIGNED AND IS PRESENT ON THE SITE. ANY WORK DONE WITHOUT INSPECTION WILL BE REQUIRED TO BE UNCOVERED FOR INSPECTION.
- ALL CONSTRUCTION WORK AND MATERIAL IN THIS PROJECT SHALL COMPLY WITH CITY OF WICHITA STANDARD SPECIFICATIONS FOR THE CONSTRUCTION OF CITY PROJECTS UNLESS OTHERWISE NOTED IN THE PLANS OR SPECIAL PROVISIONS.
- UNDERGROUND UTILITY SERVICE LINES AND OVERHEAD UTILITY POLE LINES ARE TO BE ADJUSTED AS NECESSARY BY OTHERS PRIOR TO CONSTRUCTION UNLESS THE PLANS SPECIFICALLY CALL FOR THEIR ADJUSTMENT BY THE CONTRACTOR. EXISTING UTILITIES AND THEIR LOCATION, AS SHOWN ON THE PLANS, REPRESENT THE BEST INFORMATION OBTAINABLE FOR DESIGN. LOCATION INFORMATION HAS BEEN OBTAINED FROM THE VARIOUS UTILITY COMPANIES AND IS EITHER FROM COMPANY RECORD DRAWINGS OR COMPANY PROVIDED FIELD LOCATIONS. THE CONTRACTOR WILL BE REQUIRED TO WORK AROUND EXISTING UTILITIES WITHIN THE RIGHT-OF-WAY WHICH DO NOT CONFLICT WITH PROPOSED CONSTRUCTION.
- TREES AND SHRUBS IN PUBLIC RIGHT-OF-WAY WHICH ARE IN DIRECT CONFLICT WITH PROPOSED NEW CONSTRUCTION SHALL BE REMOVED BY THE CONTRACTOR WITH THE ENGINEER'S APPROVAL. TREES AND SHRUBS WHICH ARE NOT IN DIRECT CONFLICT WITH PROPOSED NEW CONSTRUCTION SHALL BE SAVED AND PROTECTED FROM DAMAGE.
- RUBBLE FROM THE REMOVAL OF MISCELLANEOUS STRUCTURES SHALL BE DISPOSED OF ON SITES TO BE PROVIDED BY THE CONTRACTOR AND APPROVED AS NOTED BELOW.

ALL DISPOSAL SITES MUST BE APPROVED BY THE KANSAS DEPARTMENT OF HEALTH AND ENVIRONMENT. MATERIAL EITHER STOCKPILED OR DISPOSED OF IN A FLOOD PLAIN WOULD REQUIRE A KANSAS STATE BOARD OF AGRICULTURE PERMIT. ANY MATERIAL DUMPED IN WATERS OF THE UNITED STATES OR WETLANDS IS SUBJECT TO U.S. CORPS OF ENGINEERS PERMITTING REGULATIONS. ANY MATERIAL BURIED OR STOCKPILED BEYOND APPROVED CONSTRUCTION LIMITS WOULD REQUIRE ADDITIONAL ARCHEOLOGICAL INVESTIGATIONS UNLESS BURIED IN A PREVIOUSLY APPROVED BORROW LOCATION.
- EACH BIDDER SHALL VISIT THE SITE OF THE PROJECT BEFORE SUBMITTING THE PROPOSAL FOR THIS WORK SO THAT HE WILL BE FULLY INFORMED OF THE EXISTING FIELD CONDITIONS AND THE OBSTACLES WHICH MIGHT BE ENCOUNTERED. UPON AWARD OF THE CONTRACT THE CONTRACTOR WILL NOT BE GRANTED ANY ADDITIONAL COMPENSATION WITH REGARDS TO TIME AND MONEY FOR CONDITIONS THAT MAY HAVE BEEN EVALUATED DURING ANY INSPECTION OF THE SITE.
- FIELD LOCATE ALL EXISTING UTILITIES PRIOR TO BEGINNING ANY EXCAVATION WORK. CONTACT THE KANSAS-ONE-CALL SYSTEM AT 811 OR 687-2470 AT LEAST 72 HOURS IN ADVANCE TO REQUEST FIELD LOCATES. FOR UTILITIES THAT ARE NOT MEMBERS OF THE KANSAS-ONE-CALL SYSTEM, CONTACT THOSE COMPANIES DIRECTLY.

THE CONTRACTOR MUST NOTIFY THE FOLLOWING IN CASE OF AN EMERGENCY:

COX COMMUNICATIONS	800-778-9140
KANSAS GAS SERVICE	888-482-4950
WESTAR ENERGY	800-383-1183
BLACK HILLS ENERGY	800-694-8989
AT&T	800-286-8313
CITY OF WICHITA WATER DEPARTMENT	262-6000
CITY OF WICHITA SEWER MAINTENANCE	262-6000
- THE LUMP SUM BID ITEM "SITE CLEARING" SHALL INCLUDE, BUT NOT BE LIMITED TO MOBILIZATION, REMOVAL OF MINOR OBSTRUCTIONS, REMOVAL AND SALVAGE OF CONFLICTING PRIVATE IMPROVEMENTS WITHIN THE PROJECT AREA, MINOR SHAPING AND GRADING OF SLOPES FOR FINISHED APPEARANCE, REMOVAL OF CONSTRUCTION DEBRIS, REMOVAL OF TREES WITHIN CONSTRUCTION LIMITS, AND GENERAL CLEAN-UP.
- THE CONTRACTOR SHALL BE RESPONSIBLE FOR PRESERVING PROPERTY IRONS. THE CONTRACTOR WILL BE REQUIRED TO RE-ESTABLISH ANY PROPERTY IRONS WHICH ARE DAMAGED OR DESTROYED BY HIS CONSTRUCTION OPERATIONS, OR WHICH ARE COVERED BY 12" OR MORE OF FILL MATERIAL BY THIS PROJECT. SUCH IRONS SHALL BE RE-ESTABLISHED BY A LICENSED LAND SURVEYOR IN ACCORDANCE WITH STATE LAWS AND AT NO ADDITIONAL COST TO THE CITY.
- THE CONTRACTOR SHALL APPLY TEMPORARY SEED AND MULCH TO ALL UNPAVED AREAS DISTURBED BY CONSTRUCTION OPERATIONS WITHIN 14 DAYS AFTER SUCH OPERATIONS CEASE IN ACCORDANCE WITH THE STANDARD SPECIFICATIONS. THIS WORK SHALL BE PAID FOR AT THE CONTRACT LUMP SUM PRICE BID FOR "TEMPORARY PROJECT SEEDING".
- IN THE PROPER SEASON, CONTRACTOR SHALL APPLY PERMANENT SEED, FERTILIZER, AND MULCH TO ALL UNPAVED AREAS DISTURBED BY CONSTRUCTION. THE SEED MIX AND APPLICATION RATES SHALL BE IN ACCORDANCE WITH CITY OF WICHITA STANDARD SPECIFICATIONS. THIS WORK SHALL BE PAID FOR AT THE CONTRACT LUMP SUM PRICE BID FOR "SEEDING".
- EROSION CONTROL (BMP'S)
THE CONTRACTOR SHALL INSTALL AND/OR MAINTAIN EROSION CONTROL METHODS AS SPECIFIED ON THE EROSION CONTROL PLAN CONTAINED HEREIN. THE FOLLOWING QUANTITIES ARE ESTIMATED, AND SHOULD BE CONSIDERED THE MINIMUM EFFORT REQUIRED. INSTALLATION OF THESE BMP'S DOES NOT RELIEVE THE CONTRACTOR OF THE RESPONSIBILITY OF ABATING SOIL EROSION.

BACK OF CURB PROTECTION	1,298 L.F.
INLET PROTECTION	12 EACH
SILT FENCE BARRIER	836 L.F.
EROSION CONTROL MAT	2,114 S.Y.
- THE CONTRACTOR SHALL GIVE ALL PROPERTY OWNERS AND/OR TENANTS OF DEVELOPED PROPERTY ADJACENT TO THE CONSTRUCTION OF THIS PROJECT A MINIMUM OF 10 DAYS ADVANCE NOTICE PRIOR TO START OF CONSTRUCTION IN THE VICINITY OF THE AFFECTED PROPERTY.
- THE CONTRACTOR SHALL REMOVE EXISTING ROAD SIGNS THAT INTERFERE WITH CONSTRUCTION. SIGNS DAMAGED THRU NEGLIGENCE OF THE CONTRACTOR SHALL BE REPLACED BY THE CONTRACTOR AT NO COST TO THE CITY. THE CONTRACTOR SHALL STOCKPILE THE SIGNS ALONG THE R/W (AT A CENTRAL LOCATION) FOR REMOVAL BY CITY FORCES.
- CONTRACTOR SHALL SUPPLY, INSTALL, AND MAINTAIN CONSTRUCTION TRAFFIC CONTROL AS NECESSARY TO PROTECT THE TRAVELING PUBLIC. ALL TRAFFIC CONTROL DEVICES, AND THE INSTALLATION AND USE THEREOF, SHALL CONFORM TO THE REQUIREMENTS OF THE MANUAL ON UNIFORM TRAFFIC CONTROL DEVICES (MUTCD), LATEST EDITION. ALL DEVICES SHALL BE REFLECTORIZED. CONSTRUCTION TRAFFIC CONTROL SHALL BE SUBSIDIARY TO OTHER BID ITEMS OF WORK.
- WATER FOR EARTHWORK SHALL BE CONSIDERED SUBSIDIARY TO "EXCAVATION".
- PRIOR TO CONSTRUCTION, THE CONTRACTOR SHALL RE-ESTABLISH CONTROL POINTS AND BENCH MARKS AND VERIFY THEIR ACCURACY.

IRRIGATION AND LANDSCAPING

THE CONTRACTOR SHALL EXERCISE CAUTION WHILE WORKING AROUND IRRIGATION AND LANDSCAPING ITEMS. ANY REMOVAL, RELOCATION AND/OR REPLACEMENT OF LANDSCAPING ITEMS, SPRINKLER HEADS OR OTHER PRIVATE IMPROVEMENTS THAT ARE IN DIRECT CONFLICT WITH CONSTRUCTION SHALL BE COORDINATED WITH THE ENGINEER. THE CONTRACTOR SHALL BE RESPONSIBLE FOR NOTIFYING THE PROPERTY OWNER OF ANY SUCH WORK. THE MATERIAL COST, LABOR COST AND ALL INCIDENTALS NECESSARY TO THE COMPLETE THIS WORK SHALL BE INCLUDED IN THE LUMP SUM PRICE BID FOR "IRRIGATION SYSTEM REPAIR".

Saved 12-17-2013 12:12:59 PM by BJS
 Plot Scale 1:150 12-17-2013 12:13:45 PM by BILL SEKISON
 Q:\2012\12568\0001\2012\2568-001-022-KEY MAP-GEN NOTES

Revision		By	Date
MAIZE ROAD PAVING AND DRAINAGE IMPROVEMENTS LOT 1, BLOCK 1 NEWMARKET V ADDITION KEY MAP AND GENERAL NOTES GARY JANZEN, P.E. - CITY ENGINEER CITY OF WICHITA PROJECT NO. 472-84607			
		PROFESSIONAL ENGINEERING CONSULTANTS, P.A. 303 SOUTH TOPEKA WICHITA, KS 67202 316-262-2691 www.pec1.com	
Designed by	CSB	Job No.	35-12568-000/001
Drawn by	BJS	Date	September 2013
			Sht. 2 of 65