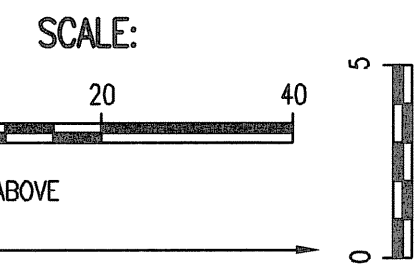


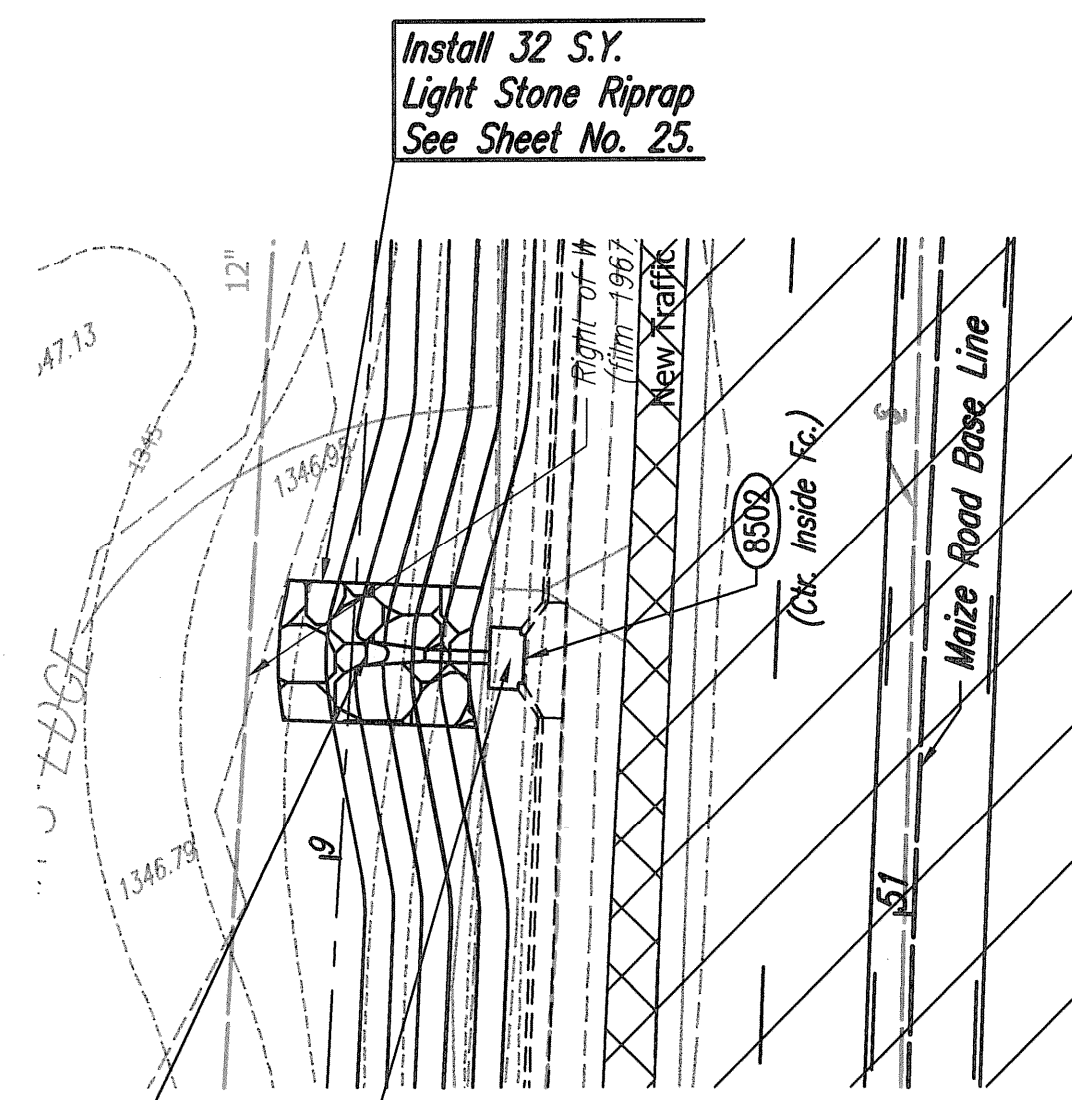
PLAN	CHECKED	DATE
	CHECKED	

PROFILE	CHECKED	DATE
	CHECKED	

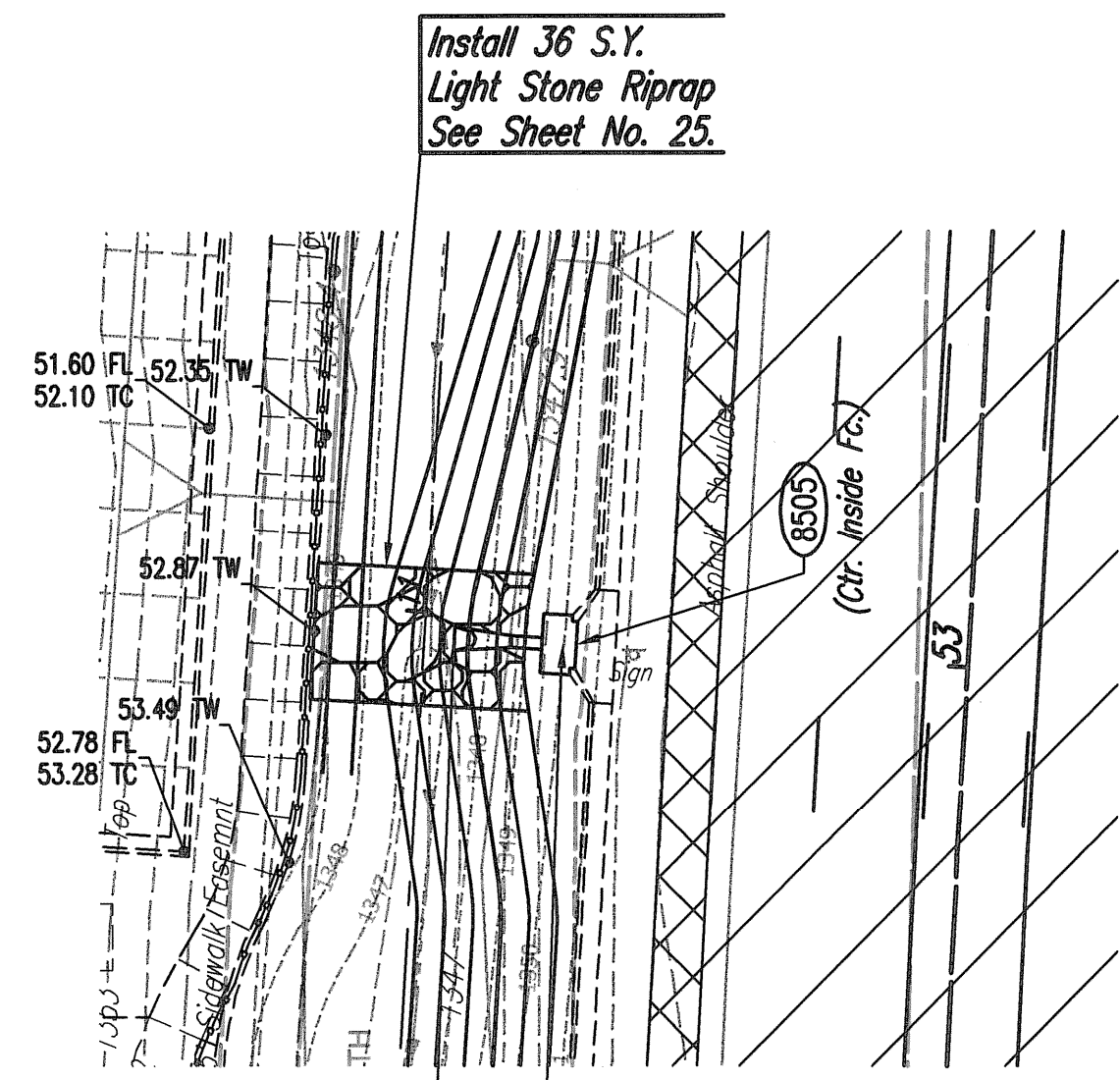
Saved 12-04-2013 4:30:33 PM by BJS
 Plot Scale 1:20 12-17-2013 12:1:00 PM by BJS
 G:\2012\12568\000_001\2568-01-200_Plan and Profile-SWS Line NOS 1-4



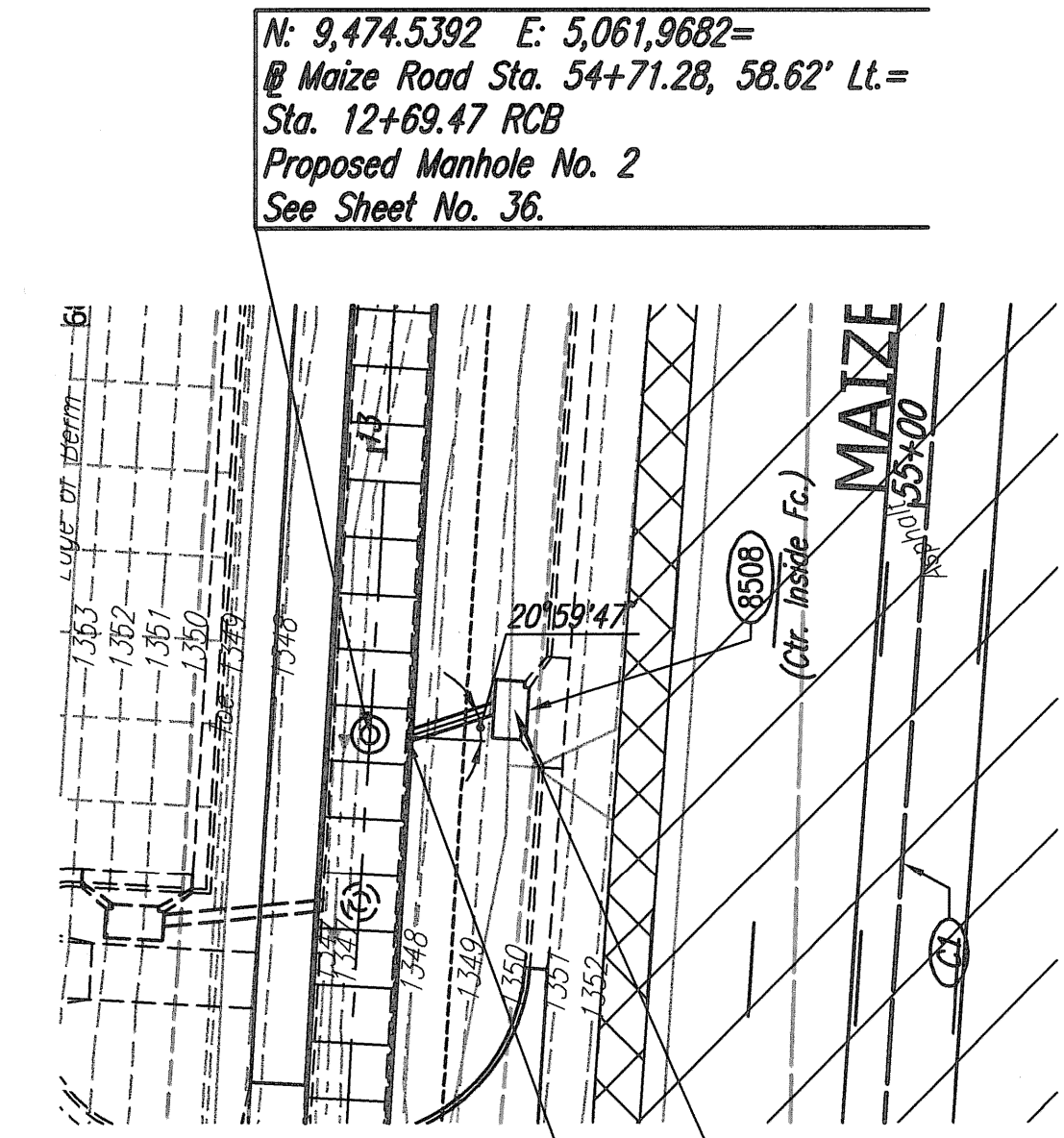
PLAN: LAT. & LONG.
 PROFILE: HORIZ. SAME AS ABOVE
 VERT. _____



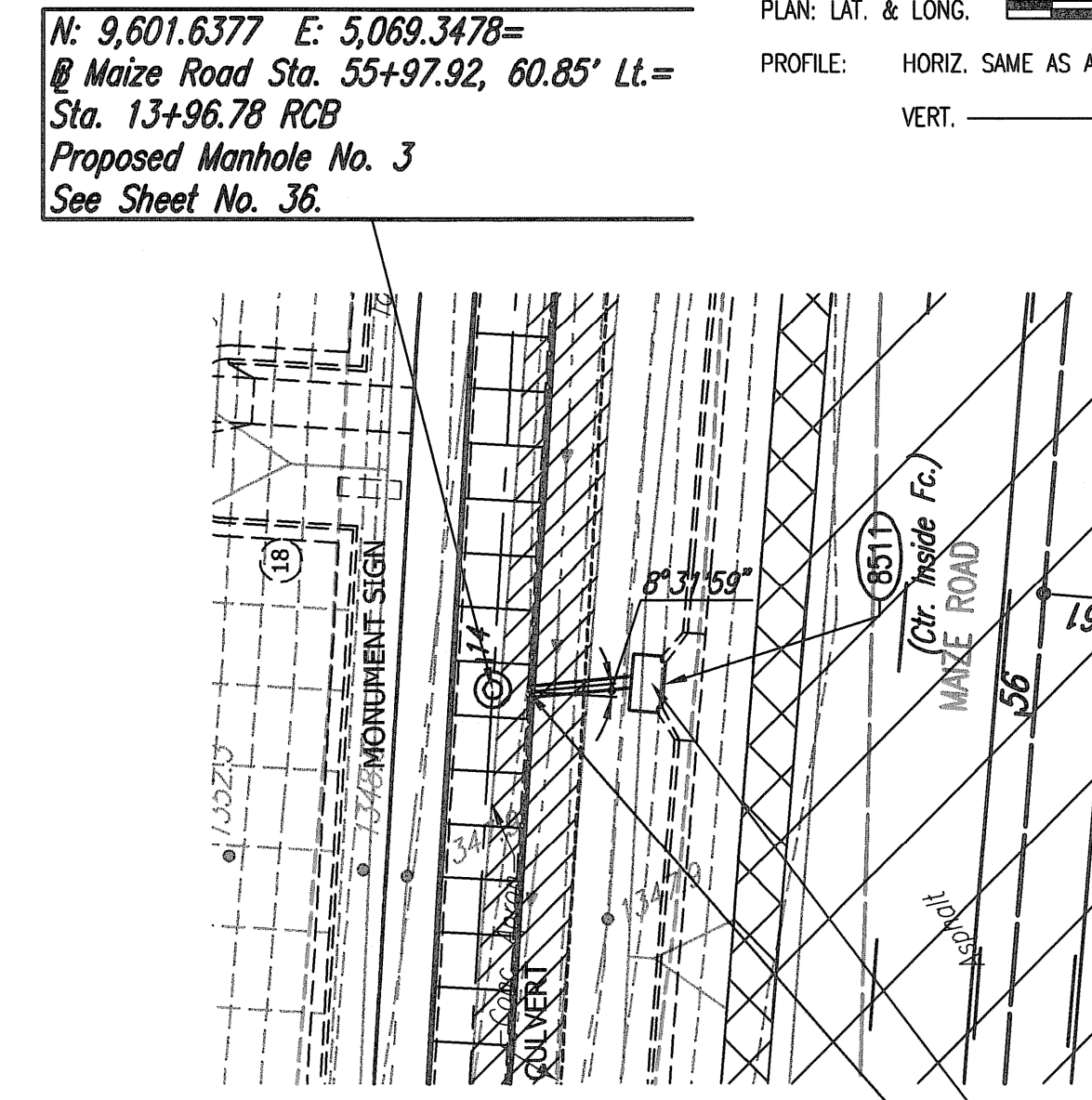
Install 32 S.Y.
 Light Stone Riprap
 See Sheet No. 25.



Install 36 S.Y.
 Light Stone Riprap
 See Sheet No. 25.



N: 9,474.5392 E: 5,061,9682=
 @ Maize Road Sta. 54+71.28, 58.62' Lt.=
 Sta. 12+69.47 RCB
 Proposed Manhole No. 2
 See Sheet No. 36.



N: 9,601.6377 E: 5,069,3478=
 @ Maize Road Sta. 55+97.92, 60.85' Lt.=
 Sta. 13+96.78 RCB
 Proposed Manhole No. 3
 See Sheet No. 36.

COORDINATE LIST		
POINT	NORTH	EAST
8500	9,127.0019	5,043.2938
8501	9,126.4054	5,058.2819
8502	9,126.3458	5,059.7807
8503	9,302.4982	5,055.1269
8504	9,301.8656	5,066.6070
8505	9,301.7831	5,068.1047
8506	9,474.3073	5,065.9615
8507	9,477.1782	5,077.6107
8508	9,477.0728	5,079.1069
8509	9,601.4058	5,073.3410
8510	9,602.2885	5,087.1089
8511	9,602.1668	5,088.6039

8500 = COORDINATE POINT NO.
 SEE SHEET NO. 3 FOR PLAN COORDINATES

Sta. 9+85.0 SWS Line No. 1=
 @ Maize Road Sta. 51+25.00, 58.17' Lt.
 Begin 15" RCP Construction
 Install 15.0 L.F. 15" RCP (E)
 (Including End Section)

Sta. 10+00.0 SWS Line No. 1=
 @ Maize Road Sta. 51+25.00, 43.20' Lt.
 Const. Std. Type 1A Curb Inlet with
 Stormwater Quality Device (SNOUT)(Install
 Per Manufacture's Recommendations.)
 L=5'-0", W=3'-0"
 Top Elev.=1352.32
 See Sheet Nos. 22 & 26.

Sta. 19+88.5 SWS Line No. 2=
 @ Maize Road Sta. 53+00.00, 54.66' Lt.
 Begin 15" RCP Construction
 Install 11.5 L.F. 15" RCP (E)
 (Including End Section)

Sta. 20+00.0 SWS Line No. 2=
 @ Maize Road Sta. 53+00.00, 43.20' Lt.
 Const. Std. Type 1A Curb Inlet with
 Stormwater Quality Device (SNOUT)(Install
 Per Manufacture's Recommendations.)
 L=5'-0", W=3'-0"
 Top Elev.=1352.24
 See Sheet No. 22 & 26.

Sta. 29+88.0 SWS Line No. 3=
 @ Maize Road Sta. 54+71.33, 54.62' Lt.=
 Sta. 12+69.47 RCB
 Begin 15" RCP Construction
 Install 12.0 L.F. 15" RCP (E)
 Connect to 8' x 3' RCB

Sta. 30+00.0 SWS Line No. 3=
 @ Maize Road Sta. 54+75.00, 43.20' Lt.
 Const. Std. Type 1A Curb Inlet with
 Stormwater Quality Device (SNOUT)(Install
 Per Manufacture's Recommendations.)
 L=5'-0", W=3'-0"
 Top Elev.=1352.35
 See Sheet Nos. 22 & 26.

Sta. 39+86.2 SWS Line No. 4=
 @ Maize Road Sta. 55+98.01, 56.85' Lt.=
 Sta. 13+96.78 RCB
 Begin 15" RCP Construction
 Install 13.8 L.F. 15" RCP (E)
 Connect to 8' x 3' RCB

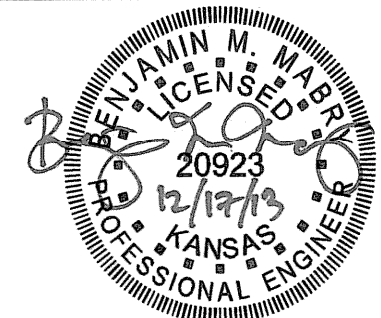
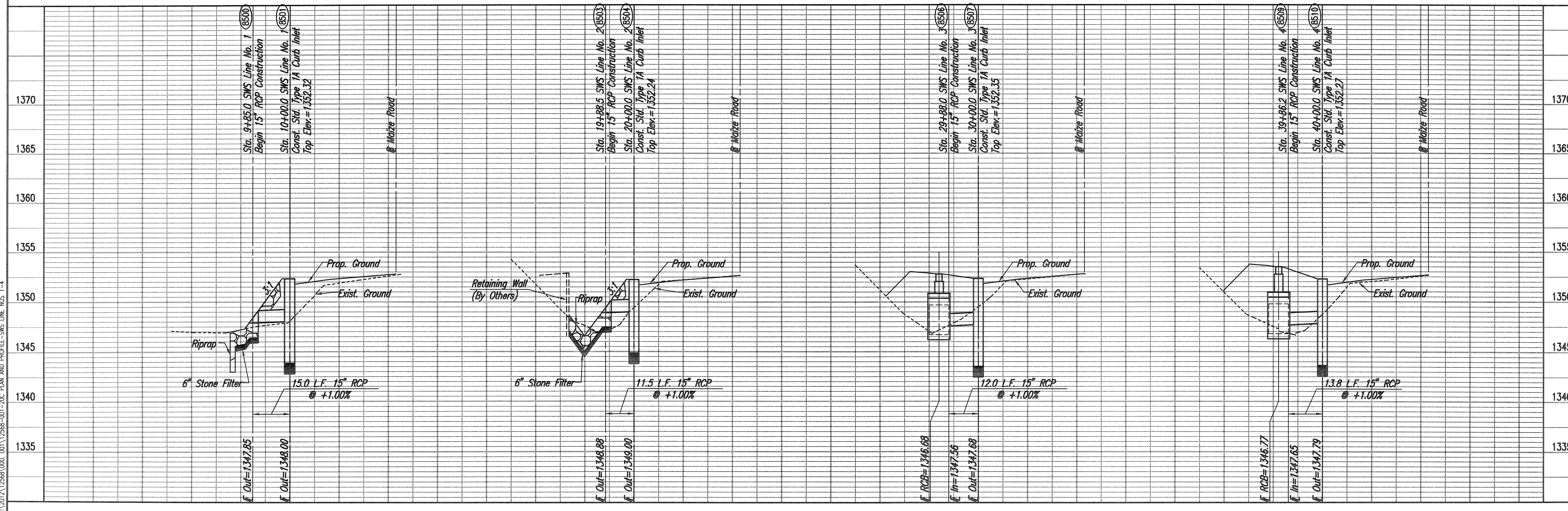
Sta. 40+00.0 SWS Line No. 4=
 @ Maize Road Sta. 56+00.00, 43.20' Lt.
 Const. Std. Type 1A Curb Inlet with
 Stormwater Quality Device (SNOUT)(Install
 Per Manufacture's Recommendations.)
 L=5'-0", W=3'-0"
 Top Elev.=1352.27
 See Sheet No. 22 & 26.

SWS LINE NO. 1

SWS LINE NO. 2

SWS LINE NO. 3

SWS LINE NO. 4



MAIZE ROAD PAVING AND DRAINAGE IMPROVEMENTS
 LOT 1, BLOCK 1 NEWMARKET V ADDITION
SWS LINE NOS. 1 THRU 4
 CARY JANZEN, P.E.-CITY ENGINEER
 CITY OF WICHITA PROJECT NO. 472-94607

IPEC
 PROFESSIONAL ENGINEERING CONSULTANTS, P.A.
 303 SOUTH TOPEKA WICHITA, KS 67202
 316-262-2681 www.ipec.com

Job No. 35-12568-000/001
 Date September 2013
 Designed By CSB
 Drawn By BUS