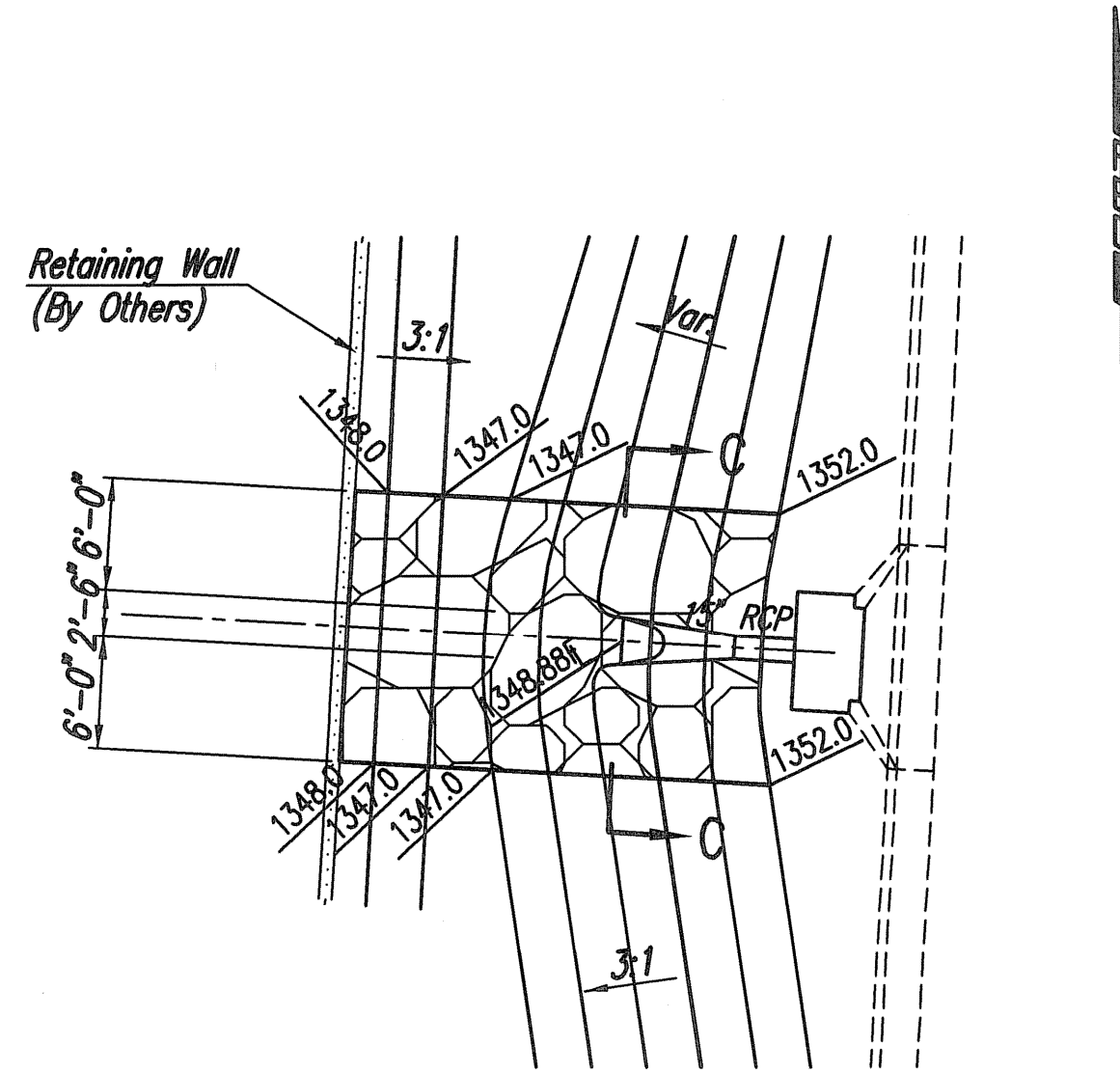
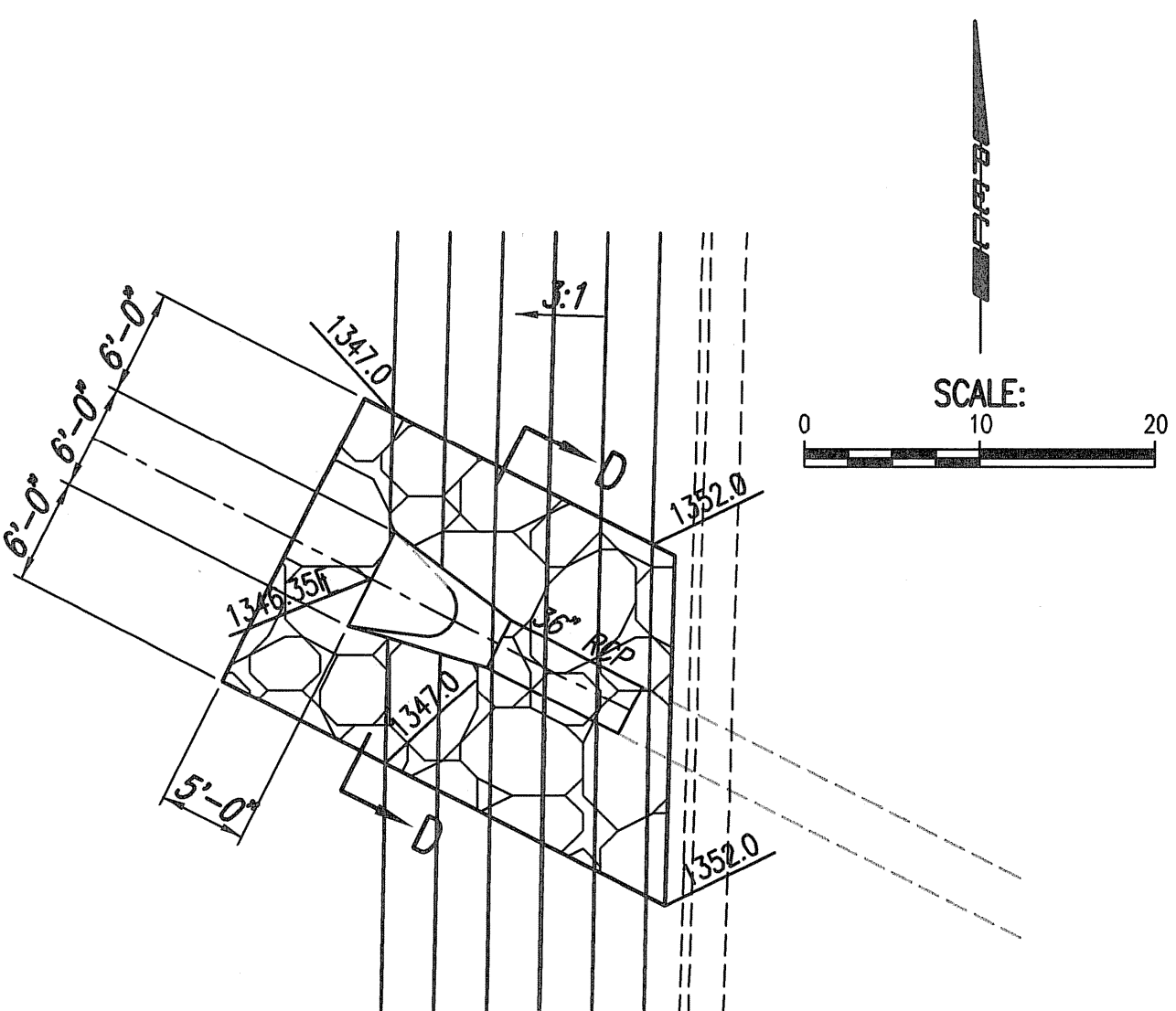


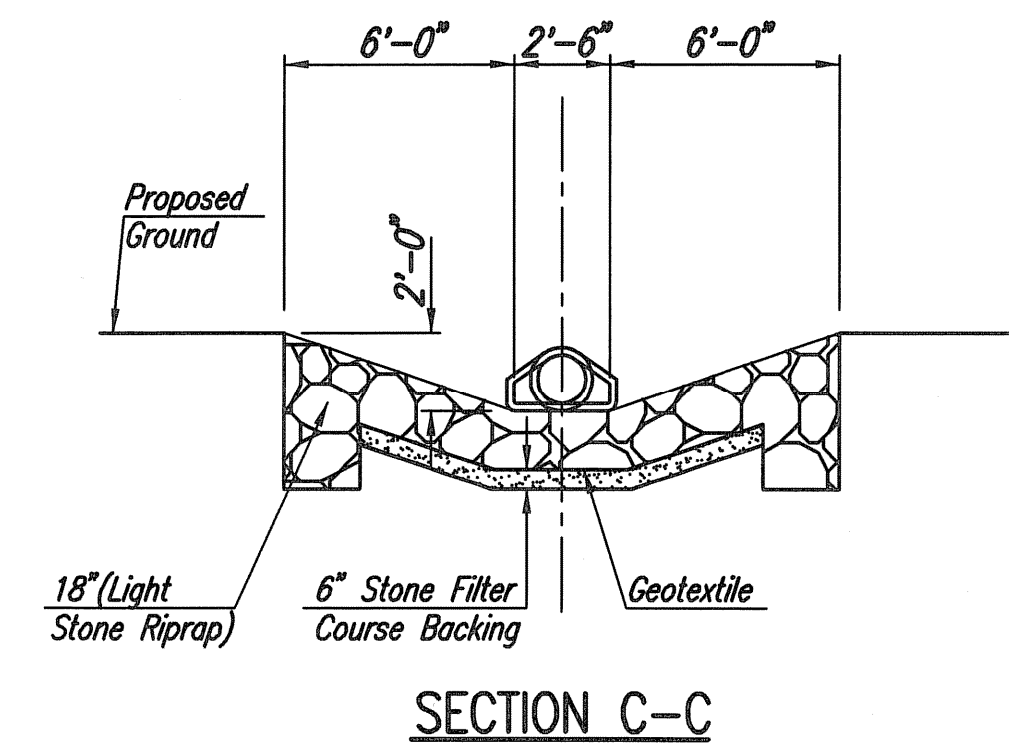
RIPRAP PLAN
(SWS Line No. 1)



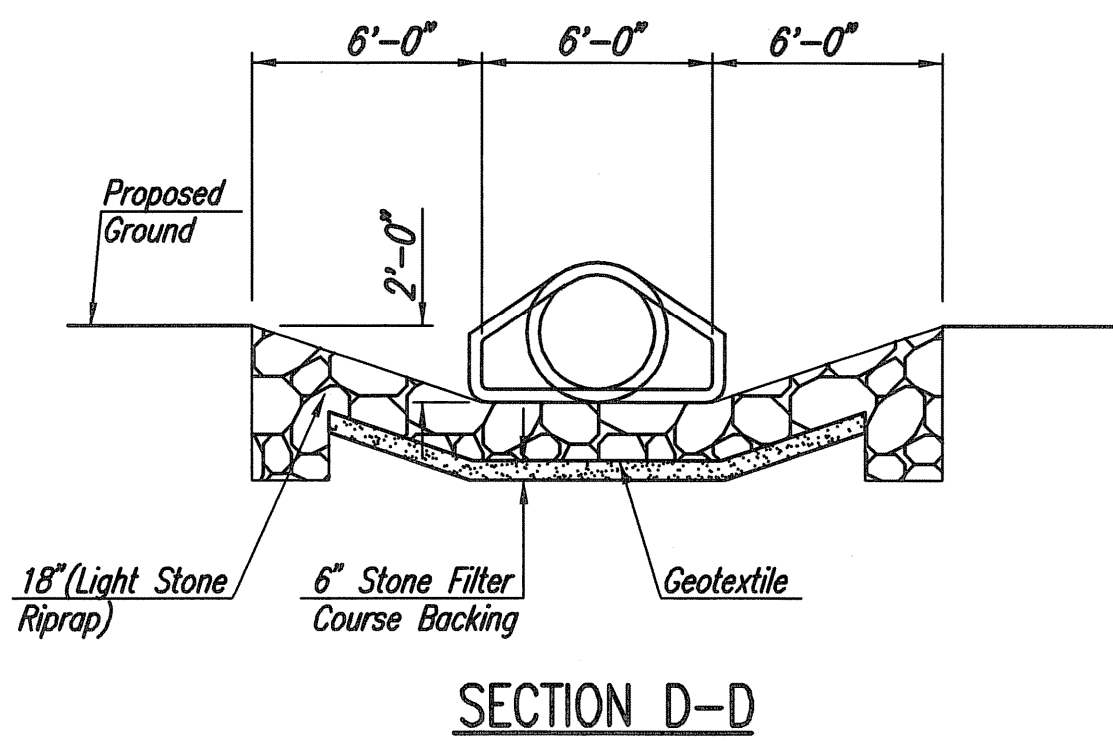
RIPRAP PLAN
(SWS Line No. 2)



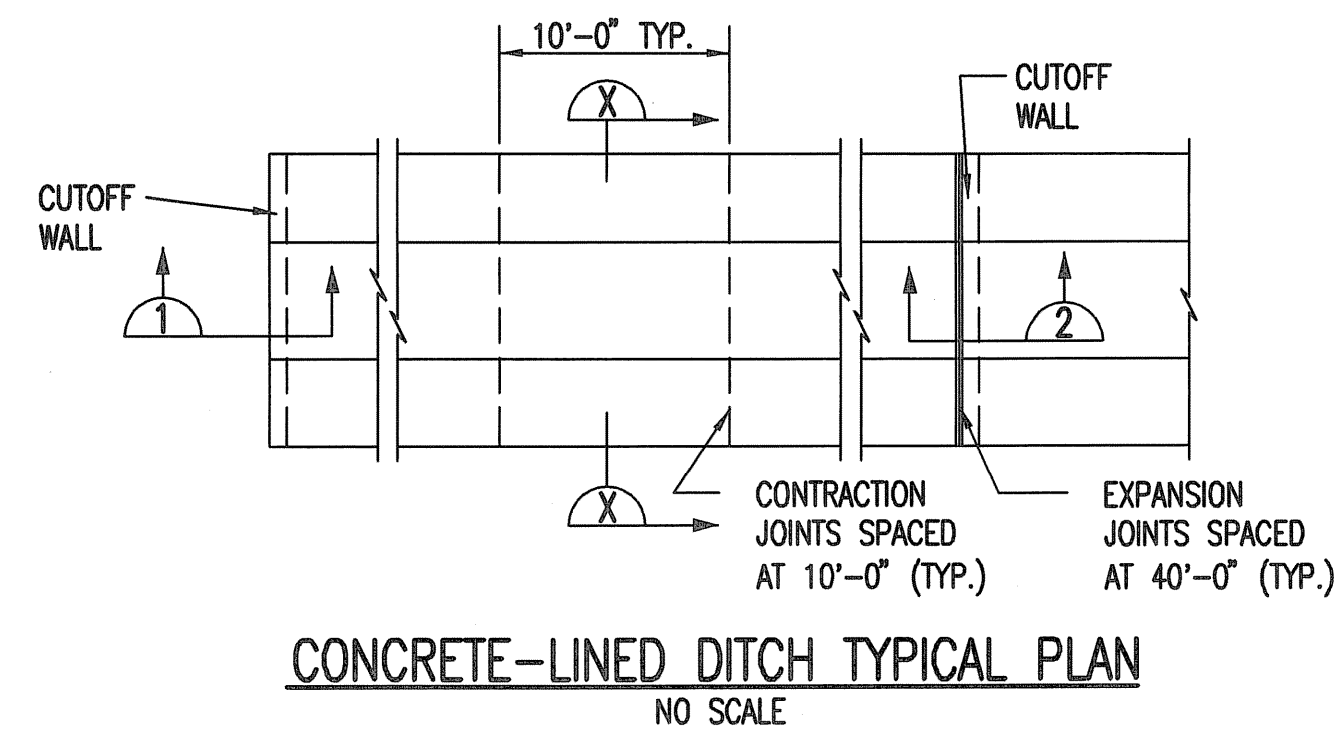
RIPRAP PLAN
(36" SWS Extension)



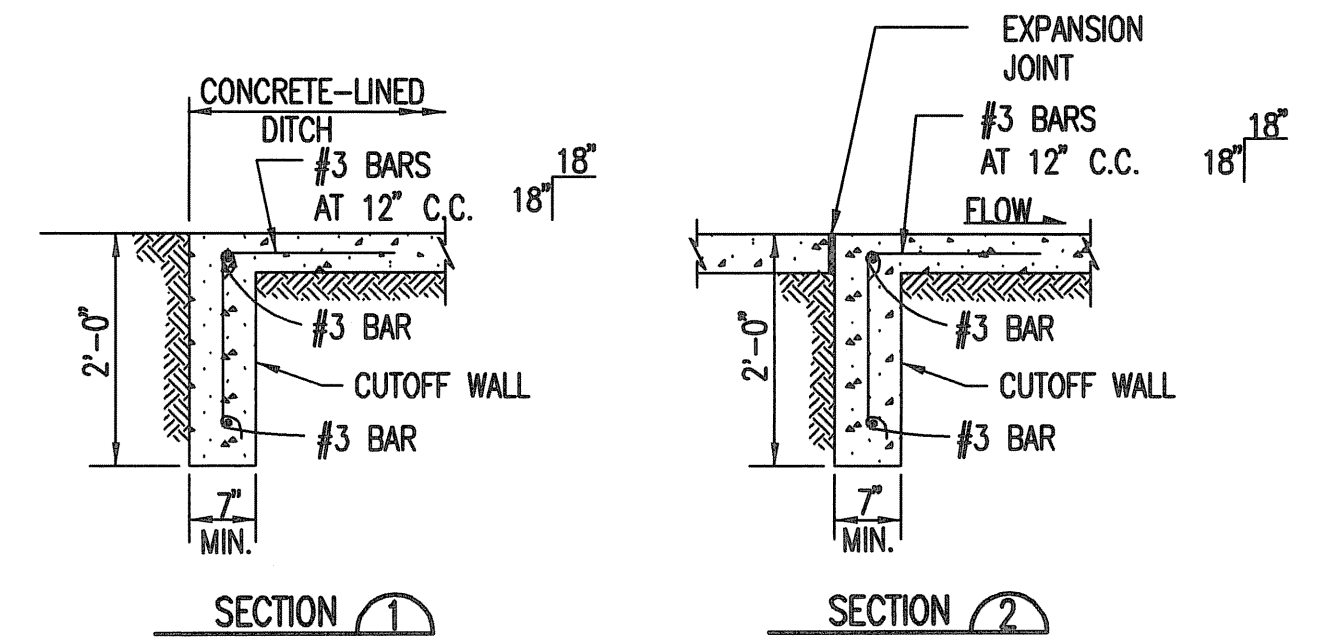
SECTION C-C



SECTION D-D

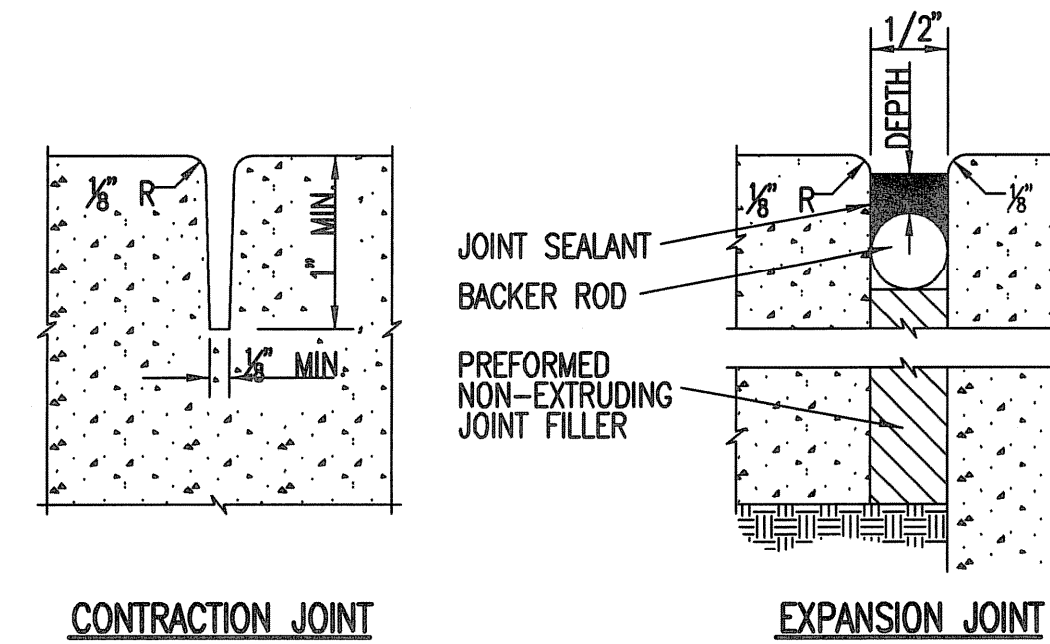


CONCRETE-LINED DITCH TYPICAL PLAN
NO SCALE



SECTION 1

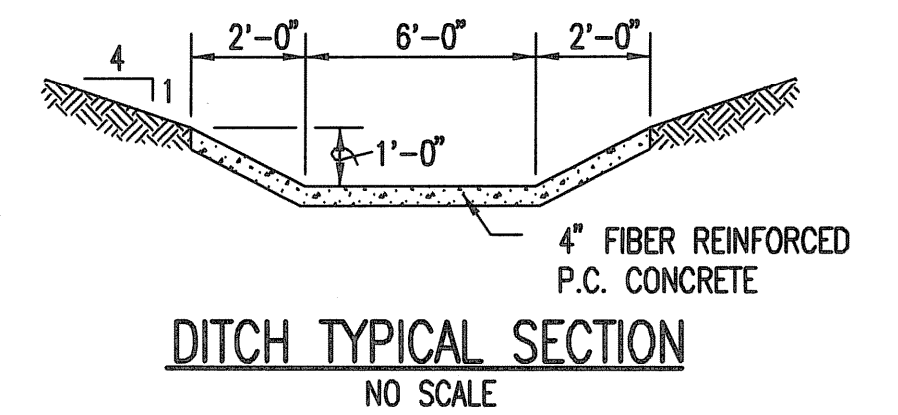
SECTION 2



CONTRACTION JOINT

EXPANSION JOINT

JOINT DETAILS
NO SCALE




DITCH TYPICAL SECTION
NO SCALE

NOTES

1. CONCRETE SHALL CONFORM TO SECTION 02770A "CONCRETE SIDEWALKS AND CURBS AND GUTTERS" EXCEPT AS OTHERWISE INDICATED HEREIN. CONCRETE SHALL BE REINFORCED WITH SYNTHETIC FIBERS AND SHALL HAVE A SLUMP OF LESS THAN OR EQUAL TO 2 INCHES.
2. SYNTHETIC FIBERS SHALL BE POLYPROPYLENE WITH A DENIER NOT LESS THAN 100, MULTI-GRADED AND HAVE A MAXIMUM NOMINAL FIBER LENGTH OF 2 INCHES. FIBER REINFORCEMENT SHALL BE ADDED TO THE CONCRETE MIX IN ACCORDANCE WITH THE APPLICABLE SECTIONS OF ASTM C 1116 AND THE RECOMMENDATIONS OF THE MANUFACTURER. THE AMOUNT OF FIBERS TO BE ADDED TO THE CONCRETE MIX SHALL NOT BE LESS THAN 1.5 POUNDS PER CUBIC YARD.
3. JOINT SEALANT SHALL CONFORM TO ASTM D 5893, TYPE NS. DEPTH OF SEALANT SHALL BE AS RECOMMENDED BY THE MANUFACTURER.

Save 12-04-2013 4:39:23 PM by BJS
 Plot Scale: 1:10 12-17-2013 12:25:03 PM by BILL SEKSON
 C:\2012\12568\000_001\12568-001-25C-DITCH LINING-REPAIR DTL3

No.	Revision	By	Date
MAIZE ROAD PAVING AND DRAINAGE IMPROVEMENTS LOT 1, BLOCK 1 NEWMARKET V ADDITION DITCH LINING AND RIPRAP DETAILS GARY JANZEN, P.E. - CITY ENGINEER CITY OF WICHITA PROJECT NO. 472-84607  PROFESSIONAL ENGINEERING CONSULTANTS, P.A. 303 SOUTH TOPEKA WICHITA, KS 67202 316-262-2691 www.pec1.com			
Designed by	CSB	Job No.	35-12568-000/001
Drawn by	BJS	Date	September 2013
			Sht. 25 of 65