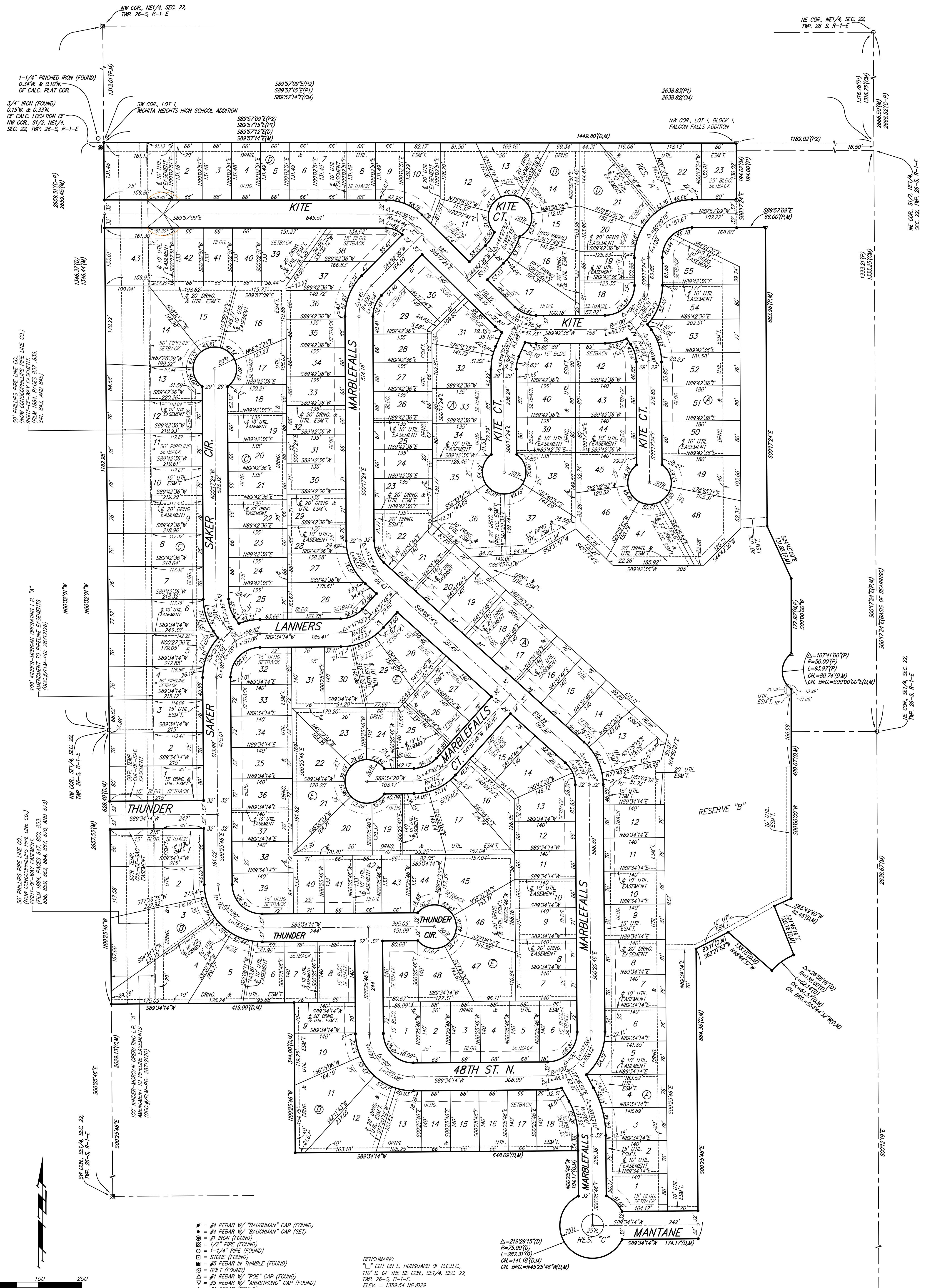


FALCON FALLS 2ND ADDITION WICHITA, SEDGWICK COUNTY, KANSAS



1-1/4" PINCHED IRON (FOUND)
0.34"W. & 0.10"N.
OF CALC. PLAT COR.

3/4" IRON (FOUND)
0.15"W. & 0.33"N.
OF CALC. LOCATION OF
NW COR., S1/2, NE1/4,
SEC. 22, TWP. 26-S, R-1-E

50' PHILLIPS PIPE LINE CO.
(NOW CONCO PHILLIPS PIPE LINE CO.)
RIGHT-OF-WAY EASEMENT.
FILM 1884, PAGES 837, 839,
841, 843, AND 845

100' UNDER-MORGAN OPERATING L.P. "A"
(OCC./FILM-PC: 2871218)

50' PHILLIPS PIPE LINE CO.
(NOW CONCO PHILLIPS PIPE LINE CO.)
RIGHT-OF-WAY EASEMENT. RES.
654, 659, 662, 664, 667, 670, AND 673

LOTS WITHIN FALCON FALLS 2ND ADDITION
L HAVE A 5 FOOT INTERIOR SIDYARD SETBACK.

- #4 REBAR W/ "BAUGHMAN" CAP (FOUND)
- #4 REBAR W/ "BAUGHMAN" CAP (SET)
- #1 IRON (FOUND)
- ⊗ 1/2" PIPE (FOUND)
- 1-1/4" PIPE (FOUND)
- STONE (FOUND)
- ⊕ #5 REBAR IN THIMBLE (FOUND)
- ⊙ BOLT (FOUND)
- △ #4 REBAR W/ "POE" CAP (FOUND)
- ▽ #5 REBAR W/ "ARMSTRONG" CAP (FOUND)
- ◇ #4 REBAR (FOUND)

BENCHMARK:
"CT" CUT ON E HUBGUARD OF R.C.B.C.,
110' S OF THE SE COR., S1/4, SEC. 22,
TWP. 26-S, R-1-E.
ELEV. = 1359.54 NGVD29

MINIMUM BUILDING PAD ELEVATIONS FOR LOWEST OPENING TO THE STRUCTURES		
LOT	BLOCK	ELEVATION NGVD29
1-9	A	1353.0
10-12	A	1354.0
13-19, 36, 37	A	1355.0
46-50	A	1355.0
51-55	A	1357.0
21, 22	D	1359.5

- (M) = MEASURED
- (P) = PLATTED
- (D) = DESCRIBED
- (C) = CALCULATED
- (CM) = CALCULATED PER
MEASURED INFO.
- (C-P) = CALCULATED PER
PLATTED INFO.
- (P1) = CALCULATED PER HEIGHTS HIGH
SCHOOL PLATTED INFO.
- (P2) = PLATTED INFO. PER FALCON
FALLS ADDITION