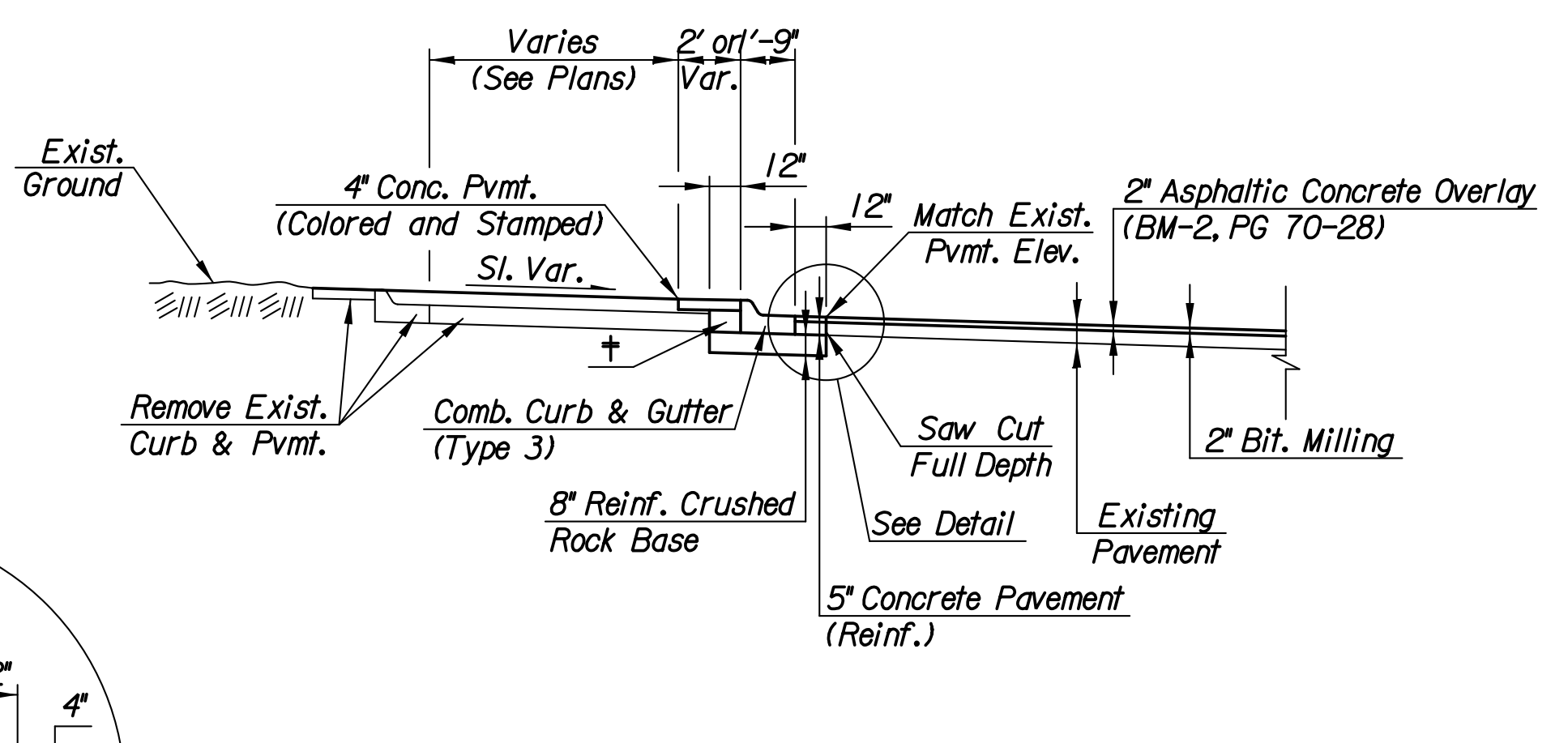
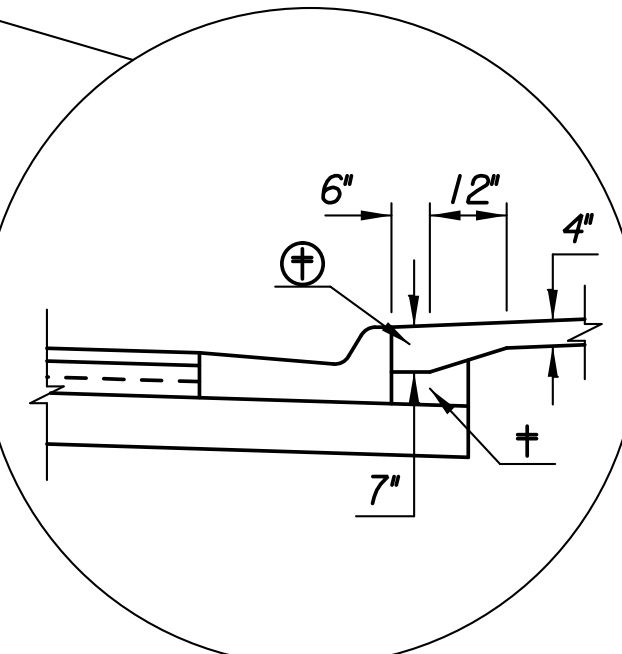


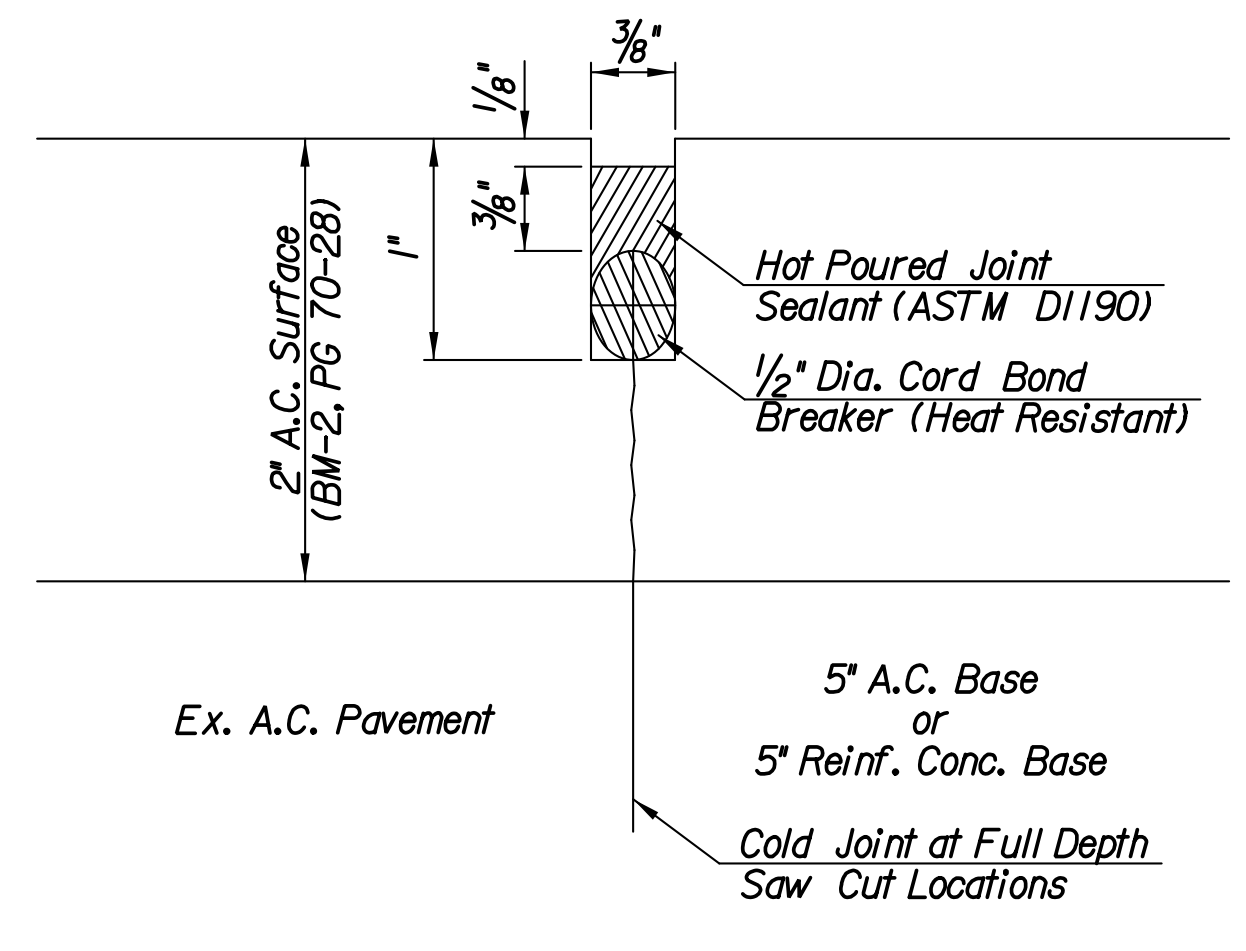
PARTIAL SECTION - GREENWICH RD. PVMT. WIDENING
 Sta. 103+17.36 to Sta. 117+67.28 Rt.
 Sta. 120+25.26 to Sta. 123+05.91 Lt. (Mirrored)
 Sta. 120+28.69 to Sta. 121+84.00 Rt.
 Sta. 131+14.92 to Sta. 140+64.52 Rt.
 Sta. 131+14.92 to Sta. 133+47.31 Lt. (Mirrored)



PARTIAL SECTION - GREENWICH RD. MEDIAN MOD.
 Sta. 103+17.36 to Sta. 108+05.24

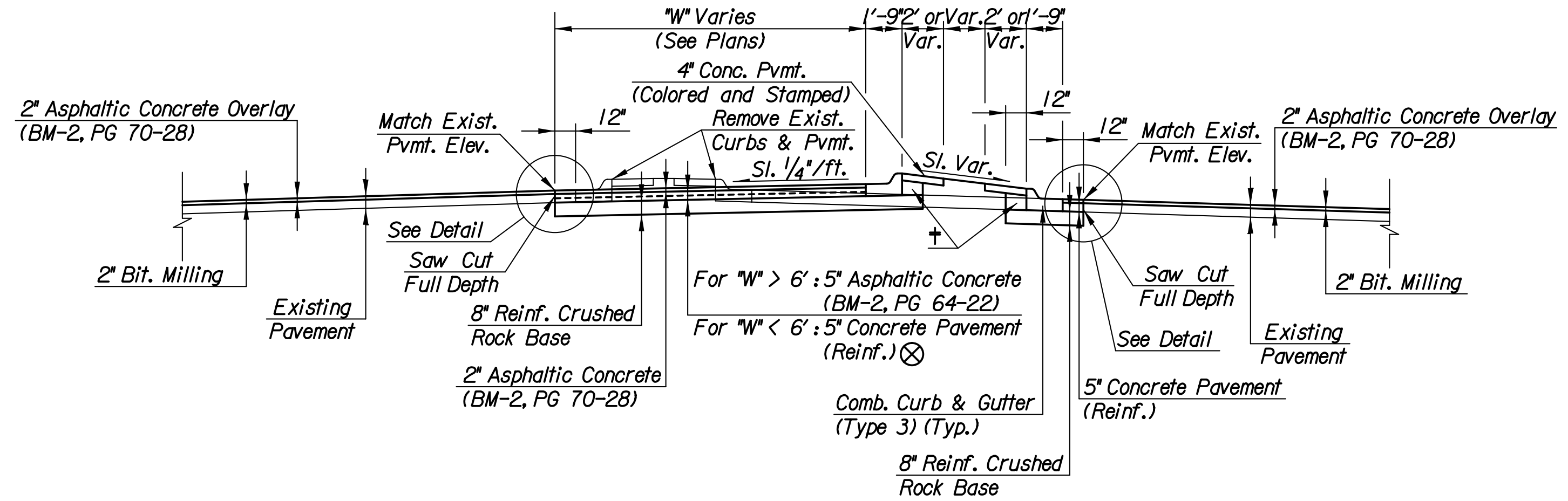


TYP. THICKENED SIDEWALK EDGE DETAIL
 (Where sidewalk is adjacent to curb)

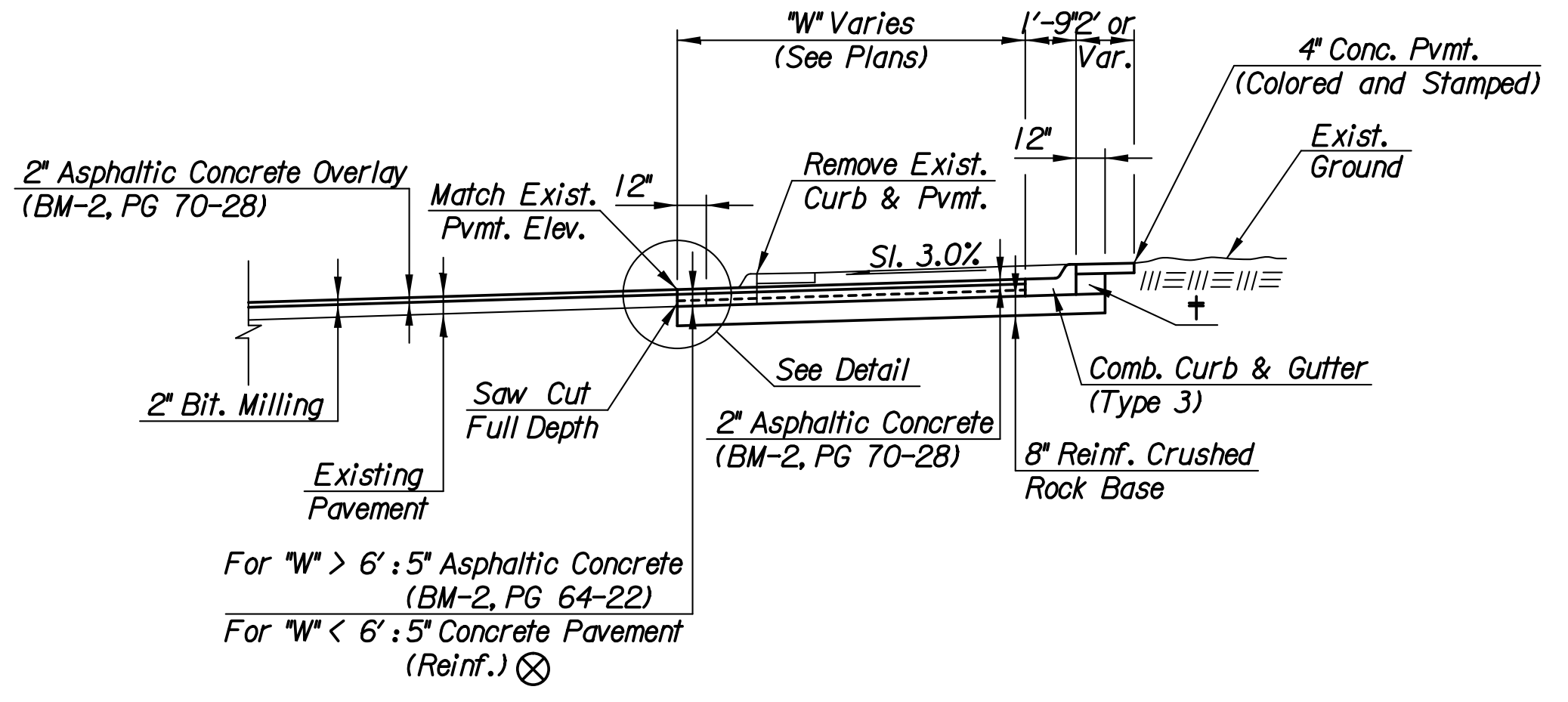


SAW & SEAL DETAIL
 (For A.C. Pavement)

NOTE: After final surfacing, the Contractor shall saw & seal the A.C. Surface Course along all locations where the existing pavement is being widened. All costs associated with this work shall be considered **SUBSIDIARY** to the Measured Quantity Bid Item "Saw & Seal Joints".

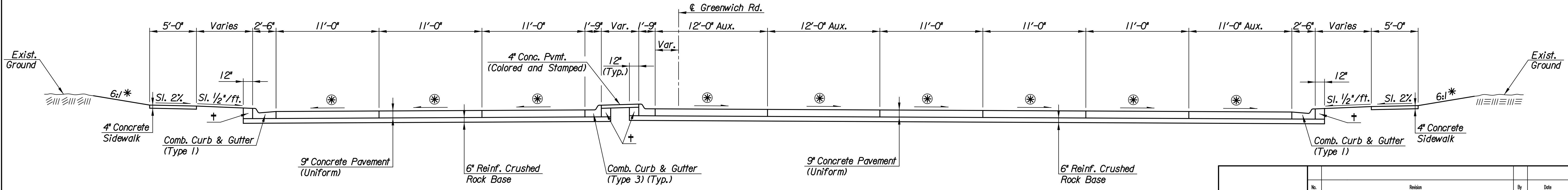


PARTIAL SECTION - GREENWICH RD. MEDIAN MOD.
 Sta. 109+03.25 to Sta. 114+73.48
 Sta. 114+73.48 to Sta. 117+67.28 (Mirrored)
 Sta. 120+26.14 to Sta. 121+87.52
 Sta. 131+14.92 to Sta. 131+71.22



PARTIAL SECTION - GREENWICH RD. MEDIAN MOD.
 Sta. 121+87.52 to Sta. 122+89.31
 Sta. 126+19.74 to Sta. 128+72.92 (Mirrored)
 Sta. 131+71.22 to Sta. 133+30.50

- * Dimensions and Slopes for standard ditches and fills. See plan and cross-sections for variations.
- ⊗ See Intersection Details for spot elevations.
- ⊕ The additional thickness of concrete sidewalk will not be paid for directly but is considered **SUBSIDIARY** to the Measured Quantity Bid Item "Concrete Sidewalk 4".
- † Backfill. Quantities for this work are included in the Earthwork Summary Table.
- ⊗ Where Reinforced Concrete is used as the pavement base, transverse Joints shall be located in the base in line with the curb Joints. After final surfacing, the Contractor shall saw & seal the A.C. surface course along all transverse Joint locations in the base, per the "Saw & Seal Detail" shown. All costs associated with this work shall be **SUBSIDIARY** to the Measured Quantity Bid Item "Saw & Seal Joints".



TYPICAL SECTION - GREENWICH RD. RECONSTRUCTION
 Sta. 117+67.28 to Sta. 120+27.46
 Sta. 128+72.92 to Sta. 131+14.92

Plotted By: cp
 Date: 12/30/2013 11:33:50 AM
 FILE: I:\2009\0952\Typicals\09521-TypSec Greenwich.dgn

No.	Revision	By	Date
K-96 AND GREENWICH ROAD			
TYPICAL SECTIONS GREENWICH RD.			
GARY JANZEN, P.E.-CITY ENGINEER CITY OF WICHITA PROJECT NO. 472-85066			
PEC PROFESSIONAL ENGINEERING CONSULTANTS, P.A. 303 SOUTH TOPEKA WICHITA, KS 67202 316-262-2691 www.pec1.com			
Designed by	JPS	Job No.	09521
Drawn by	SVB	Date	Jan., 2014
			Sht. 7 of 388