

P.C. @ Sta. 428+59.66  
1. Found #5 Bar  
2. No References

P.I. @ Sta. 440+23.07 (Bk.)=  
P.I. @ Sta. 439+06.49 (Ahd.)  
1. Not Set

P.T. @ Sta. 450+69.90  
1. Found #5 Bar with Foggy Cap  
2. Sta. Stamp 450+00 on outside edge driving lane 70'± W  
3. Median inlet 1.85'± E  
4. Monument in center of median

P.O.T. @ Sta. 460+00  
1. Set #5 Bar with PEC Cap  
2. Sta. Stamp 460+00 N and S  
3. W end median guard rail 45' E  
4. Monument in center of median

P.C. @ Sta. 469+20.10  
1. Found #5 Bar  
2. Sta. Stamp 470+00  
3. Median inlet 80'± E  
4. Monument in center of Median 110'± E

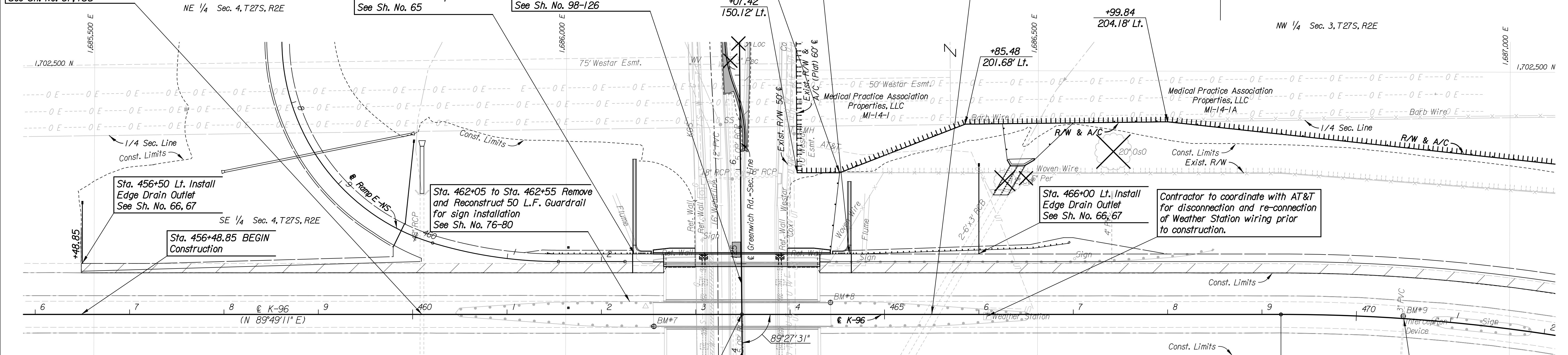
Sta. 460+09.86 Extend  
48" x 267'-9" RCP with  
48" x 50' CRP (RCP) Lt. and  
48" x 50' CRP (RCP) Rt.  
with End Sections  
See Sh. No. 87, 135

Sta. 462+35.13 Construct  
Flume Inlet, 64' Lt.  
Install 91.2 L.F. Slope Drain  
See Sh. No. 65

Sta. 463+48.72 Widen  
Br. No. 96-87-32.79 (411) W.B.  
41'-81'-41' Prestressed  
Concrete Beam Spans  
40'-0" Roadway  
Widen to 50'-0" Roadway  
See Sh. No. 98-126

Sta. 464+62.77 Construct  
Flume Inlet, 64' Lt.  
Install 67.5 L.F. Slope Drain  
See Sh. No. 65

Sta. 465+50 Extend  
2-6'x3'x493'-6" RCB (559)  
36'-0" Lt. w/Apron  
(Skew 30° Rt.)  
See Sh. No. 90-91, 95-97



STATION	SIDE	ITEM
459+95	Rt.	4" PVC Edge Drain Outlet
460+10	Lt.	48" RC Headwall
460+10	Rt.	48" RCP End Section
460+74	Rt.	184 LF Guardrail (E)
462+05	Lt.	50 LF Guardrail (E)
462+19	Rt.	Flume and Slope Drain
462+33	Lt.	Flume and Slope Drain
464+41	Lt.	408 LF Guardrail (E)
464+43	Lt.	1395 LF Woven Wire Fence (E)
464+44	Rt.	1603 LF Woven Wire Fence (E)
464+80	Rt.	Flume and Slope Drain
464+96	Rt.	24" RCP and End Section
465+31	Rt.	Flume and Slope Drain
465+50	Lt.	RCB Headwall & Soil Saver
467+41	Lt.	4" PVC Edge Drain Outlet
470+50	Rt.	15" CMP End Section

\* For Information Only

- UTILITIES**
- AT&T  
Wichita Central Unit  
154 N. Broadway, Rm. 210  
Wichita, ks. 67202  
Jason Edwards (316) 268-2008
  - Cox Communications  
901 George Washington Blvd.  
Wichita, ks. 67211  
Marc Henderson (316) 260-7745
  - Kansas Gas Service  
1021 E. 26th St. N.  
Wichita, ks. 67219  
Jim Coe (316) 832-3126
  - NuStar Pipeline Operating Partnership L.P.  
7340 W. 21st St. N., Suite 200  
Wichita, ks. 67205  
Dale Smith (316) 773-9000
  - Westar Energy  
1900 E. Central (3rd Floor)  
Wichita, ks. 67201  
Jacquelin Rolfe (316) 261-6552
  - Wichita Water Utilities  
455 N. Main (8th Floor - City Hall)  
Wichita, ks. 67202  
LaDonna Lawrenz (316) 268-4239 (San. Sewer)  
Greg Lolley (316) 268-4334 (Water)
  - Sedgwick County RWD #1  
P.O. Box 490  
Kechi, ks. 67067  
Donna Burk (316) 744-3173

**PROJECT SURVEY CONTROL**

**Horizontal Project Datum**  
Latitude = 37° 43' 23"  
Project Coordinates x 0.999881766 =  
State Plane Coordinates (NAD1983)

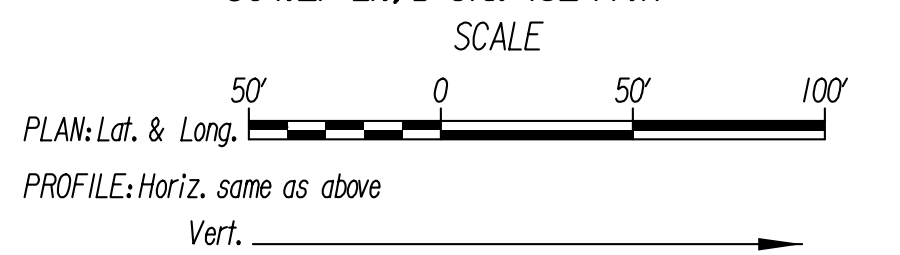
**Vertical Datum**  
National Geodetic Vertical Datum of 1929  
Datum Bench Mark - from Proj. 60X-04219-042 (BM#214) =  
Proj. 32X-09521-042 BM#1, Elevation = 1369.78  
T\* Post 5' W of SS MH, 300' N of K-96 and  
60' W of Greenwich Rd.  
304.27' Lt., @ Sta. 462+77.17

W 1/4 Cor. Sec. 3, T27S, R2E  
@ Greenwich Rd. Sta. 126+44.84  
Found 3/4" Iron Pipe in thimble in grass median  
1. Chiseled \*\*W side median on top curb 15.41' WNW  
2. Chiseled \*\*E side median on top curb 6.08' ENE  
3. Chiseled \*\*E face curb inlet 67.16' SW  
4. Chiseled \*\*W face curb inlet 67.85' SE

**LEGEND**

- Pavement Removal

- Denotes trees to be removed.



BM#7-Set Chis. \*\*W end N Hub Guard  
E. Bd. K-96 Bridge over Greenwich  
12.7' Rt. K-96 Sta. 462+55.6 Elev.=1395.59

BM#8-Set Chis. \*\*E end S Hub Guard  
E. Bd. K-96 Bridge over Greenwich  
12.7' Lt. K-96 Sta. 464+42.7 Elev.=1395.82

BM#9-Set Chis. \*\*Ctr. W side SWS Median Inlet  
2.6' Lt. K-96 Sta. 470+49.6 Elev.=1387.02

Plotted By: cp  
 Date: 12/30/2013  
 File: I:\2009\09521\Plan\09521-pl456.dgn

No.	Revision	By	Date
K-96 AND GREENWICH ROAD			
<b>K-96 MAINLINE</b>			
<b>STA. 456+00 TO STA. 472+00</b>			
GARY JANZEN, P.E.-CITY ENGINEER CITY OF WICHITA PROJECT NO. 472-85066			
<b>PEC</b> PROFESSIONAL ENGINEERING CONSULTANTS, P.A. 303 SOUTH TOPEKA WICHITA, KS 67202 316-262-2691 www.pec1.com			
Designed by	JPS	Job No.	09521
Drawn by	SVB	Date	Jan., 2014
			Sht. 10 of 388