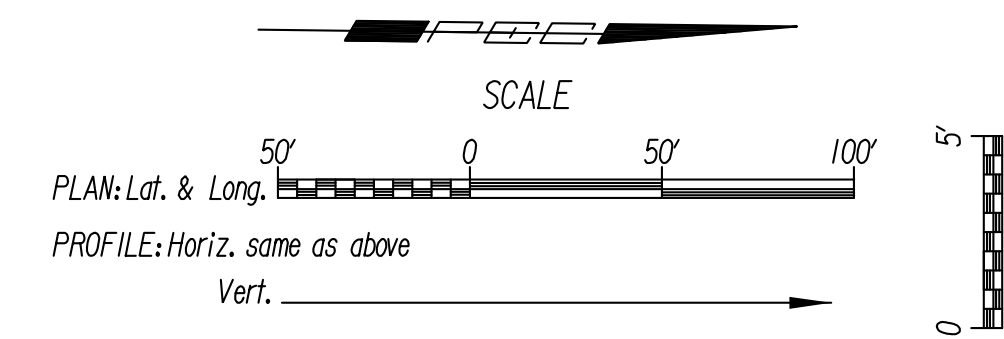
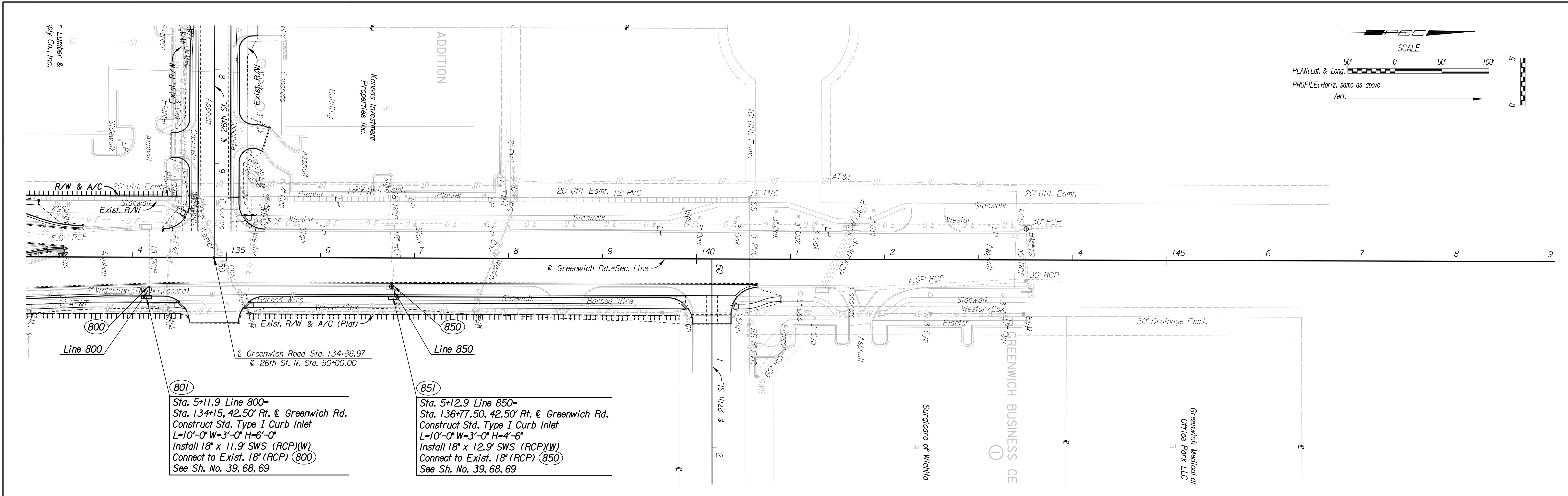
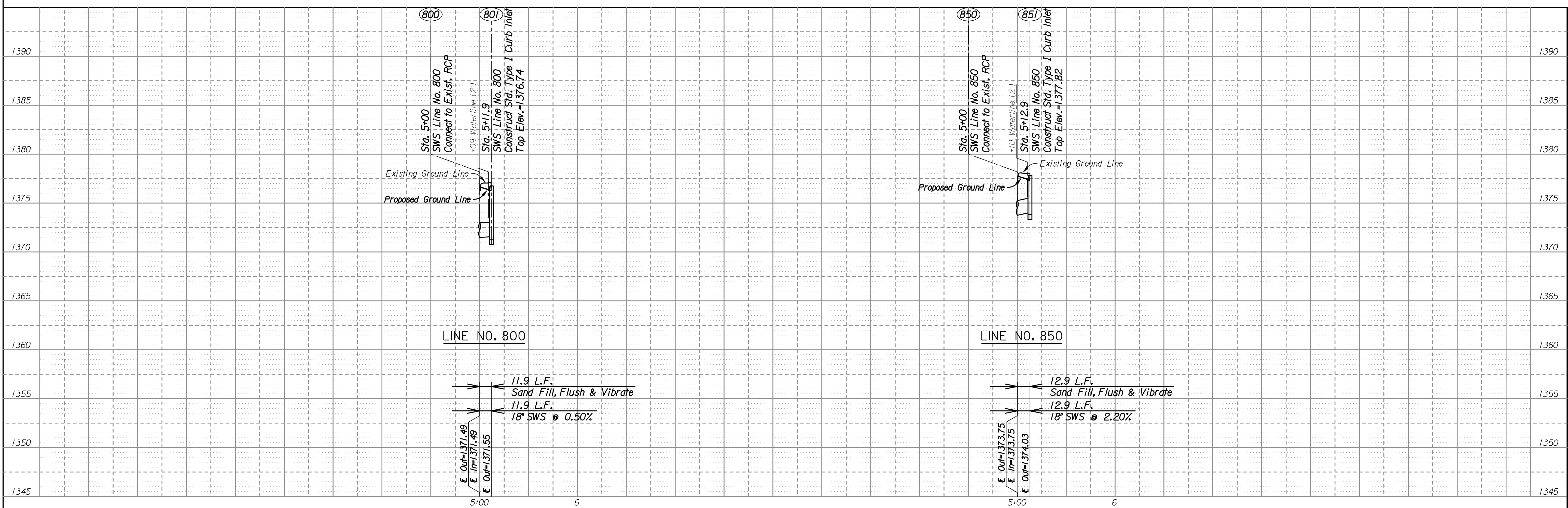


Plotted By: CD
 Date: 12/30/2013 11:34:26 AM
 FILE: I:\2009\0952\NSWS\0952\NSWS-DIPr-sr133.dgn



801
 Sta. 5+11.9 Line 800-
 Sta. 134+15, 42.50' Rt. \perp Greenwich Rd.
 Construct Std. Type I Curb Inlet
 L=10'-0" W=3'-0" H=6'-0"
 Install 18" x 11.9' SWS (RCP)(W)
 Connect to Exist. 18" (RCP) **800**
 See Sh. No. 39, 68, 69

851
 Sta. 5+12.9 Line 850-
 Sta. 136+77.50, 42.50' Rt. \perp Greenwich Rd.
 Construct Std. Type I Curb Inlet
 L=10'-0" W=3'-0" H=4'-6"
 Install 18" x 12.9' SWS (RCP)(W)
 Connect to Exist. 18" (RCP) **850**
 See Sh. No. 39, 68, 69



800
 Sta. 5+00
 SWS Line No. 800
 Connect to Exist. RCP
 +09 Waterline (2")
 Sta. 5+11.9
 SWS Line No. 800
 Construct Std. Type I Curb Inlet
 Top Elev. = 1376.74

850
 Sta. 5+00
 SWS Line No. 850
 Connect to Exist. RCP
 +10 Waterline (2")
 Sta. 5+12.9
 SWS Line No. 850
 Construct Std. Type I Curb Inlet
 Top Elev. = 1377.82

11.9 L.F.
 Sand Fill, Flush & Vibrate
 11.9 L.F.
 18" SWS @ 0.50%

12.9 L.F.
 Sand Fill, Flush & Vibrate
 12.9 L.F.
 18" SWS @ 2.20%

K-96 AND GREENWICH ROAD
STORM SEWER PLAN
 LINE NO. 800 & 850
 C.O.W. PROJ. NO. 472-85066

PEC
 PROFESSIONAL ENGINEERING CONSULTANTS, P.A.
 303 SOUTH TOPEKA WICHITA, KS 67202
 316-262-2891 www.pec1.com

Designed by: RJS
 Drawn by: DRP
 Job No. 09521
 Date: Jan., 2014