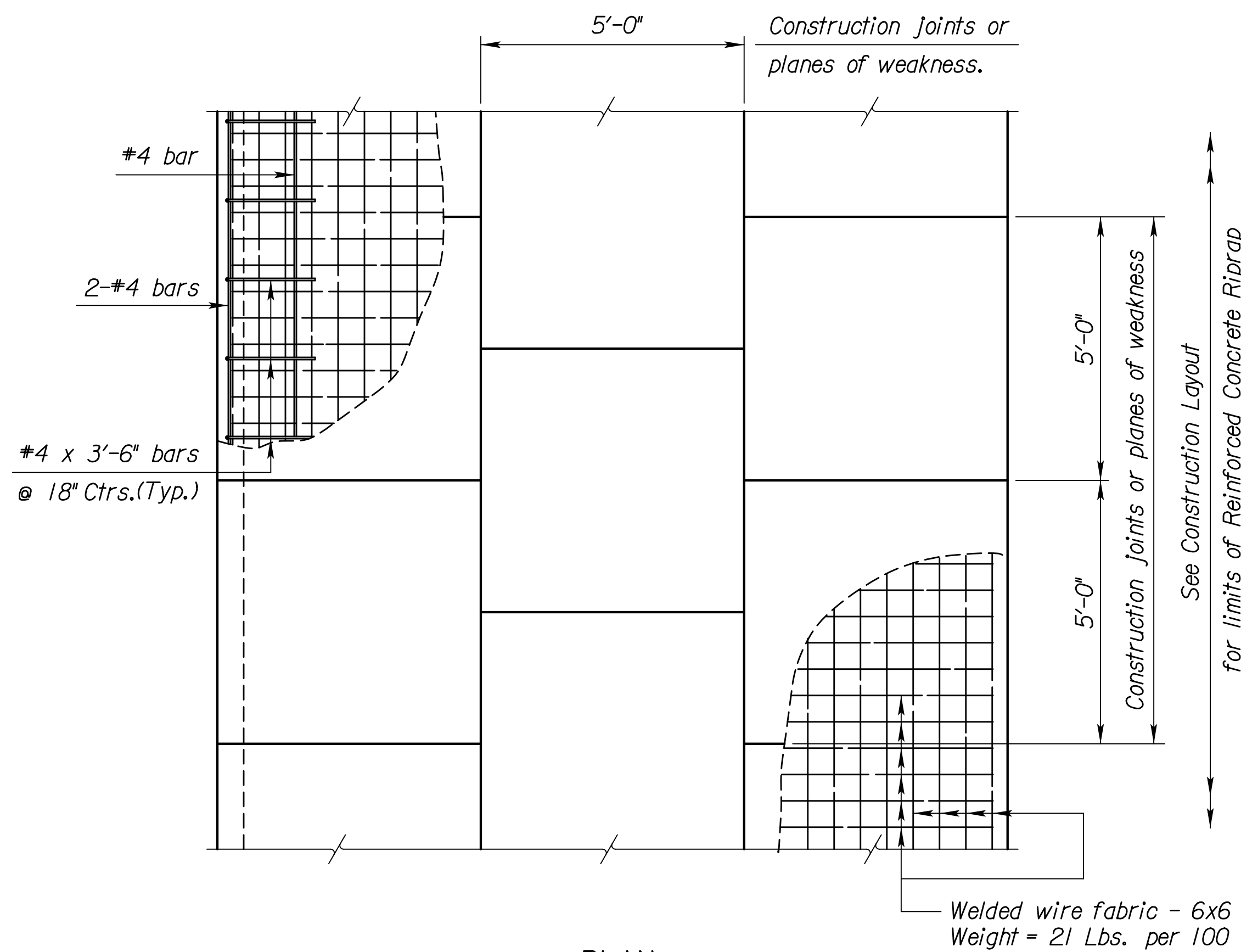


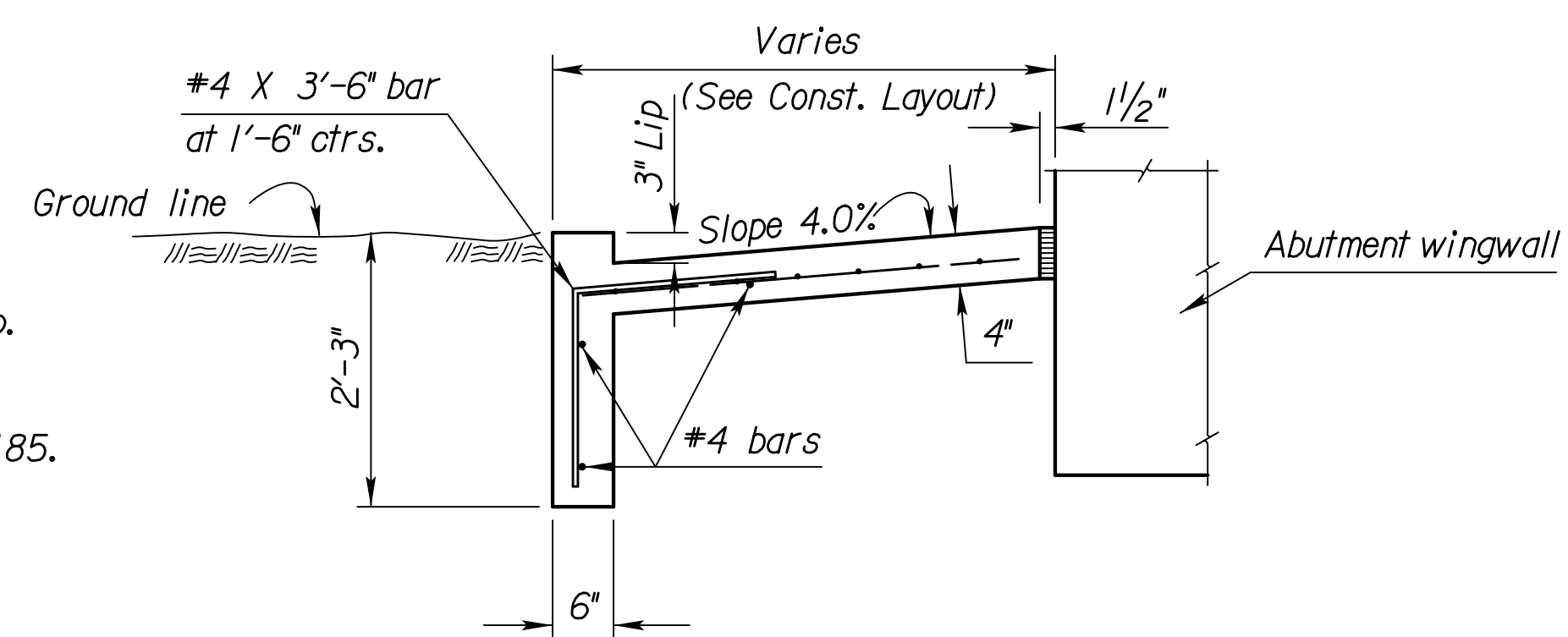
STATE	PROJECT NO.	YEAR	SHEET NO.	TOTAL SHEETS
KANSAS	472-85066	2014	123	388



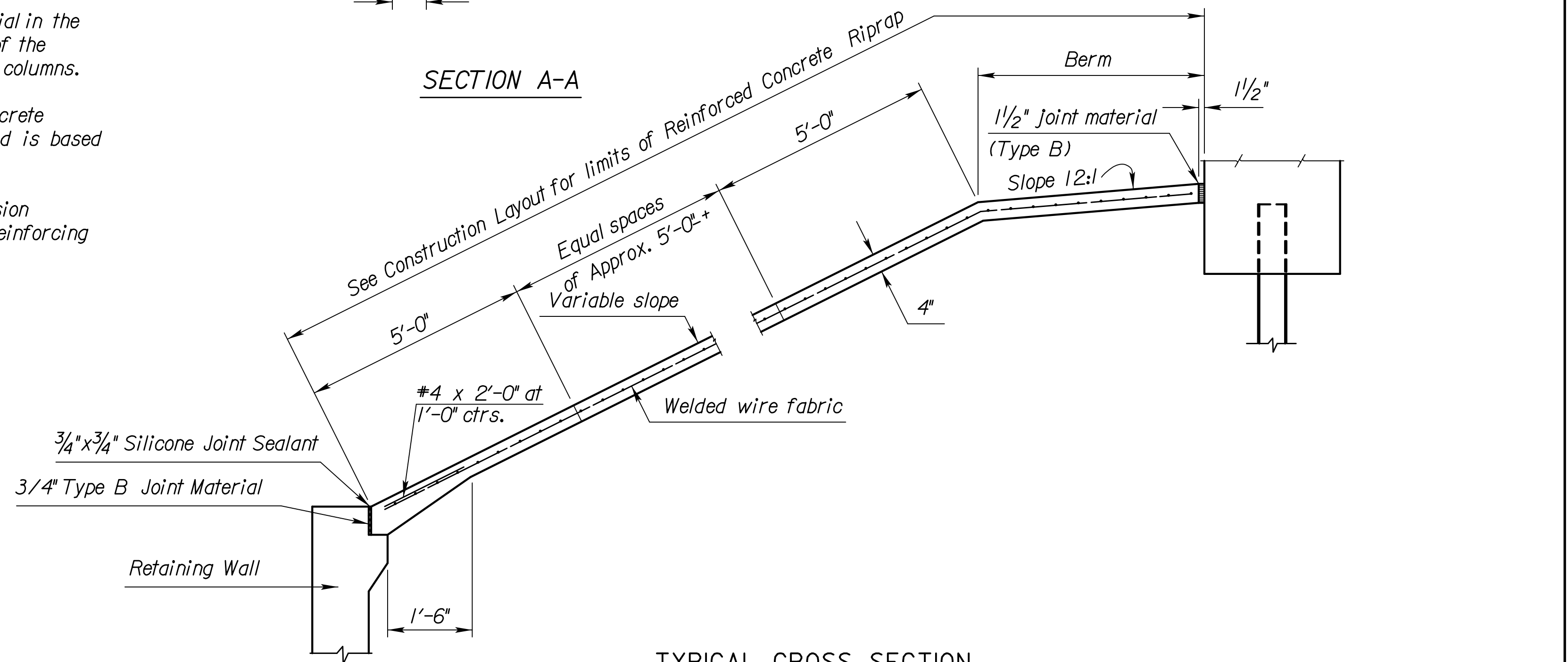
PLAN
(Showing Joint Layout)

Notes:

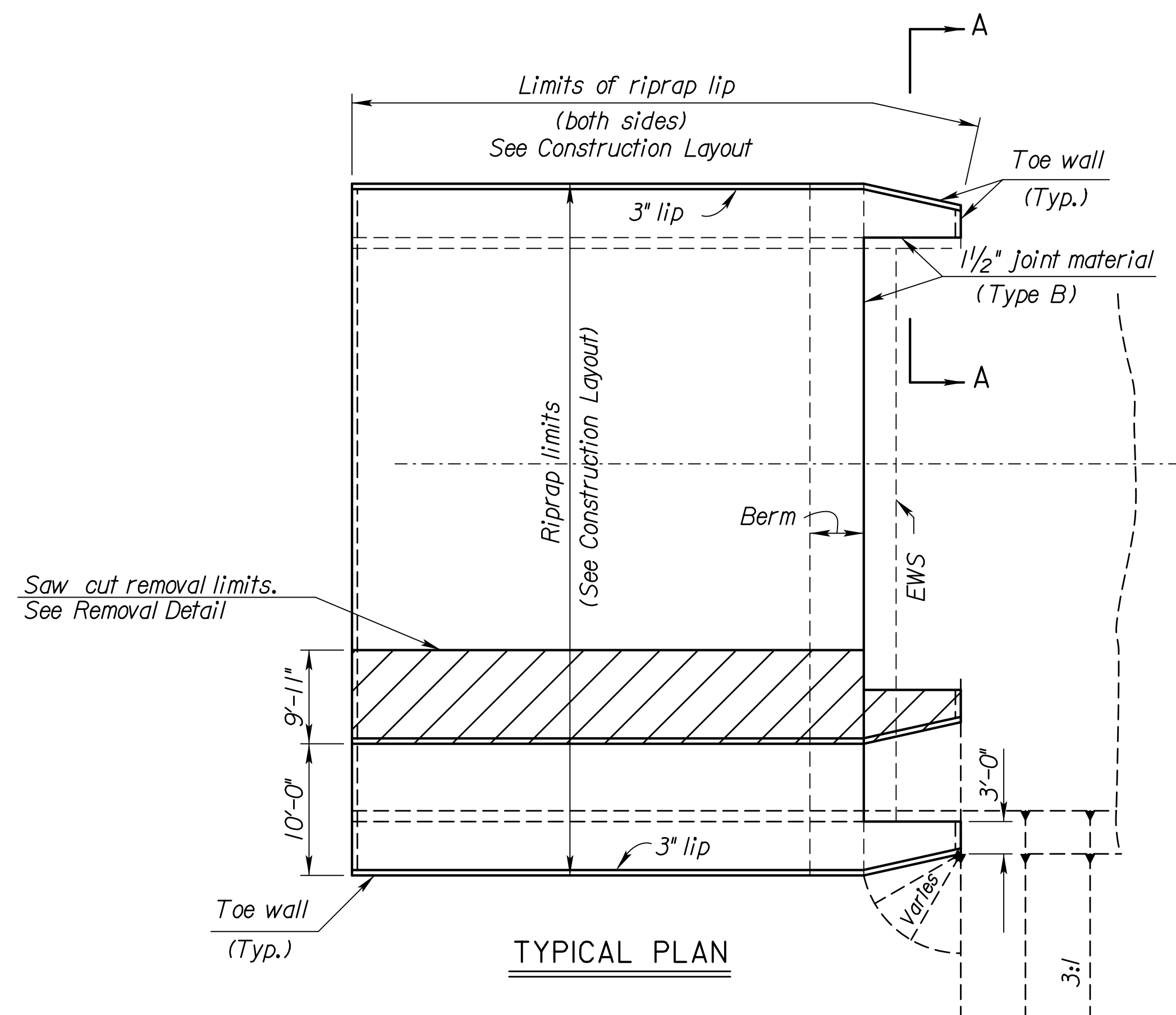
- Use Concrete (Grade 3.0)(AE) for the riprap.
- Use 6x6 - W1.4 x W1.4 welded wire fabric conforming to the requirements of ASTM A185.
- Use reinforcing steel conforming to the requirements of ASTM A615, Grade 60.
- Place 1/2" Type B expansion material in the joints caused by any intersection of the riprap with the abutment, wings, or columns.
- Measurement of the Reinforced Concrete Riprap shall be in square yards and is based on the outside surface area.
- The toe walls, 3" lip, Type B expansion material, welded wire fabric, and reinforcing steel are subsidiary to the bid item Reinforced Concrete Riprap.



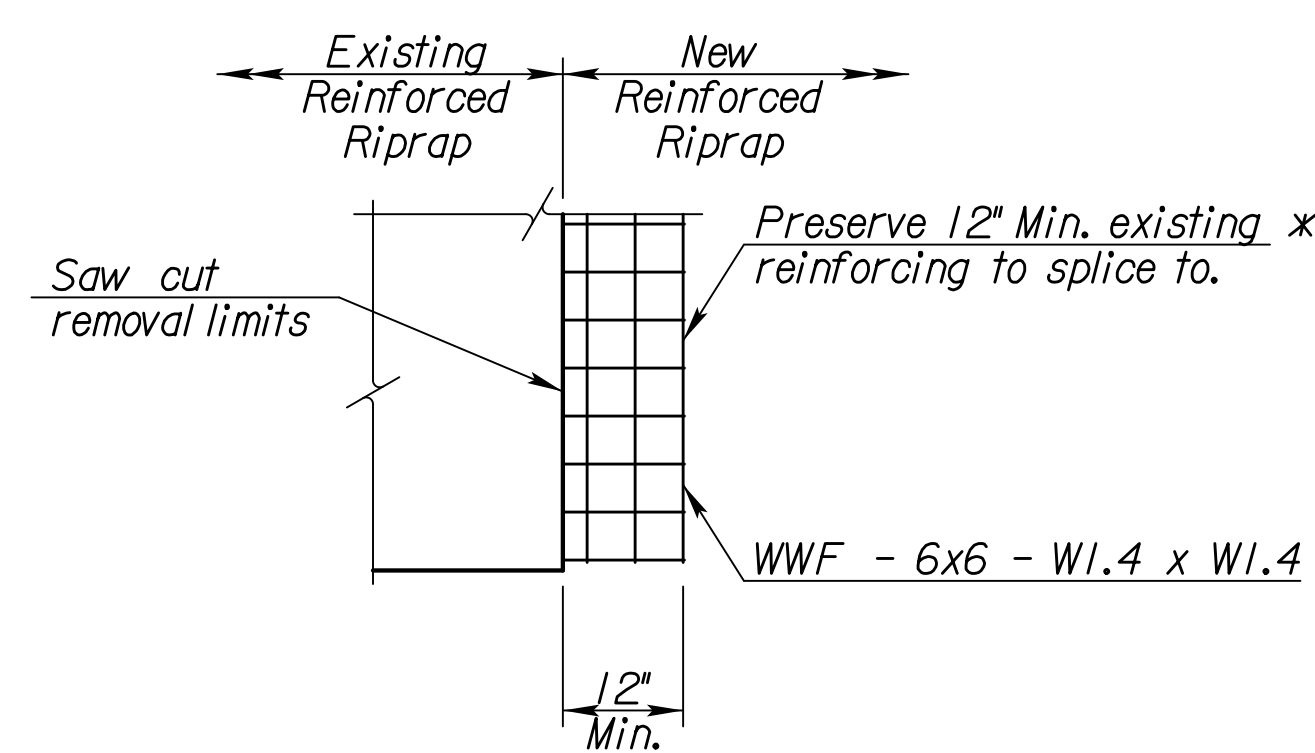
SECTION A-A



TYPICAL CROSS SECTION

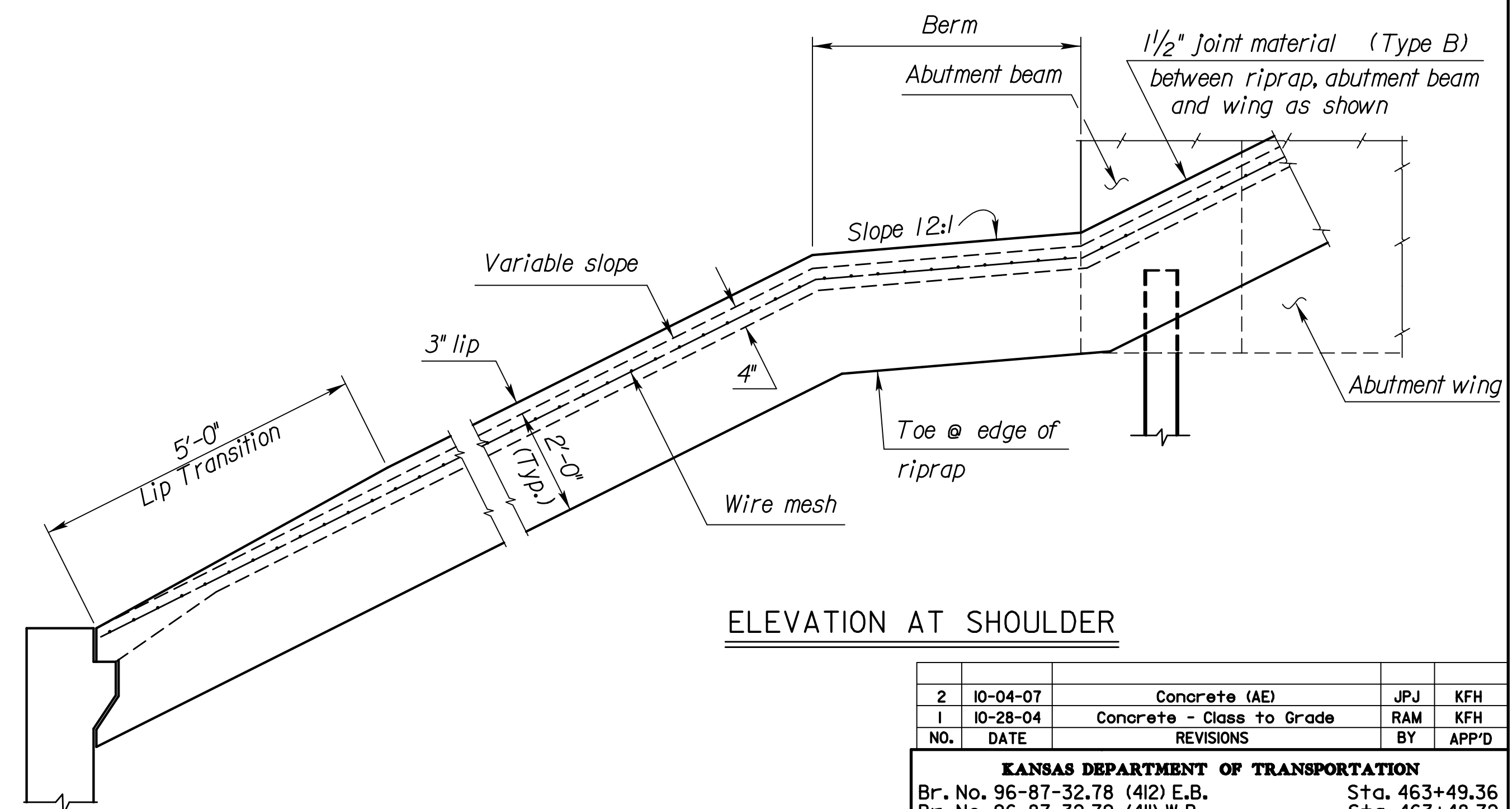


TYPICAL PLAN



REMOVAL DETAIL

* Contractor to splice to existing reinforcing, if damaged drill and grout #3 bars @ 12" o.c.



ELEVATION AT SHOULDER

2	10-04-07	Concrete (AE)	JPJ	KFH
1	10-28-04	Concrete - Class to Grade	RAM	KFH
NO.	DATE	REVISIONS	BY	APP'D

KANSAS DEPARTMENT OF TRANSPORTATION
 Br. No. 96-87-32.78 (4I2) E.B. Sta. 463+49.36
 Br. No. 96-87-32.79 (4I1) W.B. Sta. 463+48.72
REINFORCED CONCRETE RIPRAP (SPECIAL)
 K-96 OVER GREENWICH ROAD
 Proj. No. 472-85066 Sedgwick Co.

DESIGNED	8-24-88	APP'D	KENNETH F. HURST
TRACED			
DETAIL CK.	JVJI	QUAN. CK.	TRACE CK.

Std. Base File: br130.dgn
 Plotted By: msn
 File: A:\2009\09521\Office Check 03-2012\Bridges\Standards\09521-BR-br130.dgn
 Plot Date: 12/30/2013

Removal Limits