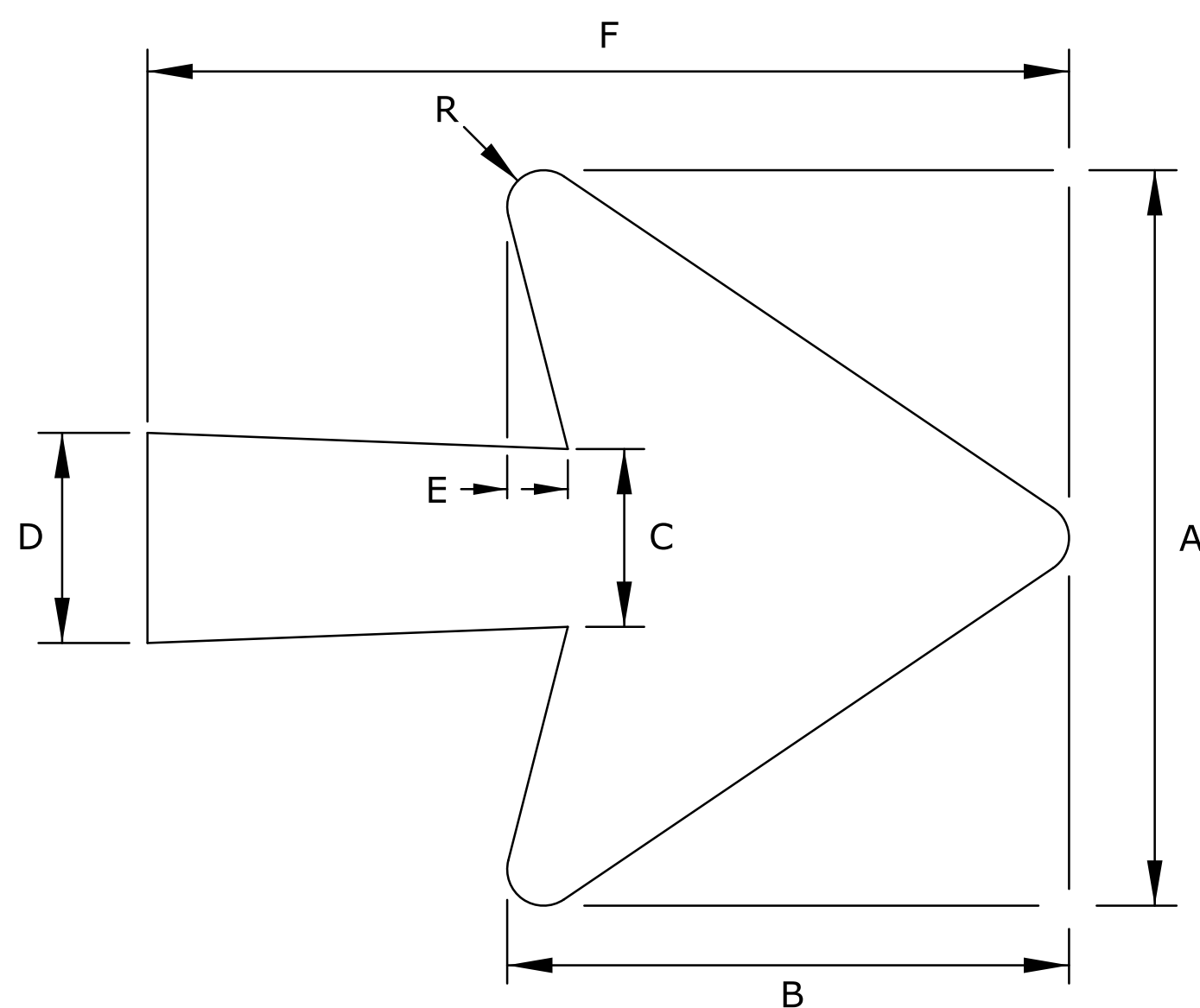


ARROW DIMENSIONS (INCHES)

	A	B	C	D	E	F	R
10.67" U.C.	15 $\frac{1}{8}$	11 $\frac{1}{16}$	3 $\frac{3}{4}$	5	1 $\frac{15}{16}$	24 $\frac{1}{4}$	1 $\frac{13}{16}$
13.33" U.C.	18 $\frac{1}{4}$	14	4 $\frac{1}{2}$	6	1 $\frac{1}{2}$	29 $\frac{1}{4}$	$\frac{3}{4}$
16" U.C.	22 $\frac{1}{4}$	17	5 $\frac{3}{8}$	7 $\frac{1}{8}$	1 $\frac{3}{4}$	35 $\frac{5}{8}$	1

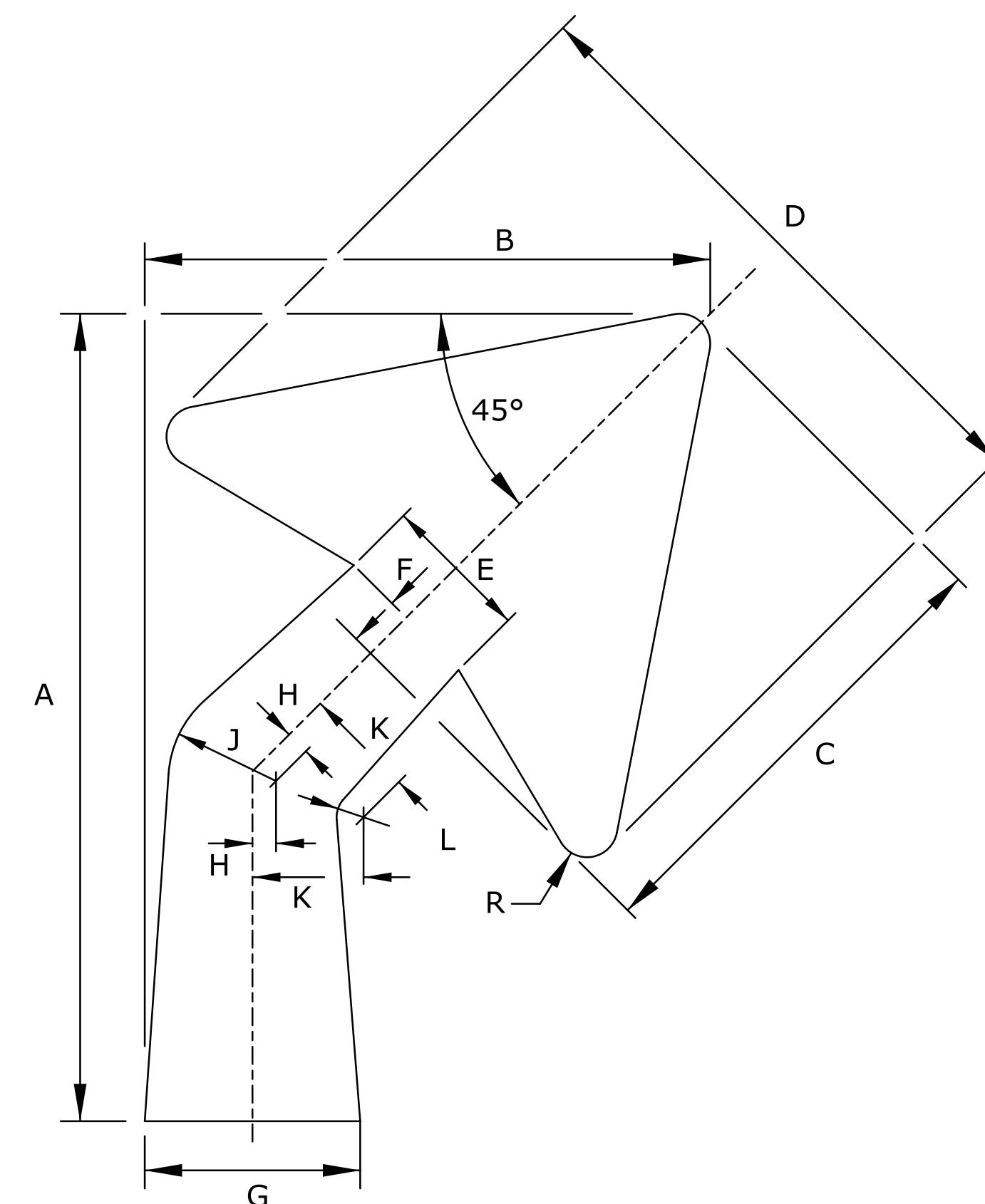
TYPE "A" ARROW



ARROW DIMENSIONS (INCHES)

	A	B	C	D	E	F	R
10.67" U.C.	11 $\frac{3}{8}$	8 $\frac{11}{16}$	2 $\frac{3}{4}$	3 $\frac{1}{4}$	1 $\frac{15}{16}$	14 $\frac{1}{4}$	$\frac{9}{16}$

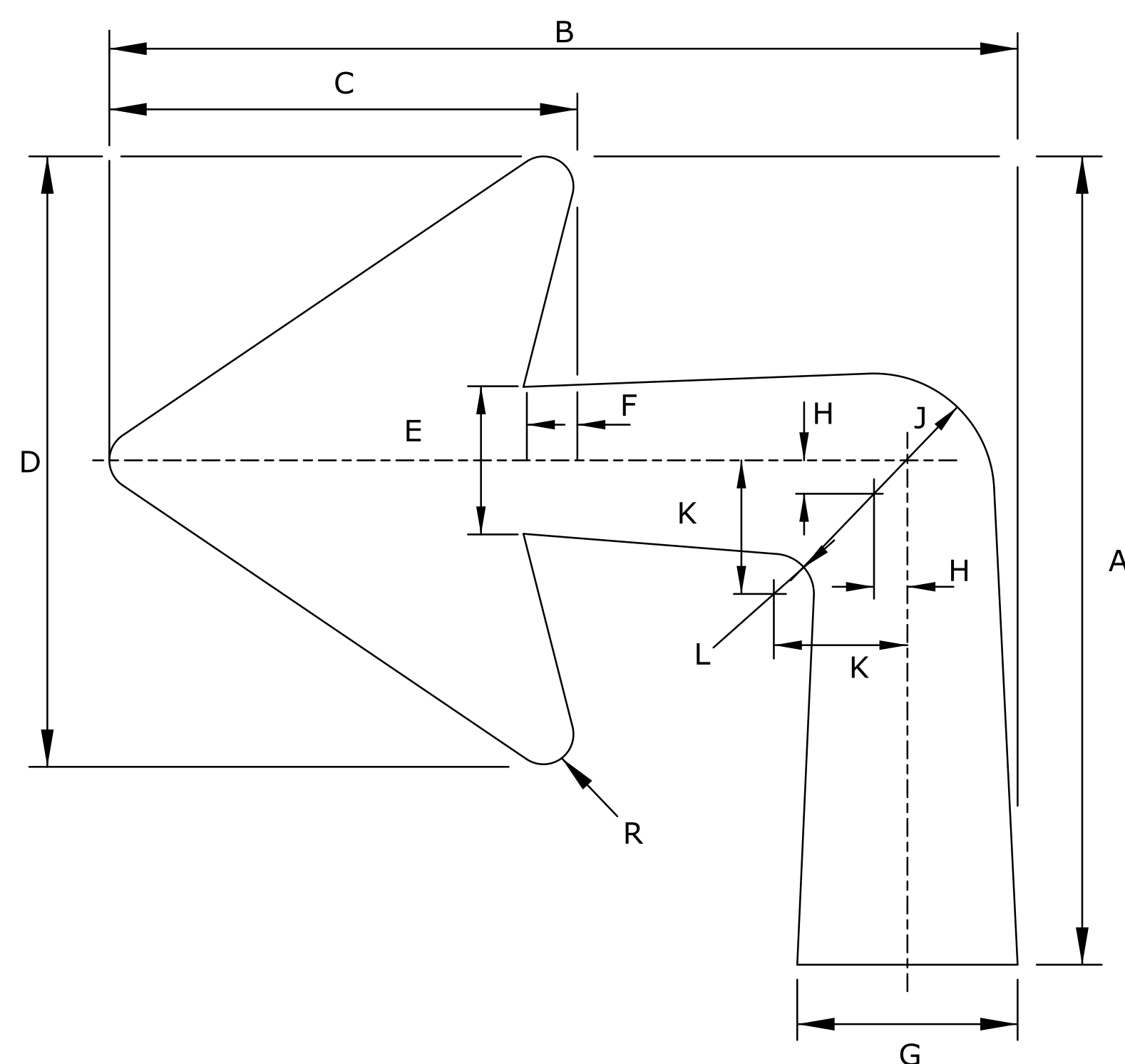
TYPE "B" ARROW



ARROW DIMENSIONS (INCHES)

	A	B	C	D	E	F	G	H	J	K	L	R
10.67" U.C.	15 $\frac{1}{8}$	10 $\frac{3}{4}$	8 $\frac{11}{16}$	11 $\frac{3}{8}$	2 $\frac{3}{4}$	1 $\frac{15}{16}$	4	$\frac{7}{16}$	2	2 $\frac{1}{16}$	$\frac{1}{2}$	$\frac{9}{16}$
13.33" U.C.	18 $\frac{1}{4}$	13	10 $\frac{7}{8}$	14 $\frac{1}{4}$	3 $\frac{1}{2}$	1 $\frac{3}{16}$	4 $\frac{1}{2}$	$\frac{9}{16}$	2 $\frac{1}{2}$	2 $\frac{9}{16}$	$\frac{5}{8}$	1 $\frac{11}{16}$
16" U.C.	22 $\frac{1}{4}$	15 $\frac{5}{8}$	13	17	4 $\frac{1}{8}$	1 $\frac{1}{16}$	5 $\frac{1}{4}$	$\frac{5}{8}$	3	3 $\frac{1}{8}$	$\frac{3}{4}$	$\frac{7}{8}$

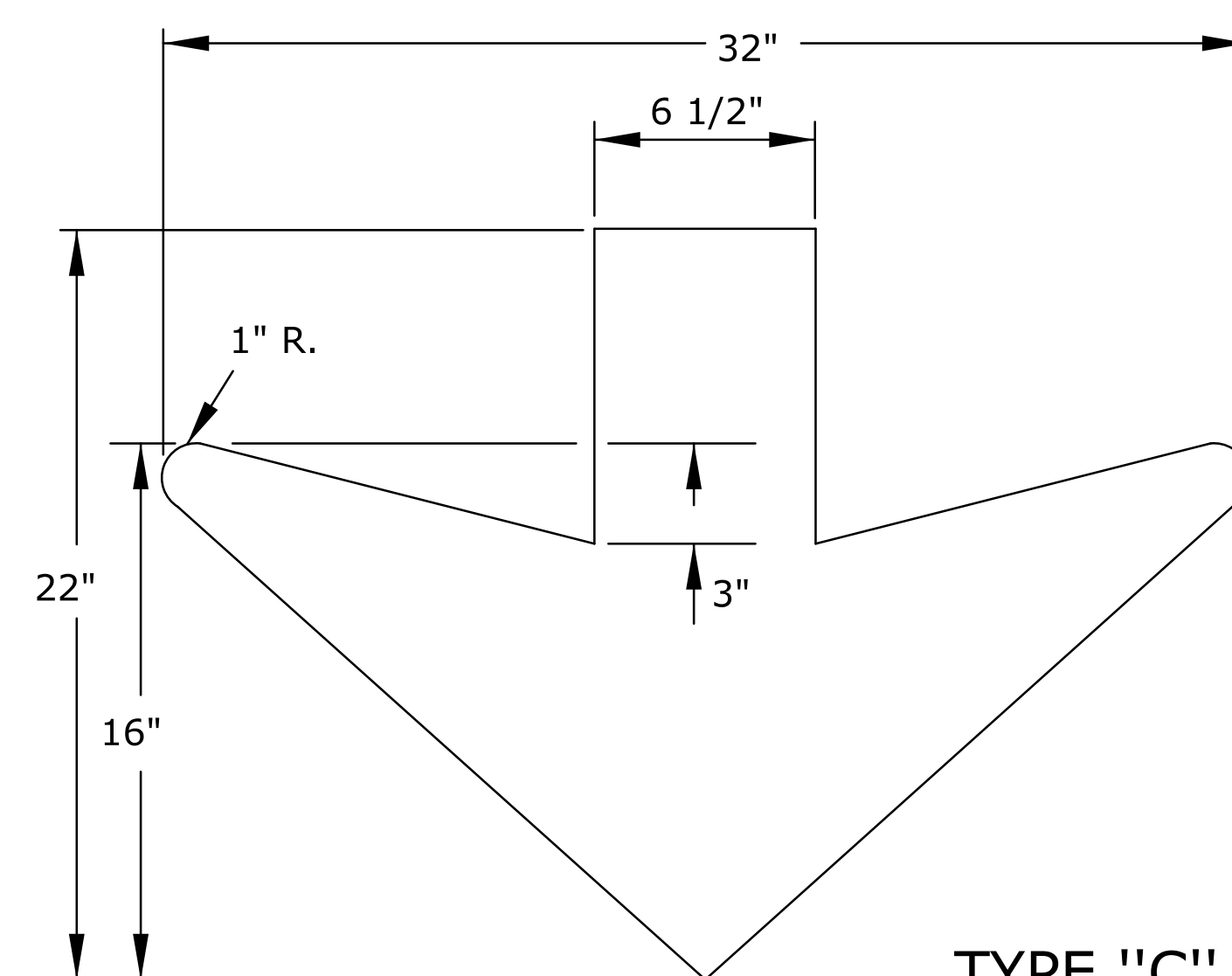
ADVANCE TURN (45°)



ARROW DIMENSIONS (INCHES)

	A	B	C	D	E	F	G	H	J	K	L	R
10.67" U.C.	15 $\frac{1}{8}$	17	8 $\frac{11}{16}$	11 $\frac{3}{8}$	2 $\frac{3}{4}$	1 $\frac{15}{16}$	4 $\frac{1}{8}$	$\frac{5}{8}$	2 $\frac{1}{4}$	2 $\frac{1}{2}$	$\frac{3}{4}$	$\frac{9}{16}$
13.33" U.C.	18 $\frac{1}{4}$	20 $\frac{1}{2}$	10 $\frac{7}{8}$	14 $\frac{1}{4}$	3 $\frac{1}{2}$	1 $\frac{3}{16}$	5 $\frac{1}{8}$	$\frac{5}{8}$	2 $\frac{3}{4}$	2 $\frac{7}{8}$	1	1 $\frac{11}{16}$
16" U.C.	22 $\frac{1}{4}$	25	13	17	4 $\frac{1}{8}$	1 $\frac{1}{16}$	6 $\frac{1}{8}$	$\frac{3}{4}$	3 $\frac{1}{4}$	3 $\frac{7}{8}$	1 $\frac{1}{4}$	$\frac{7}{8}$

ADVANCE TURN (90°)



TYPE "C"

NOTE:
 USE TYPE 'A' ARROWS ON INTERSTATE AND EXPRESSWAY WITH INTERCHANGES. USE TYPE 'B' ARROWS ON THE MAINLINE OF EXPRESSWAYS WITH AT-GRADE INTERSECTIONS. SEE STANDARD PLAN SHEET TE590 FOR DETAILED SPECIFICATIONS.

ALL DIMENSIONS ARE IN INCHES.

NO.	DATE	REVISIONS	BY	APP'D

KANSAS DEPARTMENT OF TRANSPORTATION
 GUIDE SIGN
 LEGEND DETAILS
 ARROWS

TE560 7/1/03

FHWA APPROVAL	7/22/2003	APP'D	Steven A. Buckley
DESIGNED	D.D.G.	DETAILED	W.S.B.
DESIGN CK.	S.A.B.	DETAIL CK.	D.D.G.
		QUANTITIES	TRACED
		QUAN. CK.	TRACE CK.