

WATER DISTRIBUTION SYSTEM

to serve

LIBERTY PARK 3RD ADDITION - PHASE 2B

CITY OF WICHITA, KANSAS

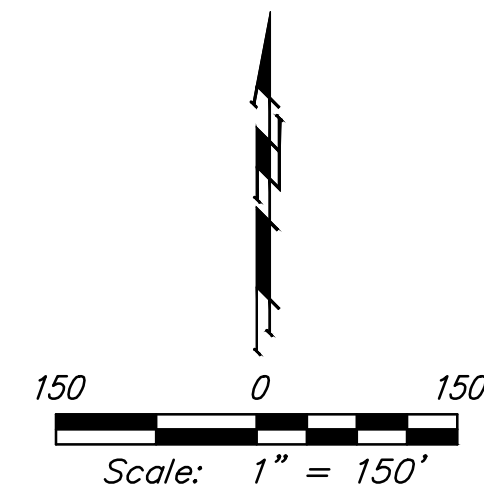
Gary Janzen, P.E. City Engineer

Project Number

448-89987

O.C.A. Number

735502



Sheet Index

Title Sheet	1
Standard Water Details	2-3
Line 1	4
Erosion Control Plan	5
Erosion Control Details	6-9
Coordinate Sheet	10
Copy of Plat	11

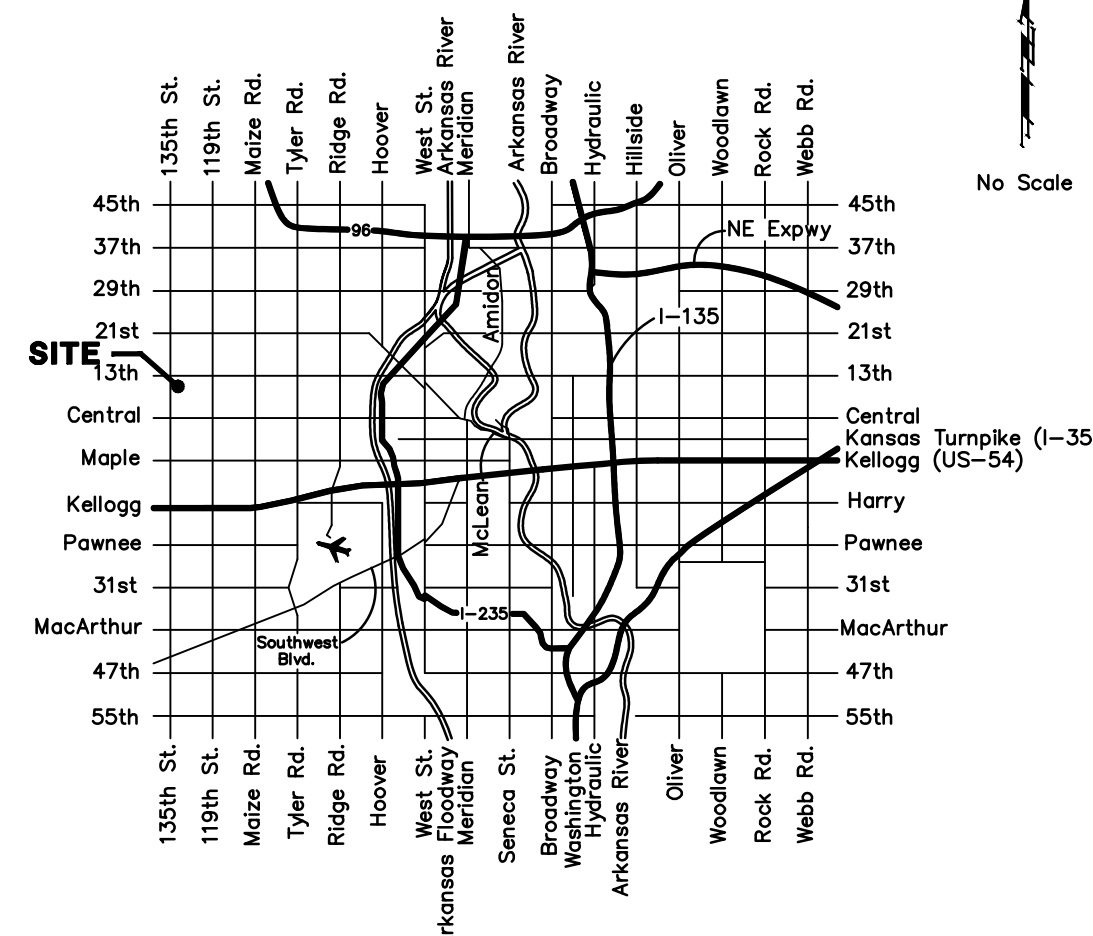
Benchmarks

"□" Cut in top of curb south end of east curb return 10th St. & Forestview adjacent to Lot 9, Block A, Liberty Park 3rd Addition
Elev. = 1355.83 (City Datum)

"□" Cut in top of curb 10' east of end of existing pavement adjacent to Lot 32, Block C, Liberty Park 3rd Addition
Elev. = 1351.61 (City Datum)

C.O.W. Benchmark Disk. 56' E and 55' N of 135th St. W. & 13th St. N.
Elev. = 167.83 (City Datum)

C.O.W. Benchmark Disk. 1/2 mile south of 13th St. 39' east of 135th St. 18' south of hedge row.
Elev. = 159.71 (City Datum)



Vicinity Map

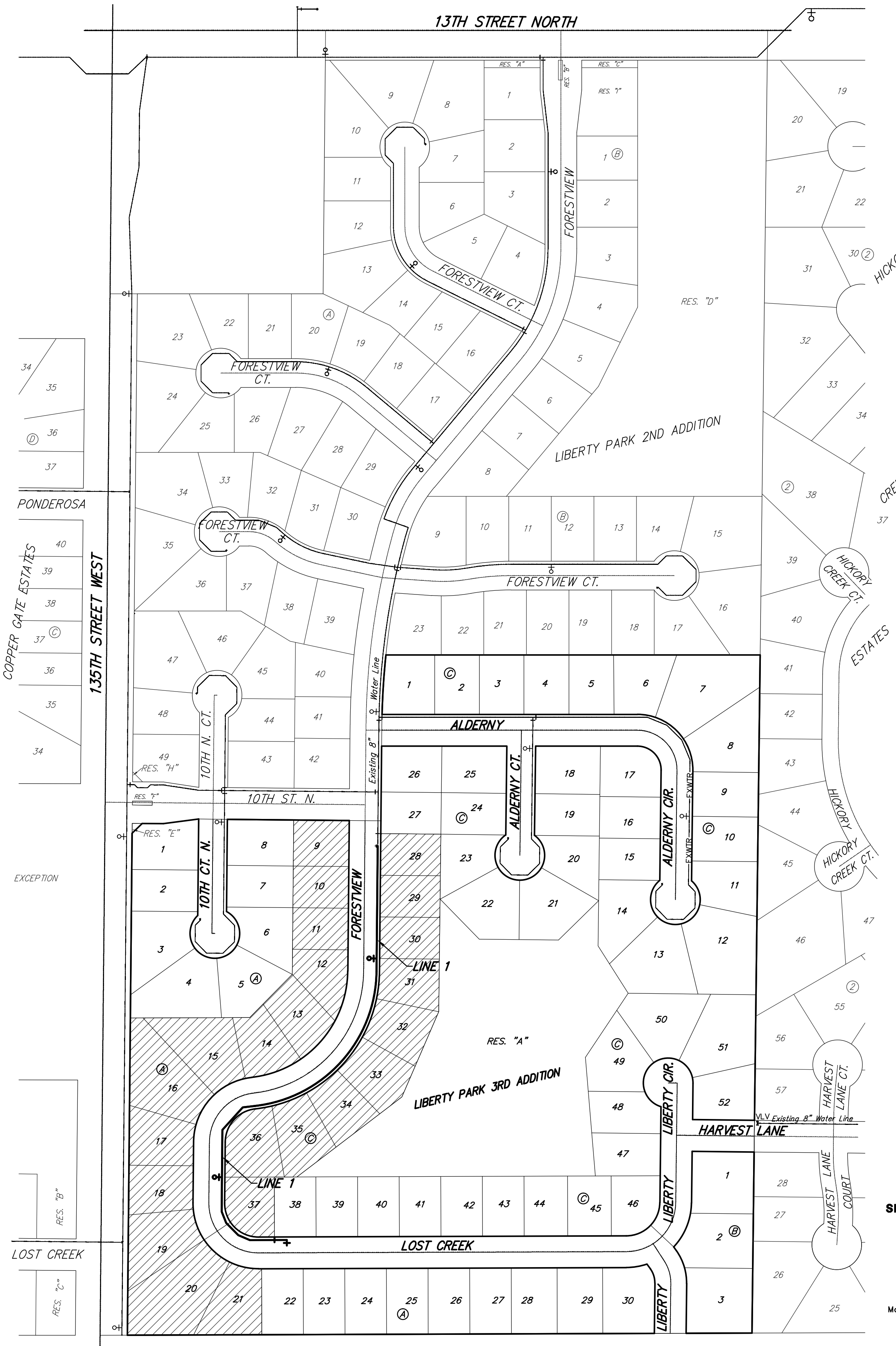
GENERAL NOTES:

- Contractor will be required to provide notice to utility companies a minimum of forty-eight (48) hours prior to any excavation, as follows:

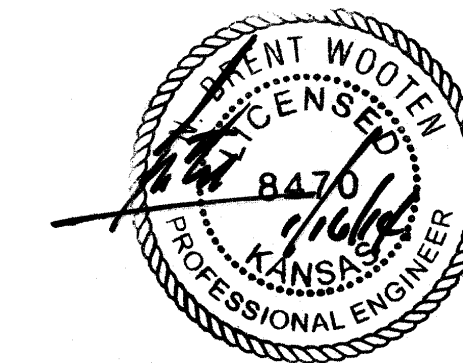
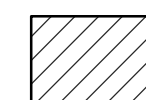
Kansas One-Call 687-2470

The Contractor must notify the following in case of an emergency:

Cox Communications 262-4270
Kansas Gas Service 1-888-482-4950
Westar Energy 383-6650
Aquila Energy 1-800-303-0357
ATT 268-2245
City of Wichita Water Dept. 268-4563
City of Wichita Sewer Maint. 268-4024
City of Wichita Storm Sewer Maint. 268-4090
City of Wichita Traffic Maint. 268-4034
Conoco Phillips Pipeline Co. 1-877-267-2290
Southern Star Pipeline Co. 529-6600
Kinder-Morgan Pipeline Co. 1-888-844-5658
- The Contractor shall be responsible for preserving property irons. The Contractor will be required to re-establish any property irons which are damaged or destroyed by his construction operations. Such irons shall be re-established by a licensed land surveyor in accordance with state laws.
- All existing and proposed erosion control measures including silt fencing, erosion control mat, straw bales, inlet barriers, and const. entrance shall be maintained throughout construction by the contractor and until project is accepted by the City of Wichita. The on-site engineer shall complete weekly reports on the status of erosion control measures. The contractor shall be required to comply with maintenance and/or replacement of erosion control measures as determined by the on-site engineer until project is accepted by City of Wichita.
- The Contractor shall adjust water valve boxes and fire hydrants as directed by the Engineer at the price bid for said adjustments. The Water Department shall field locate water valves one time during construction when required by Contractor. It shall be the Contractor's responsibility to preserve such field locations during the construction process. Water valves, water valve boxes or fire hydrants damaged during construction shall be repaired by the Contractor at his own expense.
- All areas disturbed during construction shall be seeded at 300 lbs./acre with Rye Grass immediately following construction in that area. Contractor shall prepare ground per City of Wichita Specifications. All costs associated with seeding shall be included in bid item "Project Seeding".
- All water mains and appurtenances shall be installed in accordance with City of Wichita, Kansas Standard Specifications for Water Main Installations No. 14533.
- Excess excavation shall remain on site and be spread evenly on lots outside of easements and R/W's.
- Opening and closing of water valves shall be done slowly to prevent damage to the water distributions system from water hammer. All valves closed by the contractor must be reopened as new construction permits. Project inspector must ascertain that any valve closed by the Contractor is reopened. Contractor will be permitted to operate water valves only when the project inspector assigned to the project is present.
- The Developer for this project is Paul E. Kelsey and may be reached at (316) 722-1077.



Benefit District



Baughman Company, P.A. 315 Ellis St. Wichita, KS 67211 P 316-262-7271 F 316-262-0144
ENGINEERING | SURVEYING | PLANNING | LANDSCAPE ARCHITECTURE