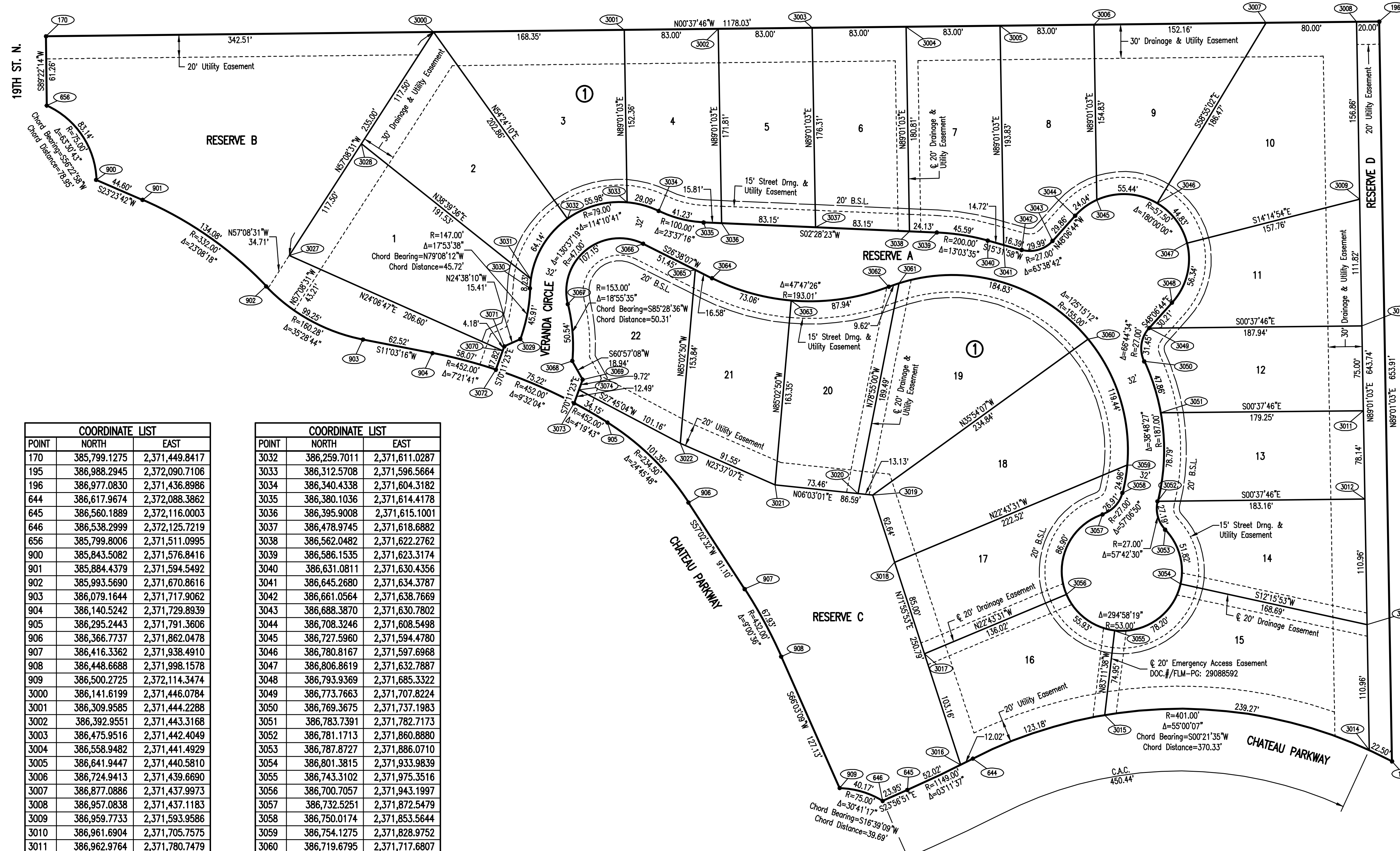


GLEN MEADOWS 2ND ADDITION TO WICHITA, SEDGWICK COUNTY, KANSAS



SCALE: 1" = 50'
 • = 1/2" REBAR W/PEC CAP UNLESS OTHERWISE NOTED

COORDINATE LIST		
POINT	NORTH	EAST
170	385,799.1275	2,371,449.8417
195	386,988.2945	2,372,090.7106
196	386,977.0830	2,371,436.8986
644	386,617.9674	2,372,088.3862
645	386,560.1889	2,372,116.0003
646	386,538.2999	2,372,125.7219
656	385,799.8006	2,371,511.0995
900	385,843.5082	2,371,576.8416
901	385,884.4379	2,371,594.5492
902	385,993.5690	2,371,670.8616
903	386,079.1644	2,371,717.9062
904	386,140.5242	2,371,729.8939
905	386,295.2443	2,371,791.3606
906	386,366.7737	2,371,862.0478
907	386,416.3362	2,371,938.4910
908	386,448.6688	2,371,998.1578
909	386,500.2725	2,372,114.3474
3000	386,141.6199	2,371,446.0784
3001	386,309.9585	2,371,444.2288
3002	386,392.9551	2,371,443.3168
3003	386,475.9516	2,371,442.4049
3004	386,558.9482	2,371,441.4929
3005	386,641.9447	2,371,440.5810
3006	386,724.9413	2,371,439.6690
3007	386,877.0886	2,371,437.9973
3008	386,957.0838	2,371,437.1183
3009	386,959.7733	2,371,593.9586
3010	386,961.6904	2,371,705.7575
3011	386,962.9764	2,371,780.7479
3012	386,964.3161	2,371,858.8756
3013	386,966.2185	2,371,969.8181
3014	386,968.1209	2,372,080.7606
3015	386,734.4274	2,372,049.7772
3016	386,607.2399	2,372,093.8149
3017	386,575.2455	2,371,995.7460
3018	386,548.8823	2,371,914.9377
3019	386,529.4551	2,371,855.3897
3020	386,516.4025	2,371,854.0062
3021	386,443.3480	2,371,846.2630
3022	386,359.4685	2,371,809.5846
3027	386,014.1185	2,371,643.4826
3028	386,077.8692	2,371,544.7805
3029	386,218.1128	2,371,717.5279
3030	386,226.7301	2,371,672.6241
3031	386,227.4323	2,371,664.4318

COORDINATE LIST		
POINT	NORTH	EAST
3032	386,259.7011	2,371,611.0287
3033	386,312.5708	2,371,596.5664
3034	386,340.4338	2,371,604.3182
3035	386,380.1036	2,371,614.4178
3036	386,395.9008	2,371,615.1001
3037	386,478.9745	2,371,618.6882
3038	386,562.0482	2,371,622.2762
3039	386,586.1535	2,371,623.3174
3040	386,631.0811	2,371,630.4356
3041	386,645.2680	2,371,634.3787
3042	386,661.0564	2,371,638.7669
3043	386,688.3870	2,371,630.7802
3044	386,708.3246	2,371,608.5498
3045	386,727.5960	2,371,594.4780
3046	386,780.8167	2,371,597.6968
3047	386,806.8619	2,371,632.7887
3048	386,793.9369	2,371,685.3322
3049	386,773.7663	2,371,707.8224
3050	386,769.3675	2,371,737.1983
3051	386,783.7391	2,371,782.7173
3052	386,781.1713	2,371,860.8880
3053	386,787.8727	2,371,886.0710
3054	386,801.3815	2,371,933.9839
3055	386,743.3102	2,371,975.3516
3056	386,700.7057	2,371,943.1997
3057	386,732.5251	2,371,872.5479
3058	386,750.0174	2,371,853.5644
3059	386,754.1275	2,371,828.9752
3060	386,719.6795	2,371,717.6807
3061	386,552.8289	2,371,668.0519
3062	386,543.7598	2,371,671.2411
3063	386,457.4508	2,371,683.5234
3064	386,387.5730	2,371,663.7552
3065	386,372.7502	2,371,656.3210
3066	386,326.7566	2,371,633.2537
3067	386,260.0793	2,371,686.6254
3068	386,264.0470	2,371,736.7792
3069	386,273.2408	2,371,753.3327
3070	386,202.6895	2,371,727.8863
3071	386,204.1071	2,371,723.9509
3072	386,196.6490	2,371,744.6548
3073	386,265.7125	2,371,774.2314
3074	386,269.9450	2,371,762.4818

(170) = COORDINATE POINT NO.

SEE SHEET NO. 4 FOR WATERLINE COORDINATES.

Served 01-28-2014 2:16:30 PM by CSI
 Plot Scale 1" = 50' - 29-2014 10:58:23 AM by CSI
 G:\2013\13438\001\13438-001-C03-PLAT

No.	Revision	By	Date
GLEN MEADOWS 2ND ADDITION WATERLINE IMPROVEMENTS			
PLAT (GLEN MEADOWS 2ND ADDITION)			
GARY JANZEN, P.E. - CITY ENGINEER CITY OF WICHITA PROJECT NO. 448-90450			
PROFESSIONAL ENGINEERING CONSULTANTS, P.A. 303 SOUTH TOPEKA WICHITA, KS 67202 316-262-2891 www.pec1.com			
Designed by	CSB, SAD	Job No.	35-13438-001
Drawn by	CSL, JAN	Date	SEPTEMBER 2013
			Sht. 3 of 12